

How to find the IP address of my computer?

Author: Longcent

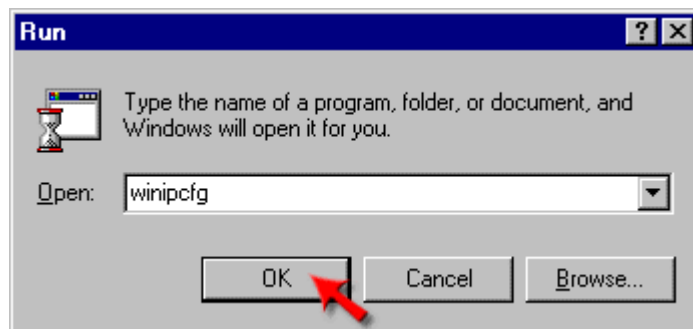
This FAQ is applied to the below operation systems:

- Windows 98 / Windows Me
- Windows 2000/XP

Windows 98, and Windows ME

Step. 1 Click on **Start**, then click on **Run**.

Step. 2 The Run Dialogue Box will appear. Type **winipcfg** in the window as shows in the below figure and then click **OK**.



Step. 3 The **IP Configuration** window will appear, displaying your **Ethernet Adapter Information**.

- Select your adapter from the drop down menu.
- If you do not see your adapter in the drop down menu, your adapter is not properly installed.



Step. 4 After selecting your adapter, it will display your IP address, subnet mask, and default gateway.

Step. 5 Click **OK** to close the IP Configuration window.

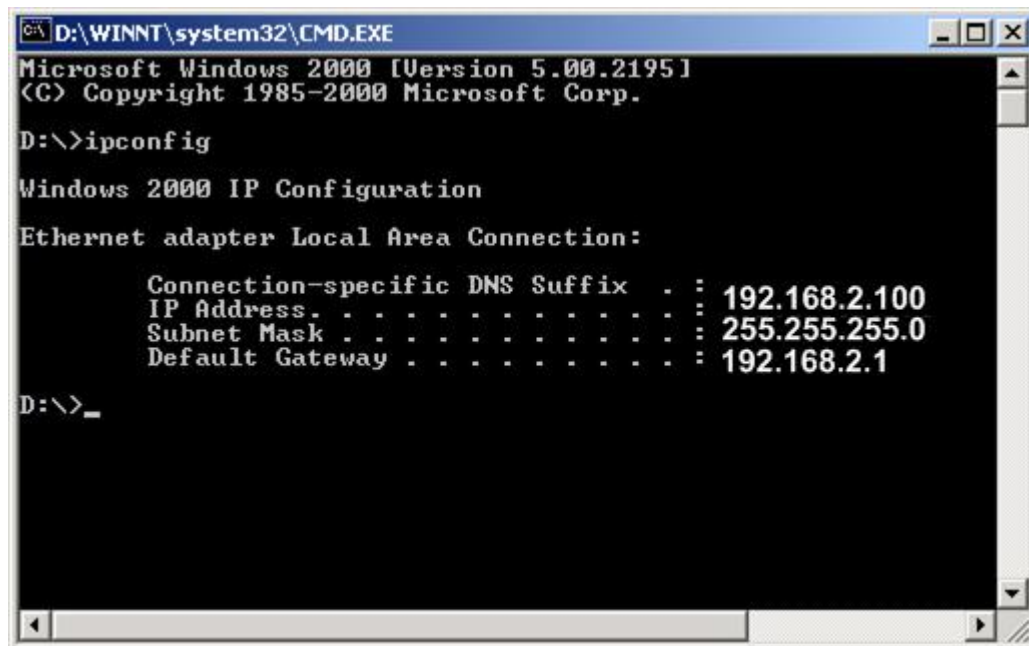
Windows 2000 and Windows XP

Step. 1 Click on **Start** and select **Run**.

Step. 2 Type **cmd** then click **OK**.



Step. 3 From the Command Prompt, enter **ipconfig**. It will return your IP address, subnet mask, and default gateway.

A screenshot of a Windows Command Prompt window. The title bar reads 'D:\WINNT\system32\CMD.EXE'. The window content shows the following text:

```
Microsoft Windows 2000 [Version 5.00.2195]
(C) Copyright 1985-2000 Microsoft Corp.

D:\>ipconfig

Windows 2000 IP Configuration

Ethernet adapter Local Area Connection:

    Connection-specific DNS Suffix  . : 
    IP Address. . . . .               : 192.168.2.100
    Subnet Mask . . . . .             : 255.255.255.0
    Default Gateway . . . . .         : 192.168.2.1

D:\>_
```

Step. 4 Type **exit** to close the command prompt.