



Access Points

Network Management Suites

AP Controllers

PoE Web Smart Switches

PoE Unmanaged Switches

Web Smart Switches

Unmanaged Switches

PoE Splitters/Injectors

SFP/Mini GBIC

Media Converters

KVM Switches



Edimax Technology Co., Ltd.
No.3, Wu-Chuan 3rd Road, Wu-Gu,
New Taipei City 24891, Taiwan
Email: support@edimax.com.tw
Tel: +886-2-77396888

Edimax Technology Europe B.V.
Fijenhof 2, 5652 AE Eindhoven,
The Netherlands
Email: support@edimax.nl
Tel: +31-40 250 1200

Edimax Computer Company
3350 Scott Blvd., Bldg.15 Santa Clara, CA 95054, USA
Live Tech Support: 1(800) 652-6776
Email: support@edimax.com
Tel : +1-408-4961105



2015

Business Networking Solution Guide

Access Points | Network Management Suites | AP Controllers |
PoE Web Smart Switches | PoE Unmanaged Switches |
Web Smart Switches | Unmanaged Switches |
PoE Splitters/Injectors | SFP/Mini GBIC | Media Converters | KVM Switches

2015 Q1



www.edimax.com

Background

Since Edimax’s establishment in 1986, we have grown to become one of the world's leading manufacturers of advanced network communication products. We are dedicated to the design, development, manufacture, and marketing of a broad range of networking solutions. Our success is based on a positive corporate image and the continuous expansion of our partner channel networks. The company’s core values include quality service, professional R&D, and innovation. Edimax is headquartered in Taiwan (Republic of China) and has been listed on the Taiwan Stock Exchange since 2001 . In 2003, Edimax received ISO 9001 and ISO 14000 certification.

Worldwide Offices

Edimax's global presence spans across North America, Asia, Africa and Europe. The company has branch offices in California, the Netherlands, the United Kingdom, Poland, Romania, France, Germany, Australia, India, Ukraine, UAE, Russia, Italy, Spain, China, Singapore, and Hong Kong. Edimax currently serves over 70 countries via our worldwide distribution channels. Thanks to our international distribution centers and offices, we are able to offer timely logistics, services, and support to customers around the globe. Edimax maintains a customer-oriented approach, and thus spares no effort in fulfilling their local and global networking needs.

Research & Development

Edimax's Taiwan- and China-based R&D team consists of over 200 members. Our solid and professional engineering team has contributed greatly to our success by developing new products to meet the market's ever-changing demands. We are constantly increasing investment in our R&D centers, to strengthen our ability to develop world-class products and solutions. Edimax products are all CE, FCC, and C-Tick emission certified. Our wireless 802.11n and 802.11ac range is Wi-Fi certified, and our drivers are tested by Microsoft and NSTL to ensure interoperability. Edimax has also formed strategic partnerships with several chipset vendors, and is an active member of both the Wi-Fi Alliance and the Gigabit Ethernet Alliance.

Networking People Together

Our mission is simple and clear: “Networking People Together.” With over 29 years of experience in the networking industry, we are able to deliver the best solutions to our global partners and customers. We are committed to bringing the latest network-ing technologies to the customer at the most affordable prices. Not only do we manufacture products for the SOHO and SME markets, but also enable our channel partners to provide complete networking solutions for large businesses. Our long-term business strategies and innovations have allowed our company to consolidate its status as a renowned value-adding and customer-oriented manufacturer in the networking industry.

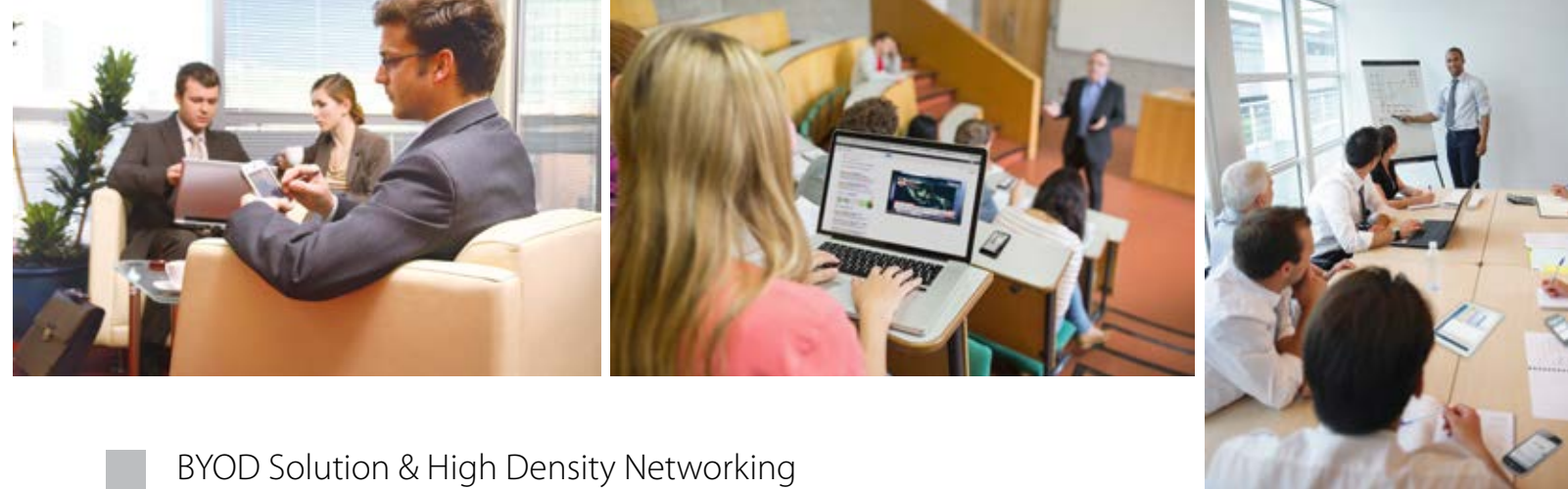
Product Range

Edimax's wide and comprehensive product lines can satisfy the connectivity needs of any networking architecture or applica-tion. Our products are distinguished by their value, performance, and excellent support. The complete range of our products includes wireless solutions, print servers, xDSL routers, Ethernet switches, PoE solutions, powerline solutions, network access controllers, load balancer solutions, network cameras, professional surveillance cameras, KVM switches, media converters, and other customer-oriented networking applications.

02	Edimax Pro
04	Edimax Pro Solutions
08	Access Points
08	Indoor Access Points
14	Outdoor Access Points
16	AP Comparision Table
18	Network Management Suite
19	AP Controllers
20	Edimax Pro AP Family
21	Switches
22	PoE Web Smart Switches
32	PoE Unmanaged Switches
39	Web Smart Switches
41	Unmanaged Switches
44	Swiches Comparison Table
50	Accessories
50	PoE Splitters/Injectors & SFP/Mini GBICs
51	Media Converters
52	KVM Switches
53	Edimax Worldwide Offices



The Edimax Pro series is a range of high performance, reliable and affordable Wi-Fi solutions for modern businesses. Performance, functionality and usability designed for day-to-day enterprise environments – with leading 11ac technology, powerful security, flexible deployment and management options for company MIS departments. Suited for SMB environments including offices, hotels, meeting rooms, schools, campuses, hospitals, retail stores, cafes and others where performance and security are critical for your business.



High Performance Design with High-Speed 1750Mbps Dual-Band 11ac

State-of-the-art IEEE 802.11ac wireless technology delivers the Giga-fast Wi-Fi speeds that today's fast-moving modern business environments demand. And simultaneous 2.4GHz & 5GHz dual-band coverage means maximum flexibility for mobile-centric business productivity applications. Speeds up to 450Mbps on the 2.4GHz band and 1300Mbps on the 5GHz band can handle even the most bandwidth intensive tasks, perfect for audio, video and voice applications and significantly faster than traditional 802.11n Wi-Fi. Additionally Edimax Pro series products feature other high-performance design features such as solid capacitors for significantly longer lifespans than traditional non-solid alternatives, generating less heat and delivering increased stability. Durable, robust and ready for business environments.



Seamless Mobility

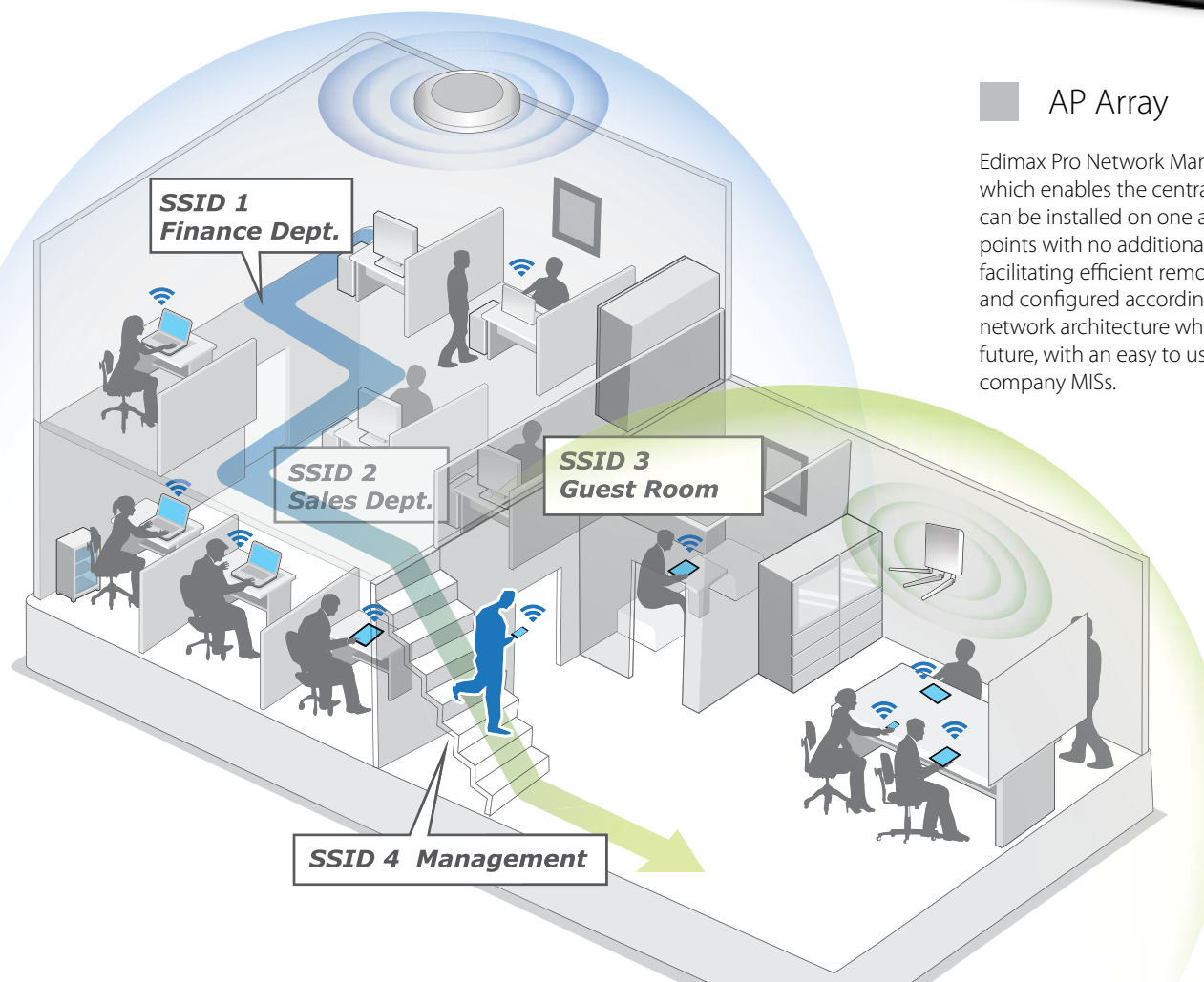
Typical wireless access points can effectively cover a 25m – 30m radius under normal usage. Now with the technological advances in Edimax Pro access points, we can extend effective coverage approximately 1.5x further, eliminating Wi-Fi dead zones completely and providing blanket coverage across enterprise environments. Wireless devices can stay seamlessly connected in environments where connectivity may be a critical component of efficiency and productivity, and benefit from mobility with high-speed connectivity across a range of wireless devices: smartphones, tablets and computers, throughout an entire organization.

Wide Coverage & Multiple SSIDs

With adjustable RF output power and high receiver sensitivity, Edimax Pro access points are equipped to provide wide coverage where it's needed the most. Suitable for large spaces across office floors, shop floors, hospital wards, or conference rooms, get the wireless coverage that staff and systems need to operate efficiently. Keep every corner of your business connected and differentiate user groups, departments or guests with up to 32 separate SSIDs with independent security. Wide, accessible Wi-Fi coverage with strong security to protect sensitive company information and supervise access to internal networks.

Fast Roaming

Edimax Pro access points support fast roaming, meaning wireless devices can roam smoothly between multiple access points without the need to re-login. This minimizes network overheads and ensures best performance for wireless clients, whose wireless applications such as video streaming will not be interrupted or delayed. Keeping devices connected is essential and delays or connectivity issues can be costly for businesses – fast roaming ensures a smooth wireless experience throughout an entire organization, across rooms, offices, departments and even different floors.



BYOD Solution & High Density Networking

Bring Your Own Device (BYOD) is becoming an increasingly commonplace company trend in offices and enterprise environments worldwide. Employees are using their own smartphones, tablets and laptops with the latest cloud-connected productivity apps to get things done and, traditional 2.4GHz is crowded, so most of these devices need or support high-speed 5GHz Wi-Fi. And in offices, hotels, schools or other densely populated environments, access points need to cope with a high volume of users connecting to the network at any time, whether it's customers or employees. Edimax Pro solutions support the latest 802.11ac 2.4GHz & 5GHz dual-band Wi-Fi along with high-density capacity to support up to a hundred users simultaneously, ideal for BYOD workplaces and a large number of wireless devices.

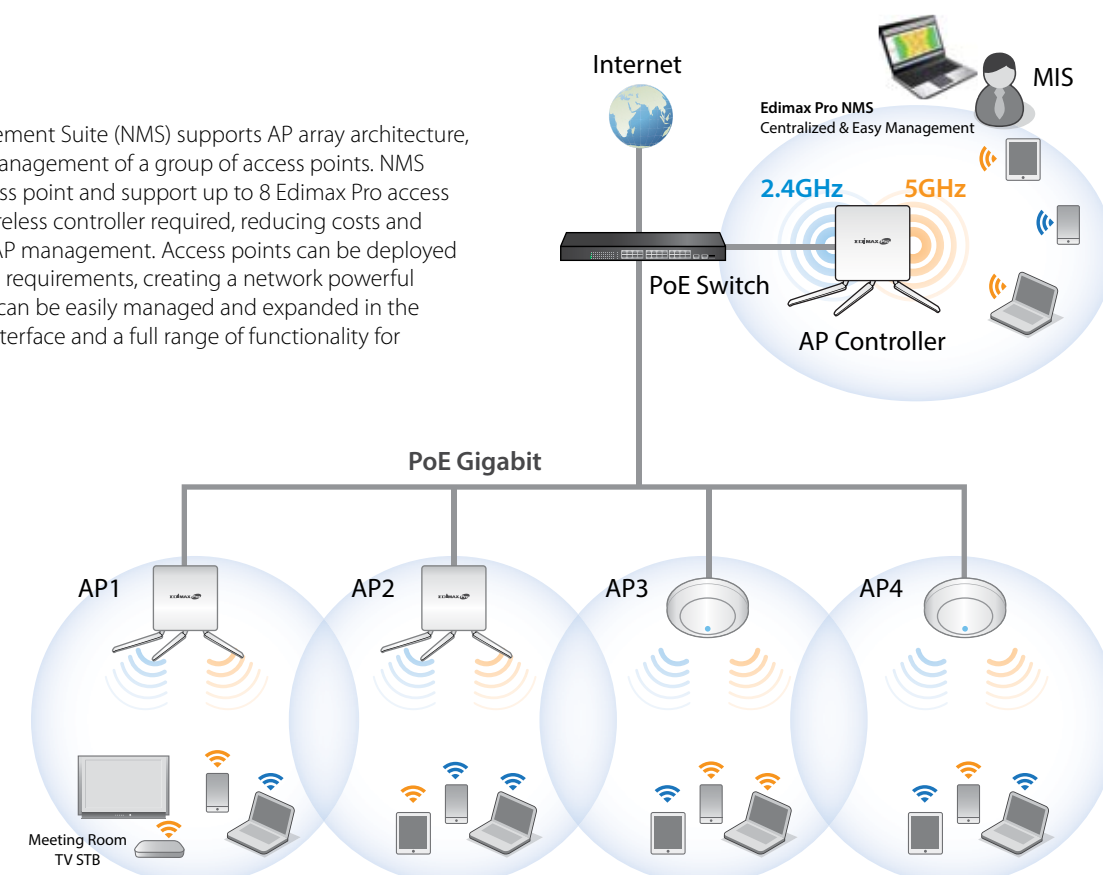


Easy and Intuitive Network Management Suite

Edimax Pro NMS (Network Management Suite) is a web-based wireless network management system. Company MIS departments can plan and manage Edimax Pro access points' powerful functionality according to their office space using an easy, remote web-based interface which includes a dashboard, map view, traffic statistics and wireless client list for network-wide remote administration. RADIUS settings, WLAN group settings, access control, guest network settings and firmware upgrades can all be managed centrally from a single location to reduce network downtime, aid troubleshooting and optimize network performance. Zone plans and setup wizards are also available for expanding and managing large networks with multiple access points.

AP Array

Edimax Pro Network Management Suite (NMS) supports AP array architecture, which enables the central management of a group of access points. NMS can be installed on one access point and support up to 8 Edimax Pro access points with no additional wireless controller required, reducing costs and facilitating efficient remote AP management. Access points can be deployed and configured according to requirements, creating a network powerful network architecture which can be easily managed and expanded in the future, with an easy to use interface and a full range of functionality for company MISs.



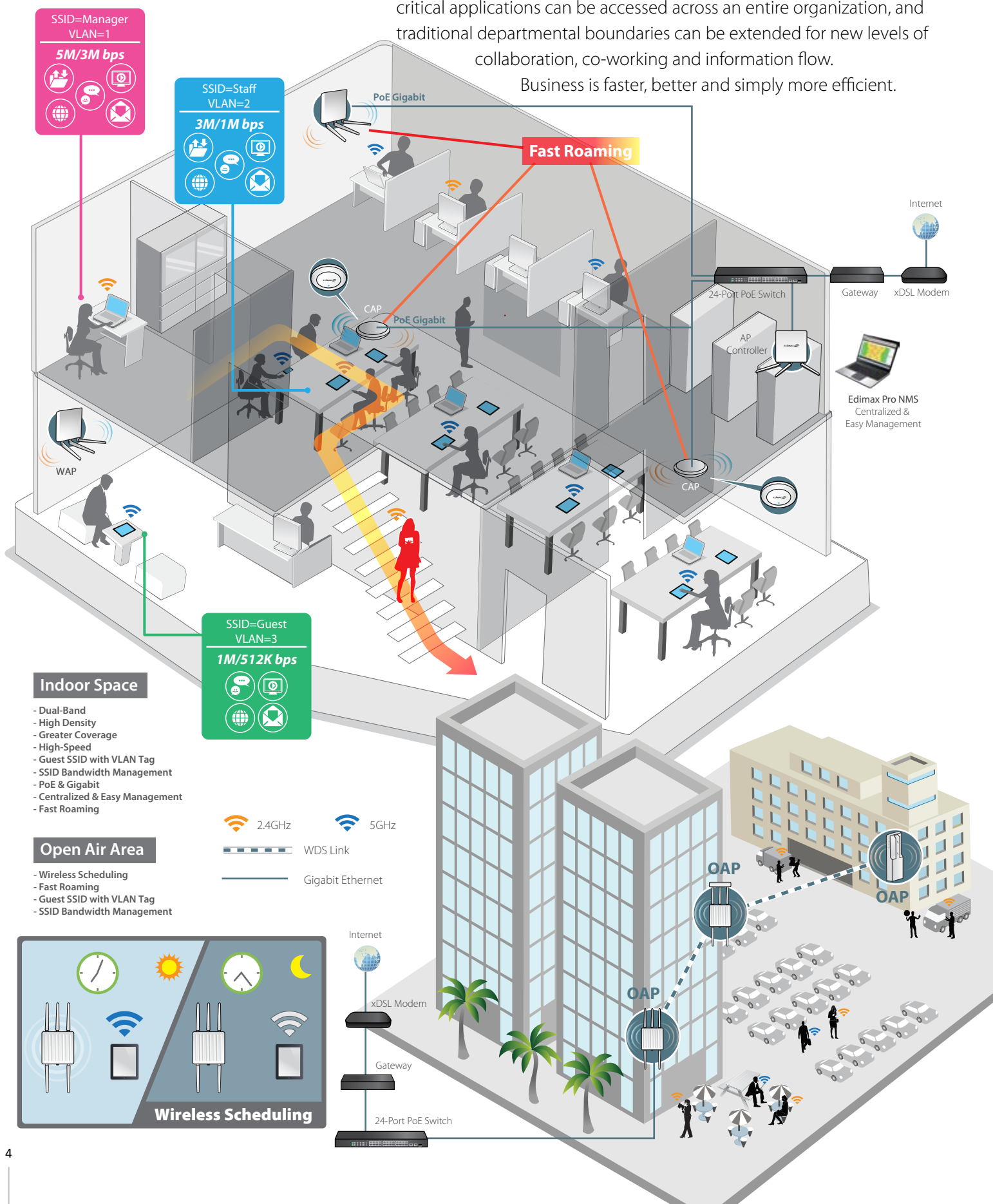
Enterprise

Solution

(Small-to-Medium Business)

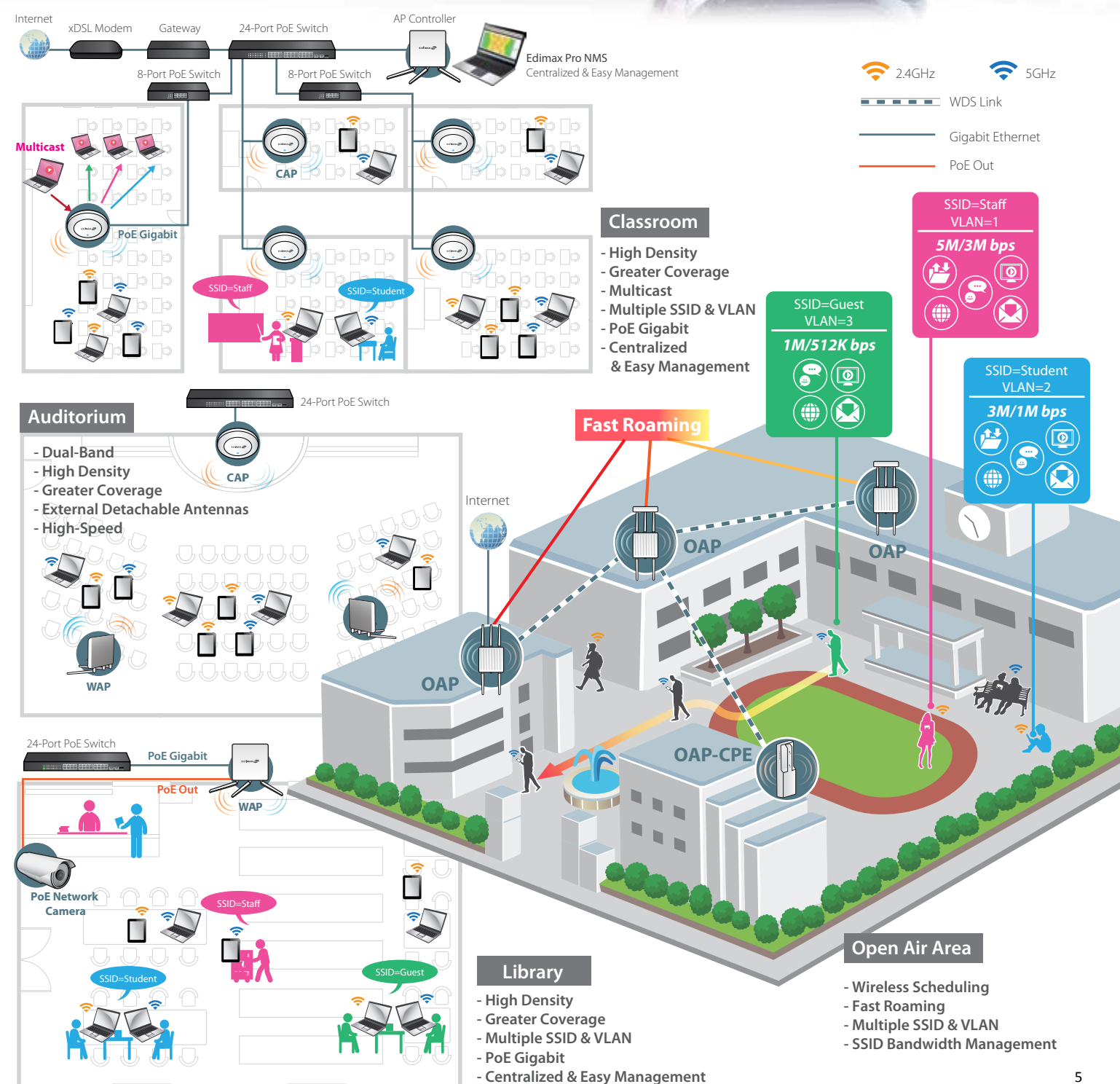
Wi-Fi is essential for businesses around the world and has become a real, cost-effective alternative to traditional Ethernet networks. Smartphone, tablet and laptop use has exploded, with devices becoming more powerful and affordable than ever before. Employees, clients and customers not only expect to connect without wires, but depend on it. And your business depends on it. Effective wireless solutions improve productivity and provide strategic advantage. Business-critical applications can be accessed across an entire organization, and traditional departmental boundaries can be extended for new levels of collaboration, co-working and information flow.

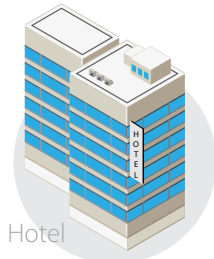
Business is faster, better and simply more efficient.



Education

Children and students are growing up in a new era, and education institutions face the challenge of keeping up. The evolution and modernization of learning environments is underway with wireless technology becoming as indispensable as traditional textbooks. The benefits of WLAN deployment are enormous with smart, interactive classrooms, new teaching tools, digital materials and enhanced interactive learning resources. And technological proficiency is an increasingly critical factor in young students' higher education and employment prospects later in life.

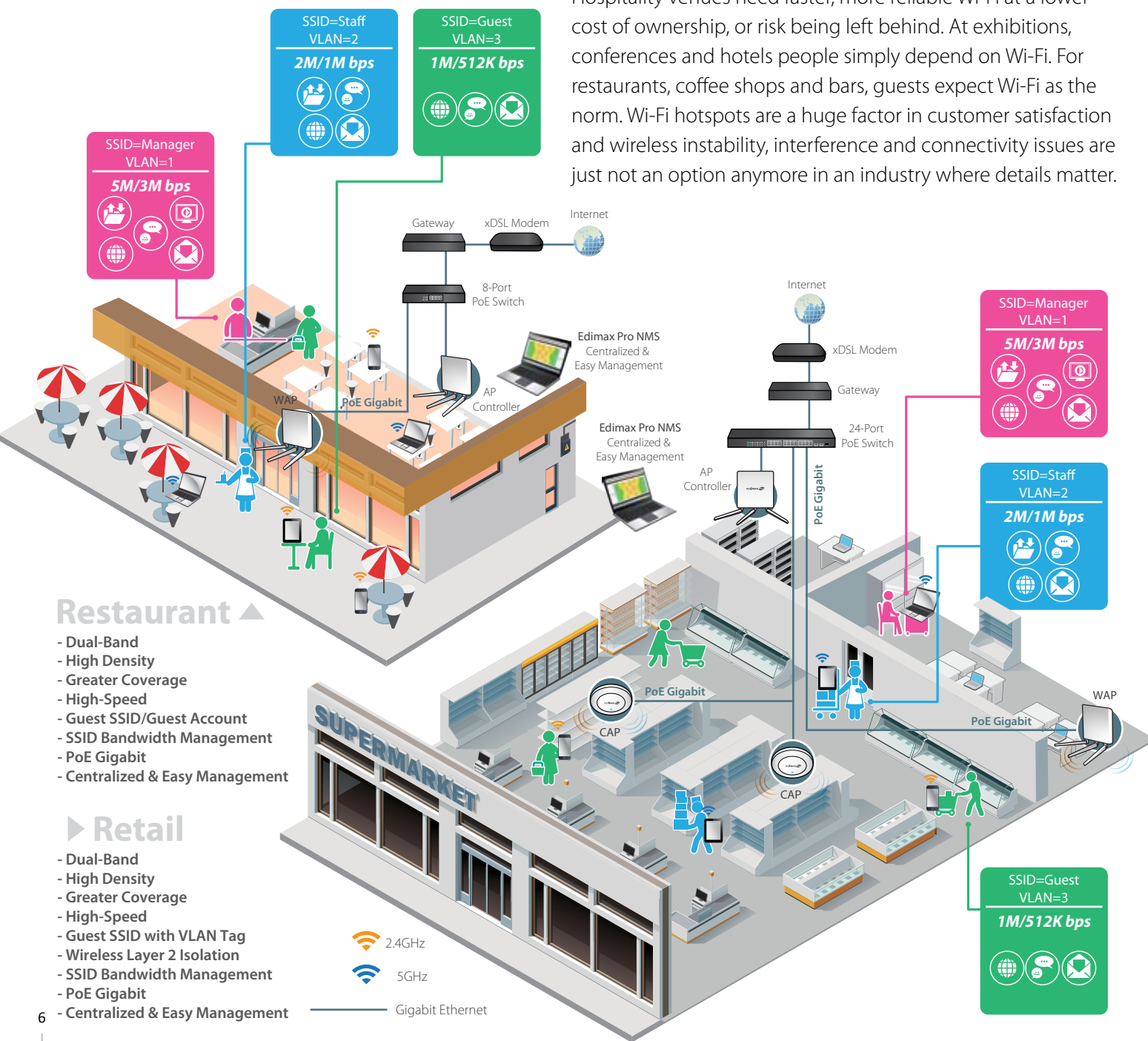




Hospitality Solution

Wi-Fi is essential for doing business and is a practical, cost-effective alternative to traditional Ethernet networks. But beyond that, smartphones, tablets and laptops are everywhere, and more powerful and affordable than ever before. Hospitality venues need to provide dynamic Wi-Fi infrastructures that cater for hundreds of devices, with guests often travelling with 2 or 3 smartphones or tablets each. Wi-Fi is a critical amenity for would-be hotel guests when choosing where to stay, with free high-speed Wi-Fi simply expected as standard.

Hospitality venues need faster, more reliable Wi-Fi at a lower cost of ownership, or risk being left behind. At exhibitions, conferences and hotels people simply depend on Wi-Fi. For restaurants, coffee shops and bars, guests expect Wi-Fi as the norm. Wi-Fi hotspots are a huge factor in customer satisfaction and wireless instability, interference and connectivity issues are just not an option anymore in an industry where details matter.

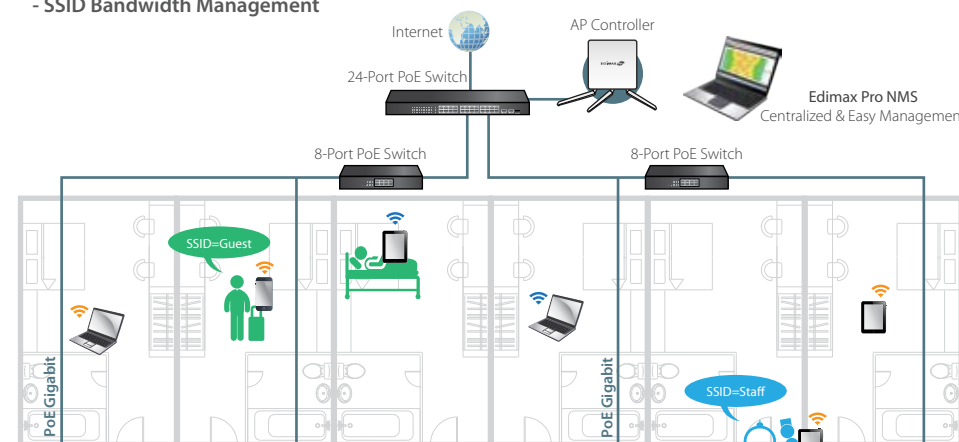


Lobby/ Reception

- Dual-band
- High Density
- Greater Coverage
- High-Speed
- Guest SSID/Guest Account
- Wireless Layer 2 Isolation
- SSID Bandwidth Management

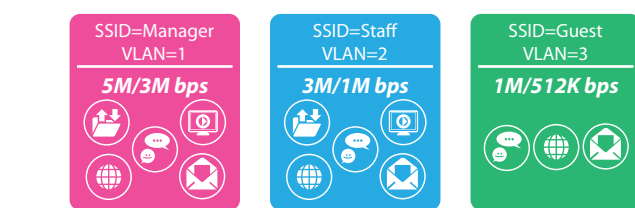
Server Room

- PoE Gigabit
- Centralized & Easy Management



Guest Room

- High Density
- Greater Coverage
- Multiple SSID & VLAN
- SSID Bandwidth Management
- PoE Gigabit
- Centralized & Easy Management



Office

- Guest SSID with VLAN Tag
- SSID Bandwidth Management

Open Air Area

- Greater Coverage
- High-Speed
- Guest SSID with VLAN Tag
- Wireless Layer 2 Isolation
- SSID Bandwidth Management

User-friendly Wi-Fi is an opportunity to differentiate your business. Personalize the guest experience, build customer loyalty and even offer targeted marketing. But Wi-Fi solutions aren't just about meeting the surge in customer demand. It's about improving operational efficiency in your organization and reducing costs. Improve communication between your team and access secure administration tools remotely, or use wireless PoS (Point of Sale) systems and handheld devices to take orders or manage check-ins and attendances.



WAP1750

3x3 AC1750 Dual-Band Wall Mount PoE Access Point



Features

- **802.11AC Dual-Band High Speed:** IEEE 802.11ac concurrent dual-band with 1750Mbps wireless speed.
- **Easy Installation:** Wall-mount design with easy installation kit.
- **Designed for High Density Usage:** Supports up to a hundred users simultaneously, ideal for crowded environments and BYOD (Bring Your Own Device) workplaces.
- **Multiple SSIDs for Security Management:** Supports up to 32 SSIDs (16 x 2.4GHz & 16 x 5GHz) ideal for multiple departments, user groups, customers or guests.
- **Fast Roaming:** Roams smoothly between APs without lag or interruption, ensuring top performance for video and voice streaming applications.
- **Wide Coverage & High Sensitivity:** Adjustable RF output power and high receiver sensitivity for wide coverage across large spaces.
- **Seamless Mobility:** 1.5x greater coverage than typical APs for blanket coverage to ensure seamless connectivity for Wi-Fi devices across enterprise environments.
- **Power over Ethernet:** Supports IEEE 802.3at PoE and IEEE 802.3af PSE out as well as included power adapter.
- **Built-In RADIUS Server:** With management for up to 256 user accounts.
- **Business Environments:** Mainstream choice for SMBs. Suitable for a wide range of commercial applications such as offices, hotels, meeting rooms, schools, campuses, resorts, retail and others.
- **Central Management:** Edimax Pro Network Management Suite (NMS) , easy and intuitive web-based central management suite, supports AP array architecture.
- **Optional Security Cover:** Prevents theft and tampering.



*Security Cover (Optional Accessory (SC1000))

Model		WAP1750
Description	3x3 AC1750 Dual-Band Wall Mount PoE Access Point	
Segment	High	
Hardware		
LAN Interface	Giga x 2	
PoE	802.3at(in)/ 802.3af(out) 10W	
Antenna	Type: 3 x External	
	Gain: 2 dBi (2.4 GHz), 2 dBi (5 GHz)	
Power	DC : 12V/4A	
	802.3at (PoE Injector Optional)	
Dimensions(LxWxH)	183x183x36 mm	
Weight(g)	560g	
Power Consumption (Full Loading)	Power Adapter	15W (Without PSE)
	PoE	-
Mounting	Wall/Desktop	
Console	RJ45	
WPS/Reset	WPS/Reset	
IP Standard	-	
LED Indicator	1. Power LED 2. Diag LED	
Environmental Conditions	Operating Temperature: 0°C (32°F) to 50°C (122°F) Operating Humidity: 90% or Less	
Power Saving	802.3az	
Internal Buzzer	v	
Security Cover	v (Optional)	
Wireless		
Standard	802.11 a/b/g/n/ac Concurrent Dual-Band	
No. of Radio	2	
Max. Output Power (dBm)	2.4GHz: 27.5(±2)dBm 5GHz: 27.5(±2)dBm	
Receive Sensitivity	≤ -93dBm	
Transmit Power (mW)	560mW/560mW	
Certification	CE/FCC	
Fast roaming	v	
Number of SSID(2.4G+5G)	16+16	
Performance		
Maximum Data Speed	450+1300Mbps	
Concurrent Clients	Up to 50 Per Radio	
Security		
Encryption	WEP/WPA/WPA2	
Wireless L2 Isolation	v	
Station Isolation	v	
IEEE 802.1x Authenticator	v	
EAP Authentication	EAP-FAST/EAP-SIM/EAP-AKA	
Hidden SSID	v	
MAC Address Filter	v	
Wireless STA	v	
Rogue AP Detection (w/NMS)	v	
Software		
Wireless Mode	AP/WDS AP/WDS Bridge/CB/Repeater	
802.1q VLAN	v (VID=1-4095)	
Spaning Tree	RSTP	
QoS	WMM(802.11e)	
	Max Associated Station No.	
Wireless Schedule On/Off	v	
Bandwidth Management by SSID	v	
Pass-Through	IPv6 and VPN(PPTP,L2TP,lpsec)	
DSCP (802.1p)	v	
Multicast to Unicast	v	
Management		
Deployment	Standalone	
	Managed by Edimax NMS	
Configuration	Http/Https	
	SNMP v1, v2c, v3	
	CLI (Telnet,SSH)	
Radius Server	Build-in	
Auto-Channel	v	
Private MIB	v	



WAP1200

2x2 AC1200 Dual-Band Wall Mount PoE Access Point



Features

- **802.11AC Dual-Band High Speed:** IEEE 802.11ac concurrent dual-band with 1200Mbps wireless speed.
- **Easy Installation:** Wall-mount design with easy installation kit.
- **Designed for High Density Usage:** Supports up to a hundred users simultaneously, ideal for crowded environments and BYOD (Bring Your Own Device) workplaces.
- **Multiple SSIDs for Security Management:** Supports up to 32 SSIDs (16 x 2.4GHz & 16 x 5GHz) ideal for multiple departments, user groups, customers or guests.
- **Fast Roaming:** Roams smoothly between APs without lag or interruption, ensuring top performance for video and voice streaming applications.
- **Wide Coverage & High Sensitivity:** Adjustable RF output power and high receiver sensitivity for wide coverage across large spaces.
- **Seamless Mobility:** 1.5x greater coverage than typical APs for blanket coverage to ensure seamless connectivity for Wi-Fi devices across enterprise environments.
- **Power over Ethernet:** Supports IEEE 802.3at PoE and IEEE 802.3af PSE out as well as included power adapter.
- **Built-In RADIUS Server:** With management for up to 256 user accounts.
- **Business Environments:** Mainstream choice for SMBs. Suitable for a wide range of commercial applications such as offices, hotels, meeting rooms, schools, campuses, resorts, retail and others.
- **Central Management:** Edimax Pro Network Management Suite (NMS) , easy and intuitive web-based central management suite, supports AP array architecture.
- **Optional Security Cover:** Prevents theft and tampering.



*Security Cover (Optional Accessory (SC1000))

Model		WAP1200
Description	2x2 AC1200 Dual-Band Wall Mount PoE Access Point	
Segment	Middle	
Hardware		
LAN Interface	Giga x 2	
PoE	802.3at(in)/ 802.3af(out)	
Antenna	Type: 2 x External	
	Gain: 2 dBi (2.4 GHz), 2 dBi (5 GHz)	
Power	DC : 12V / 2.5A (Without PSE)	
	802.3at (PoE Injector Optional)	
Dimensions(LxWxH)		183x183x36 mm
Weight(g)		527g
Power Consumption (Full Loading)	Power Adapter	12W (Without PSE)
	PoE	-
Mounting		Wall/Desktop
Console		-
WPS/Reset		WPS/Reset
IP Standard		-
LED Indicator		1. Power LED 2. Diag LED
Environmental Conditions		Operating Temperature: 0°C (32°F) to 50°C (122°F) Operating Humidity: 90% or Less
Power Saving		802.3az
Internal Buzzer		v
Security Cover		v (Optional)
Wireless		
Standard	802.11 a/b/g/n/ac Concurrent Dual-Band	
No. of Radio	2	
Max. Output Power (dBm)	2.4GHz: 27.5(±2)dBm 5GHz: 27.5(±2)dBm	
Receive Sensitivity	≤ -93dBm	
Transmit Power (mW)	400mW/400mW	
Certification	CE/FCC	
Fast roaming	v	
Number of SSID(2.4G+5G)	16+16	
Performance		
Maximum Data Speed	300+867Mbps	
Concurrent Clients	Up to 50 Per Radio	
Security		
Encryption	WEP/WPA/WPA2	
Wireless L2 Isolation	v	
Station Isolation	v	
IEEE 802.1x Authenticator	v	
EAP Authentication	EAP-FAST/EAP-SIM/EAP-AKA	
Hidden SSID	v	
MAC Address Filter	v	
Wireless STA	v	
Rogue AP Detection (w/NMS)	v	
Software		
Wireless Mode	AP/WDS AP/WDS Bridge/CB/Repeater	
802.1q VLAN	v (VID=1-4095)	
Spaning Tree	RSTP	
QoS	WMM(802.11e)	
	Max Associated Station No.	
Wireless Schedule On/Off	v	
Bandwidth Management by SSID	v	
Pass-Through	IPv6 and VPN(PPTP,L2TP,lsec)	
DSCP (802.1p)	v	
Multicast to Unicast	v	
Management		
Deployment	Standalone	
	Managed by Edimax NMS	
Configuration	Http/Https	
	SNMP v1, v2c, v3 CLI (Telnet,SSH)	
Radius Server	Build-in	
Auto-Channel	v	
Private MIB	v	

* Maximum performance, actual data rates and coverage will vary depending on network conditions and environmental factors.
* Product appearance and specifications are subject to change without notice.



CAP1750

3x3 AC1750 Dual-Band Ceiling Mount PoE Access Point



Features

- **802.11AC Dual-Band High Speed:** IEEE 802.11ac concurrent dual-band with 1750Mbps wireless speed.
- **Easy Installation:** Ceiling-mount & T-rail mount design with easy installation kit.
- **Compact & Durable Housing:** Ultra slim design with UL94-5VB flame-retardant plastic housing.
- **Designed for High Density Usage:** Supports up to a hundred users simultaneously, ideal for crowded environments and BYOD (Bring Your Own Device) workplaces.
- **Multiple SSIDs for Security Management:** Supports up to 32 SSIDs (16 x 2.4GHz & 16 x 5GHz) ideal for multiple departments, user groups, customers or guests.
- **Fast Roaming:** Roams smoothly between APs without lag or interruption, ensuring top performance for video and voice streaming applications.
- **Wide Coverage & High Sensitivity:** Adjustable RF output power and high receiver sensitivity for wide coverage across large spaces.
- **Seamless Mobility:** 1.5x greater coverage than typical APs for blanket coverage to ensure seamless connectivity for Wi-Fi devices across enterprise environments.
- **Power over Ethernet:** Supports IEEE 802.3af PoE as well as included power adapter.
- **Built-In RADIUS Server:** With management for up to 256 user accounts.
- **Business Environments:** Mainstream choice for SMBs. Suitable for a wide range of commercial applications such as offices, hotels, meeting rooms, schools, campuses, resorts, retail and others.
- **Central Management:** Edimax Pro Network Management Suite (NMS), easy and intuitive web-based central management suite, supports AP array architecture.



Model		CAP1750
Description		3x3 AC1750 Dual-Band Ceiling Mount PoE Access Point
Segment		High
Hardware		
LAN Interface		Giga x 1
PoE		802.3at
Antenna		Type: 6 x Built-in PIFA (3 x 2.4 GHz, 3 x 5 GHz) Gain: 6 dBi (2.4 GHz), 5 dBi (5 GHz) max.
Power		DC : 12V/2.5A 802.3at (PoE Injector Optional)
Dimensions(LxWxH)		200(D)x40(H) mm
Weight(g)		700g
Power Consumption (Full Loading)	Power Adapter	15W (Without USB)
	PoE	18W
Mounting Console		Ceiling
WPS/Reset		Reset
IP Standard		-
LED Indicator		1. Power LED 2. Diag LED
Environmental Conditions		Operating Temperature: 0°C (32°F) to 40°C (104°F) Operating Humidity: 90% or Less UL94-5VB Flammability Rating
Power Saving		802.3az
Internal Buzzer		v
Security Cover		-
Wireless		
Standard		802.11 a/b/g/n/ac Concurrent Dual-Band
No. of Radio		2
Max. Output Power (dBm)		2.4GHz: 27.5(±2)dBm 5GHz: 27.5(±2)dBm
Receive Sensitivity		≤ -93dBm
Transmit Power (mW)		560mW/560mW
Certification		CE/FCC
Fast roaming		v
Number of SSID(2.4G+5G)		16+16
Performance		
Maximum Data Speed		450+1300Mbps
Concurrent Clients		Up to 50 Per Radio
Security		
Encryption		WEP/WPA/WPA2
Wireless L2 Isolation		v
Station Isolation		v
IEEE 802.1x Authenticator		v
EAP Authentication		EAP-FAST/EAP-SIM/EAP-AKA
Hidden SSID		v
MAC Address Filter		v
Wireless STA		v
Rogue AP Detection (w/NMS)		v
Software		
Wireless Mode		AP/WDS AP/WDS Bridge
802.1q VLAN		v (VID=1-4095)
Spaning Tree		RSTP
QoS		WMM(802.11e) Max Associated Station No.
Wireless Schedule On/Off		v
Bandwidth Management by SSID		v
Pass-Through		IPv6 and VPN(PPTP,L2TP,l2tpsec)
DSCP (802.1p)		v
Multicast to Unicast		v
Management		
Deployment		Standalone Managed by Edimax NMS
Configuration		Http/Https SNMP v1, v2c, v3 CLI (Telnet,SSH)
Radius Server		Build-in
Auto-Channel		v
Private MIB		v



CAP1200

2x2 AC1200 Dual-Band Ceiling Mount PoE Access Point



Features

- **802.11AC Dual-Band High Speed:** IEEE 802.11ac concurrent dual-band with 1750Mbps wireless speed.
- **Easy Installation:** Ceiling-mount & T-rail mount design with easy installation kit.
- **Compact & Durable Housing:** Ultra slim design with UL94-5VB flame-retardant plastic housing.
- **Designed for High Density Usage:** Supports up to a hundred users simultaneously, ideal for crowded environments and BYOD (Bring Your Own Device) workplaces.
- **Multiple SSIDs for Security Management:** Supports up to 32 SSIDs (16 x 2.4GHz & 16 x 5GHz) ideal for multiple departments, user groups, customers or guests.
- **Fast Roaming:** Roams smoothly between APs without lag or interruption, ensuring top performance for video and voice streaming applications.
- **Wide Coverage & High Sensitivity:** Adjustable RF output power and high receiver sensitivity for wide coverage across large spaces.
- **Seamless Mobility:** 1.5x greater coverage than typical APs for blanket coverage to ensure seamless connectivity for Wi-Fi devices across enterprise environments.
- **Power over Ethernet:** Supports IEEE 802.3af PoE as well as included power adapter.
- **Built-In RADIUS Server:** With management for up to 256 user accounts.
- **Business Environments:** Mainstream choice for SMBs. Suitable for a wide range of commercial applications such as offices, hotels, meeting rooms, schools, campuses, resorts, retail and others.
- **Central Management:** Edimax Pro Network Management Suite (NMS), easy and intuitive web-based central management suite, supports AP array architecture.



Model		CAP1200
Description		2x2 AC1200 Dual-Band Ceiling Mount PoE Access Point
Segment		Middle
Hardware		
LAN Interface		Giga x 1
PoE		802.3af (support 802.3at)
Antenna		Type: 4 x Built-in PIFA (2 x 2.4 GHz, 2 x 5 GHz) Gain: 2.82 dBi (2.4 GHz) 4 dBi (5 GHz) max.
Power		DC : 12V/1A 802.3af (PoE Injector Optional)
Dimensions(LxWxH)		176(D)x32(H) mm
Weight(g)		305.7g
Power Consumption (Full Loading)	Power Adapter	11W
	PoE	-
Mounting Console		Ceiling
WPS/Reset		Reset
IP Standard		-
LED Indicator		1. Power LED 2. Diag LED
Environmental Conditions		Operating Temperature: 0°C (32°F) to 40°C (104°F) Operating Humidity: 90% or Less UL94-5VB Flammability Rating
Power Saving		802.3az
Internal Buzzer		v
Security Cover		-
Wireless		
Standard		802.11 a/b/g/n/ac Concurrent Dual-Band
No. of Radio		2
Max. Output Power (dBm)		2.4GHz: 26dBm 5GHz: 26dBm
Receive Sensitivity		≤ -95dBm
Transmit Power (mW)		400mW/400mW
Certification		CE/FCC
Fast roaming		v
Number of SSID(2.4G+5G)		16+16
Performance		
Maximum Data Speed		300+867Mbps
Concurrent Clients		Up to 50 Per Radio
Security		
Encryption		WEP/WPA/WPA2
Wireless L2 Isolation		v
Station Isolation		v
IEEE 802.1x Authenticator		v
EAP Authentication		EAP-FAST/EAP-SIM/EAP-AKA
Hidden SSID		v
MAC Address Filter		v
Wireless STA		v
Rogue AP Detection (w/NMS)		v
Software		
Wireless Mode		AP/WDS AP/WDS Bridge
802.1q VLAN		v (VID=1-4095)
Spaning Tree		RSTP
QoS		WMM(802.11e) Max Associated Station No.
Wireless Schedule On/Off		v
Bandwidth Management by SSID		v
Pass-Through		IPv6 and VPN(PPTP,L2TP,l2tpsec)
DSCP (802.1p)		v
Multicast to Unicast		v
Management		
Deployment		Standalone Managed by Edimax NMS
Configuration		Http/Https SNMP v1, v2c, v3 CLI (Telnet,SSH)
Radius Server		Build-in
Auto-Channel		v
Private MIB		v

* Maximum performance, actual data rates and coverage will vary depending on network conditions and environmental factors.
* Product appearance and specifications are subject to change without notice.



CAP300

2x2 N300 Ceiling Mount PoE Access Point



Features

- **802.11N High Speed:** IEEE 802.11n with 300Mbps wireless speed.
- **Easy Installation:** Ceiling-mount & T-rail mount design with easy installation kit.
- **Compact & Durable Housing:** Ultra slim design with UL94-5VB flame-retardant plastic housing.
- **Multiple SSIDs for Security Management:** Supports up to 16 SSIDs ideal for multiple departments, user groups, customers or guests.
- **Fast Roaming:** Roams smoothly between APs without lag or interruption, ensuring top performance for video and voice streaming applications.
- **Wide Coverage & High Sensitivity:** Adjustable RF output power and high receiver sensitivity for wide coverage across large spaces.
- **Seamless Mobility:** 1.5x greater coverage than typical APs for blanket coverage to ensure seamless connectivity for Wi-Fi devices across enterprise environments.
- **Power over Ethernet:** Supports IEEE 802.3af PoE as well as included power adapter.
- **Built-In RADIUS Server:** With management for up to 256 user accounts.
- **Business Environments:** Affordable choice for entry level solutions. Suitable for a wide range of commercial applications such as offices, hotels, meeting rooms, schools, campuses, resorts, retail and others.
- **Central Management:** Edimax Pro Network Management Suite (NMS), easy and intuitive web-based central management suite, supports AP array architecture.



Model		CAP300
Description		2x2 N300 Ceiling Mount PoE Access Point
Segment		Entry
Hardware		
LAN Interface		Giga x 1
PoE		802.3af (support 802.3at)
Antenna		Type: 2 x Built-in PIFA Gain: 2.82dBi max.
Power		DC : 12V/1A 802.3af (PoE Injector Optional)
Dimensions(LxWxH)		176(D)x32(H) mm
Weight(g)		287.3g
Power Consumption (Full Loading)	Power Adapter	6.5W
	PoE	-
Mounting		Ceiling
Console		-
WPS/Reset		Reset
IP Standard		-
LED Indicator		1. Power LED 2. Diag LED
Environmental Conditions		Operating Temperature: 0°C (32°F) to 50°C (122°F) Operating Humidity: 90% or Less UL94-5VB Flammability Rating
Power Saving		802.3az
Internal Buzzer		v
Security Cover		-
Wireless		
Standard		802.11 b/g/n
No. of Radio		1
Max. Output Power (dBm)		2.4GHz: 26dBm
Receive Sensitivity		≤ -95dBm
Transmit Power (mW)		400mW
Certification		CE/FCC
Fast roaming		v
Number of SSID(2.4G)		16
Performance		
Maximum Data Speed		300Mbps
Concurrent Clients		Up to 50
Security		
Encryption		WEP/WPA/WPA2
Wireless L2 Isolation		v
Station Isolation		v
IEEE 802.1x Authenticator		v
EAP Authentication		EAP-FAST/EAP-SIM/EAP-AKA
Hidden SSID		v
MAC Address Filter		v
Wireless STA		v
Rogue AP Detection (w/NMS)		v
Software		
Wireless Mode		AP/WDS AP/WDS Bridge
802.1q VLAN		v (VID=1-4095)
Spaning Tree		RSTP
QoS		WMM(802.11e) Max Associated Station No.
Wireless Schedule On/Off		v
Bandwidth Management by SSID		v
Pass-Through		IPv6 and VPN(PPTP,L2TP,Ipsec)
DSCP (802.1p)		v
Multicast to Unicast		v
Management		
Deployment		Standalone Managed by Edimax NMS
Configuration		Http/Https SNMP v1, v2c, v3 CLI (Telnet,SSH)
Radius Server		Build-in
Auto-Channel		v
Private MIB		v

EW-7428HCn

N300 High Power Ceiling Mount Wireless PoE Range Extender / Access Point



Features

- **802.11N High Speed:** IEEE 802.11n with 300Mbps wireless speed.
- **Compact Design:** Ceiling-mounted, compact design.
- **Multiple SSIDs for Security Management:** Supports up to 5 SSIDs ideal for multiple departments, user groups, customers or guests.
- **Wide Coverage:** 600mW high-power output for wide coverage across large spaces.
- **Power over Ethernet:** Supports IEEE 802.3af PoE as well as included power adapter.
- **Business Environments:** Affordable entry level solutions suitable for home, SOHO and SMB environments.
- **Easy Installation:** iQ Setup for smart, automatic setup.
- **Energy Saving & Wi-Fi Scheduling:** Scheduling function to switch LEDs and Wi-Fi on/off and reduce power consumption.



Model		EW-7428HCn
Description		N300 High Power Ceiling Mount Wireless PoE Range Extender / Access Point
Segment		Entry
Hardware		
LAN Interface		Fast Ethernet x 1
PoE		802.3af (support 802.3at)
Antenna		Type: 2 x Built-in PIFA Gain: 3dBi max.
Power		DC : 5V/2A 802.3af
Dimensions(LxWxH)		46 (H) x 105 (W) x 105 (L) mm
Weight(g)		133g
Power Consumption (Full Loading)	Power Adapter	-
	PoE	-
Mounting		Ceiling
Console		-
WPS/Reset		WPS/Reset
IP Standard		-
LED Indicator		1. Power LED 2. WLAN LED 3. LAN LED
Environmental Conditions		Operating Temperature: 0°C (32°F) to 40°C (104°F) Operating Humidity: 90% or less UL94-V0 Flammability rating
Power Saving		-
Internal Buzzer		-
Security Cover		-
Wireless		
Standard		802.11 b/g/n
No. of Radio		1
Max. Output Power (dBm)		2.4GHz: 26dBm
Receive Sensitivity		≤ -96dBm
Transmit Power (mW)		600mW
Certification		CE/FCC
Fast roaming		-
Number of SSID(2.4G)		5
Performance		
Maximum Data Speed		300Mbps
Concurrent Clients		Up to 16
Security		
Encryption		WEP / WPA / WPA2
Wireless L2 Isolation		v
Station Isolation		v
IEEE 802.1x Authenticator		v
EAP Authentication		-
Hidden SSID		v
MAC Address Filter		v
Wireless STA		-
Rogue AP Detection (w/NMS)		-
Software		
Wireless Mode		AP / Station-Infrastructure / AP Bridge-Point to Point / AP Bridge-Point to Multi-Point / AP Bridge-WDS / Universal Repeater
802.1q VLAN		v (VID=1-4094)
Spaning Tree		-
QoS		WMM
Wireless Schedule On/Off		-
Wireless Schedule On/Off		v
Bandwidth Management by SSID		-
Pass-Through		-
DSCP (802.1p)		-
Multicast to Unicast		v
Management		
Deployment		v
Configuration		-
Configuration		Http
Configuration		-
Configuration		Telnet
Radius Server		-
Auto-Channel		v
Private MIB		-

* Maximum performance, actual data rates and coverage will vary depending on network conditions and environmental factors.
* Product appearance and specifications are subject to change without notice.



OAP1750

3x3 AC1750 Dual-Band Outdoor PoE Access Point



Features

- **802.11AC Dual-Band High Speed:** IEEE 802.11ac concurrent dual-band with 1750Mbps wireless speed.
- **Easy Installation:** Wall-mount design with easy installation kit.
- **Support up to 7 Modes:** Build-in AP/WDS AP/WDS bridge/CB/Repeater/CR/AP Route for Versatile Application Usage
- **Designed for High Density Usage:** Supports up to a hundred users simultaneously, ideal for crowded environments and BYOD (Bring Your Own Device) workplaces.
- **Multiple SSIDs for Security Management:** Supports up to 32 SSIDs (16 x 2.4GHz & 16 x 5GHz) ideal for multiple departments, user groups, customers or guests.
- **Fast Roaming:** Roams smoothly between APs without lag or interruption, ensuring top performance for video and voice streaming applications.
- **Wide Coverage & High Sensitivity:** Adjustable RF output power and high receiver sensitivity for wide coverage across large spaces.
- **Seamless Mobility:** 1.5x greater coverage than typical APs for blanket coverage to ensure seamless connectivity for Wi-Fi devices across enterprise environments.
- **Power over Ethernet:** Supports IEEE 802.3at PoE and IEEE 802.3af PSE out as well as included power adapter.
- **Built-In RADIUS Server:** With management for up to 256 user accounts.
- **Business Environments:** Mainstream choice for SMBs. Suitable for a wide range of commercial applications such as offices, hotels, meeting rooms, schools, campuses, resorts, retail and others.
- **Central Management:** Edimax Pro Network Management Suite (NMS) , easy and Intuitive web-based central management suite, supports AP array architecture.
- **Durable Housing Design:** Supports IP67 Weatherproof.



Model		OAP1750
Description	3x3 AC1750 Dual-Band Outdoor PoE Access Point	
Segment	Base Station	
Hardware		
LAN Interface	Giga x 1	
PoE	802.3at	
Antenna	Type:	6 x External
	Gain:	4 dBi (2.4 GHz), 6 dBi (5 GHz)
Power	-	
Dimensions(LxWxH)	260x250x95 mm	
Weight(g)	2.87kg	
Power Consumption (Full Loading)	Power Adapter	-
	PoE	18W
Mounting	Pole/Wall	
Console	-	
WPS/Reset	Reset	
IP Standard	IP67	
LED Indicator	1. Power LED 2. WLAN LED 3. LAN LED	
Environmental Conditions	Operating Temperature: -40°C (-40°F) to 70°C (158°F) Operating Humidity: 90% or Less	
Power Saving	802.3az	
Internal Buzzer	-	
Security Cover	-	
Wireless		
Standard	802.11 a/b/g/n/ac Concurrent Dual-Band	
No. of Radio	2	
Max. Output Power (dBm)	2.4GHz: 27.5(±2)dBm 5GHz: 27.5(±2)dBm	
Receive Sensitivity	≤ -93dBm	
Transmit Power (mW)	560mW/560mW	
Certification	CE/FCC	
Fast roaming	v	
Number of SSID(2.4G+5G)	16+16	
Performance		
Maximum Data Speed	450+1300Mbps	
Concurrent Clients	Up to 50 Per Radio	
Security		
Encryption	WEP/WPA/WPA2	
Wireless L2 Isolation	v	
Station Isolation	v	
IEEE 802.1x Authenticator	v	
EAP Authentication	EAP-FAST/EAP-SIM/EAP-AKA	
Hidden SSID	v	
MAC Address Filter	v	
Wireless STA	v	
Rogue AP Detection (w/ NMS)	v	
Software		
Wireless Mode	AP/WDS AP/WDS Bridge/CB/Repeater/CR/AP Router	
802.1q VLAN	v (VID=1-4095)	
Spaning Tree	RSTP	
QoS	WMM(802.11e) Max Associated Station No.	
Wireless Schedule On/Off	v	
Bandwidth Management by SSID	v	
Pass-Through DSCP (802.1p)	IPv6 and VPN(PPTP,L2TP,Ipsec) v	
Multicast to Unicast	v	
Management		
Deployment	Standalone Managed by Edimax NMS	
Configuration	Http/Https SNMP v1, v2c, v3 CLI (Telnet,SSH)	
Radius Server	Build-in	
Auto-Channel	v	
Private MIB	v	

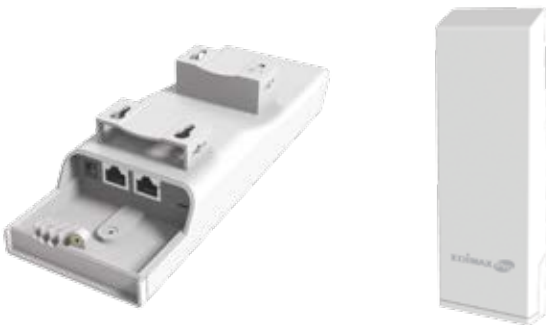
OAP900

2x2 AC900 Outdoor PoE CPE/Access Point



Features

- **802.11AC 5GHz High Speed:** IEEE 802.11ac with 900Mbps wireless speed.
- **Easy Installation:** Wall-mount design with easy installation kit.
- **Dual Gigabit Ethernet Connection:** Flexible to connect other IP-based device(Ex. IP Cam)
- **Support up to 7 Modes:** Build-in AP/WDS AP/WDS bridge/CB/Repeater/CR/AP Route for Versatile Application Usage
- **Business Environments:** Mainstream choice for SMBs. Suitable for a wide range of commercial applications such as offices, hotels, meeting rooms, schools, campuses, resorts, retail and others.
- **Central Management:** Edimax Pro Network Management Suite (NMS) , easy and Intuitive web-based central management suite, supports AP array architecture.
- **Durable Housing Design:** Supports IP65 weatherproof.



Model		OAP900
Description	2x2 AC900 Outdoor PoE CPE/Access Point	
Segment	CPE/AP	
Hardware		
LAN Interface	Giga x 2	
PoE	802.3af	
Antenna	Type:	2 x Built-in PIFA (2 x 5 GHz)
	Gain:	14 dBi (5 GHz)
Power	-	
Dimensions(LxWxH)	90x210x35 mm	
Weight(g)	TBC	
Power Consumption (Full Loading)	Power Adapter	-
	PoE	TBC
Mounting	Pole/Wall	
Console	-	
WPS/Reset	Reset	
IP Standard	IP65	
LED Indicator	1. Power LED 2. WLAN LED x4 3. LAN1 LED 4. LAN2 LED	
Environmental Conditions	Operating Temperature: -20°C (-4°F) to 60°C (140°F) Operating Humidity: 90% or Less	
Power Saving	802.3az	
Internal Buzzer	v	
Security Cover	-	
Wireless		
Standard	802.11 a/n/ac	
No. of Radio	1	
Max. Output Power (dBm)	5GHz: 26dBm	
Receive Sensitivity	≤ -93dBm	
Transmit Power (mW)	400mW	
Certification	CE/FCC	
Fast roaming	v	
Number of SSID(5G)	16	
Performance		
Maximum Data Speed	900Mbps	
Concurrent Clients	Up to 50	
Security		
Encryption	WEP/WPA/WPA2	
Wireless L2 Isolation	v	
Station Isolation	v	
IEEE 802.1x Authenticator	v	
EAP Authentication	EAP-FAST/EAP-SIM/EAP-AKA	
Hidden SSID	v	
MAC Address Filter	v	
Wireless STA	v	
Rogue AP Detection (w/ NMS)	v	
Software		
Wireless Mode	AP/WDS AP/WDS Bridge/CB/Repeater/CR/AP Router	
802.1q VLAN	v (VID=1-4095)	
Spaning Tree	RSTP	
QoS	WMM(802.11e) Max Associated Station No.	
Wireless Schedule On/Off	v	
Bandwidth Management by SSID	v	
Pass-Through DSCP (802.1p)	IPv6 and VPN(PPTP,L2TP,Ipsec) v	
Multicast to Unicast	v	
Management		
Deployment	Standalone Managed by Edimax NMS	
Configuration	Http/Https SNMP v1, v2c, v3 CLI (Telnet,SSH)	
Radius Server	Build-in	
Auto-Channel	v	
Private MIB	v	

• Maximum performance, actual data rates and coverage will vary depending on network conditions and environmental factors.
• Product appearance and specifications are subject to change without notice.

Access Points - Comparison Table



Model	WAP1750	WAP1200	CAP1750	CAP1200
Description	3x3 AC1750 Dual-Band Wall Mount PoE	2x2 AC1200 Dual-Band Wall Mount PoE	3x3 AC1750 Dual-Band Ceiling Mount PoE	2x2 AC1200 Dual-Band Ceiling Mount PoE
Segment	High	Middle	High	Middle
Hardware				
LAN Interface	Giga x 2	Giga x 2	Giga x 1	Giga x 1
PoE	802.3at(in) /802.3af(Out) 10W	802.3at(in) /802.3af(out)	802.3at	802.3af (support 802.3at)
Antenna	Type: 3 x External Gain: 2 dBi (2.4 GHz), 2 dBi (5 GHz)	Type: 2 x External Gain: 2 dBi (2.4 GHz), 2 dBi (5 GHz)	Type: 6 x Built-in PIFA (3 x 2.4 GHz, 3 x 5 GHz) Gain: 6 dBi (2.4 GHz) 5 dBi (5 GHz) max.	Type: 4 x Built-in PIFA (2 x 2.4 GHz, 2 x 5 GHz) Gain: 2.82 dBi (2.4 GHz) 4 dBi (5 GHz) max.
Power	DC : 12V/4A 802.3at (PoE Injector Optional)	DC : 12V/2.5A(Without PSE) 802.3at(PoE Injector Optional)	DC : 12V/2.5A 802.3at(PoE Injector Optional)	DC : 12V/1A 802.3af (PoE Injector Optional)
Dimensions(LxWxH)	183x183x36 mm	183x183x36 mm	200(D)x40(H) mm	176(D)x32(H) mm
Weight(g)	560g	527g	700g	305.7g
Power Consumption (Full Loading)	Power Adapter 15W (Without PSE) PoE -	12W (Without PSE) -	15W(Without USB) 18W	11W -
Mounting Console	Wall/Desktop	Wall/Desktop	Ceiling	Ceiling
WPS/Reset	WPS/Reset	WPS/Reset	Reset	Reset
IP Standard	-	-	-	-
LED Indicator	1. Power LED 2. Diag LED	1. Power LED 2. Diag LED	1. Power LED 2. Diag LED	1. Power LED 2. Diag LED
Environmental Conditions	Operating Temperature: 0°C (32°F) to 50°C (122°F) Operating Humidity: 90% or Less -	Operating Temperature: 0°C (32°F) to 50°C (122°F) Operating Humidity: 90% or Less -	Operating Temperature: 0°C (32°F) to 40°C (104°F) Operating Humidity: 90% or Less UL94-5VB Flammability Rating	Operating Temperature: 0°C (32°F) to 40°C (104°F) Operating Humidity: 90% or Less UL94-5VB Flammability Rating
Power Saving	802.3az	802.3az	802.3az	802.3az
Internal Buzzer	v	v	v	v
Security Cover	v (Optional)	v (Optional)	-	-
Wireless				
Standard	802.11 a/b/g/n/ac Concurrent Dual-Band	802.11 a/b/g/n/ac Concurrent Dual-Band	802.11 a/b/g/n/ac Concurrent Dual-Band	802.11 a/b/g/n/ac Concurrent Dual-Band
No. of Radio	2	2	2	2
Max. Output Power (dBm)	2.4GHz: 27.5(±2)dBm 5GHz: 27.5(±2)dBm	2.4GHz: 27.5(±2)dBm 5GHz: 27.5(±2)dBm	2.4GHz: 27.5(±2)dBm 5GHz: 27.5(±2)dBm	2.4GHz: 26dBm 5GHz: 26dBm
Receive Sensitivity	≤ -93dBm	≤ -93dBm	≤ -93dBm	≤ -93dBm
Transmit Power (mW)	560mW/560mW	400mW/400mW	560mW/560mW	400mW/400mW
Certification	CE/FCC	CE/FCC	CE/FCC	CE/FCC
Fast roaming	v	v	v	v
Number of SSID(2.4G+5G)	16+16	16+16	16+16	16+16
Performance				
Maximum Data Speed	450+1300Mbps	300+867Mbps	450+1300Mbps	300+867Mbps
Concurrent Clients	Up to 50 Per Radio	Up to 50 Per Radio	Up to 50 Per Radio	Up to 50 Per Radio
Security				
Encryption	WEP/WPA/WPA2	WEP/WPA/WPA2	WEP/WPA/WPA2	WEP/WPA/WPA2
Wireless L2 Isolation	v	v	v	v
Station Isolation	v	v	v	v
IEEE 802.1x Authenticator	v	v	v	v
EAP Authentication	EAP-FAST/EAP-SIM/EAP-AKA	EAP-FAST/EAP-SIM/EAP-AKA	EAP-FAST/EAP-SIM/EAP-AKA	EAP-FAST/EAP-SIM/EAP-AKA
Hidden SSID	v	v	v	v
MAC Address Filter	v	v	v	v
Wireless STA	v	v	v	v
Rogue AP Detection (w/ NMS)	v	v	v	v
Software				
Wireless Mode	AP/WDS AP/WDS Bridge/CB/Repeater	AP/WDS AP/WDS Bridge/CB/Repeater	AP/WDS AP/WDS Bridge	AP/WDS AP/WDS Bridge
802.1q VLAN	v (VID=1-4095)	v (VID=1-4095)	v (VID=1-4095)	v (VID=1-4095)
Spanning Tree	RSTP	RSTP	RSTP	RSTP
QoS	WMM(802.11e) Max Associated Station No.	WMM(802.11e) Max Associated Station No.	WMM(802.11e) Max Associated Station No.	WMM(802.11e) Max Associated Station No.
Wireless Schedule On/Off	v	v	v	v
Bandwidth Management by SSID	v	v	v	v
Pass-Through	IPv6 and VPN(PPTP,L2TP,l2tpsec)	IPv6 and VPN(PPTP,L2TP,l2tpsec)	IPv6 and VPN(PPTP,L2TP,l2tpsec)	IPv6 and VPN(PPTP,L2TP,l2tpsec)
DSCP (802.1p)	v	v	v	v
Multicast to Unicast	v	v	v	v
Management				
Deployment	Standalone Managed by Edimax NMS	Standalone Managed by Edimax NMS	Standalone Managed by Edimax NMS	Standalone Managed by Edimax NMS
Configuration	Http/Https SNMP v1, v2c, v3 CLI (Telnet,SSH)	Http/Https SNMP v1, v2c, v3 CLI (Telnet,SSH)	Http/Https SNMP v1, v2c, v3 CLI (Telnet,SSH)	Http/Https SNMP v1, v2c, v3 CLI (Telnet,SSH)
Radius Server	Build-in	Build-in	Build-in	Build-in
Auto-Channel	v	v	v	v
Private MIB	v	v	v	v

Access Points - Comparison Table



CAP300	EW-7428HCn	OAP1750	OAP900
2x2 N300 Ceiling Mount PoE	N300 High Power Ceiling Mount Wireless PoE Range Extender / Access Point	3x3 AC1750 Dual-Band Outdoor PoE	2x2 AC900 Outdoor PoE
Entry	Entry	BaseStation	CPE/AP
Giga x 1	Fast Ethernet x 1	Giga x 1	Giga x 2
802.3af (support 802.3at)	802.3af (support 802.3at)	802.3at	802.3af
Type: 2 x Built-in PIFA	Type: 2 x Built-in PIFA	Type: 6 x External	Type: 2 x Built-in PIFA (2 x 5 GHz)
Gain: 2.82dBi max. (2.4 GHz)	Gain: 3dBi max. (2.4 GHz)	Gain: 4 dBi (2.4 GHz), 6 dBi (5 GHz)	Gain: 14 dBi (5 GHz)
DC : 12V/1A	DC : 5V/2A	-	-
802.3af(PoE Injector Optional)	802.3af	802.3at(PoE Injector)	Passive PoE
176(D)x32(H) mm	46 (H) x 105 (W) x 105 (L) mm	260x250x95 mm	90x210x35 mm
287.3g	133g	2.87kg	TBC
6.5W	-	-	-
-	-	18W	TBC
Ceiling	Ceiling	Pole/Wall	Pole/Wall
Reset	WPS/Reset	Reset	Reset
-	-	IP67	IP65
1. Power LED 2. Diag LED	1. Power LED 2. WLAN LED 3. LAN LED	1. Power LED 2. WLAN LED 3. LAN LED	1. Power LED 2. WLAN LED x4 3. LAN1 LED 4. LAN2 LED
Operating Temperature: 0°C (32°F) to 50°C (122°F)	Operating Temperature: 0°C (32°F) to 40°C (104°F)	Operating Temperature: -40°C (-40°F) to 70°C (158°F)	Operating Temperature: -20°C (-4°F) to 60°C (140°F)
Operating Humidity: 90% or Less UL94-5VB Flammability Rating	Operating Humidity: 90% or Less UL94-V0 Flammability Rating	Operating Humidity: 90% or Less	Operating Humidity: 90% or Less
802.3az	-	802.3az	802.3az
v	-	-	-
-	-	-	-
802.11 b/g/n	802.11 b/g/n	802.11 a/b/g/n/ac Concurrent Dual-Band	802.11 a/n/ac
1	1	2	1
2.4GHz: 26dBm	2.4GHz: 26dBm	2.4GHz: 27.5(±2)dBm 5GHz: 27.5(±2)dBm	5GHz: 26dBm
≤ -95dBm	≤ -96dBm	≤ -93dBm	≤ -93dBm
400mW	600mW	560mW/560mW	400mW
CE/FCC	CE/FCC	CE/FCC	CE/FCC
v	v	v	v
16	5	16+16	16
300Mbps Up to 50	300Mbps Up to 16	450+1300Mbps Up to 50 Per Radio	900Mbps Up to 50
WEP/WPA/WPA2	WEP/WPA/WPA2	WEP/WPA/WPA2	WEP/WPA/WPA2
v	v	v	v
v	v	v	v
v	v	v	v
EAP-FAST/EAP-SIM/EAP-AKA	-	EAP-FAST/EAP-SIM/EAP-AKA	EAP-FAST/EAP-SIM/EAP-AKA
v	v	v	v
v	v	v	v
v	-	v	v
v	-	v	v
AP/WDS AP/WDS Bridge	AP / Station-Infrastructure / AP Bridge-Point to Point / AP Bridge-Point to Multi-Point / AP Bridge-WDS / Universal Repeater	AP/WDS AP/WDS Bridge/CB/Repeater/ CR/AP Router	AP/WDS AP/WDS Bridge/CB/Repeater/ CR/AP Router
v (VID=1-4095)	v (VID=1-4094)	v (VID=1-4095)	v (VID=1-4095)
RSTP	-	RSTP	RSTP
WMM(802.11e)	WMM	WMM(802.11e)	WMM(802.11e)
Max Associated Station No.	-	Max Associated Station No.	Max Associated Station No.
v	v	v	v
v	-	v	v
IPv6 and VPN(PPTP,L2TP,l2tpsec)	-	IPv6 and VPN(PPTP,L2TP,l2tpsec)	IPv6 and VPN(PPTP,L2TP,l2tpsec)
v	-	v	v
v	v	v	v
Standalone	v	Standalone	Standalone
Managed by Edimax NMS	-	Managed by Edimax NMS	Managed by Edimax NMS
Http/Https	HTTP	Http/Https	Http/Https
SNMP v1, v2c, v3 CLI (Telnet,SSH)	-	SNMP v1, v2c, v3 CLI (Telnet,SSH)	SNMP v1, v2c, v3 CLI (Telnet,SSH)
Build-in	-	Build-in	Build-in
v	v	v	v
v	-	v	v



NMS

Network Management Suite
(Built in for Edimax Pro APs)



Features

- Manage up to 8 Edimax Pro APs.
- Suitable for SMB/SME environments.
- AP array master/slave structure.
- Local or built-in RADIUS (AAA) support for user and guest accounts.
- Batch setup/configuration.
- Group firmware upgrade & restart.
- Channel/RF power/load optimization.
- No additional PC required.
- Integrated in AP's existing firmware with no additional license fee.

Model	NMS
Description	Network Management Suit (NMS)
H/W	AP
License	Free
Segment	Entry
WAN	-
LAN	-
Console	-
Management	
Managed EdimaxPro AP #	1-8
Managed IP Device	v
Traffic Statistics	Network Traffic/CPU Loading/Memory Usage
Guest Log	v
Multiple Firmware Upgrade	v
Deployment	
L2 Auto-Discovery	v
AP Planning	v
Locate AP(Buzzer/LED)	v
WDS between APs	v
Google MAP Support	Q3
Radio Resource Management	
Client RSSI Threshold	v
Dynamic Channel Selection	v
Auto Pilot(Auto Channel/Power)	v
Security	
MAC Filtering	v
Blocking Intra-BSS Traffic	v
Rogue AP Detection	v
Wireless L2 Isolation	v
Access control	
Captive Portal (Internal & External)	v
Guest Account	v
RADIUS Authentication	v
RADIUS Accounting	v
Wireless QoS	
AP Load Balancing	Q3
WLAN Station Bandwidth Limiting (Per-SSID)	v
Diagnostic Tool	
Ping/Trace Route	v
Physical	
Primary/ Secondary Controller Support	Q3
Software Function Items	
Active AP	8
AP Groups	8
WLAN SSIDs	50
WLAN Groups	8
RADIUS Accounts	256
RADIUS Groups	8
Access Control (White-Black List)	256
Access Control Groups	8
Guest Network SSIDs	50
Guest Network Groups	8
Guest Accounts	8

* Q3: Available in 2015 Q3



APC500

Wireless AP Controller



Features

- Manage up to 30 Edimax Pro APs.
- Suitable for SMB/SME environments.
- Robust AP management.
- Local or built-in RADIUS (AAA) support for user and guest accounts.
- Batch setup/configuration.
- Group firmware upgrade & restart.
- Channel/RF power/load optimization.
- Flexible WLAN Groups.
- Reliable standalone box to support SMB heavy usage.



Model	APC500
Description	Wireless AP Controller
H/W	Standalone
License	Free
Segment	Middle
WAN	Giga x1
LAN	Giga x3
Console	RJ45
Management	
Managed EdimaxPro AP #	1-30
Managed IP Device	v
Traffic Statistics	Network Traffic/CPU Loading/Memory Usage
Guest Log	v
Multiple Firmware Upgrade	v
Deployment	
L2 Auto-Discovery	v
AP Planning	v
Locate AP(Buzzer/LED)	v
WDS between APs	v
Google MAP Support	Q3
Radio Resource Management	
Client RSSI Threshold	v
Dynamic Channel Selection	v
Auto Pilot(Auto Channel/Power)	v
Security	
MAC Filtering	v
Blocking Intra-BSS Traffic	v
Rogue AP Detection	v
Wireless L2 Isolation	v
Access control	
Captive Portal (Internal & External)	v
Guest Account	v
RADIUS Authentication	v
RADIUS Accounting	v
Wireless QoS	
AP Load Balancing	Q3
WLAN Station Bandwidth Limiting (Per-SSID)	v
Diagnostic Tool	
Ping/Trace Route	v
Physical	
Primary/Secondary Controller Support	Q3
Software Function Items	
Active AP	30
AP Groups	30
WLAN SSIDs	200
WLAN Groups	30
RADIUS Accounts	1024
RADIUS Groups	30
Access Control (White-Black List)	1024
Access Control Groups	30
Guest Network SSIDs	200
Guest Network Groups	30
Guest Accounts	8

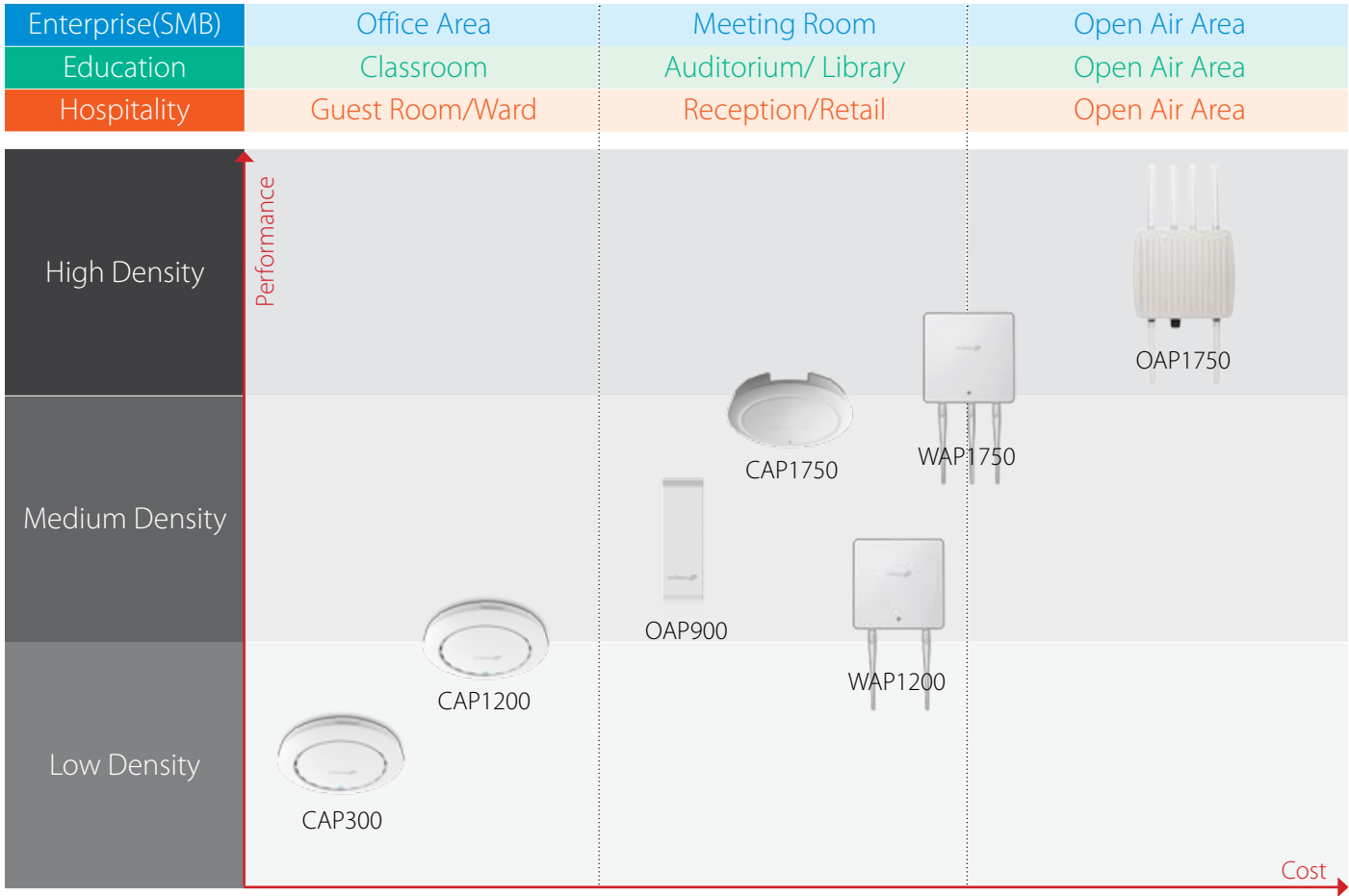
* Q3: Available in 2015 Q3

* Maximum performance, actual data rates and coverage will vary depending on network conditions and environmental factors.
* Product appearance and specifications are subject to change without notice.



The Edimax Pro series is a range of high performance, reliable and affordable Wi-Fi solutions for modern businesses. Performance, functionality and usability designed for day-to-day enterprise environments of all kinds – with leading 11ac technology, powerful security, flexible deployment and extensive management options for company MIS departments. Suited for environments where performance and security are critical for business.

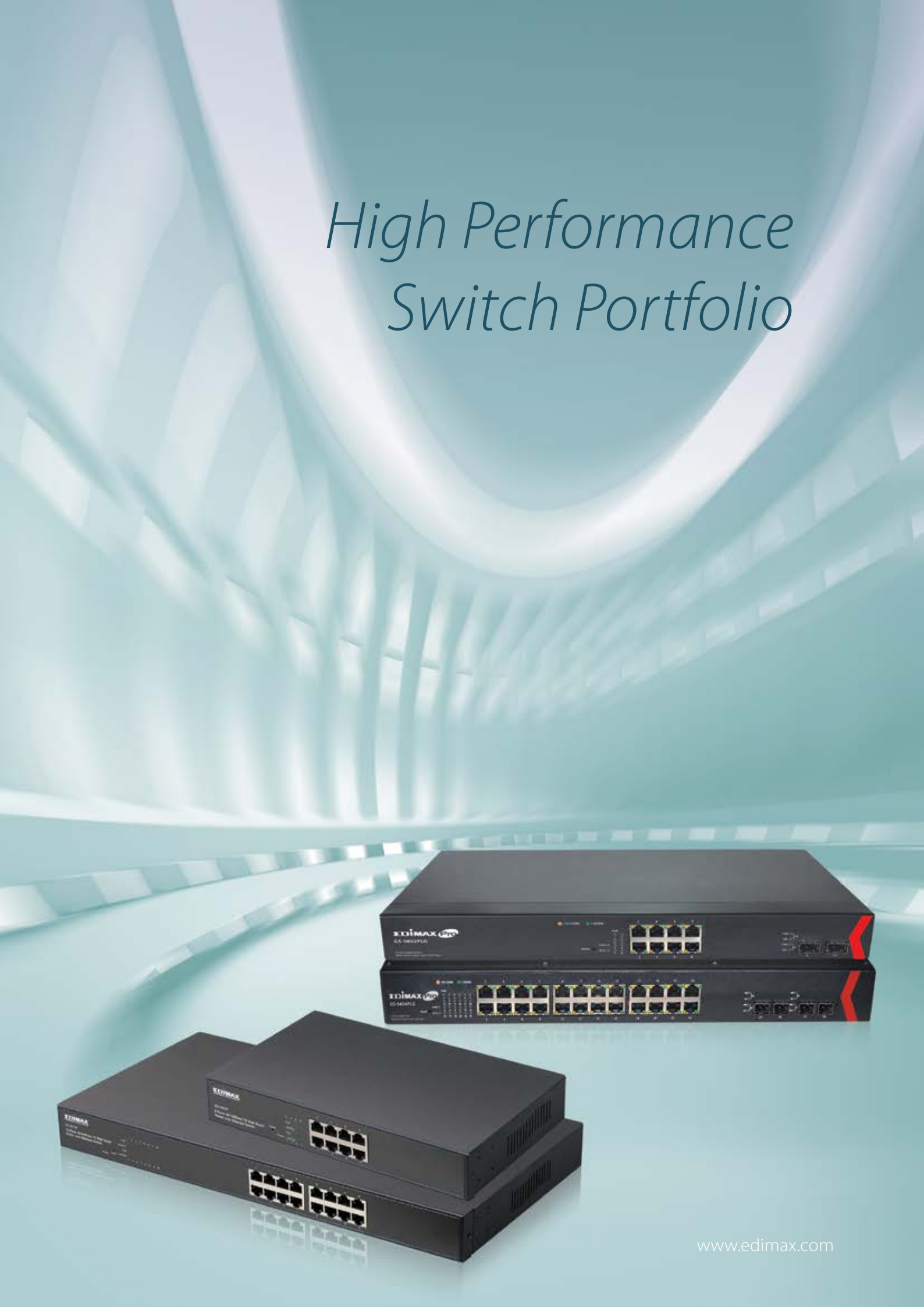
Edimax Pro Access Point Family



Product Briefing

CAP1750	CAP1200	CAP300	WAP1750	WAP1200	OAP1750	OAP900
<ul style="list-style-type: none">Segment: High3T3R, 802.11a/b/g/n/ac450+1300Mbps, Concurrent Dual-Band10/100/1000 Gigabit EthernetUp to 27.5dbm802.3at PoE SupportedUL94-5VB Flammability Rating	<ul style="list-style-type: none">Segment: Middle2T2R, 802.11a/b/g/n/ac300+867Mbps, Concurrent Dual-Band10/100/1000 Gigabit EthernetUp to 26dbm802.3af PoE SupportedUL94-5VB Flammability Rating	<ul style="list-style-type: none">Segment: Entry2T2R, 802.11b/g/n300Mbps, Single-Band 2.4GHz10/100/1000 Gigabit EthernetUp to 26dbm802.3af PoE SupportedUL94-5VB Flammability Rating	<ul style="list-style-type: none">Segment: High3T3R, 802.11a/b/g/n/ac450+1300Mbps, Concurrent Dual-Band10/100/1000 Gigabit EthernetUp to 27.5dbm802.3at PoE Supported (PoE Out 802.3af)Optional Security Cover (SC1000)	<ul style="list-style-type: none">Segment: Middle2T2R, 802.11a/b/g/n/ac300+867Mbps, Concurrent Dual-Band10/100/1000 Gigabit EthernetUp to 27.5dbm802.3at PoE SupportedOptional Security Cover (SC1000)	<ul style="list-style-type: none">Segment: Base Station3T3R, 802.11a/b/g/n/ac450+1300Mbps, Concurrent Dual-Band10/100/1000 Gigabit EthernetUp to 27.5dbm802.3at PoE SupportedIP67 Weatherproof	<ul style="list-style-type: none">Segment: CPE/AP2T2R, 802.11a/n/ac900Mbps, Single-Band 5GHz10/100/1000 Gigabit EthernetUp to 26dbm802.3af PoE SupportedIP65 Weatherproof

High Performance Switch Portfolio





GS-5424PLG

24-Port Gigabit PoE+ Web Smart Switch with 4 SFP Slots



Features

- Complies with IEEE 802.3 10Base-T, IEEE 802.3u 100Base-TX, IEEE 802.3ab 1000Base-T and IEEE 802.3z Gigabit SX/LX standards.
- Supports 24 10/100/1000Mbps Gigabit Ethernet ports.
- Supports 4 mini-GBIC/SFP slots.
- Supplies 48V DC with 30W output per port (400W total power budget) .
- Automatically detects power devices (PD) and power consumption levels.
- Supports auto fault detection (over/under current & voltage) .
- Supports IEEE 802.3az Energy Efficient.
- 8K MAC address table, automatic source address learning and ageing.
- 56 Gbps forwarding rate.

Model	GS-5424PLG
Description	24-Port Gigabit PoE+ Web Smart Switch with 4 SFP Slots
Port/Module Slots	
10/100Base-TX	-
10/100/1000Base-T	24
1000Base-SX(SFP)	4
1000Base Combo RJ-45/SFP	-
PoE Port	24
PoE Power Management	
IEEE 802.3af PoE (15.4W/P)	v
IEEE 802.3at PoE (30W/P)	v
Power Budget Management UI	v
PD Power On/Off Control	v
PD Classification	v
Overloading Protecting	v
Power Consumption without PD Connection	20W
Total Power Budget	400W
Performance	
Packet Buffer, Bytes	500K
MAC Address	8K
Jumbo Frame, Bytes	9.6K
Management	
Web-Based	v
Features	
IEEE802.1q VLAN	16
IEEE802.1d/w STP	v
IEEE802.3az Energy Efficient Ethernet Function	-
Port-Based/Tag-Based VLAN	v
Trunking Group	-
LACP	-
QoS	-
Priority Queues	-
IGMP Snooping	-
Storm Control	v
Port Mirroring	v
Fan-Less	-
Power Type	Internal Power
Physical	
Dimension(LxWxH)	441 x 310 x 44 mm
Rackmountable	v

GS-5208PLG

8-Port Gigabit PoE+ Web Smart Switch with 2 SFP Slots



Features

- Complies with IEEE 802.3 10Base-T, IEEE 802.3u 100Base-TX, IEEE 802.3ab 1000Base-T and IEEE 802.3z Gigabit SX/LX.
- Supports 8 10/100/1000Mbps Gigabit Ethernet ports.
- Supports 2 mini-GBIC/SFP slots.
- Supplies 48V DC with 30W output per port (160W total power budget).
- Automatically detects power devices (PD) and power consumption levels.
- Supports auto fault detection (over/under current & voltage) .
- Supports IEEE 802.3az Energy Efficient.
- 8K MAC address table, automatic source address learning and ageing.
- 20Gbps forwarding rate.



Model	GS-5208PLG
Description	8-Port Gigabit PoE+ Web Smart Switch with 2 SFP Slots
Port/Module Slots	
10/100Base-TX	-
10/100/1000Base-T	8
1000Base-SX(SFP)	2
1000Base Combo RJ-45/SFP	-
PoE Port	8
PoE Power Management	
IEEE 802.3af PoE (15.4W/P)	v
IEEE 802.3at PoE (30W/P)	v
Power Budget Management UI	v
PD Power On/Off Control	v
PD Classification	v
Overloading Protecting	v
Power Consumption without PD Connection	10W
Total Power Budget	160W
Performance	
Packet Buffer, Bytes	144K
MAC Address	8K
Jumbo Frame, Bytes	9.6K
Management	
Web-Based	v
Features	
IEEE802.1q VLAN	16
IEEE802.1d/w STP	v
IEEE802.3az Energy Efficient Ethernet Function	-
Port-Based/Tag-Based VLAN	v
Trunking Group	-
LACP	-
QoS	-
Priority Queues	-
IGMP Snooping	-
Storm Control	v
Port Mirroring	v
Fan-Less	-
Power Type	Internal Power
Physical	
Dimension(LxWxH)	441 x 310 x 44 mm
Rackmountable	v

* Maximum performance, actual data rates and coverage will vary depending on network conditions and environmental factors.
* Product appearance and specifications are subject to change without notice.

ES-5824PG/ ES-5824PHG

24-Port Gigabit PoE+ Web Smart Switch with 4 SFP Slots



Features

- Complies with IEEE 802.3, 802.3af/at, 802.3u, 802.3x, 802.1q, standards.
- The ES-5824PG supplies 48V DC with 30W output per port (390W total power budget).
- The ES-5824PHG supplies 48V DC with 30W output per port (195W total power budget).
- Power consumption budget UI to monitor power usage.
- Port-based remote power on/off to restart connected PoE devices individually.
- Supports IGMP snooping to optimize network performance.
- Supports 16 port-based VLAN and 16 tag-based VLAN groups.
- Supports 8 trunking groups.

Model	ES-5824PG	ES-5824PHG
Description	24-Port Gigabit PoE+ Web Smart Switch with 4 SFP Slots	
Port/Module Slots		
10/100Base-TX	-	-
10/100/1000Base-T	24	24
1000Base-SX(SFP)	4	4
1000Base Combo RJ-45/SFP	-	-
PoE Port	24	24
PoE Power Management		
IEEE 802.3af PoE (15.4W/P)	v	v
IEEE 802.3at PoE (30W/P)	v	v
Power Budget Management UI	v	v
PD Power On/Off Control	v	v
PD Classification	v	v
Overloading Protecting	v	v
Power Consumption without PD Connection	20W	20W
Total Power Budget	390W	195W
Performance		
Packet Buffer, Bytes	500K	500K
MAC Address	8K	8K
Jumbo Frame, Bytes	9.6K	9.6K
Management		
Web-Based	v	v
Features		
IEEE802.1q VLAN	16	16
IEEE802.1d/w STP	v	v
IEEE802.3az Energy Efficient Ethernet Function	-	-
Port-Based/Tag-Based VLAN	v	v
Trunking Group	8	8
LACP	v	v
QoS	v	v
Priority Queues	4	4
IGMP Snooping	v	v
Storm Control	v	v
Port Mirroring	v	v
Fan-Less	-	-
Power Type	Internal Power	Internal Power
Physical		
Dimension(LxWxH)	440 x 330 x 44 mm	440 x 330 x 44 mm
Rackmountable	v	v

ES-5816PHG

16-Port Gigabit PoE+ Web Smart Switch with 4 Combo SFP Slots



Features

- Complies with IEEE 802.3, 802.3af/at, 802.3u, 802.3x, 802.3ap, 802.1q standards.
- Supplies 48V DC with 30W output per port (130W total power budget).
- Power consumption budget UI to monitor power usage.
- Port-based remote power on/off to restart connected PoE devices individually.
- Supports IGMP snooping to optimize network performance.
- Supports 16 port-based VLAN and 16 tag-based VLAN groups.
- Supports 8 trunking groups.

Model	ES-5816PHG
Description	16-Port Gigabit PoE+ Web Smart Switch with 4 Combo SFP Slots
Port/Module Slots	
10/100Base-TX	-
10/100/1000Base-T	16
1000Base-SX(SFP)	-
1000Base Combo RJ-45/SFP	4
PoE Port	16
PoE Power Management	
IEEE 802.3af PoE (15.4W/P)	v
IEEE 802.3at PoE (30W/P)	v
Power Budget Management UI	v
PD Power On/Off Control	v
PD Classification	v
Overloading Protecting	v
Power Consumption without PD Connection	18W
Total Power Budget	130W
Performance	
Packet Buffer, Bytes	500K
MAC Address	8K
Jumbo Frame, Bytes	9.6K
Management	
Web-Based	v
Features	
IEEE802.1q VLAN	16
IEEE802.1d/w STP	v
IEEE802.3az Energy Efficient Ethernet Function	-
Port-Based/Tag-Based VLAN	v
Trunking Group	8
LACP	v
QoS	v
Priority Queues	4
IGMP Snooping	v
Storm Control	v
Port Mirroring	v
Fan-Less	-
Power Type	Internal Power
Physical	
Dimension(LxWxH)	440 x 330 x 44 mm
Rackmountable	v

* Maximum performance, actual data rates and coverage will vary depending on network conditions and environmental factors.
* Product appearance and specifications are subject to change without notice.

ES-5808PHG

8-Port Gigabit PoE+ Web Smart Switch with 2 SFP Slots



Features

- Complies with IEEE 802.3, 802.3af/at , 802.3u, 802.3x, 802.1q standards.
- Supplies 48V DC with 30W output per port (65W total power budget).
- Power consumption budget UI to monitor power usage.
- Port-based remote power on/off to restart connected PoE devices individually.
- Supports IGMP snooping to optimize network performance.
- Supports 8 port-based VLAN and 16 tag-based VLAN groups.
- Supports 4 trunking groups.

Model	ES-5808PHG
Description	8-Port Gigabit PoE+ Web Smart Switch with 2 SFP Slots
Port/Module Slots	
10/100Base-TX	-
10/100/1000Base-T	8
1000Base-SX(SFP)	2
1000Base Combo RJ-45/SFP	-
PoE Port	8
PoE Power Management	
IEEE 802.3af PoE (15.4W/P)	v
IEEE 802.3at PoE (30W/P)	v
Power Budget Management UI	v
PD Power On/Off Control	v
PD Classification	v
Overloading Protecting	v
Power Consumption without PD Connection	10W
Total Power Budget	65W
Performance	
Packet Buffer, Bytes	144K
MAC Address	8K
Jumbo Frame, Bytes	9.6K
Management	
Web-Based	v
Features	
IEEE802.1q VLAN	16
IEEE802.1d/w STP	v
IEEE802.3az Energy Efficient Ethernet Function	-
Port-Based/Tag-Based VLAN	v
Trunking Group	4
LACP	v
QoS	v
Priority Queues	4
IGMP Snooping	v
Storm Control	v
Port Mirroring	v
Fan-Less	-
Power Type	Internal Power
Physical	
Dimension(LxWxH)	440 x 220 x 44 mm
Rackmountable	v

ES-5824P

24-Port Fast Ethernet PoE+ Web Smart Switch with 2 Gigabit Combo Ports

ES-5824PH

24-Port Fast Ethernet PoE Web Smart Switch with 2 Gigabit Combo Ports



Features

- Complies with IEEE 802.3, 802.3af, 802.3u, 802.3ab, 802.3z, 802.3x, 802.1p, 802.1q standards.
- The ES-5824P supplies 48V DC with 30W output per port (390W total power budget).
- The ES-5824PH supplies 48V DC with 15.4W output per port (195W total power budget).
- Power consumption budget UI to monitor power usage.
- Supports store-and-forward architecture.
- Port-based remote power on/off to restart connected PoE devices individually.
- Supports IGMP snooping to optimize network performance.
- Supports 26 port-based VLAN and 32 tag-based VLAN groups.
- Supports 2 trunking groups (4 ports per group and up to 2 groups for each device).

Model	ES-5824P	ES-5824PH
Description	24-Port Fast Ethernet PoE+ Web Smart Switch with 2 Gigabit Combo Ports	24-Port Fast Ethernet PoE Web Smart Switch with 2 Gigabit Combo Ports
Port/Module Slots		
10/100Base-TX	24	24
10/100/1000Base-T	-	-
1000Base-SX(SFP)	-	-
1000Base Combo RJ-45/SFP	2	2
PoE Port	24	24
PoE Power Management		
IEEE 802.3af PoE (15.4W/P)	v	v
IEEE 802.3at PoE (30W/P)	v	-
Power Budget Management UI	v	v
PD Power On/Off Control	v	v
PD Classification	v	v
Overloading Protecting	v	v
Power Consumption without PD Connection	14W	14W
Total Power Budget	390W	195W
Performance		
Packet Buffer, Bytes	343K	343K
MAC Address	4K	4K
Jumbo Frame, Bytes	-	-
Management		
Web-Based	v	v
Features		
IEEE802.1q VLAN	32	32
IEEE802.1d/w STP	v	v
IEEE802.3az Energy Efficient Ethernet Function	-	-
Port-Based/Tag-Based VLAN	v	v
Trunking Group	2	2
LACP	v	v
QoS	v	v
Priority Queues	2	2
IGMP Snooping	v	v
Storm Control	v	v
Port Mirroring	v	v
Fan-Less	-	-
Power Type	Internal Power	Internal Power
Physical		
Dimension(LxWxH)	440 x 332 x 42 mm	440 x 332 x 42 mm
Rackmountable	v	v

* Maximum performance, actual data rates and coverage will vary depending on network conditions and environmental factors.
* Product appearance and specifications are subject to change without notice.

ES-5816P

16-Port Fast Ethernet PoE Web Smart Switch



Features

- Complies with IEEE 802.3, 802.3af, 802.3u, 802.3x, 802.1p, and 802.1q standards.
- Supplies 48V DC with 15.4W output per port (260W total power budget).
- Supports store-and-forward architecture.
- Port-based remote power on/off to restart connected PoE devices individually.
- Supports auto-MDI/MDIX and auto-negotiation.
- Supports IGMP snooping to optimize network performance.
- Supports 16 port-based VLAN and 20 tag-based VLAN groups.
- Supports 2 trunking groups (4 ports per group and up to 2 groups for each device).

Model ES-5816P	
Description	16-Port Fast Ethernet PoE Web Smart Switch
Port/Module Slots	
10/100Base-TX	16
10/100/1000Base-T	-
1000Base-SX(SFP)	-
1000Base Combo RJ-45/SFP	-
PoE Port	16
PoE Power Management	
IEEE 802.3af PoE (15.4W/P)	v
IEEE 802.3at PoE (30W/P)	-
Power Budget Management UI	v
PD Power On/Off Control	v
PD Classification	v
Overloading Protecting	v
Power Consumption without PD Connection	9W
Total Power Budget	260W
Performance	
Packet Buffer, Bytes	192K
MAC Address	4K
Jumbo Frame, Bytes	-
Management	
Web-Based	v
Features	
IEEE802.1q VLAN	16
IEEE802.1d/w STP	v
IEEE802.3az Energy Efficient Ethernet Function	-
Port-Based/Tag-Based VLAN	v
Trunking Group	2
LACP	v
QoS	v
Priority Queues	4
IGMP Snooping	v
Storm Control	v
Port Mirroring	v
Fan-Less	-
Power Type	Internal Power
Physical	
Dimension(LxWxH)	440 x 220 x 42 mm
Rackmountable	v

ES-3208PHE

8-Port Fast Ethernet PoE+ Lite Smart Switch with 2 Gigabit Combo Ports



Features

- Complies with IEEE 802.3, 802.3u, 802.3ab, 802.3x and 802.3at/af standards.
- Supplies 48VDC with 30W output per port (90W PoE power budget).
- Supports PoE port current consumed power consumption.
- Supports IGMP snooping.
- Supports loop detection.
- Supports 3 trunking groups (2 ~ 4 port per trunk).
- Supports PoE power budget LED indicators.
- Fanless design.

Model ES-3208PHE	
Description	8-Port Fast Ethernet PoE+ Lite Smart Switch with 2 Gigabit Combo Ports
Port/Module Slots	
10/100Base-TX	8
10/100/1000Base-T	-
1000Base-SX(SFP)	-
1000Base Combo RJ-45/SFP	2
PoE Port	8
PoE Power Management	
IEEE 802.3af PoE (15.4W/P)	v
IEEE 802.3at PoE (30W/P)	v
Power Budget Management UI	v
PD Power On/Off Control	v
PD Classification	v
Overloading Protecting	v
Power Consumption without PD Connection	14.2W
PoE Power Budget	90W
Performance	
Packet Buffer, Bytes	352K
MAC Address	4K
Jumbo Frame, Bytes	-
Management	
Web-Based	v
Features	
IEEE802.1q VLAN	10
IEEE802.1d/w STP	v
IEEE802.3az Energy Efficient Ethernet Function	-
Port-Based/Tag-Based VLAN	v
Trunking Group	3
LACP	v
QoS	v
Priority Queues	2
IGMP Snooping	v
Storm Control	v
Port Mirroring	v
Fan-Less	v
Power Type	External Power
Physical	
Dimension(LxWxH)	210 x 160 x 44 mm
Rackmountable	v

* Maximum performance, actual data rates and coverage will vary depending on network conditions and environmental factors.
* Product appearance and specifications are subject to change without notice.

ES-5808P

8-Port Fast Ethernet PoE Web Smart Switch



Features

- Complies with IEEE 802.3, 802.3af, 802.3u, 802.3x, 802.1p, and 802.1q standards.
- Supplies 48V DC with 15.4W output per port (130W total power budget).
- Supports store-and-forward architecture.
- Port-based remote power on/off to restart connected PoE devices individually.
- Supports auto-MDI/MDIX and auto-negotiation.
- Supports 8 port-based VLAN and password-protected configuration.

Model	ES-5808P
Description	8-Port Fast Ethernet PoE Web Smart Switch
Port/Module Slots	
10/100Base-TX	8
10/100/1000Base-T	-
1000Base-SX(SFP)	-
1000Base Combo RJ-45/SFP	-
PoE Port	8
PoE Power Management	
IEEE 802.3af PoE (15.4W/P)	v
IEEE 802.3at PoE (30W/P)	-
Power Budget Management UI	v
PD Power On/Off Control	v
PD Classification	v
Overloading Protecting	v
Power Consumption without PD Connection	6W
Total Power Budget	130W
Performance	
Packet Buffer, Bytes	64K
MAC Address	4K
Jumbo Frame, Bytes	-
Management	
Web-Based	v
Features	
IEEE802.1q VLAN	16
IEEE802.1d/w STP	v
IEEE802.3az Energy Efficient Ethernet Function	-
Port-Based/Tag-Based VLAN	v
Trunking Group	2
LACP	v
QoS	v
Priority Queues	4
IGMP Snooping	v
Storm Control	v
Port Mirroring	v
Fan-Less	-
Power Type	Internal Power
Physical	
Dimension(LxWxH)	266 x 160 x 42 mm
Rackmountable	-

ES-3204PHE

4-Port Fast Ethernet PoE+ Lite Smart Switch with 2 Gigabit Ports



Features

- Complies with IEEE 802.3, 802.3u, 802.3ab, 802.3x and 802.3at/af standards.
- Supplies 48VDC with 30W output per port (80W PoE power budget).
- Supports PoE port current consumed power consumption.
- Supports IGMP snooping.
- Supports loop detection.
- Supports 2 trunking groups (2 ~ 4 port per trunk).
- Supports PoE power budget LED indicators.
- Fanless design.

Model	ES-3204PHE
Description	4-Port Fast Ethernet PoE+ Lite Smart Switch with 2 Gigabit Ports
Port/Module Slots	
10/100Base-TX	4
10/100/1000Base-T	2
1000Base-SX(SFP)	-
1000Base Combo RJ-45/SFP	-
PoE Port	4
PoE Power Management	
IEEE 802.3af PoE (15.4W/P)	v
IEEE 802.3at PoE (30W/P)	v
Power Budget Management UI	v
PD Power On/Off Control	v
PD Classification	v
Overloading Protecting	v
Power Consumption without PD Connection	13.4W
PoE Power Budget	80W
Performance	
Packet Buffer, Bytes	352K
MAC Address	4K
Jumbo Frame, Bytes	-
Management	
Web-Based	v
Features	
IEEE802.1q VLAN	6
IEEE802.1d/w STP	v
IEEE802.3az Energy Efficient Ethernet Function	-
Port-Based/Tag-Based VLAN	v
Trunking Group	2
LACP	v
QoS	v
Priority Queues	2
IGMP Snooping	v
Storm Control	v
Port Mirroring	v
Fan-Less	v
Power Type	External Power
Physical	
Dimension(LxWxH)	180 x 145 x 34 mm
Rackmountable	v

* Maximum performance, actual data rates and coverage will vary depending on network conditions and environmental factors.
* Product appearance and specifications are subject to change without notice.

GS-1008P V2

8-Port Gigabit Ethernet PoE+ Switch



Features

- Complies with IEEE 802.3, 802.3u, 802.3ab, 802.3az, 802.3x and 802.3at/af standards.
- Supplies 48VDC with 30W output per port (130W total power budget).
- Supports auto fault detection (over current).
- Supports PoE power budget LED indicators.
- Fanless design.

Model	GS-1008P V2
Description	8-Port Gigabit Ethernet PoE+ Switch
Port/Module Slots	
10/100Base-TX	-
10/100/1000Base-T	8
1000Base-SX(SFP)	-
1000Base Combo RJ-45/SFP	-
PoE Port	8
PoE Power Management	
IEEE 802.3af PoE (15.4W/P)	v
IEEE 802.3at PoE (30W/P)	v
Power Budget Management UI	-
PD Power On/Off Control	-
PD Classification	v
Overloading Protecting	v
Power Consumption without PD Connection	6W
PoE Power Budget	130W
Performance	
Packet Buffer, Bytes	256K
MAC Address	8K
Jumbo Frame, Bytes	9K
Management	
Web-Based	-
Features	
IEEE802.1q VLAN	-
IEEE802.1d/w STP	-
IEEE802.3az Energy Efficient Ethernet Function	v
Port-Based/Tag-Based VLAN	-
Trunking Group	-
LACP	-
QoS	-
Priority Queues	-
IGMP Snooping	-
Storm Control	-
Port Mirroring	-
Fan-Less	v
Power Type	Internal Power
Physical	
Dimension(LxWxH)	180 x 230 x 44 mm
Rackmountable	v

GS-1008P/PL

8-Port Gigabit PoE+ Switch

GS-1008PH

8-Port Gigabit Switch with 4 PoE+ Ports



Features

- Complies with IEEE 802.3, 802.3u, 802.3x, 802.3af and 802.3at standards.
- Supplies 48V DC with 30W output per port (80W total power budget).
- Auto detects power devices (PD) and power consumption levels.
- Supports auto fault detection (over/under current & voltage).
- Supports IEEE 802.3az Energy Efficient Ethernet.
- Fanless design without noise.

Model	GS-1008P	GS-1008PL	GS-1008PH
Description	8-Port Gigabit PoE+ Switch	8-Port Gigabit PoE+ Switch	8-Port Gigabit Switch with 4 PoE+ Ports
Port/Module Slots			
10/100Base-TX	-	-	-
10/100/1000Base-T	8	8	8
1000Base-SX(SFP)	-	-	-
1000Base Combo RJ-45/SFP	-	-	-
PoE Port	8	8	4
PoE Power Management			
IEEE 802.3af PoE (15.4W/P)	v	v	v
IEEE 802.3at PoE (30W/P)	v	v	v
Power Budget Management UI	-	-	-
PD Power On/Off Control	-	-	-
PD Classification	v	v	v
Overloading Protecting	v	v	v
Power Consumption without PD Connection	5W	5W	5W
Total Power Budget	150W	80W	80W
Performance			
Packet Buffer, Bytes	128K	128K	128K
MAC Address	8K	8K	8K
Jumbo Frame, Bytes	9K	9K	9K
Management			
Web-Based	-	-	-
Features			
IEEE802.1q VLAN	-	-	-
IEEE802.1d/w STP	-	-	-
IEEE802.3az Energy Efficient Ethernet Function	v	v	v
Port-Based/Tag-Based VLAN	-	-	-
Trunking Group	-	-	-
LACP	-	-	-
QoS	-	-	-
Priority Queues	-	-	-
IGMP Snooping	-	-	-
Storm Control	-	-	-
Port Mirroring	-	-	-
Fan-Less	v	v	v
Power Type	Internal Power	Internal Power	Internal Power
Physical			
Dimension(LxWxH)	270 x 185 x 44 mm	270 x 185 x 44 mm	270 x 185 x 44 mm
Rackmountable	v	v	v

GS-1008PHE

8-Port Gigabit Switch with 4 PoE Ports



Features

- Complies with IEEE 802.3, 802.3u, 802.3x and 802.3af standards.
- Supplies 48V DC with 30W output per port (80W total power budget).
- Auto detects power devices (PD) and power consumption levels.
- Supports auto fault detection (over/under current & voltage).
- Supports IEEE 802.3az Energy Efficient Ethernet.
- Fanless design.

Model	GS-1008PHE
Description	8-Port Gigabit Switch with 4 PoE Ports
Port/Module Slots	
10/100Base-TX	-
10/100/1000Base-T	8
1000Base-SX(SFP)	-
1000Base Combo RJ-45/SFP	-
PoE Port	4
PoE Power Management	
IEEE 802.3af PoE (15.4W/P)	v
IEEE 802.3at PoE (30W/P)	-
Power Budget Management UI	-
PD Power On/Off Control	-
PD Classification	v
Overloading Protecting	v
Power Consumption without PD Connection	5W
Total Power Budget	48W
Performance	
Packet Buffer, Bytes	128K
MAC Address	1K
Jumbo Frame, Bytes	9K
Management	
Web-Based	-
Features	
IEEE802.1q VLAN	-
IEEE802.1d/w STP	-
IEEE802.3az Energy Efficient Ethernet Function	v
Port-Based/Tag-Based VLAN	-
Trunking Group	-
LACP	-
QoS	-
Priority Queues	-
IGMP Snooping	-
Storm Control	-
Port Mirroring	-
Fan-Less	v
Power Type	External Power
Physical	
Dimension(LxWxH)	165 x 118 x 38 mm
Rackmountable	v

GS-1005P

5-Port Gigabit Ethernet Switch with 4 PoE+ Ports



Coming Soon

Features

- Complies with IEEE 802.3, 802.3u, 802.3ab, 802.3az. 802.3x and 802.3at/af standards.
- Supplies 48VDC with 30W output per port (80W total power budget).
- Supports auto fault detection (over current).
- Supports PoE power budget LED indicators.
- Fanless design.

Model	GS-1005P
Description	5-Port Gigabit Ethernet Switch with 4 PoE+ Ports
Port/Module Slots	
10/100Base-TX	-
10/100/1000Base-T	5
1000Base-SX(SFP)	-
1000Base Combo RJ-45/SFP	-
PoE Port	4
PoE Power Management	
IEEE 802.3af PoE (15.4W/P)	v
IEEE 802.3at PoE (30W/P)	v
Power Budget Management UI	-
PD Power On/Off Control	-
PD Classification	v
Overloading Protecting	v
Power Consumption without PD Connection	5.14W
PoE Power Budget	80W
Performance	
Packet Buffer, Bytes	256K
MAC Address	2K
Jumbo Frame, Bytes	9K
Management	
Web-Based	-
Features	
IEEE802.1q VLAN	-
IEEE802.1d/w STP	-
IEEE802.3az Energy Efficient Ethernet Function	v
Port-Based/Tag-Based VLAN	-
Trunking Group	-
LACP	-
QoS	-
Priority Queues	-
IGMP Snooping	-
Storm Control	-
Port Mirroring	-
Fan-Less	v
Power Type	Internal Power
Physical	
Dimension(LxWxH)	180 x 230 x 44 mm
Rackmountable	v

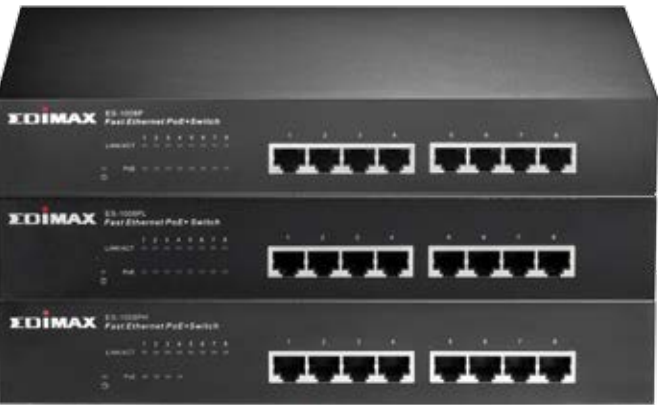
* Maximum performance, actual data rates and coverage will vary depending on network conditions and environmental factors.
* Product appearance and specifications are subject to change without notice.

ES-1008P/ PL

8-Port Fast Ethernet PoE+ Switch

ES-1008PH

8-Port Fast Ethernet Switch with 4 PoE+ Ports



Features

- Complies with IEEE 802.3, 802.3u, 802.3x, 802.3af and 802.3at standards.
- Supplies 48V DC with 30W output per port (80W total power budget).
- Auto detects power devices (PD) and power consumption levels.
- Supports auto fault detection (over/under current & voltage).
- Supports IEEE 802.3az Energy Efficient Ethernet.
- Fanless design.

Model	ES-1008P	ES-1008PL	ES-1008PH
Description	8-Port Fast Ethernet PoE+ Switch	8-Port Fast Ethernet PoE+ Switch	8-Port Fast Ethernet Switch with 4 PoE+ Ports
Port/Module Slots			
10/100Base-TX	8	8	8
10/100/1000Base-T	-	-	-
1000Base-SX(SFP)	-	-	-
1000Base Combo RJ-45/SFP	-	-	-
PoE Port	8	8	4
PoE Power Management			
IEEE 802.3af PoE (15.4W/P)	v	v	v
IEEE 802.3at PoE (30W/P)	v	v	v
Power Budget Management UI	-	-	-
PD Power On/Off Control	-	-	-
PD Classification	v	v	v
Overloading Protecting	v	v	v
Power Consumption without PD Connection	5W	5W	5W
Total Power Budget	150W	80W	80W
Performance			
Packet Buffer, Bytes	96K	96K	96K
MAC Address	1K	1K	1K
Jumbo Frame, Bytes	-	-	-
Management			
Web-Based	-	-	-
Features			
IEEE802.1q VLAN	-	-	-
IEEE802.1d/w STP	-	-	-
IEEE802.3az Energy Efficient Ethernet Function	v	v	v
Port-Based/Tag-Based VLAN	-	-	-
Trunking Group	-	-	-
LACP	-	-	-
QoS	-	-	-
Priority Queues	-	-	-
IGMP Snooping	-	-	-
Storm Control	-	-	-
Port Mirroring	-	-	-
Fan-Less	v	v	v
Power Type	Internal Power	Internal Power	Internal Power
Physical			
Dimension(LxWxH)	270 x 185 x 44 mm	270 x 185 x 44 mm	270 x 185 x 44 mm
Rackmountable	v	v	v

ES-1008PHE

8-Port Fast Ethernet Switch with 4 PoE Ports



Features

- Complies with IEEE 802.3, 802.3u, 802.3x and 802.3af standards.
- Supplies 48V DC with 30W output per port (80W total power budget).
- Auto detects power devices (PD) and power consumption levels.
- Supports auto fault detection (over/under current & voltage).
- Supports IEEE 802.3az Energy Efficient Ethernet.
- Fanless design.

Model	ES-1008PHE
Description	8-Port Fast Ethernet Switch with 4 PoE Ports
Port/Module Slots	
10/100Base-TX	8
10/100/1000Base-T	-
1000Base-SX(SFP)	-
1000Base Combo RJ-45/SFP	-
PoE Port	4
PoE Power Management	
IEEE 802.3af PoE (15.4W/P)	v
IEEE 802.3at PoE (30W/P)	-
Power Budget Management UI	-
PD Power On/Off Control	-
PD Classification	v
Overloading Protecting	v
Power Consumption without PD Connection	5W
Total Power Budget	48W
Performance	
Packet Buffer, Bytes	56K
MAC Address	1K
Jumbo Frame, Bytes	-
Management	
Web-Based	-
Features	
IEEE802.1q VLAN	-
IEEE802.1d/w STP	-
IEEE802.3az Energy Efficient Ethernet Function	v
Port-Based/Tag-Based VLAN	-
Trunking Group	-
LACP	-
QoS	-
Priority Queues	-
IGMP Snooping	-
Storm Control	-
Port Mirroring	-
Fan-Less	v
Power Type	External Power
Physical	
Dimension(LxWxH)	146 x 84 x 42 mm
Rackmountable	v

ES-5804PH

5-Port Fast Ethernet Switch with 4 PoE+ Ports



Features

- Complies with IEEE 802.3u, 802.3x, 802.3af and 802.3at standards.
- Supplies 48V DC with 30W output per port (40W total power budget).
- Auto detects power devices (PD) and power consumption levels.
- Supports auto fault detection (over/under current & voltage).
- Supports thermal shutdown protection (Tj > 150°C).

ModelES-5804PH	
Description	5-Port Fast Ethernet Switch with 4 PoE+ Ports
Port/Module Slots	
10/100Base-TX	5
10/100/1000Base-T	-
1000Base-SX(SFP)	-
1000Base Combo RJ-45/SFP	-
PoE Port	4
PoE Power Management	
IEEE 802.3af PoE (15.4W/P)	v
IEEE 802.3at PoE (30W/P)	v
Power Budget Management UI	-
PD Power On/Off Control	-
PD Classification	v
Overloading Protecting	v
Power Consumption without PD Connection	3W
Total Power Budget	40W
Performance	
Packet Buffer, Bytes	64K
MAC Address	1K
Jumbo Frame, Bytes	-
Management	
Web-Based	-
Features	
IEEE802.1q VLAN	-
IEEE802.1d/w STP	-
IEEE802.3az Energy Efficient Ethernet Function	-
Port-Based/Tag-Based VLAN	-
Trunking Group	-
LACP	-
QoS	-
Priority Queues	-
IGMP Snooping	-
Storm Control	-
Port Mirroring	-
Fan-Less	v
Power Type	External Power
Physical	
Dimension(LxWxH)	130 x 97 x 24 mm
Rackmountable	-

ES-5226RS+

24-Port Fast Ethernet Web Smart Switch with 2 Gigabit Combo Ports



Features

- Complies with IEEE 802.3, IEEE 802.3u, IEEE 802.3ab and IEEE 802.3z standards.
- 24 Fast Ethernet RJ-45 ports and 2 Gigabit SFP slots.
- Supports IEEE 802.3x flow control.
- Supports port-based priority and IEEE 802.1p priority tags.
- Supports port-based VLAN and IEEE 802.1q tage-based VLAN.
- Supports auto-MDI/MDIX and auto-negotiation.
- 8.8Gbps high-speed switching fabric.
- Supports store-and-forward architecture and wire-speed forwarding.
- RAUSE frames for full duplex mode and back pressure for half duplex mode.

ModelES-5226RS+	
Description	24-Port Fast Ethernet Web Smart Switch with 2 Gigabit Combo Ports
Port/Module Slots	
10/100BASE-TX	24
10/100/1000Base-T	-
1000Base-SX(SFP)	-
1000BASE-T/SX Combo	2
Performance	
Packet Buffer (Bytes)	512K
MAC Address	4K
Jumbo Frame (Bytes)	-
Features	
IEEE 802.1q VLAN	v
IEEE 802.1D STP	-
IEEE 802.1w RSTP	-
Port-Based VLAN	v
Tag-Based VLAN	32
Trunking Group	3
LACP	v
QoS	v
Priority Queues	2
IGMP Snooping	-
Storm Control	v
Port Mirroring	v
Management	
SNMP	-
RS-232 CLI	-
Web-Based	v
Physical	
Dimension(LxWxH)	440 x 220 x 44 mm
Rackmountable	v

• Maximum performance, actual data rates and coverage will vary depending on network conditions and environmental factors.
• Product appearance and specifications are subject to change without notice.

ES-5240G+ V3 / ES-5160G+ V3

24/16-Port Gigabit Web Smart Switch with 4 SFP Slots



Features

- Complies with IEEE 802.3, IEEE 802.3u, IEEE 802.3ab and IEEE 802.3z standards.
- Supports IEEE 802.3x flow control.
- Supports IEEE 802.1q Q-in-Q tag-based VLAN.
- Supports IEEE 802.1p QoS with 4 priority queues.
- Supports port mirroring.
- Supports per-port shaping, policing and broadcast storm control.
- Supports jumbo frames up to 9.6K.
- Supports 802.1x network access security.
- Supports web-based management.

Model	ES-5240G+ V3	ES-5160G+ V3
Description	24-Port Gigabit Web Smart Switch with 4 SFP Slots	16 -Port Gigabit Web Smart Switch with 4 SFP Slots
Port/Module Slots		
10/100BASE-TX	-	-
10/100/1000Base-T	24	16
1000Base-SX(SFP)	-	-
1000BASE-T/SX Combo	4	4
Performance		
Packet Buffer (Bytes)	340K	340K
MAC Address	8K	8K
Jumbo Frame (Bytes)	9.6K	9.6K
Features		
IEEE 802.1q VLAN	v	v
IEEE 802.1D STP	v	v
IEEE 802.1w RSTP	v	v
Port-Based VLAN	v	v
Tag-Based VLAN	16	16
Trunking Group	8	8
LACP	v	v
QoS	v	v
Priority Queues	4	4
IGMP Snooping	v	v
Storm Control	v	v
Port Mirroring	v	v
Management		
SNMP	V1/V2C	V1/V2C
RS-232 CLI	-	-
Web-Based	v	v
Physical		
Dimension(LxWxH)	440 x 220 x 44 mm	440 x 220 x 44 mm
Rackmountable	v	v

GS-1016

16-Port Gigabit Rack-Mount Switch



Features

- Complies with IEEE 802.3, IEEE 802.3u and IEEE 802.3ab standards.
- 16 Gigabit Ethernet RJ-45 ports.
- Supports auto-MDI/MDIX crossover detection and auto-correction.
- Supports 10/100Mbps full/half duplex modes and 1000Mbps full duplex mode.
- Wire-speed package filtering and forwarding rates.
- Supports store-and-forward architecture with fragment and CRC error package filtering.
- Supports IEEE 802.3az Energy Efficient Ethernet.

Model	GS-1016
Description	16-Port Gigabit Rack-Mount Switch
Port/Module Slots	
10/100BASE-TX	-
10/100/1000BASE-T	16
1000BASE-SX (SFP)	-
Standards	
IEEE 802.3 10BASE-T	v
IEEE 802.3u 100BASE-TX	v
IEEE 802.3ab 1000BASE-T	v
IEEE 802.3z 1000BASE-X	-
IEEE 802.3x Flow Control	v
IEEE 802.3az Energy Efficient Ethernet	v
Performance	
Packet Buffer (Bytes)	256K
MAC Address	8K
Auto-MDI/MDIX	v
Jumbo Frame (Bytes)	9K
Power Requirements	
Input Voltage	100-240V AC, 50-60Hz
Max. Power Consumption	6.21W
Hardware Features	
Fanless	v
Physical	
Dimension(LxWxH)	441 x 131 x 44 mm
Rackmountable	v

• Maximum performance, actual data rates and coverage will vary depending on network conditions and environmental factors.
• Product appearance and specifications are subject to change without notice.

ES-1024

24-Port Fast Ethernet Rack-Mount Switch



ES-1016

16-Port Fast Ethernet Rack-Mount Switch

Features

- Complies with IEEE 802.3 and IEEE 802.3u standards.
- Supports auto-MDI/MDIX crossover detection and auto-correction.
- Supports 10/100Mbps full/half duplex modes.
- Wire-speed package filtering and forwarding rates.
- Supports store-and-forward architecture with fragment and CRC error package filtering.
- Supports IEEE 802.3az Energy Efficient Ethernet.

Model	ES-1024	ES-1016
Description	24-Port Fast Ethernet Rack-Mount Switch	16-Port Fast Ethernet Rack-Mount Switch
Port/Module Slots		
10/100BASE-TX	24	16
10/100/1000BASE-T	-	-
1000BASE-SX (SFP)	-	-
Standards		
IEEE 802.3 10BASE-T	v	v
IEEE 802.3u 100BASE-TX	v	v
IEEE 802.3ab 1000BASE-T	-	-
IEEE 802.3z 1000BASE-X	-	-
IEEE 802.3x Flow Control	v	v
IEEE 802.3az Energy Efficient Ethernet	v	v
Performance		
Packet Buffer (Bytes)	256K	256K
MAC Address	8K	8K
Auto-MDI/MDIX	v	v
Jumbo Frame (Bytes)	-	-
Power Requirements		
Input Voltage	100-240V AC, 50-60Hz	100-240V AC, 50-60Hz
Max. Power Consumption	4W	3W
Hardware Features		
Fanless	v	v
Physical		
Dimension(LxWxH)	441 x 131 x 44 mm	441 x 131 x 44 mm
Rackmountable	v	v

ES-5800M V2

8-Port Gigabit Desktop Media Switch



ES-5500M V2

5-Port Gigabit Desktop Media Switch



Features

- Connects smart TVs, Blu-ray players, game consoles, and media players to the network.
- Optimized performance for 1080p video, streaming audio, gaming, and VoIP applications.
- Supports port-based QoS for high, medium, and low priority connections.
- Supports IGMP snooping v1/v2.
- Supports jumbo frames up to 9K bytes.
- Supports IEEE 802.3az Energy Efficient Ethernet.
- Built-in full range 100-240V internal power supply.

Model	ES-5800M V2	ES-5500M V2
Description	8-Port Gigabit Desktop Media Switch	5-Port Gigabit Desktop Media Switch
Port/Module Slots		
10/100BASE-TX	-	-
10/100/1000BASE-T	8	5
1000BASE-SX (SFP)	-	-
Standards		
IEEE 802.3 10BASE-T	v	v
IEEE 802.3u 100BASE-TX	v	v
IEEE 802.3ab 1000BASE-T	v	v
IEEE 802.3z 1000BASE-X	-	-
IEEE 802.3x Flow Control	v	v
IEEE 802.3az Energy Efficient Ethernet	v	v
Performance		
Packet Buffer (Bytes)	128K	128K
MAC Address	8K	2K
Auto-MDI/MDIX	v	v
Jumbo Frame (Bytes)	9K	9K
Power Requirements		
Input Voltage	100-240V AC, 50-60Hz	100-240V AC, 50-60Hz
Max. Power Consumption	3W	3W
Hardware Features		
Fanless	v	v
Physical		
Dimension(LxWxH)	193 x 84 x 26 mm	149 x 84 x 26 mm
Rackmountable	-	-

* Maximum performance, actual data rates and coverage will vary depending on network conditions and environmental factors.
* Product appearance and specifications are subject to change without notice.

PoE Web Smart Switches - Comparison Table



Model	GS-5424PLG	GS-5208PLG	ES-5824PG/ ES-5824PHG	ES-5816PHG	ES-5808PHG
Description	24-Port Gigabit PoE+ Web Smart Switch with 4 SFP Slots	8-Port Gigabit PoE+ Web Smart Switch with 2 SFP Slots	24-Port Gigabit PoE+ Web Smart Switch with 4 SFP Slots	16-Port Gigabit PoE+ Web Smart Switch with 4 Combo SFP Slots	8-Port Gigabit PoE+ Web Smart Switch with 2 SFP Slots
Port/Module Slots					
10/100Base-TX	-	-	-	-	-
10/100/1000Base-T	24	8	24	16	8
1000Base-SX(SFP)	4	2	4	-	2
1000Base Combo RJ-45/SFP	-	-	-	4	-
PoE Port	24	8	24	16	8
PoE Power Management					
IEEE 802.3af PoE (15.4W/P)	v	v	v	v	v
IEEE 802.3at PoE (30W/P)	v	v	v	v	v
Power Budget Management UI	v	v	v	v	v
PD Power On/Off Control	v	v	v	v	v
PD Classification	v	v	v	v	v
Overloading Protecting	v	v	v	v	v
Power Consumption without PD Connection	20W	10W	20W	18W	10W
Total Power Budget	400W	160W	ES-5824PG-390W ES-5824PHG-195W	130W	65W
Performance					
Packet Buffer, Bytes	500K	144K	500K	500K	144K
MAC Address	8K	8K	8K	8K	8K
Jumbo Frame, Bytes	9.6K	9.6K	9.6K	9.6K	9.6K
Management					
Web-Based	v	v	v	v	v
Features					
IEEE802.1q VLAN	16	16	16	16	16
IEEE802.1d/w STP	v	v	v	v	v
IEEE802.3az Energy Efficient Ethernet Function	-	-	-	-	-
Port-Based/Tag-Based VLAN	v	v	v	v	v
Trunking Group	-	-	8	8	4
LACP	-	-	v	v	v
QoS	-	-	v	v	v
Priority Queues	-	-	4	4	4
IGMP Snooping	-	-	v	v	v
Storm Control	v	v	v	v	v
Port Mirroring	v	v	v	v	v
Fan-Less	-	-	-	-	-
Power Type	Internal Power	Internal Power	Internal Power	Internal Power	Internal Power
Physical					
Dimension(LxWxH)	441 x 310 x 44 mm	441 x 310 x 44 mm	440 x 330 x 44 mm	440 x 330 x 44 mm	440 x 220 x 44 mm
Rackmountable	v	v	v	v	v

PoE Web Smart Switches - Comparison Table



ES-5824P/PH	ES-5816P	ES-3208PHE	ES-5808P	ES-3204PHE
24-Port Fast Ethernet PoE+ / PoE Web Smart Switch with 2 Gigabit Combo Ports	16-Port Fast Ethernet PoE Web Smart Switch	8-Port Fast Ethernet PoE+ Lite Smart Switch with 2 Gigabit Combo Ports	8-Port Fast Ethernet PoE Web Smart Switch	8-Port Fast Ethernet PoE+ Lite Smart Switch with 2 Gigabit Combo Ports
24	16	8	8	4
-	-	-	-	2
-	-	-	-	-
2	-	2	-	-
24	16	8	8	4
v	v	v	v	v
v	-	v	-	v
v	v	v	v	v
v	v	v	v	v
v	v	v	v	v
v	v	v	v	v
14W	9W	14.2W	6W	13.4W
ES-5824P-390W ES-5824PH-195W	260W	120W	130W	120W
343K	192K	352K	64K	352K
4K	4K	4K	4K	4K
-	-	-	-	-
v	v	v	v	v
32	16	10	16	6
v	v	v	v	v
-	-	-	-	-
v	v	v	v	v
2	2	3	2	2
v	v	v	v	v
v	v	v	v	v
2	4	2	4	2
v	v	v	v	v
v	v	v	v	v
v	v	v	v	v
-	-	v	-	v
Internal Power	Internal Power	External Power	Internal Power	External Power
440 x 332 x 42 mm	440 x 220 x 42 mm	210 x 160 x 44 mm	266 x 160 x 42 mm	180 x 145 x 34 mm
v	v	v	-	v

* Maximum performance, actual data rates and coverage will vary depending on network conditions and environmental factors.
* Product appearance and specifications are subject to change without notice.

PoE Unmanaged Switches - Comparison Table



Model	GS-1008PV2	GS-1008P	GS-1008PL	GS-1008PH	GS-1008PHE
Description	8-Port Gigabit Ethernet PoE+ Switch	8-Port Gigabit PoE+ Switch	8-Port Gigabit PoE+ Switch	8-Port Gigabit Switch with 4 PoE+ Ports	8-Port Gigabit Switch with 4 PoE Ports
Port/Module Slots					
10/100Base-TX	-	-	-	-	-
10/100/1000Base-T	8	8	8	8	8
1000Base-SX(SFP)	-	-	-	-	-
1000Base Combo RJ-45/SFP	-	-	-	-	-
PoE Port	8	8	8	4	4
PoE Power Management					
IEEE 802.3af PoE (15.4W/P)	v	v	v	v	v
IEEE 802.3at PoE (30W/P)	v	v	v	v	-
Power Budget Management UI	-	-	-	-	-
PD Power On/Off Control	-	-	-	-	-
PD Classification	v	v	v	v	v
Overloading Protecting	v	v	v	v	v
Power Consumption without PD Connection	6W	5W	5W	5W	5W
Total Power Budget	180W	150W	80W	80W	48W
Performance					
Packet Buffer, Bytes	256K	128K	128K	128K	128K
MAC Address	8K	8K	8K	8K	1K
Jumbo Frame, Bytes	9K	9K	9K	9K	9K
Management					
Web-Based	-	-	-	-	-
Features					
IEEE802.1q VLAN	-	-	-	-	-
IEEE802.1d/w STP	-	-	-	-	-
IEEE802.3az Energy Efficient Ethernet Function	v	v	v	v	v
Port-Based/Tag-Based VLAN	-	-	-	-	-
Trunking Group	-	-	-	-	-
LACP	-	-	-	-	-
QoS	-	-	-	-	-
Priority Queues	-	-	-	-	-
IGMP Snooping	-	-	-	-	-
Storm Control	-	-	-	-	-
Port Mirroring	-	-	-	-	-
Fan-Less	v	v	v	v	v
Power Type	Internal Power	Internal Power	Internal Power	Internal Power	External Power
Physical					
Dimension(LxWxH)	180 x 230 x 44 mm	270 x 185 x 44 mm	270 x 185 x 44 mm	270 x 185 x 44 mm	165 x 118 x 38 mm
Rackmountable	v	v	v	v	v

PoE Unmanaged Switches - Comparison Table



GS-1005P	ES-1008P	ES-1008PL	ES-1008PH	ES-1008PHE	ES-5804PH
5-Port Gigabit Ethernet Switch with 4 PoE+ Ports	8-Port Fast Ethernet PoE+ Switch	8-Port Fast Ethernet PoE+ Switch	8-Port Fast Ethernet Switch with 4 PoE+ Ports	8-Port Fast Ethernet Switch with 4 PoE Ports	5-Port Fast Ethernet Switch with 4 PoE+ Ports
-	8	8	8	8	5
5	-	-	-	-	-
-	-	-	-	-	-
-	-	-	-	-	-
4	8	8	4	4	4
v	v	v	v	v	v
v	v	v	v	-	v
-	-	-	-	-	-
-	-	-	-	-	-
v	v	v	v	v	v
v	v	v	v	v	v
5.14W	5W	5W	5W	5W	3W
110W	150W	80W	80W	48W	40W
256K	96K	96K	96K	56K	64K
2K	1K	1K	1K	1K	1K
9K	-	-	-	-	-
-	-	-	-	-	-
-	-	-	-	-	-
-	-	-	-	-	-
-	-	-	-	-	-
-	-	-	-	-	-
-	-	-	-	-	-
-	-	-	-	-	-
-	-	-	-	-	-
-	-	-	-	-	-
-	-	-	-	-	-
v	v	v	v	v	v
Internal Power	Internal Power	Internal Power	Internal Power	External Power	External Power
180 x 230 x 44 mm	270 x 185 x 44 mm	270 x 185 x 44 mm	270 x 185 x 44 mm	146 x 84 x 42 mm	130 x 97 x 24 mm
v	v	v	v	v	v

* Maximum performance, actual data rates and coverage will vary depending on network conditions and environmental factors.
* Product appearance and specifications are subject to change without notice.

Web Smart Switches - Comparison Table



Model	ES-5226RS+	ES-5240G+ V3	ES-5160G+ V3
Description	24-Port Fast Ethernet Web Smart Switch with 2 Gigabit Combo Ports	24-Port Gigabit Web Smart Switch with 4 SFP Slots	16-Port Gigabit Web Smart Switch with 4 SFP Slots
Port/Module Slots			
10/100BASE-TX	24	-	-
10/100/1000Base-T	-	24	16
1000Base-SX(SFP)	-	-	-
1000BASE-T/SX Combo	2	4	4
Performance			
Packet Buffer (Bytes)	512K	340K	340K
MAC Address	4K	8K	8K
Jumbo Frame (Bytes)	-	9.6K	9.6K
Features			
IEEE 802.1q VLAN	v	v	v
IEEE 802.1D STP	-	v	v
IEEE 802.1w RSTP	-	v	v
Port-Based VLAN	v	v	v
Tag-Based VLAN	32	16	16
Trunking Group	3	8	8
LACP	v	v	v
QoS	v	v	v
Priority Queues	2	4	4
IGMP Snooping	-	v	v
Storm Control	v	v	v
Port Mirroring	v	v	v
Management			
SNMP	-	V1/V2C	V1/V2C
RS-232 CLI	-	-	-
Web-Based	v	v	v
Physical			
Dimension(LxWxH)	440 x 220 x 44 mm	440 x 220 x 44 mm	440 x 220 x 44 mm
Rackmountable	v	v	v

Unmanaged Switches - Comparison Table



Model	GS-1016	ES-1024	ES-1016	ES-5800M V2	ES-5500M V2
Description	16-Port Gigabit Rack-Mount Switch	24-Port Fast Ethernet Rack-Mount Switch	16-Port Fast Ethernet Rack-Mount Switch	8-Port Gigabit Desktop Media Switch	5-Port Gigabit Desktop Media Switch
Port/Module Slots					
10/100BASE-TX	-	24	16	-	-
10/100/1000BASE-T	16	-	-	8	5
1000BASE-SX (SFP)	-	-	-	-	-
Standards					
IEEE 802.3 10BASE-T	v	v	v	v	v
IEEE 802.3u 100BASE-TX	v	v	v	v	v
IEEE 802.3ab 1000BASE-T	v	-	-	v	v
IEEE 802.3z 1000BASE-X	-	-	-	-	-
IEEE 802.3x Flow Control	v	v	v	v	v
IEEE 802.3az Energy Efficient Ethernet	v	v	v	v	v
Performance					
Packet Buffer (Bytes)	256K	256K	256K	128K	128K
MAC Address	8K	8K	8K	8K	2K
Auto-MDI/MDIX	v	v	v	v	v
Jumbo Frame (Bytes)	9K	-	-	9K	9K
Performance					
Input Voltage	100-240V AC, 50-60Hz	100-240V AC, 50-60Hz	100-240V AC, 50-60Hz	100-240V AC, 50-60Hz	100-240V AC, 50-60Hz
Max. Power Consumption	6.21W	4W	3W	3W	3W
Hardware Features					
Fanless	v	v	v	v	v
Physical					
Dimension(LxWxH)	441 x 131 x 44 mm	441 x 131 x 44 mm	441 x 131 x 44 mm	193 x 84 x 26 mm	149 x 84 x 26 mm
Rackmountable	v	v	v	-	-

* Maximum performance, actual data rates and coverage will vary depending on network conditions and environmental factors.
* Product appearance and specifications are subject to change without notice.

GP-101ST
IEEE 802.3at Gigabit PoE Splitter with Adjustable 5VDC, 9VDC or 12VDC Output

- Complies with IEEE 802.3af and 802.3at (Power over Ethernet) standards.
- Complies with IEEE 802.3/802.3u/802.3ab standards.
- Automatically detects PoE terminals and supplies inline power.
- Allows for non-PoE device installation in remote locations where power is unavailable.
- Reduces installation and network equipment costs.
- PoE short circuit protection to safeguard network devices.
- Adjustable switch for 5V, 9V or 12V DC output power.
- Auto-sensing power drawn from 802.3af / 802.3at power source equipment (PSE) devices.
- Supplies up to 25 watts.



GP-101SF
IEEE 802.3af Gigabit PoE Splitter with Adjustable 5VDC, 9VDC or 12VDC Output

- Complies with IEEE 802.3af (Power over Ethernet) and IEE 802.3/802.3u/802.3ab.
- Supports standard 802.3af PoE and proprietary PoE such as PoE injectors.
- Splits a networked PoE connection into separate power and Gigabit data connections.
- Allows for non-PoE device installation in remote locations where power is unavailable.
- Adjustable switch for 5V, 9V or 12V DC output power.
- PoE short circuit protection to safeguard network device.
- Delivers power and data to PoE splitter from up to 100 meters (328 feet) over a single Ethernet cable.
- Reduces installation and equipment costs.
- Easy plug-and-play desktop or wall-mounted installation.



GP-101IT
IEEE 802.3at Gigabit PoE Injector

- Complies with IEEE 802.3af and IEEE 802.3at standards.
- Supports 1 x 10/100 /1000Mbs (data) interface to connect hubs or switches.
- Supports 1 x 10/100 /1000Mbps (data / PoE power supply) to connect PoE-compatible devices.
- Automatic detection and identification of IEEE 802.3af/at powered devices with automatic output power matching.
- Remote power feeding up to 100m.
- Maximum 30W power supply.



SFP/Mini GBIC
Mini-GBIC/Small Form-Factor Pluggable (SFP) Transceiver

- Complies with IEEE 802.3z gigabit Ethernet and fiber channel standards.
- Industry standard SFP package.
- Single 3.3V power supply.
- Simplex/duplex LC connector with up to 1.25Gbps bi-directional data links.
- Die-cast metal housing for low EMI.
- Hot-pluggable.
- Class 1 laser product in compliance with EN 60825-1.



ET-912+
10/100 BASE-TX to 100BASE-FX WDM Single Fiber Media Converter

- ET-912MSC+ 10/100BASE-TX to 100BASE-FX (MM/SC/1310nm/2KM).
- ET-912MST+ 10/100BASE-TX to 100BASE-FX (MM/ST/1310nm/2KM).
- ET-912SSC3+ 10/100BASE-TX to 100BASE-FX (SM/SC/1310nm/30KM).
- ET-912SSC4+ 10/100BASE-TX to 100BASE-FX (SM/SC/1310nm/40KM).
- ET-912SSC6+ 10/100BASE-TX to 100BASE-FX (SM/SC/1310nm/60KM).
- ET-912SSC8+ 10/100BASE-TX to 100BASE-FX (SM/SC/1310nm/80KM).
- ET-912SSCA+ 10/100BASE-TX to 100BASE-FX (SM/SC/1550nm/DFB-100KM).
- ET-912SW2A+ 10/100TX to 100FX, 20km, TX 1310, RX 1550.
- ET-912SW2B+ 10/100TX to 100FX, 20km, TX 1550, RX 1310.
- ET-912SW4A+ 10/100TX to 100FX, 40km, TX 1310, RX 1550.
- ET-912SW4B+ 10/100TX to 100FX, 40km, TX 1550, RX 1310.



ET-913+ V2
10/100/1000BASE-T to 1000BASE-SX/LX Media Converter

- ET-913MSC+ V2 10/100/1000BASE-T to 1000BASE-SX (MM/SC/850nm/550m).
- ET-913SSC1+ V2 10/100/1000BASE-T to 1000BASE-LX (SM/SC/1310nm/10km).
- ET-913SSC2+ V2 10/100/1000BASE-T to 1000BASE-LX (SM/SC/1310nm/20km).
- ET-913SSC3+ V2 10/100/1000BASE-T to 1000BASE-LX (SM/SC/1310nm/30km).
- ET-913SSC6+ V2 10/100/1000BASE-T to 1000BASE-LX (SM/SC/1550nm/DFB-60km).
- ET-913SSC8+ V2 10/100/1000BASE-T to 1000BASE-LX (SM/SC/1550nm/DFB-80km).
- ET-913SW2A+ V2 WDM 10/100/1000BASE-T to 1000BASE-LX , 20km, TX 1310, RX 1550.
- ET-913SW2B+ V2 WDM 10/100/1000BASE-T to 1000BASE-LX , 20km, TX 1550, RX 1310.
- ET-913SW4A+ V2 WDM 10/100/1000BASE-T to 1000BASE-LX , 40km, TX 1310, RX 1550.
- ET-913SW4B+ V2 WDM 10/100/1000BASE-T to 1000BASE-LX , 40km, TX 1550, RX 1310.



ET-913 SFP V2
10/100/1000BASE-T to 1000BASE-SX/LX SFP Media Converter

- Complies with IEEE 802.3ab and 802.3z Gigabit Ethernet standards.
- One 10/100/1000BASE-T gigabit Ethernet TP port and one SFP slot for gigabit link.
- One SFP slot for multi- or single-mode SFP modules.
- Full duplex, auto-MDI/MDIX, and auto-negotiation support.
- Supports link fault pass-through.



ET-940MCR/ET-950MCR
16-Slot Media Converter Chassis with Redundant Power Supply

- Supports up to 16 media converters.
- Supports 19-inch standard rack-mounts.
- Supports Fast Ethernet, gigabit Ethernet, single-mode, multi-mode fiber media converters.
- Supports hot-swappable media converters and power supplies.
- Two redundant power supplies with two cooling fans*
- Power isolation design to ensure each bay is electrically isolated from others.
- Cost-effective and easy installation.

* For the ET-950MCR only. An optional power supply (ET-940PS) is available for the ET-940MCR.



* Maximum performance, actual data rates and coverage will vary depending on network conditions and environmental factors.
* Product appearance and specifications are subject to change without notice.

EK-PSK2 / EK-PSK4

2/4-Port PS/2 KVM Switch with Cables

- Supports video resolutions up to 2048 x 1536 @ 350MHz.
- Supports autoscan (programmable) and hot plugging.
- Hotkey and push button KVM switching.
- Supports DOS, Win3.X, Win 95/98/98 SE/ME/XP/2000/NT/Vista/7, Netware, Unix, and Linux.
- KVM cables included.
- No software or external power required.



EK-PAK2 / EK-PAK4

2/4-Port PS/2 KVM Switch with Cables and Audio/Mic Support

- Supports video resolutions up to 2048 x 1536 @ 350MHz.
- Supports audio and microphone switching.
- Supports autoscan (programmable) and hot plugging.
- Hotkey and push button KVM switching.
- Supports DOS, Win3.X, Win 95/98/98 SE/ME/XP/2000/NT/Vista/7, Netware, Unix, and Linux.
- KVM cables included.
- No software or external power required.



EK-UAK2 / EK-UAK4

2/4-Port USB KVM Switch with Cables and Audio/Mic Support

- Supports video resolutions up to 2048 x 1536 @ 350MHz.
- Supports audio and microphone switching.
- Supports autoscan (programmable) and hot plugging.
- Hotkey and push button KVM switching.
- Supports DOS, Win3.X, Win 95/98/98 SE/ME/XP/2000/NT/Vista/7, Netware, Unix, and Linux.
- KVM cables included.
- No software or external power required.



EK-2U2CA

2-Port USB KVM Switch with Cables

- No software and external power required.
- Built-in USB ports for both the PC side and the console side.
- Built-in remote Quick Switch button and speaker & microphone interfaces.
- Supports auto scan (programmable) and hot plugging.
- 2 built-in combo cables.
- Supports DOS, Win3.X, Win 95/98/98 SE/ME/XP/2000/NT/Vista/7, Netware, Unix, and Linux.



EK-PSK2 / EK-PSK4

2/4-Port PS/2 KVM Switch with Cables

- Supports video resolutions up to 2048 x 1536 @ 350MHz.
- Supports autoscan (programmable) and hot plugging.
- Hotkey and push button KVM switching.
- Supports DOS, Win3.X, Win 95/98/98 SE/ME/XP/2000/NT/Vista/7, Netware, Unix, and Linux.
- KVM cables included.
- No software or external power required.



EK-PAK2 / EK-PAK4

2/4-Port PS/2 KVM Switch with Cables and Audio/Mic Support

- Supports video resolutions up to 2048 x 1536 @ 350MHz.
- Supports audio and microphone switching.
- Supports autoscan (programmable) and hot plugging.
- Hotkey and push button KVM switching.
- Supports DOS, Win3.X, Win 95/98/98 SE/ME/XP/2000/NT/Vista/7, Netware, Unix, and Linux.
- KVM cables included.
- No software or external power required.



EK-UAK2 / EK-UAK4

2/4-Port USB KVM Switch with Cables and Audio/Mic Support

- Supports video resolutions up to 2048 x 1536 @ 350MHz.
- Supports audio and microphone switching.
- Supports autoscan (programmable) and hot plugging.
- Hotkey and push button KVM switching.
- Supports DOS, Win3.X, Win 95/98/98 SE/ME/XP/2000/NT/Vista/7, Netware, Unix, and Linux.
- KVM cables included.
- No software or external power required.



EK-2U2CA

2-Port USB KVM Switch with Cables

- No software and external power required.
- Built-in USB ports for both the PC side and the console side.
- Built-in remote Quick Switch button and speaker & microphone interfaces.
- Supports auto scan (programmable) and hot plugging.
- 2 built-in combo cables.
- Supports DOS, Win3.X, Win 95/98/98 SE/ME/XP/2000/NT/Vista/7, Netware, Unix, and Linux.



Headquarters

Edimax Technology Co., Ltd.

6F., No.3, Wu-Chuan 3rd Road, Wu-Gu, New Taipei City 24891, Taiwan

Tel: +886-2-77396888 Fax: +886-2-77396887

Email: sales@edimax.com.tw, support@edimax.com.tw

European Headquarters

Edimax Technology Europe B.V.

Fijenhof 2, 5652 AE Eindhoven, The Netherlands

Tel: +31-40 250 1200 Fax: +31-40 251 6273

Email: sales@edimax.nl, support@edimax.nl

French Office

EDIMAX Technology Europe B.V. France

6, rue de la Mare Blanche, Noisiel, 77186, France

Tel: +33-160535680 Fax: +33-160535689

Email: info@edimax.fr, support@edimax.fr

German Office

Edimax Technology Europe B.V.

Gießerallee 21, 47877 Willich, Germany

Tel: +49-215488-77334 Fax: +49-215488-77339

Email: sales@edimax-de.eu, support@edimax-de.eu

Poland Office

Edimax Technology Poland. Sp. Z o.o.

ul. Wołoska 7, 02-675 Warsaw, Poland

Tel: +48-22-6079480 Fax: +48-22-6079481

Email: sales@edimax.pl, support@edimax.pl

Romania Office

Edimax Technology Romania

030122 Bucuresti, Str. Splaiul Unirii, nr. 10, bl. B5, sc. 1, et. 5, ap.15, Sector 4

Tel: +40-31-4250126 Fax: +40-31-4250125

Email: sales@edimax.ro, support@edimax.ro

Russia Office

Edimax Technology Russia

Tel: +7-499-7266678 Email: sales@edimax.ru, support@edimax.ru

Spain Office

Edimax Technology Spain

Email: info@edimax.es

Ukraine Office

Edimax Technology Ukraine

Magnitohorska 1, FIM Center, KYIV

Tel : +38 (044) 5002445 Tech Support: +38 (044) 5002446

Fax : +38 (044) 5002447

Email: sales@edimax.ua, support@edimax.ua

United Kingdom Office

Edimax Technology (UK) Ltd.

Add: Suite 358, Silbury Court, Silbury Boulevard, Milton Keynes MK9 2AF

Tel: +44-845-1238307 Fax: +44-845-1238306

Email: info@edimax.co.uk, support@edimax.co.uk

MEA Office

Edimax Technology MEA

P.O. Box 18372, Plot MO 0646, Jebel Ali Free Zone, Dubai,

United Arab Emirates

Tel: +971-4-804-1888 Support: +971 800 334629 [800-EDIMAX]

Fax: +971-4-883-4079

Email: sales@edimax-me.com, technical.support@edimax-me.com

Edimax Worldwide Offices

USA Office

Edimax Computer Company

3350 Scott Blvd., Bldg.15 Santa Clara, CA 95054, USA

Tel: +1-408-4961105 Fax: +1-408-9801530

Email: sales@edimax.com, support@edimax.com

Australia Office

Edimax Technology Australia Pty. Ltd.

Level 1, 203 Blackburn Road, Mt Waverley, VIC 3149, Australia

Toll Free : 1300 540 833 (AUS)

Tech support: +61-8-61022811(AUS) ; +64-9-8870589(NZ)

Weekday: 11:00am to 19:00pm ; UTC/GMT+10hr

Email: sales@edimax-au.com, support@edimax-au.com

China Office

Edimax Technology China

Room 1402, 14F., No. 400, Caobao Rd., Xuhui District,

Shanghai, 200233, China

Tel: +86-21-5448-2117 Fax: +86-21-3461-6788-2

Email: sales@edimax.com.cn, service@edimax.com.cn

Hong Kong Office

Edimax Technology Hong Kong

Unit 2301, 23/F, World-wide House, 19 Des Voeux Rd Central,

Central, HK

Tel: +852-2169 6311 Fax: +852-2169 6300

Email: markchan@edimax.com.tw, service@edimax.com.cn

India Office

Edimax Technology Co. Ltd.

Technical & RMA Support: +91 9867520529 / 9780021413

Bulk & Corporate Enquiries: +91 9818029555

Working Hours: 10am ~ 7pm (IST)

Monday ~ Saturday (except national holidays)

Email: support_india@edimax.com.tw

Indonesia Office

PT. Edimax Teknologi Indonesia

Ruko Mangga Dua Square Blok A No. 5 Jl. Gunung Sahari Raya

Jakarta Utara 14430, Indonesia

Phone : +6221 6231 2991 Fax : +6221 6231 2992

(8:30am ~ 5:30pm, Monday ~ Sunday except national holidays)

Email : sales@edimax.co.id, support@edimax.co.id

South East Asia Office / Singapore Service Centre

Edimax Technology (SE Asia) Pte Ltd

Add: B1K 1003 Bukit Merah Central #07-25 Singapore 159836

Tel: +(65) 31062273 ; +(65) 3159 0598

Technical Support Hotline VOIP: 3159 0598 Ext: 2

(9am~6pm, Monday ~ Friday except national holidays)

E-Mail: sales@edimax.com.sg, support@edimax.com.sg