

## SKYMANAGE PC



SKYMANAGE PC

## Wireless Network Management Software

*Simplified Wireless Network Management for Businesses, Hospitality, or Schools with Multi-Site Locations.*

### KEY FEATURES

- **Centralized, Remote AP Management:** Windows web-based Wi-Fi network management software for centralized remote configuration, control and monitoring.
- **Easy, Flexible, Scalable WLAN Configuration:** Managed up to 250 Edimax Pro access points including both indoor & outdoor APs and up to 10 multiple sites with multi-tenant capability.
- **Easy Installation:** Designed with easy setup wizard and auto-discovery utility to locate APs on the network.
- **Private-Cloud Virtual AP Controller:** Software can be installed on virtual cloud server such as AWS (Amazon Web Service) as a private-cloud\* AP controller.
- **Easy-to-Use Graphical Status, Reports and Tools:** Real-time dashboard overview of historical status reports, site images, zone plan and Google Maps integration for customizable AP deployment, simulation, planning, live monitoring & configuration.
- **Built for Businesses and Projects:** Wide range of commercial applications and multi-sites, ideal for SMB environments such as offices, hotels, schools, resorts, retailers, shopping malls, community, residential, etc.
- **Quick Setup and Optimized Wi-Fi Network Performance:** Rich features including traffic management, RF performance configuration, spectral analysis, Airtime Fairness, Band steering, auto channel, captive portal, group setup, group configuration, group firmware upgrade, group restart, secure TLS Protocol and NAT traversal supported, single passcode and splash page for guest login.
- **Supported APs:** Edimax Pro CAP, WAP, OAP & IAP series.

SKYMANAGE PC is an easy-to-use Wi-Fi network management software to easily deploy, configure, manage and monitor connected Edimax Pro Wi-Fi access points and wireless networks devices from anywhere with security. It is a Windows web-based software with intuitive interface which is easy enough for anyone to use without the need of an IT administrator.

The system is ideal for the business with multiple sites or system integrator projects of small to medium business network that can be remotely controlled around the world up to 10 multiple sites with multi-tenant and flexible scalability that supports up to 250 Edimax Pro Access Points without any licensing fees.

### Centralized, Remote AP Management

Installed on a local PC or installed on a cloud server\* such as AWS for remote management. SKYMANAGE PC helps network administrators to easily manage and monitor the connected Edimax Pro access points and Wi-Fi clients across multiple sites with multi-tenant capability.

### Easy, Flexible, Scalable WLAN Configuration

Supporting up to 250 access points and 10 multiple sites with easy configuration wizard and access point auto-discovery utility, the SKYMANAGE PC enables the system integrator or network administrator to effectively and efficiently deploy fully functional wireless networks with flexibility and scalability. Additionally, multiples sites and AP groups can be configured and added in the network or update their settings at one time.

\*Need to be installed in cloud virtual server service such as AWS which is not included with the software.

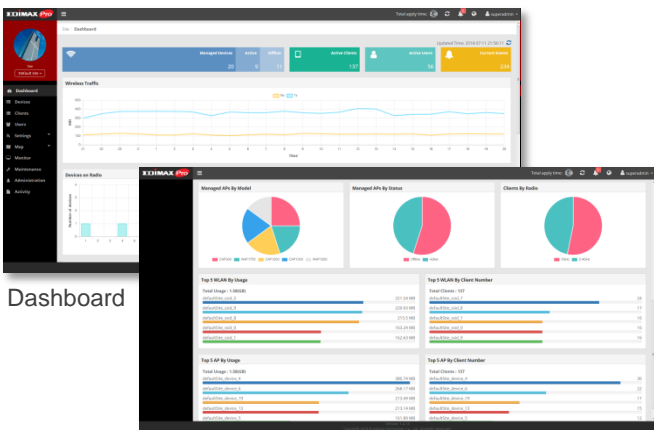
# Wireless Network Management Software

## Private-Cloud Virtual AP Controller \*

Easily accessible through any standard web browser, SKYMANAGE PC software is able to implement on virtual cloud server as a private-cloud\*. A Wi-Fi network management application which allows the admin remotely access to manage the Wi-Fi networks and access points from anywhere, anytime. *\*Need to be installed in cloud virtual server service such as AWS which is not included with the software.*

## Easy-to-Use Graphical Status, Reports and Tools

Intuitive interface and graphical dashboard showing the network status for easy configuration and quick access to key performance and monitoring information. Network administrators can use site images, zone plan and Google Maps for visual overviews of network setup, with easy drag-and-drop features to plan and simulate AP deployment to determine the best coverage areas for your APs.

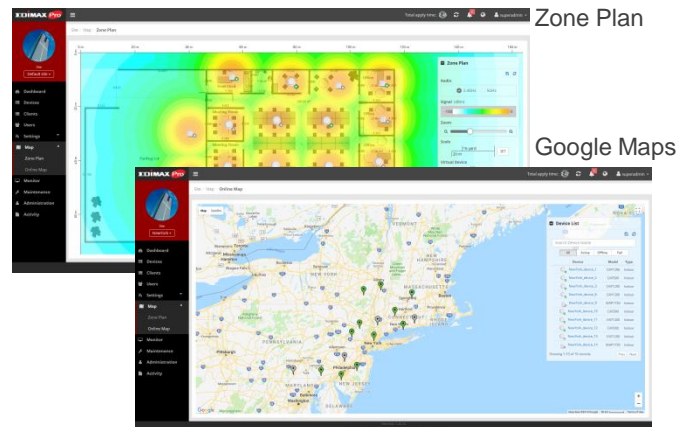


## Built for Business and Projects

Easy to use and view real-time status and historical data with a dashboard overview web UI for the connected APs and clients across multiple sites. With rich features including traffic management, RF performance configuration, spectral analysis, Airtime Fairness, Band steering, auto channel, guest portal and more, SKYMANAGE PC is ideal for the demands of small-to-medium business environments including offices, hotels, schools, resorts, retailers, shopping malls, community, residential, etc., and system integrator projects.

## No License Fees at Lower Total Cost of Ownership

SKYMANAGE PC is free to use and no licensing cost. Total cost of ownership (TCO) of wireless network deployment with the SKYMANAGE PC impresses even the most cost-restricted organizations. Guaranteed to provide unmatched WLAN ROI (Return of Investment).



## SUPPORTED APS

Edimax Pro CAP, WAP, IAP, and OAP series access points.

### Ceiling-Mount AP



CAP1750



CAP1300



CAP1200



CAP300



IAP1200

### Wall-Mount AP



WAP1750



WAP1200



OAP1750



OAP1300



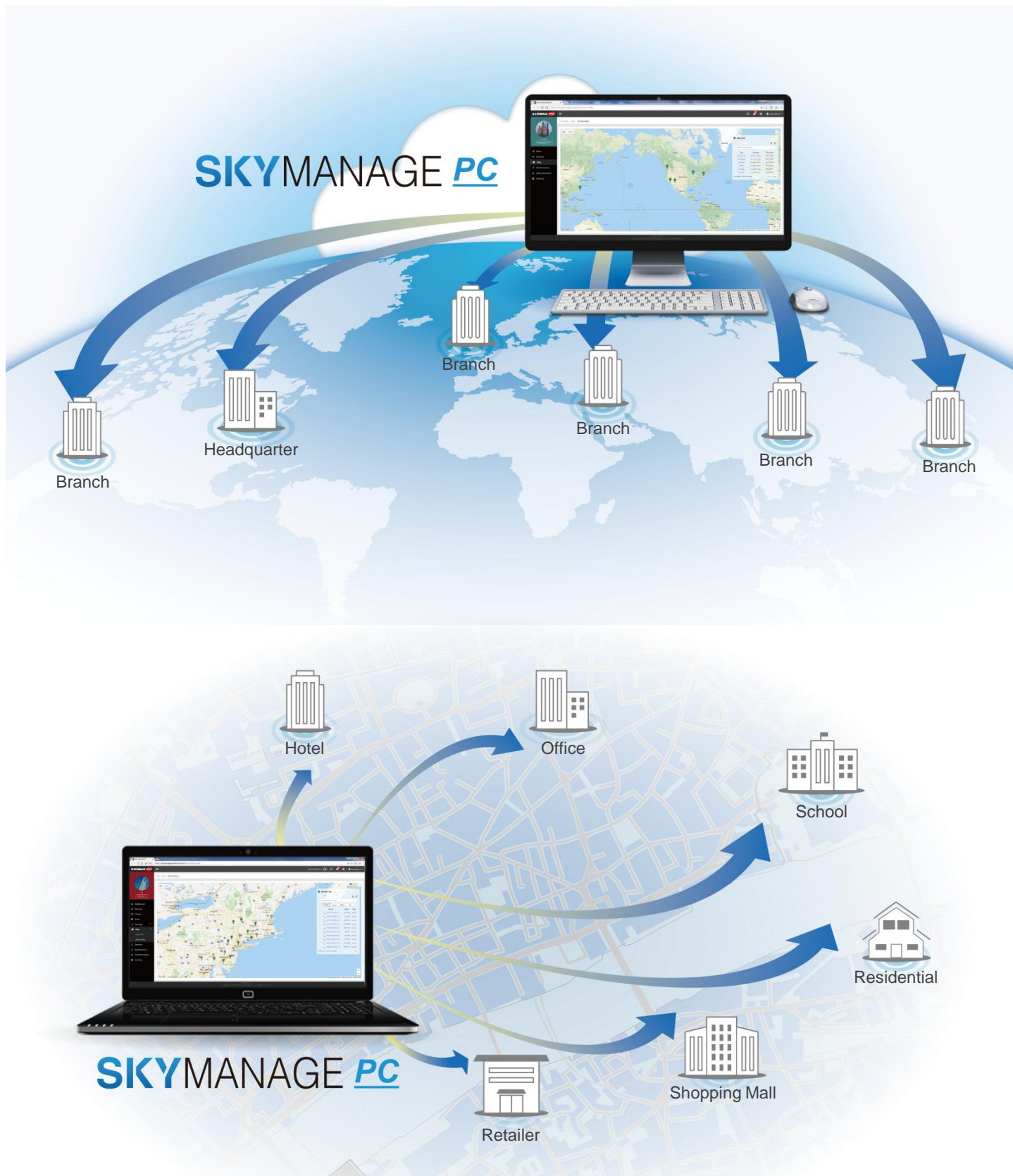
OAP900

### Outdoor AP

*\*The software is free and provided "As Is" without warranty, service, or support. Please contact Edimax authorized distributor to download the software.*

## Wireless Network Management Software

### APPLICATION DIAGRAM



*\*The software is free and provided "As Is" without warranty, service, or support. Please contact Edimax authorized distributor to download the software.*



# Wireless Network Management Software

## SPECIFICATIONS

Management	
Interface	Windows Web-Based
Setup Wizard	V
AP Provision	V
Dashboard	V
Multiple Sites	V
Multiple Tenant	V
Device List	V
Wireless Client List	V
Guest User List	V
Wireless Scheduling	V
Activities	V
Bulk Firmware Upgrade	V
Supported AP Models	All Edimax Pro APs
Settings	
Radio	V
WLAN	V
Radius	V
Advance	V
VLAN	V
Time & Date	V
Administration	V
Override Settings	V
Bulk Configurations	V
Save & Apply	V
Statistics	
Radio	Channel
Network Traffic	Tx / Rx
Client Numbers	V
System	CPU / Memory Usage
Deployment	
L3 AP Management	V
AP Planning	V
Locate AP	Buzzer / LED / Reboot
Zone Plan	V
Google Maps	V

Radio Resource Management	
Auto Channel	V
AirTime Fairness	V
Band Steering	V
802.11 r/k Roaming	V
Wireless QoS	
Traffic Shaping (Per-SSID)	V
Security	
Wireless L2 Isolation	V
TLS Protocol	V1.2
NMS Security Key	V
NAT Traversal	V
Guest Network	
Guest Portal	V
Guest Access	V
Function Items	
Managed AP	250
Managed Sites	10
WLAN SSIDs	16 +16
Schedule	20
Admin	5
System Requirement	
CPU	Intel Core i5
Memory	8GB RAM
Storage	20GB Free HD Space
Operation System	Windows 7 or Higher, 64-bit
Software	Web Browser (Internet Explorer 10 or above, Firefox 34.0 or above, Chrome 31.0 or above), Java 8

*\*The software is free and provided "As Is" without warranty, service, or support.  
Please contact Edimax authorized distributor to download the software.*

Maximum performance, actual data rates, and coverage will vary depending on network conditions and environmental factors. Product specifications and design are subject to change without notice.  
Copyright © 2018 Edimax Technology Co. Ltd. All rights reserved.


[www.edimax.com](http://www.edimax.com)