



180° Panoramic



Full HD 1080P



ePTZ



Motion & Sound
Detection



microSD Slot

IC-5150W

Smart Full HD Wi-Fi Fisheye Camera with 180° Panoramic View

The Edimax IC-5150W Fisheye network camera gives you wider, 180-degree panoramic views for more efficient security and monitoring in your home, shop or factory without the blind spots associated with traditional standard lens network cameras. And with Edimax Plug-n-View technology, there's no complicated setup so you can connect the camera to the Internet without any hassle and monitor remotely from a smartphone, tablet or laptop.

With a built-in microphone, sound and motion detection system and microSD/SDHC card slot, the camera is well equipped to protect your property as well as fully customizable. Motion detection can be configured according to user-defined areas, and together with sound detection and sound-triggered recording offers a powerful security system that's always on alert to capture anything suspicious. And for installation and monitoring, the intuitive Wi-Fi user interface makes everything a breeze. See the big picture in 1080p Full HD and never miss a thing.

180° Panoramic View Covers More with Less

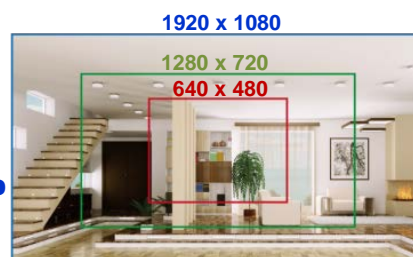
Designed with a 180-degree wide-angle panoramic lens for better, wider wall-to-wall views and without the limitations of blind spots and awkward angles that are found with traditional Wi-Fi cameras. Native, built-in dewarping flattens images and videos into a single usable view in different directions that would otherwise need multiple cameras, cutting bandwidth and storage costs. Get more value with your security budget with a fisheye camera that has the capability to provide the same coverage as 2 - 4 standard cameras.



1080p Full HD Images and Videos

High-quality clear and crisp imaging at 1080p Full HD (1920 x 1080) with a 2 megapixel CMOS sensor and recording at 30 frames per second. A wide F2.0 lens covers a horizontal viewing angle of 180-degree.

**FULL
HD**
HIGH DEFINITION
1080P



*Actual viewing resolution and frame rate of network cameras depend on connection speed.

Maximum performance, actual data rates, and coverage will vary depending on network conditions and environmental factors. Product specifications and design are subject to change without notice.

Copyright © 2017 Edimax Technology Co. Ltd. All rights reserved.

www.edimax.com

Smart Full HD Wi-Fi Fisheye Camera with 180° Panoramic View

IC-5150W

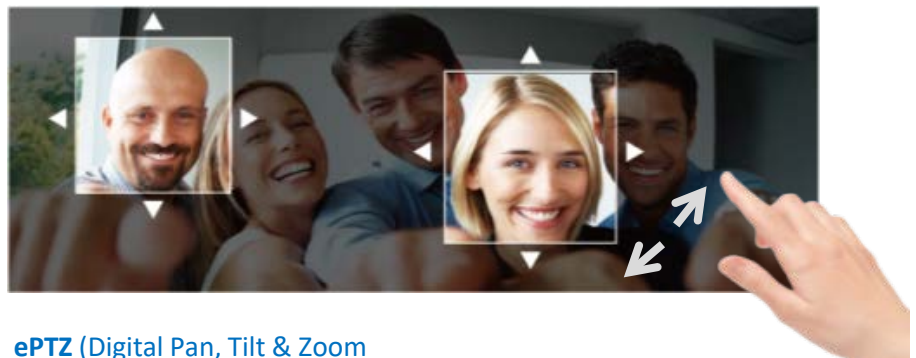
Native Dewarping with "Normal" View

Built-in dewarping and image distortion reduction to convert images or videos to a "normal" view, for better usability and easy monitoring and playback.



ePTZ Control for Rich Detail

Digital pan, tilt & zoom on areas of interest for better focus and rich detail while still recording the bigger picture.



ePTZ (Digital Pan, Tilt & Zoom)

Wide Dynamic Range (WDR)

Equipped with a high-performance image sensor and Wide Dynamic Range (WDR) feature to enable high-quality imaging and recoding in more detail under low and poor light or high contrast conditions.



Smart Full HD Wi-Fi Fisheye Camera with 180° Panoramic View

IC-5150W

Motion Detection Triggered Recording

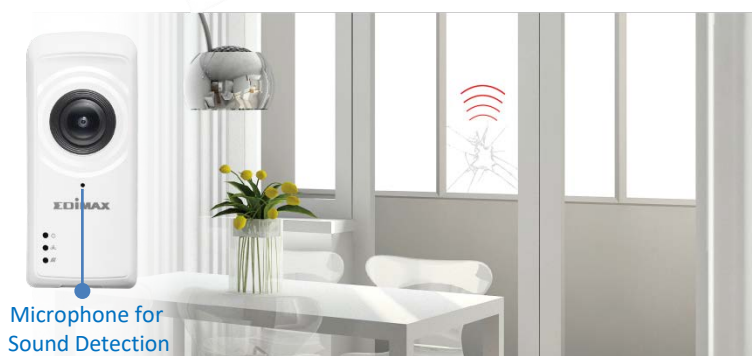
The powerful built-in motion detection system with pre-defined detection regions offers peace of mind that you will capture any suspicious activity. When motion is detected, the network camera will produce video footage of the event immediately – storing the data on a microSD/SDHC card or sending it automatically via email or ftp.



Sound Detection Triggered Recording

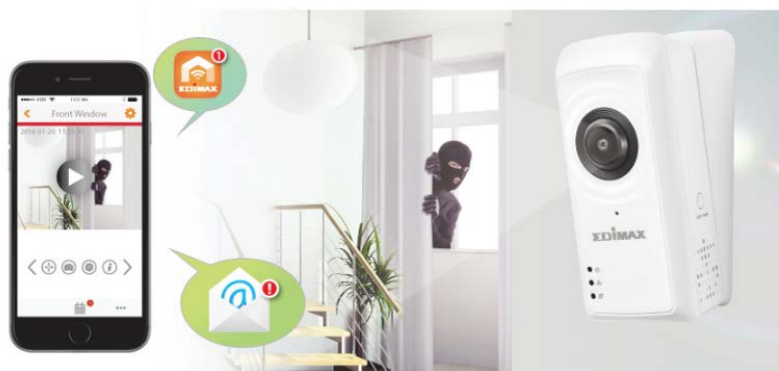
Featuring sound detection capabilities and built-in microphone. When sound is detected, the network camera will take video footage of the event immediately in the same manner as with motion detection, and store the files locally on a microSD/SDHC card or send via email or ftp.

Integrated sound offers a further level of security than motion-detection and visual imaging alone, providing critical real-time or post-event information about a situation, particularly in scenarios where events occur outside the camera's field of vision. The sounds of breaking windows, doors or anything else suspicious can still be registered even in situations where the event can't be seen.



Push Notifications & Video Alerts

Push notifications are triggered by motion or sound detection, and when a detection system is triggered, the camera additionally sends video alerts to email or microSD card. If the camera ever goes offline, push notifications are also sent when the camera comes back online to keep users informed about any unusual activity.



*Actual viewing resolution and frame rate of network cameras depend on connection speed.

Maximum performance, actual data rates, and coverage will vary depending on network conditions and environmental factors. Product specifications and design are subject to change without notice.

Copyright © 2017 Edimax Technology Co. Ltd. All rights reserved.

Smart Full HD Wi-Fi Fisheye Camera with 180° Panoramic View

IC-5150W

Plug-n-View for 24/7 Easy Remote Monitoring

Edimax Plug-n-View technology makes it easy for you to keep an eye on your home, garage, shop, factory or other assets wherever you go. With Plug-n-View technology, you can connect your network camera in a few simple steps and access it remotely with a smartphone, tablet, or computer no matter where you are.



Free App



Download on the
App Store

ANDROID APP ON
Google play



Free EdiLife viewer app
for iPhone & Android phones

microSD/SDHC Card Slot for Local Storage

A built-in microSD/SDHC card slot supports cards up to 64GB for local storage and backup.



SOFTWARE FEATURES

- Easy remote monitoring via iPhone, iPad, Android, PC & Mac
- High-speed H.264 & MJPEG video compression
- Motion & sound detected video to microSD/SDHC card, ftp or email
- Pre- & post-recording upon detected motion
- Viewer software to access 16 network cameras simultaneously
- Manual/scheduled/cycle recording

Keep An Eye On What You Care About The Most

Baby / Elder



Pet



Garage



Anywhere & Anytime

Office



Hotel

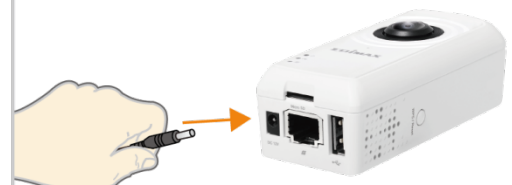


In Public

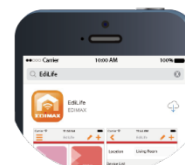


Three Steps for Easy Smartphone Setup

- 1 Power on network camera.



- 2 Download the EdiLife app from the App Store or Google Play.



- 3 Pair the camera with your app & Wi-Fi and watch a live stream from anywhere!



*Actual viewing resolution and frame rate of network cameras depend on connection speed.

Maximum performance, actual data rates, and coverage will vary depending on network conditions and environmental factors. Product specifications and design are subject to change without notice.

Copyright © 2017 Edimax Technology Co. Ltd. All rights reserved.

Smart Full HD Wi-Fi Fisheye Camera with 180° Panoramic View

IC-5150W

TECHNICAL SPECIFICATIONS

Function	Management	Interface
<ul style="list-style-type: none"> Easy remote monitoring via iPhone, iPad, Android, PC & Mac 180 degree (H), 142 degree (V) & 206 degree (D) viewing angle Supports dynamic DNS service Built-in microphone Motion/sound detection recording and alerts to microSD/SDHC card, email and FTP microSD/SDHC card slot for local storage Multi-view mode 	<ul style="list-style-type: none"> EdiView Finder (Windows/Mac) 16-channel viewer Web management interface Firmware upgradable iPhone & iPad viewer app Android viewer app 	<ul style="list-style-type: none"> Ethernet (RJ-45) port Power jack Reset/WPS button Internal antenna microSD/SDHC card slot Microphone USB 2.0 port LED indicators: Internet, LAN/Wi-Fi LNK/ACT, Power
Video	Video Settings	Supported Protocols
<ul style="list-style-type: none"> High-speed H.264 & MJPEG video compression 1920 x 1080 up to 30 fps 1280 x 720 up to 30 fps 640 x 480 up to 30 fps 320 x 240 up to 30 fps 	<ul style="list-style-type: none"> Resolution: Full HD (1920 x 1080), HD (1280 x 720), VGA (640 x 480), QVGA (320 x 240), Frame rate: 5, 10, 15, 20, 24 or 30 fps 	<ul style="list-style-type: none"> IPv4, HTTP, TCP, ICMP, RTSP, RTP, UDP, RTCP, SMTP, SNMP, FTP, DHCP, ARP, DNS, PPPoE
Standards	RF Output Power	Power
<ul style="list-style-type: none"> Fast Ethernet IEEE 802.3/802.3u Wireless IEEE 802.11b/g/n 	<ul style="list-style-type: none"> 11b: 16dBm~18dBm 11g: 14dBm~16dBm 11n: 11dBm~13dBm 	<ul style="list-style-type: none"> 12V DC x 1A
Memory	Operating Conditions	Accessory
<ul style="list-style-type: none"> 8MB flash 64MB SDRAM 	<ul style="list-style-type: none"> 0~40°C Humidity: 20~80% RH (non-condensing) 	<ul style="list-style-type: none"> Flat wall-mount kit x 1 Tilt wall-mount kit x 1
Dimensions	Weight	Certifications
<ul style="list-style-type: none"> 95 x 40 x 30 mm 	<ul style="list-style-type: none"> 75g 	<ul style="list-style-type: none"> FCC, CE

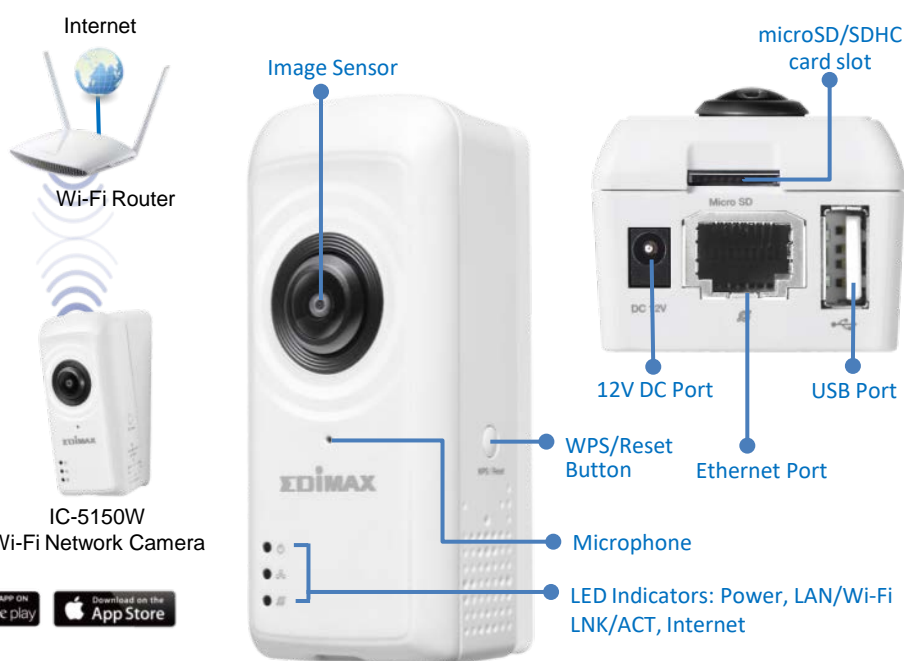
APPLICATION DIAGRAM



Free App


 IC-5150W
 Wi-Fi Network Camera

HARDWARE INTERFACE



*Actual viewing resolution and frame rate of network cameras depend on connection speed.

Maximum performance, actual data rates, and coverage will vary depending on network conditions and environmental factors. Product specifications and design are subject to change without notice.

Copyright © 2017 Edimax Technology Co. Ltd. All rights reserved.