

EW-7822ULC / UTC

Quick Installation Guide

08-2021 / v1.5

Edimax Technology Co., Ltd.

No. 278, Xinhua 1st Rd., Neihu Dist., Taipei City, Taiwan

Email: support@edimax.com.tw

Edimax Technology Europe B.V.

Fijenhof 2, 5652 AE Eindhoven, The Netherlands

Email: support@edimax.nl

Edimax Computer Company

530 Technology Drive Suite 100, Irvine, CA 92618, USA

Email: support@edimax.us

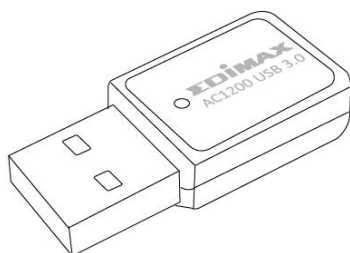
I. Product Information

I-1. Package Contents



EW-7822ULC

or



EW-7822UTC



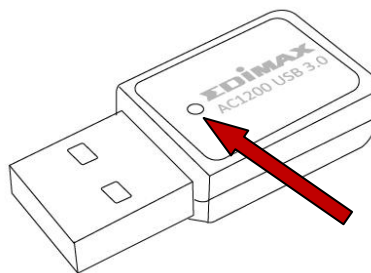
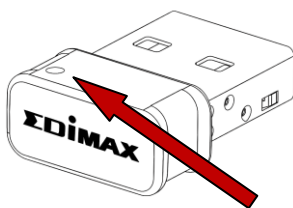
QIG



CD

I-2. LED Status

LED	LED Status	Description
WLAN	On	Wireless activity: transmitting or receiving data.
	Off	No wireless activity.



I-3. System Requirements

- Windows 7/8/8.1~, Mac OS X 10.7~, Linux
- USB 2.0 Port
- Hard Disk: 100MB
- CD-ROM Drive

I-4. Safety

In order to ensure the safe operation of the device and its users, please read and act in accordance with the following safety instructions.

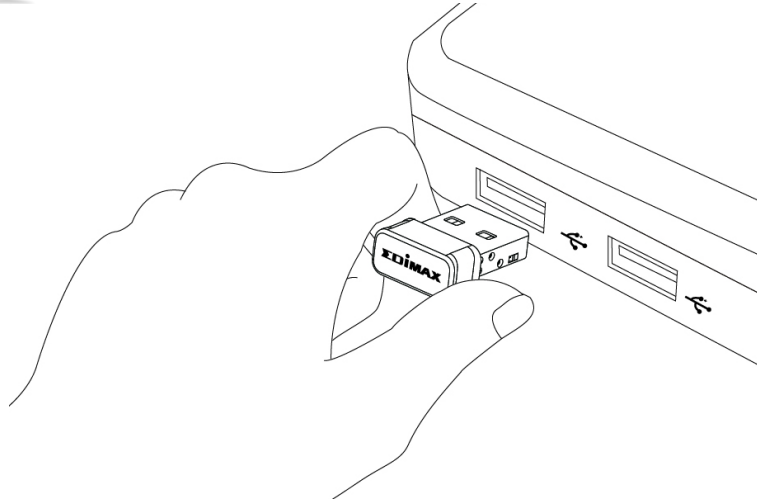
- 1.** The wireless adapter is designed for indoor use only; do not place the wireless adapter outdoors.
- 2.** Do not place the wireless adapter in or near hot/humid places, such as a kitchen or bathroom.
- 3.** The wireless adapter contains small parts which are a danger to small children under 3 years old. Please keep the wireless adapter out of reach of children.
- 4.** There are no user-serviceable parts inside the wireless adapter. If you experience problems with the wireless adapter, please contact your dealer of purchase and ask for help.
- 5.** The wireless adapter is an electrical device and as such, if it becomes wet for any reason, stop using it immediately. Contact an experienced electrical technician for further help.

II. Installation

1. Switch on your computer and insert the USB adapter into an available USB port of your computer.



Never use force to insert the USB adapter.



2. Insert the included CD-ROM into the CD drive of your computer.



The setup wizard is also available for download from the Edimax website.

3. For **Windows** users the setup wizard will open. For **Mac** users the CD's "Mac" folder will open.



If the CD doesn't auto-run or if you downloaded the setup wizard, please browse to the "Autorun" or "Mac" folder of the CD for Windows or Mac users respectively.

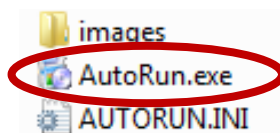
4. Please follow the instructions in the appropriate chapter for your operating system.

III. Windows

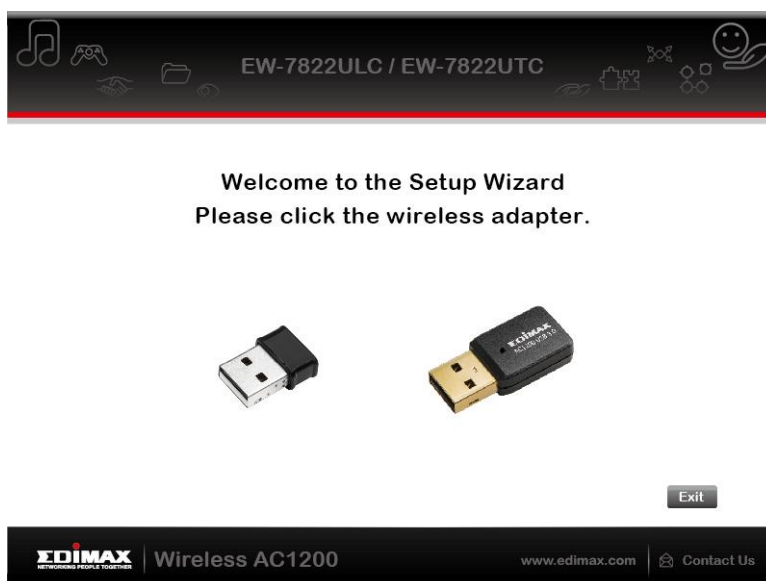
III-1. Driver Installation



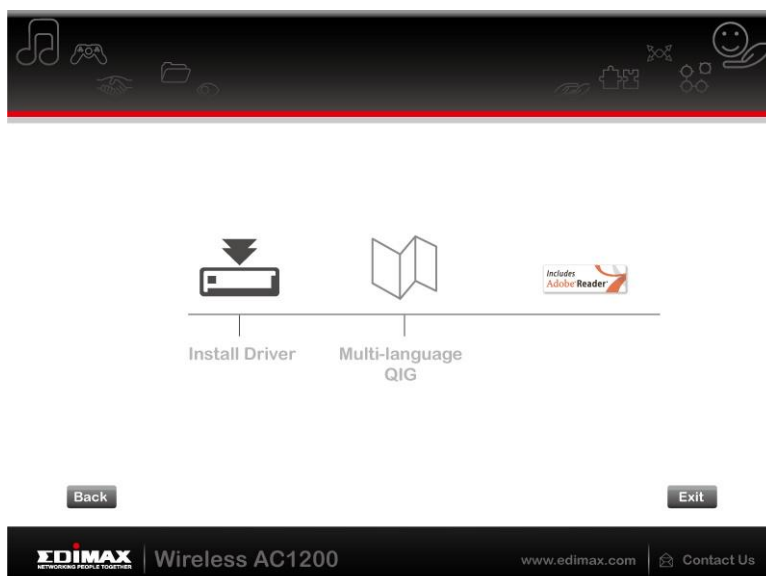
If the CD didn't auto-run, please open the "Autorun.exe" file to start the setup wizard.



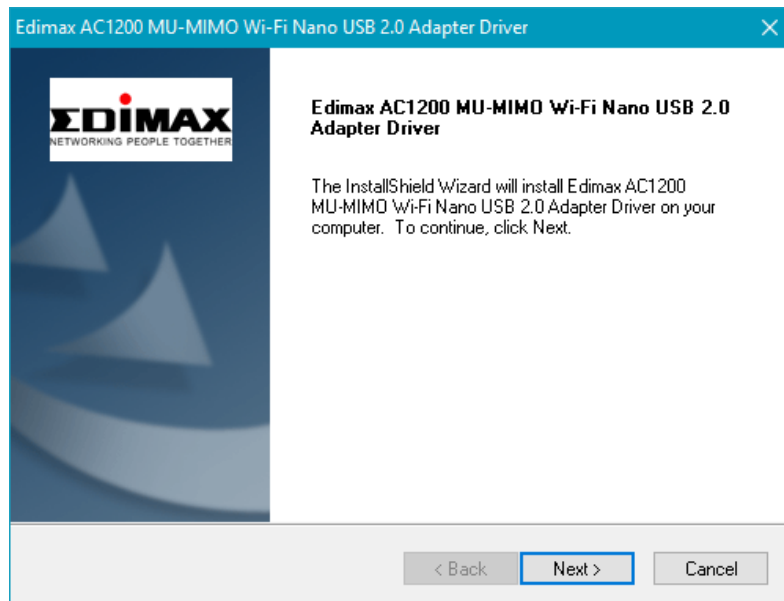
1. Click the wireless USB adapter to continue.



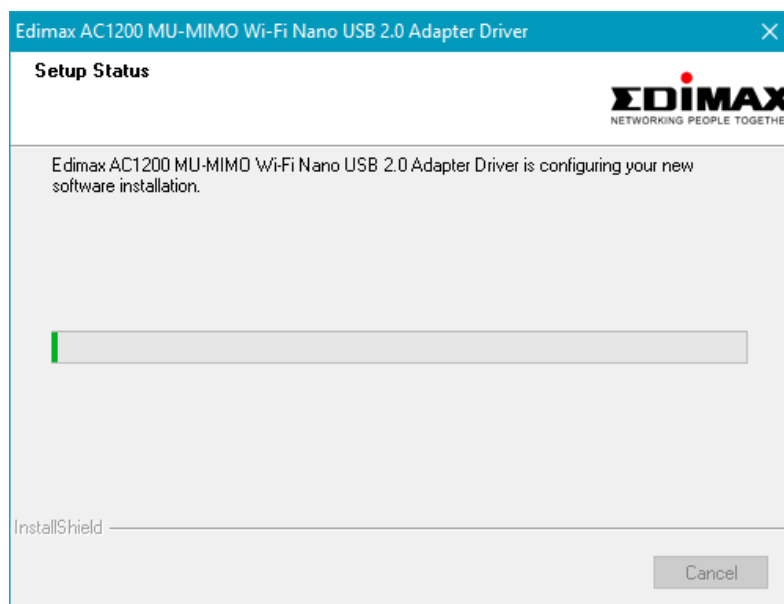
2. Click "Install Driver" to continue.



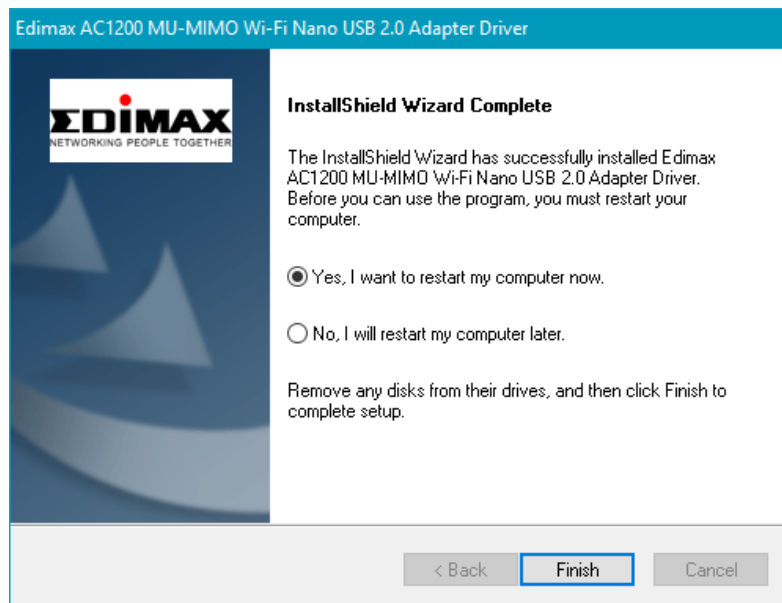
3. Click “Next” to continue.



4. Please wait while the driver is installing.



5. You need to restart your computer before using the wireless adapter. Choose whether to restart your computer now or later, and click “Finish”.



6. Click “Exit” to close the setup wizard.



The multi-language QIG is also included on the CD-ROM. To open it click “Multi-language QIG”.

7. Please disable any other wireless adapters as described in **V. Disabling Network Adapters**. Then, Windows users can connect to an available Wi-Fi network as usual. For guidance on doing so, please refer to **VI. Using The Adapter**.

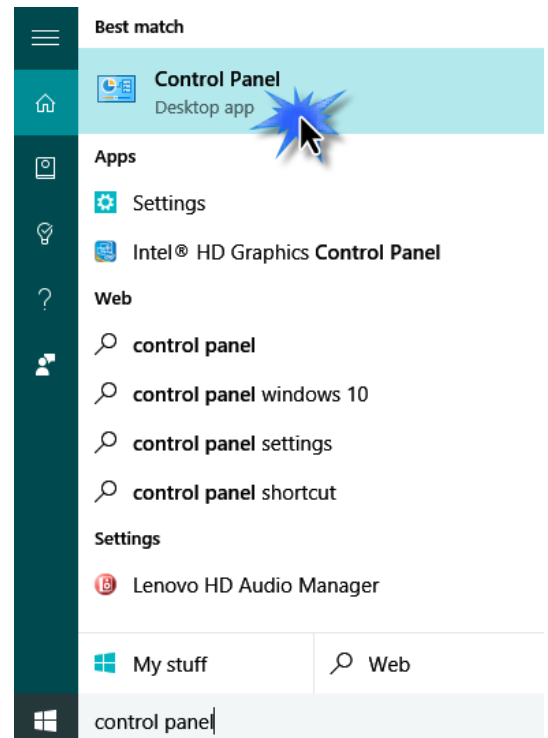
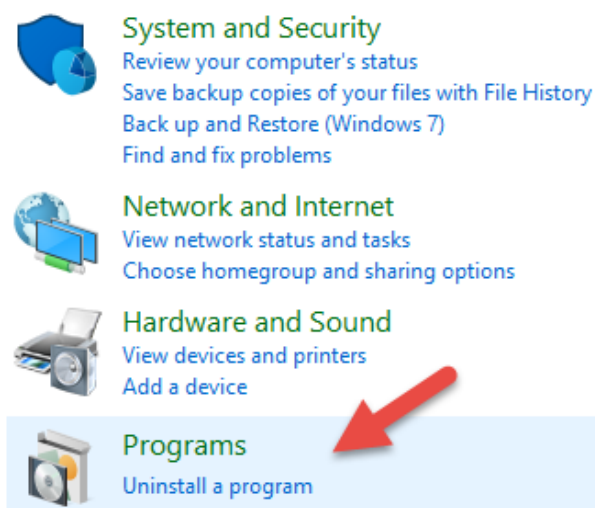
III-2. Driver Uninstallation

To uninstall drivers for your adapter, use the **Windows Control Panel** built-in **Programs and Features, Uninstall a Program** or **Add or Remove Programs** feature. An example is shown below:

III-2-1. Windows 7, 8.1 & 10

1. Open Control Panel using the Start menu or Search function.
2. Select **Uninstall a program** under the **Programs** category.

Adjust your computer's settings



3. Select **Edimax AC1200** (or similar) and click **Uninstall**.

Organise ▾ Uninstall				
Name	Publisher	Installed On	Size	Version
Edimax AC1200 MU-MIMO Wi-Fi Nano USB 2.0 Adap...	Edimax Technology Co., Ltd.	26/08/2016	110 MB	1.00.0218.1
Slack	Slack Technologies	26/08/2016	69.5 MB	2.1.1
Spotify	Spotify AB	26/08/2016		1.0.36.124.g1cba1920
µTorrent	BitTorrent Inc.	25/08/2016		3.4.8.42449
Microsoft Office 365 Small Business Premium - en-us	Microsoft Corporation	14/08/2016	996 MB	16.0.7070.2033
HWiNFO64 Version 5.34	Martin Malik - REALiX	09/08/2016	3.33 MB	5.34
CPUID HWMonitor 1.29		09/08/2016	2.96 MB	

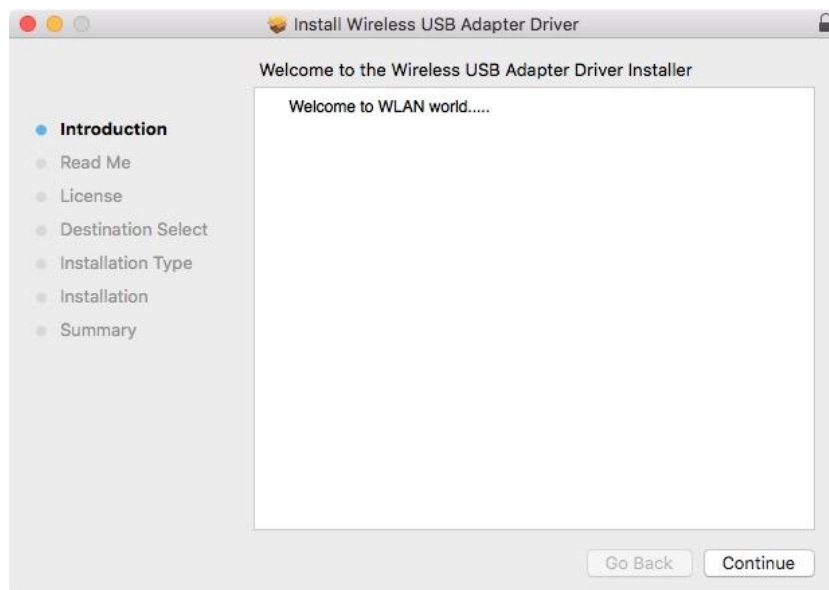
IV. Mac OS

IV-1. Driver Installation

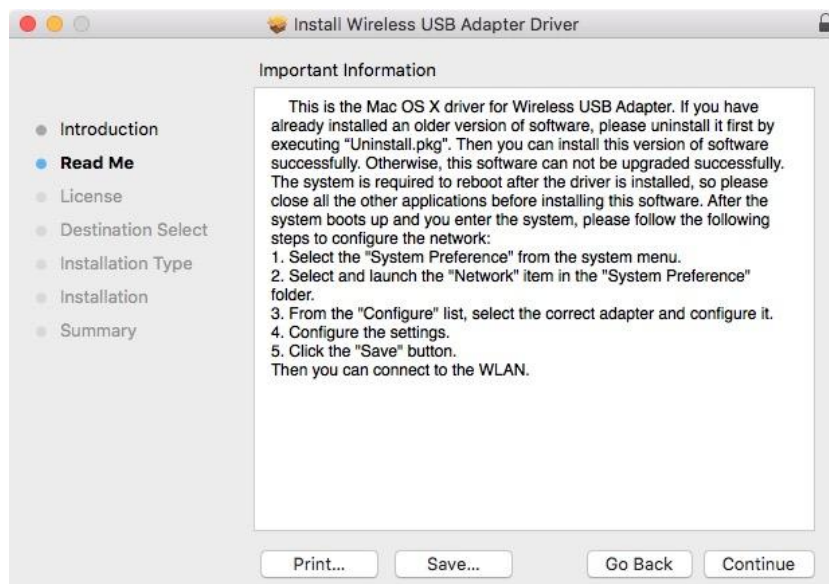
1. Open the “RTLWLANU_MacOS..” (or similar) folder and double click the “Installer.pkg” file to open the driver installation wizard.



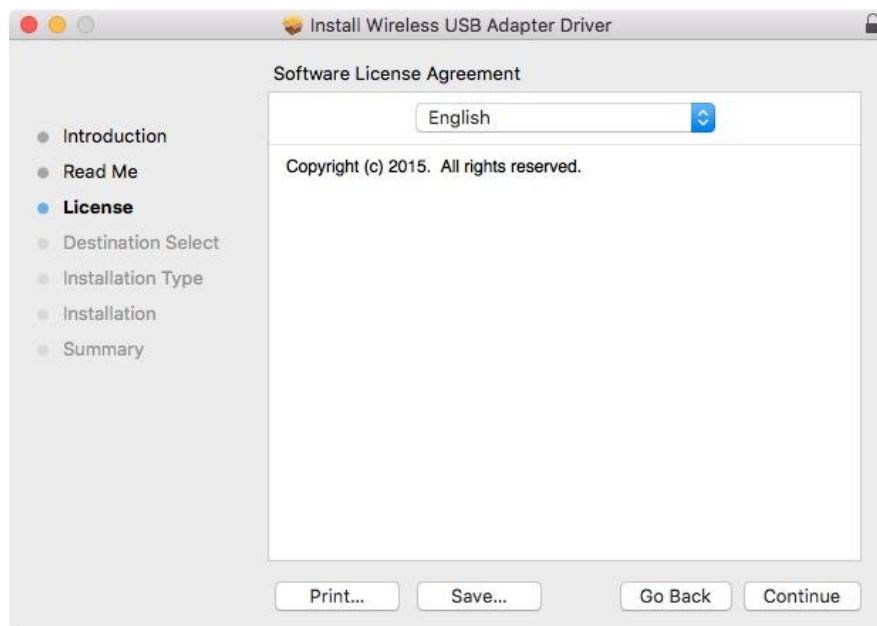
2. Click “Continue” to proceed to the next step.



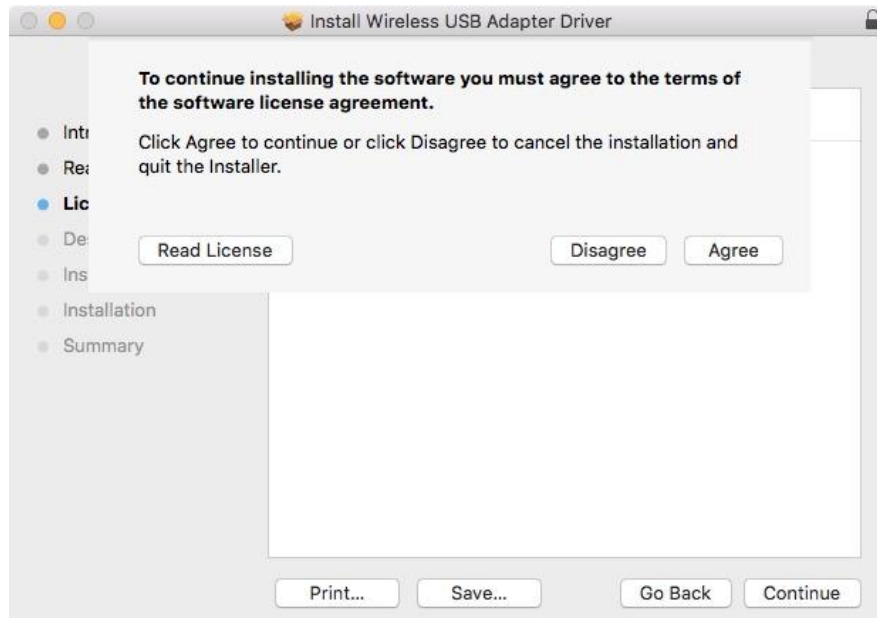
3. The next screen displays important information, please read it carefully. Click “Continue” when you are ready to continue.



4. Select a language (the default language is English) and click “Continue” to install the driver.



5. To read the software license click “Read License” and then click “Agree” to confirm you agree to the terms. You must agree to the terms to continue installing the software.



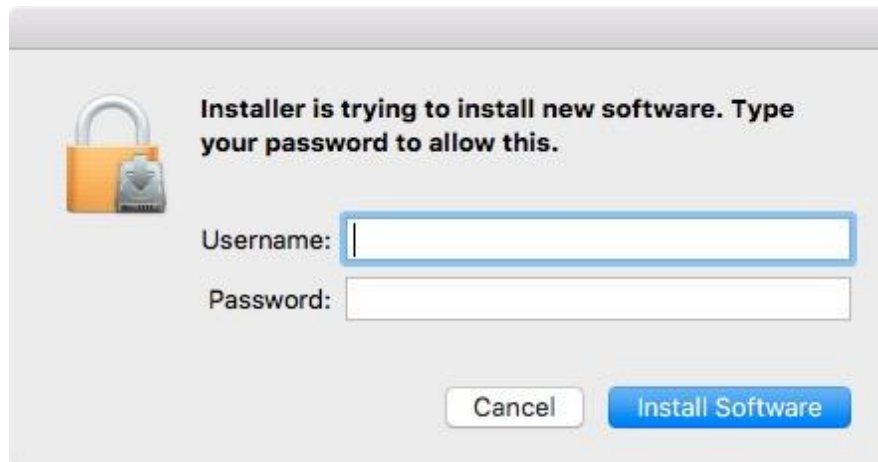
6. If prompted, select which user to install the software for and click “Continue”.



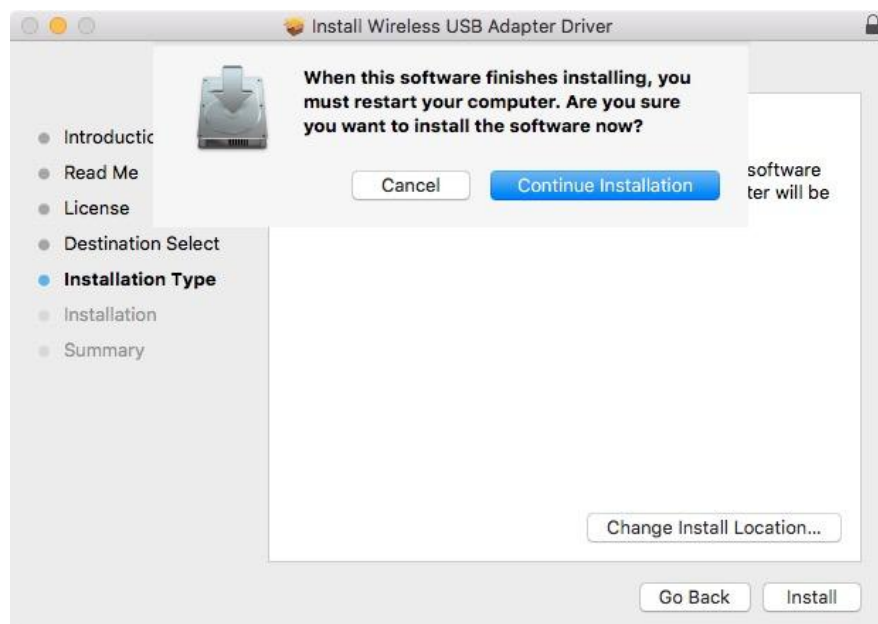
7. Click “Install” to install the driver.



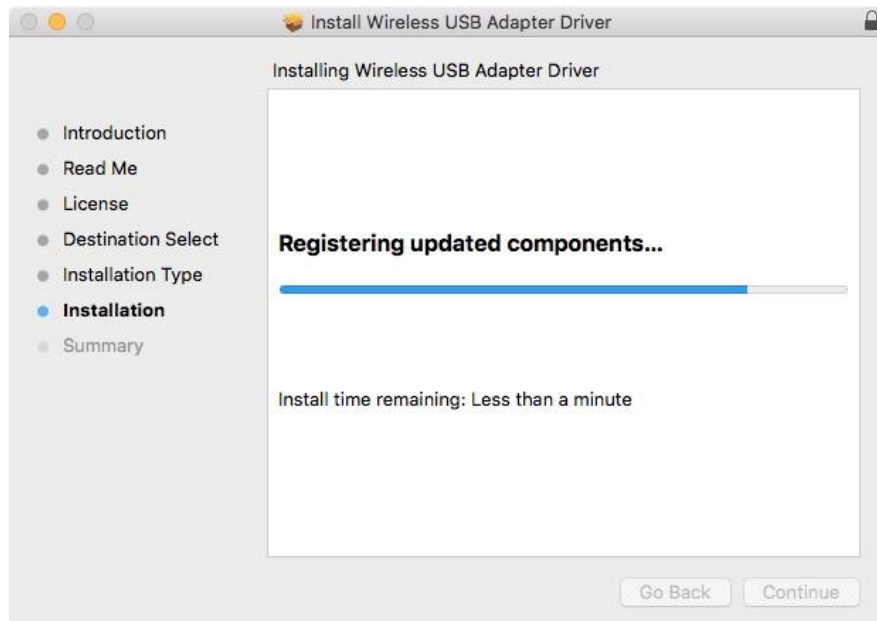
8. You may be prompted to enter your system/administrative password before the installation can begin. Enter your password and click “Install Software”.



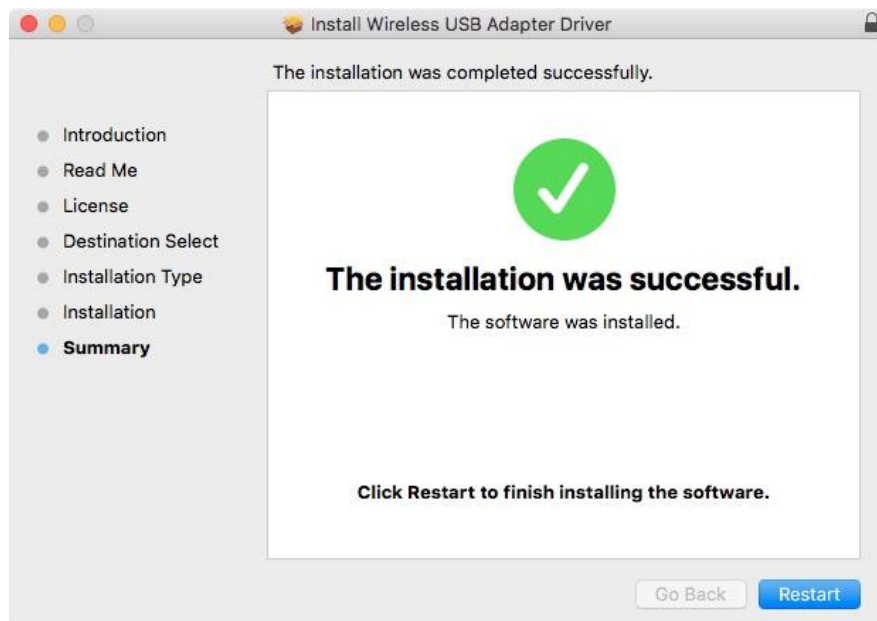
9. You will be prompted that you must restart your computer when the installation is complete. Click “Continue Installation” to proceed.



10. Please wait while the driver is installing.



11. When the installation is complete, you will see the following screen informing you that “The installation was successful”. Click “Restart” to restart your computer.



12. Next, please disable any other wireless adapters as described in **V. Disabling Network Adapters**. Then you can connect to a Wi-Fi network as described in **VI. Using The Adapter**.

IV-2. Driver Uninstallation

1. Open the “RTLWLANU_MacOS..” (or similar) folder.



2. Double click the “Uninstall.pkg” file and follow the on-screen instructions.



V. Disabling Network Adapters

To ensure that your USB wireless adapter can function correctly, it is recommended that you disable any other existing wireless network adapters installed on your computer. If you are unsure how to do so, you can refer to the user manual for your computer, or follow the guidance below.

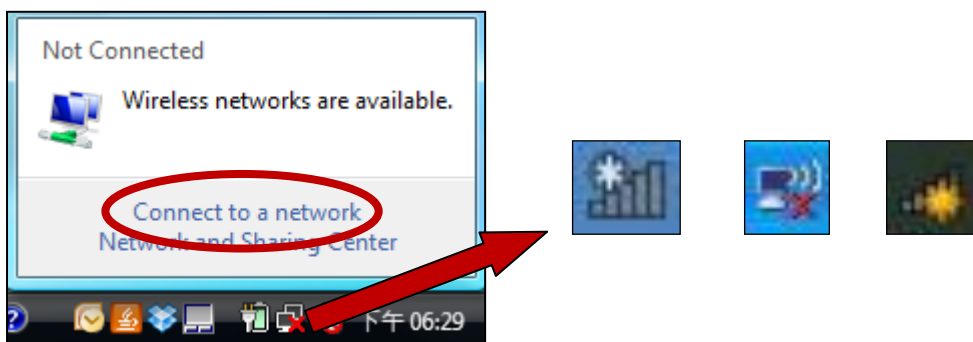
VI. Using The Adapter

After you have installed the driver and if necessary disabled other wireless adapters Windows users can connect to a Wi-Fi network as usual. Mac users need to connect to a Wi-Fi network using the included utility, as described in VI-2. Mac

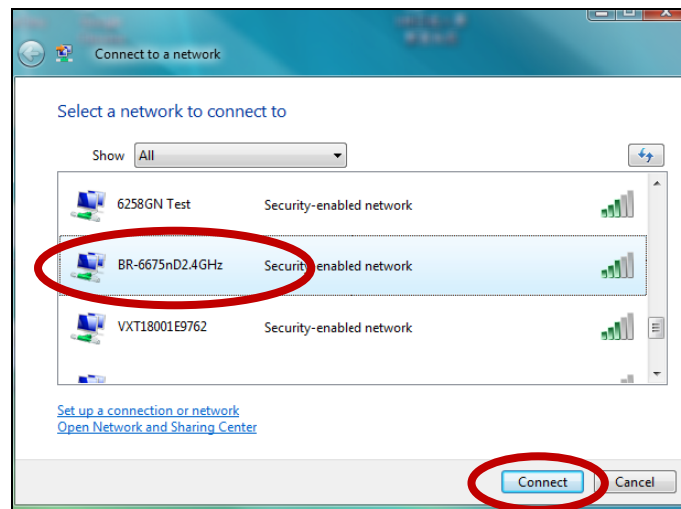
VI-1. Windows

Below is an example of how to connect - the process may vary according to your Windows edition.

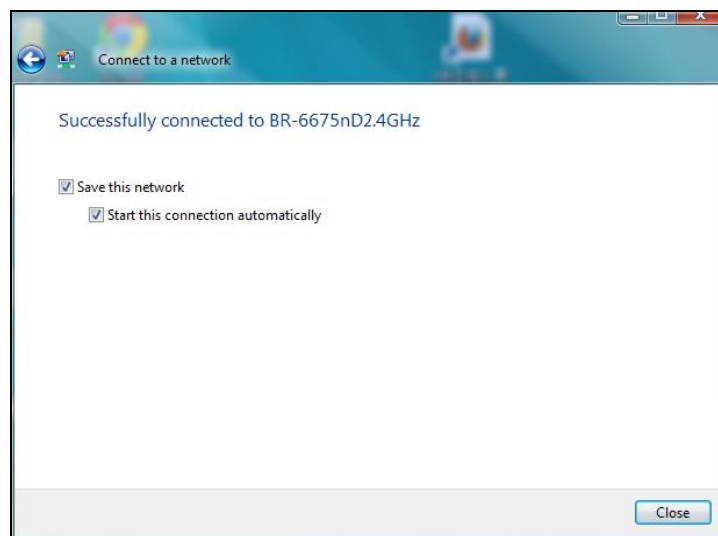
1. Click the network icon (examples below) in the system tray and select “Connect to a network”.



- 2.** Search for the SSID of your Wi-Fi network and then click “Connect”. If you set a password for your network, you will then be prompted to enter it.



- 3.** After correctly entering your password, you will be successfully connected to your Wi-Fi network.



WPS (Wi-Fi Protected Setup) is a simple, alternative way to establish connections between WPS compatible devices. Most modern wireless network devices feature a built-in WPS button, which activates WPS on that device. When WPS is activated in the correct manner and at the correct time for two compatible devices, they will automatically connect to each other.

WPS can be activated via the Wi-Fi utility, which has the same effect as physically pushing the WPS button (known as PBC or “push button configuration”).

PIN code WPS is an additional variation of WPS which can be activated from a device’s web user interface, and includes the use of a PIN code between the two devices for identification and verification.

COPYRIGHT

Copyright © Edimax Technology Co., Ltd. all rights reserved. No part of this publication may be reproduced, transmitted, transcribed, stored in a retrieval system, or translated into any language or computer language, in any form or by any means, electronic, mechanical, magnetic, optical, chemical, manual or otherwise, without the prior written permission from Edimax Technology Co., Ltd.

Edimax Technology Co., Ltd. makes no representations or warranties, either expressed or implied, with respect to the contents hereof and specifically disclaims any warranties, merchantability, or fitness for any particular purpose. Any software described in this manual is sold or licensed as is. Should the programs prove defective following their purchase, the buyer (and not this company, its distributor, or its dealer) assumes the entire cost of all necessary servicing, repair, and any incidental or consequential damages resulting from any defect in the software. Edimax Technology Co., Ltd. reserves the right to revise this publication and to make changes from time to time in the contents hereof without the obligation to notify any person of such revision or changes.

The product you have purchased and the setup screen may appear slightly different from those shown in this QIG. The software and specifications are subject to change without notice. Please visit our website www.edimax.com for updates. All brand and product names mentioned in this manual are trademarks and/or registered trademarks of their respective holders.

	AT	BE	BG	HR	CY	CZ	DK	
	EE	FI	FR	DE	EL	HU	IE	
	IT	LV	LT	LU	MT	NL	PL	
	PT	RO	SK	SI	ES	SE	UK	UK(NI)

The device is restricted to indoor use only when operating in the 5150 to 5350 MHz frequency range.

Federal Communication Commission Interference Statement

This equipment has been tested and found to comply with the limits for a Class B digital device, pursuant to Part 15 of FCC Rules. These limits are designed to provide reasonable protection against harmful interference in a residential installation. This equipment generates, uses, and can radiate radio frequency energy and, if not installed and used in accordance with the instructions, may cause harmful interference to radio communications. However, there is no guarantee that interference will not occur in a particular installation. If this equipment does cause harmful interference to radio or television reception, which can be determined by turning the equipment off and on, the user is encouraged to try to correct the interference by one or more of the following measures:

1. Reorient or relocate the receiving antenna.
2. Increase the separation between the equipment and receiver.
3. Connect the equipment into an outlet on a circuit different from that to which the receiver is connected.
4. Consult the dealer or an experienced radio technician for help.

FCC Caution

This device and its antenna must not be co-located or operating in conjunction with any other antenna or transmitter. This device complies with Part 15 of the FCC Rules. Operation is subject to the following two conditions: (1) this device may not cause harmful interference, and (2) this device must accept any interference received, including interference that may cause undesired operation. Any changes or modifications not expressly approved by the party responsible for compliance could void the authority to operate equipment.

Federal Communications Commission (FCC) Radiation Exposure Statement

This equipment complies with FCC RF radiation exposure limits set forth for an uncontrolled environment. This device was tested for typical lap held operations with the device contacted directly to the human body to the back side of the notebook computer. To maintain compliance with FCC RF exposure compliance requirements, avoid direct contact to the transmitting antenna during transmitting.

Federal Communications Commission (FCC) RF Exposure Requirements

This EUT is compliance with SAR for general population/uncontrolled exposure limits in ANSI/IEEE C95.1-1999 and had been tested in accordance with the measurement methods and procedures specified in OET Bulletin 65 Supplement C. The equipment version marketed in US is restricted to usage of the channels 1-11 only. This equipment is restricted to **indoor** use when operated in the 5.15 to 5.25 GHz frequency range.

RED Compliance Statement

Compliance with 2014/53/EU Radio Equipment Directive (RED)

In accordance with Article 10.8(a) and 10.8(b) of the RED, the following table provides information on the frequency bands used and the maximum RF transmit power of the product for sale in the EU:

Frequency range (MHz)	Max. Transmit Power (dBm)
2412-2472	19.83 dBm
5150-5240	20.58 dBm

A simplified DoC shall be provided as follows: Article 10(9)

Hereby, Edimax Technology Co., Ltd. declares that the radio equipment type **AC1200 Wi-Fi Dual-Band USB Adapter** is in compliance with Directive 2014/53/EU

The full text of the EU declaration of conformity is available at the following internet address: <http://www.edimax.com/edimax/global/>

Safety

This equipment is designed with the utmost care for the safety of those who install and use it. However, special attention must be paid to the dangers of electric shock and static electricity when working with electrical equipment. All guidelines of this and of the computer manufacture must therefore be allowed at all times to ensure the safe use of the equipment.

EU Countries Intended for Use The ETSI version of this device is intended for home and office use in Austria, Belgium, Bulgaria, Cyprus, Czech, Denmark, Estonia, Finland, France, Germany, Greece, Hungary, Ireland, Italy, Latvia, Lithuania, Luxembourg, Malta, Netherlands, Poland, Portugal, Romania, Slovakia, Slovenia, Spain, Sweden, Turkey, and United Kingdom. The ETSI version of this device is also authorized for use in EFTA member states: Iceland, Liechtenstein, Norway, and Switzerland.

EU Countries Not Intended for Use

None

EU Declaration of Conformity

- English:** This equipment is in compliance with the essential requirements and other relevant provisions of Directive 2014/53/EU, 2014/35/EU.
- Français:** Cet équipement est conforme aux exigences essentielles et autres dispositions de la directive 2014/53/EU, 2014/35/EU.
- Čeština:** Toto zařízení je v souladu se základními požadavky a ostatními příslušnými ustanoveními směrnic 2014/53/EU, 2014/35/EU.
- Polski:** Urządzenie jest zgodne z ogólnymi wymaganiami oraz szczególnymi warunkami określonymi Dyrektywą UE 2014/53/EU, 2014/35/EU.
- Română:** Acest echipament este în conformitate cu cerințele esențiale și alte prevederi relevante ale Directivei 2014/53/UE, 2014/35/UE.
- Русский:** Это оборудование соответствует основным требованиям и положениям Директивы 2014/53/EU, 2014/35/EU.
- Magyar:** Ez a berendezés megfelel az alapvető követelményeknek és más vonatkozó irányelveknek (2014/53/EU, 2014/35/EU).
- Türkçe:** Bu cihaz 2014/53/EU, 2014/35/EU direktifleri zorunlu istekler ve diğer hükümlerle ile uyumludur.
- Українська:** Обладнання відповідає вимогам і умовам директиви 2014/53/EU, 2014/35/EU.
- Slovenčina:** Toto zariadenie spĺňa základné požiadavky a ďalšie príslušné ustanovenia smerníc 2014/53/EU, 2014/35/EU.
- Deutsch:** Dieses Gerät erfüllt die Voraussetzungen gemäß den Richtlinien 2014/53/EU, 2014/35/EU.
- Español:** El presente equipo cumple los requisitos esenciales de la Directiva 2014/53/EU, 2014/35/EU.
- Italiano:** Questo apparecchio è conforme ai requisiti essenziali e alle altre disposizioni applicabili della Direttiva 2014/53/EU, 2014/35/UE.
- Nederlands:** Dit apparaat voldoet aan de essentiële eisen en andere van toepassing zijnde bepalingen van richtlijn 2014/53/EU, 2014/35/EU.
- Português:** Este equipamento cumpre os requisitos essenciais da Directiva 2014/53/EU, 2014/35/EU.
- Norsk:** Dette utstyret er i samsvar med de viktigste kravene og andre relevante regler i Direktiv 2014/53/EU, 2014/35/EU.
- Svenska:** Denna utrustning är i överensstämmelse med de väsentliga kraven och övriga relevanta bestämmelser i direktiv 2014/53/EU, 2014/35/EU.
- Dansk:** Dette udstyr er i overensstemmelse med de væsentligste krav og andre relevante forordninger i direktiv 2014/53/EU, 2014/35/EU.
- suomen kieli:** Tämä laite täyttää direktiivien 2014/53/EU, 2014/35/EU. oleelliset vaatimukset ja muut asiaankuuluvat määräykset.

FOR USE IN

AT	BE	BG	CZ	DK	DE
EE	IE	EL	ES	FR	HR
IT	CY	LV	LT	LU	HU
MT	NL	PL	PT	RO	SI
SK	FI	SE	UK	UK(NI)	TR
IS	LI	NO	CH	RU	UA



WEEE Directive & Product Disposal



At the end of its serviceable life, this product should not be treated as household or general waste. It should be handed over to the applicable collection point for the recycling of electrical and electronic equipment, or returned to the supplier for disposal.

Declaration of Conformity

We, Edimax Technology Co., Ltd., declare under our sole responsibility, that the equipment described below complies with the requirements of the European Radio Equipment directives.

Equipment: AC1200 Wi-Fi Dual-Band USB Adapter
Model No.: EW-7822ULC/EW-7822UTC

The following European standards for essential requirements have been followed:

Directives 2014/53/EU

Spectrum : EN 300 328 V2.2.2 (2019-07)
EN 301 893 V2.1.1 (2017-05)
EMC : EN 301 489-1 V2.2.0 (2017-03), Class B
EN 301 489-17 V3.2.0 (2017-03)
EMF : EN 62311:2008
Safety (LVD) : IEC 62368-1:2014 (2nd Edition) and/or EN 62368-1:2014+A11:2017

Edimax Technology Europe B.V.
Fijenhof 2,
5652 AE Eindhoven,
The Netherlands

Printed Name: David Huang
Title: Director
Edimax Technology Europe B.V.

a company of:
Edimax Technology Co., Ltd.
No. 278, Xinhua 1st Rd.,
Neihu Dist., Taipei City,
Taiwan



Date of Signature: Aug., 2021

Signature:

Printed Name:

Albert Chang

Title:

Director

Edimax Technology Co., Ltd.

Declaration of Conformity

We, Edimax Technology Co., Ltd., declare under our sole responsibility, that the equipment described below complies with the requirements of the United Kingdom Radio Equipment directives.

Equipment: 11ac Wireless Dual-Band Selectable USB Adapter
Model No.: EW-7822ULC

The following European standards for essential requirements have been followed:

Radio Equipment Regulations 2017 (S.I. 2017/1206)

Spectrum : EN 300 328 V2.2.2 (2019-07)
 EN 301 893 V2.1.1 (2017-05)
EMC : EN 301 489-1 V2.2.0 (2017-03), Class B
 EN 301 489-17 V3.2.0 (2017-03)
EMF : EN 62311:2008
Safety (LVD) : IEC 62368-1:2014 (2nd Edition) and/or EN 62368-1:2014+A11:2017

Edimax Technology Europe B.V.
Fijenhof 2,
5652 AE Eindhoven,
The Netherlands

Printed Name: David Huang
Title: Director
Edimax Technology Europe B.V.

a company of:
Edimax Technology Co., Ltd.
No. 278, Xinhua 1st Rd.,
Neihu Dist., Taipei City,
Taiwan



Date of Signature: Aug., 2021

Signature:

A handwritten signature in black ink, appearing to read 'Albert Chang', is written over a horizontal line.

Printed Name:

Albert Chang

Title:

Director

Edimax Technology Co., Ltd.