

# EW-7822UAC

## Quick Installation Guide

05-2021/v1.7

---

### **Edimax Technology Co., Ltd.**

No. 278, Xinhua 1st Rd., Neihu Dist., Taipei City, Taiwan

Email: [support@edimax.com.tw](mailto:support@edimax.com.tw)

---

### **Edimax Technology Europe B.V.**

Fijenhof 2, 5652 AE Eindhoven, The Netherlands

Email: [support@edimax.nl](mailto:support@edimax.nl)

---

### **Edimax Computer Company**

530 Technology Drive Suite 100, Irvine, CA 92618, USA

Email: [support@edimax.us](mailto:support@edimax.us)

<b>I. Product Information.....</b>	<b>1</b>
I-1. Package Contents .....	1
I-2. LED Status .....	1
I-3. System Requirements.....	1
I-4. Safety .....	2
<b>II. Installation.....</b>	<b>3</b>
<b>III. Windows.....</b>	<b>5</b>
III-1. Driver Installation .....	5
III-2. Driver Uninstallation.....	8
III-2-1. Windows XP/Vista/7 .....	8
III-2-2. Windows 8/8.1.....	8
<b>IV. Mac OS .....</b>	<b>9</b>
IV-1. Driver Installation .....	9
IV-2. Driver Uninstallation.....	15
<b>V. Linux .....</b>	<b>16</b>
V-1. Driver Installation .....	16
V-2. Driver Uninstallation.....	20
<b>VI. Disabling Network Adapters .....</b>	<b>21</b>
VI-1. Windows XP .....	21
VI-2. Windows Vista .....	22
VI-3. Windows 7 .....	22
VI-4. Windows 8/8.1.....	23
VI-5. Mac .....	24
VI-6. Linux.....	25
<b>VII. Using The Adapter.....</b>	<b>26</b>
VII-1. Windows .....	26
VII-2. Mac: Connect to a Wi-Fi network.....	28
VII-3. Mac: Wireless Utility.....	30
VII-3-1. Link Status .....	30
VII-3-2. Profiles .....	31
VII-3-3. Available Network.....	33
VII-3-4. WPS .....	34
VII-3-5. Information .....	37
VII-4. WPS Setup.....	38

## **Multi-Language Quick Installation Guide (QIG) on the CD**

**Čeština:** Českého průvodce rychlou instalací naleznete na přiloženém CD s ovladači.

**Deutsch:** Finden Sie bitte das deutsche S.A.L. beiliegend in der Treiber CD.

**Español:** Incluido en el CD el G.R.I. en Español.

**Français:** Veuillez trouver l'français G.I.R ci-joint dans le CD.

**Italiano:** Incluso nel CD il Q.I.G. in Italiano.

**Magyar:** A magyar telepítési útmutató megtalálható a mellékelt CD-n.

**Nederlands:** De nederlandse Q.I.G. treft u aan op de bijgesloten CD.

**Polski:** Skrócona instrukcja instalacji w języku polskim znajduje się na załączonej płycie CD.

**Português:** Incluído no CD o G.I.R. em Portugues.

**Русский:** Найдите Q.I.G. на русском языке на приложенном CD.

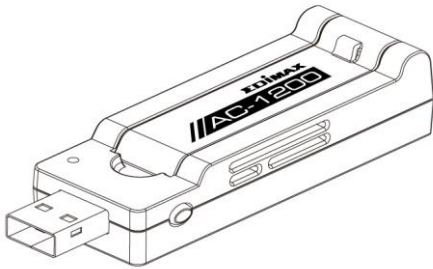
**Türkçe:** Ürün ile beraber gelen CD içinde Türkçe Hızlı Kurulum Kılavuzu'nu bulabilirsiniz.

**Українська:** Для швидкого налаштування Вашого пристрою, будь ласка, ознайомтесь з інструкцією на CD.

# I. Product Information

---

## I-1. Package Contents



**EW-7822UAC**



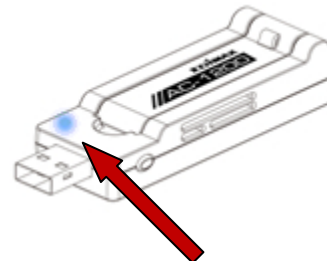
**QIG**



**CD-ROM**

## I-2. LED Status

LED	LED Status	Description
WLAN	On	Wireless activity: transmitting or receiving data.
	Off	No wireless activity.



**LED**

## I-3. System Requirements

- Windows XP/Vista/7/8/8.1~, Mac OS X 10.7~, Linux
- Minimum USB 2.0 Port (USB 3.0 recommended)
- Hard Disk: 100MB
- CD-ROM Drive

## **I-4. Safety**

In order to ensure the safe operation of the device and its users, please read and act in accordance with the following safety instructions.

- 1.** The wireless adapter is designed for indoor use only; do not place the wireless adapter outdoors.
- 2.** Do not place the wireless adapter in or near hot/humid places, such as a kitchen or bathroom.
- 3.** The wireless adapter contains small parts that are a danger to small children under 3 years old. Please keep the wireless adapter out of reach of children.
- 4.** Do not place the wireless adapter on paper, cloth, or other flammable materials. The wireless adapter will become hot during use.
- 5.** There are no user-serviceable parts inside the wireless adapter. If you experience problems with the wireless adapter, please contact your dealer of purchase and ask for help.
- 6.** The wireless adapter is an electrical device and as such, if it becomes wet for any reason, stop using it immediately. Contact an experienced electrical technician for further help.

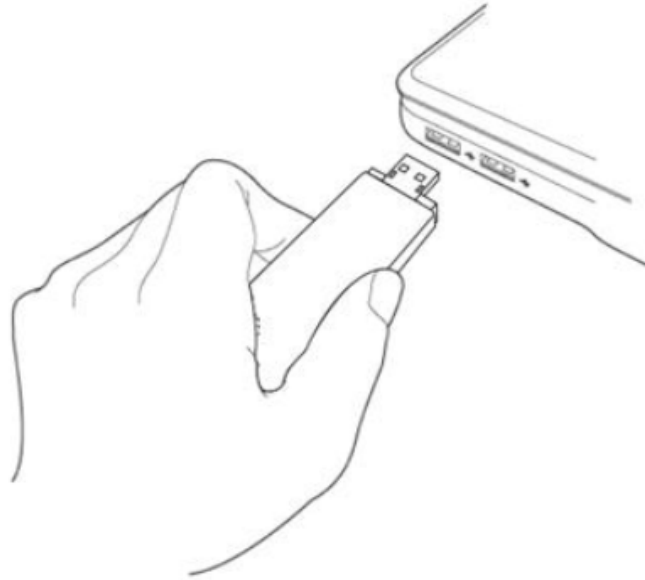
## II. Installation

---

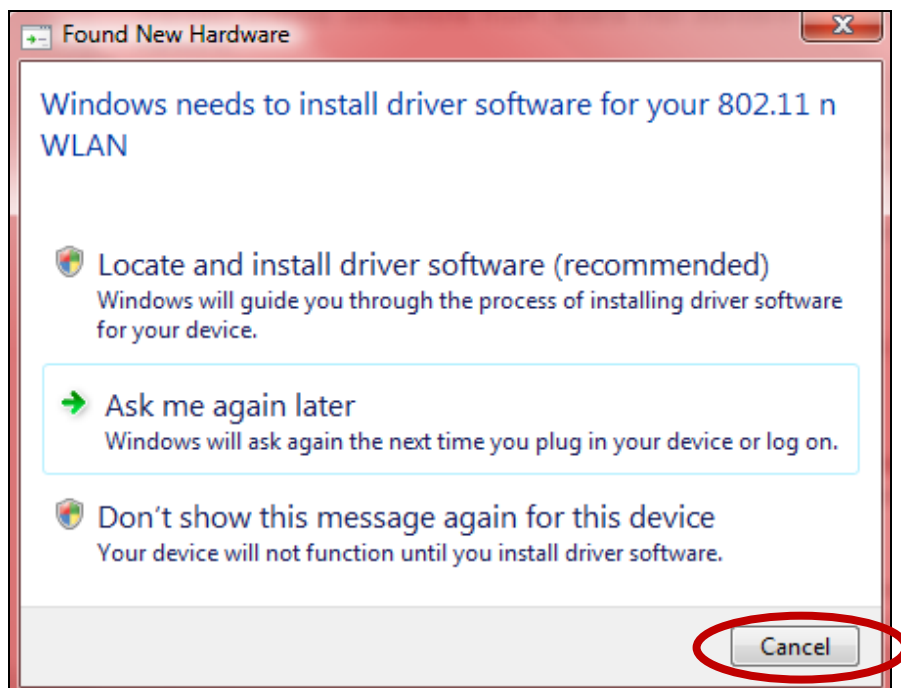
1. Switch on your computer and insert the USB adapter into an available USB port of your computer.



***Never use force to insert the USB adapter.***



2. If a Hardware Wizard/Driver Installation window opens as shown below, please click “Cancel” or “Close”.



3. Insert the included CD-ROM into the CD drive of your computer.
4. For **Windows** users the setup wizard will open. For **Mac** users the CD's "Mac" folder will open. **Linux** drivers are also included in the "Linux" folder.



*If the CD doesn't auto-run or if you downloaded the setup wizard, please browse to the "Autorun", "Mac" or "Linux" folder of the CD for Windows, Mac or Linux users respectively.*

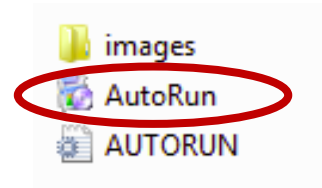
5. Please follow the instructions in the appropriate chapter for your operating system.

## III. Windows

### III-1. Driver Installation



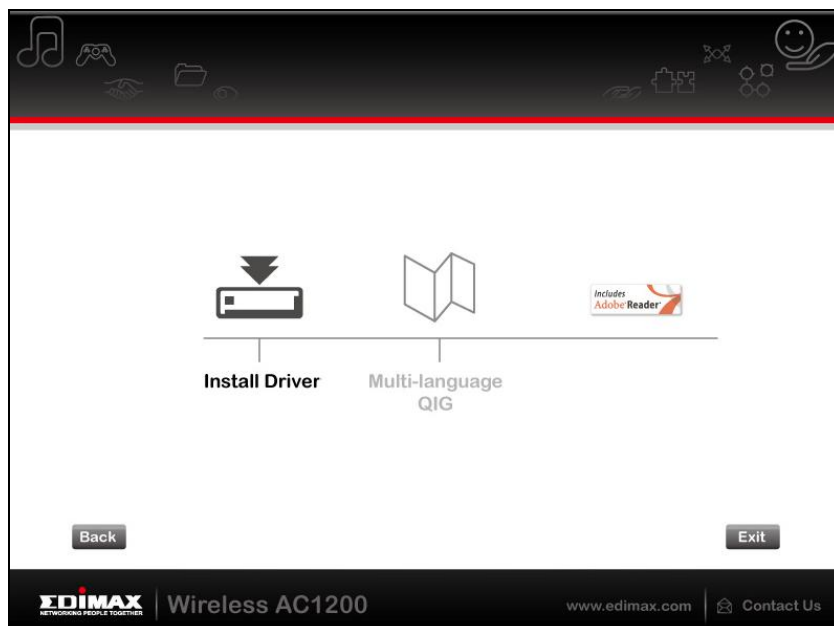
*If the CD didn't auto-run, please open the "AutoRun" folder and execute "Autorun.exe" file to start the setup wizard.*



1. Click the EW-7822UAC wireless USB adapter to continue.

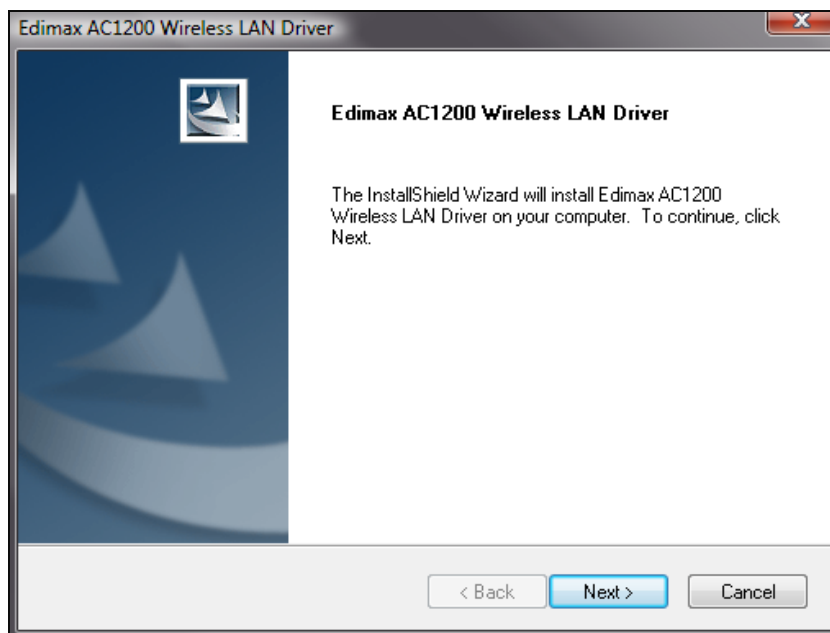


2. Click "Install Driver" to install the drivers for your EW-7822UAC.

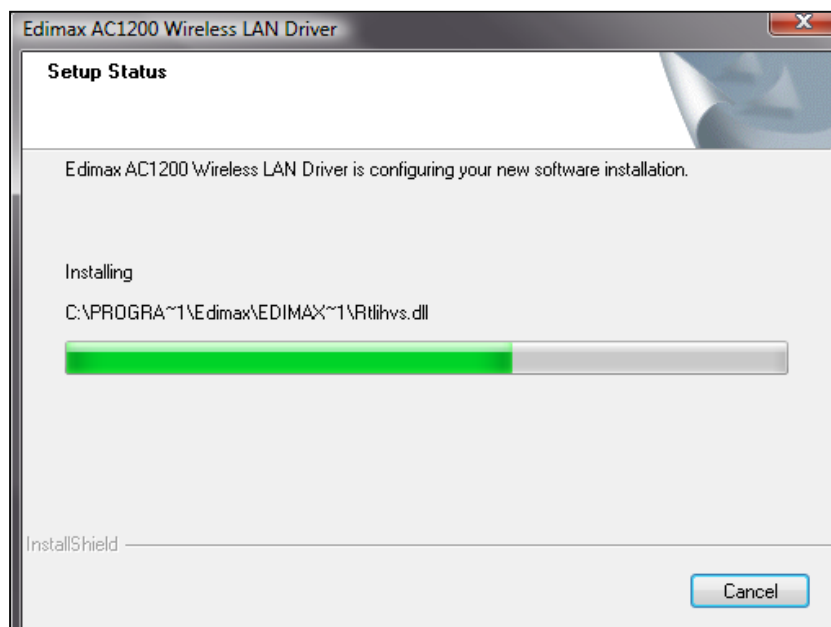




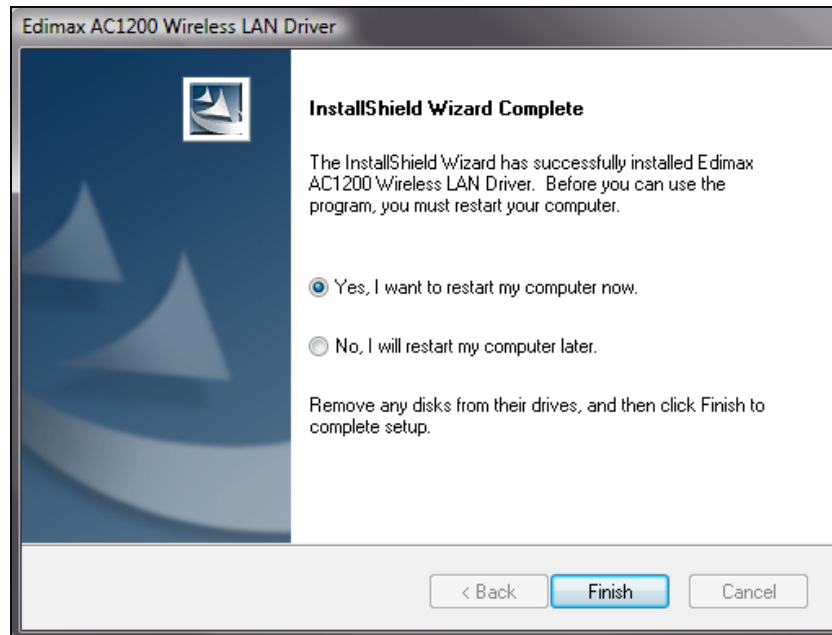
3. Please wait until the installation wizard is ready and then click “Next” to continue.



4. Please wait while the driver is installing.



- 5.** Before you can use the wireless adapter, you need to restart your computer. When the installation is complete you will be asked to choose whether you wish to restart your computer now or later. Click “Finish” to continue.

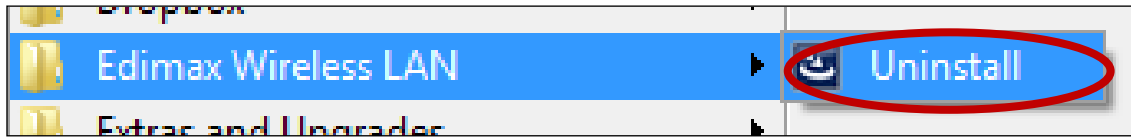


- 6.** After you restart your computer, your EW-7822UAC will be installed and fully functional. Please disable any other wireless adapters as described in **VI. Disabling Network Adapters**. Then, Windows users can connect to an available Wi-Fi network as usual. For guidance on doing so, please refer to **VII. Using The Adapter**.

## III-2. Driver Uninstallation

### III-2-1. Windows XP/Vista/7

1. Go to **Start > Programs > Edimax Wireless LAN > Uninstall**.



2. Follow the on screen instructions. An uninstall wizard will guide you through the process.

### III-2-2. Windows 8/8.1

1. Right click anywhere on the “Start” screen and then click the “All apps” icon in the bottom right corner.



2. Locate the Edimax Wireless LAN category, select “Uninstall” and follow the on-screen instructions.



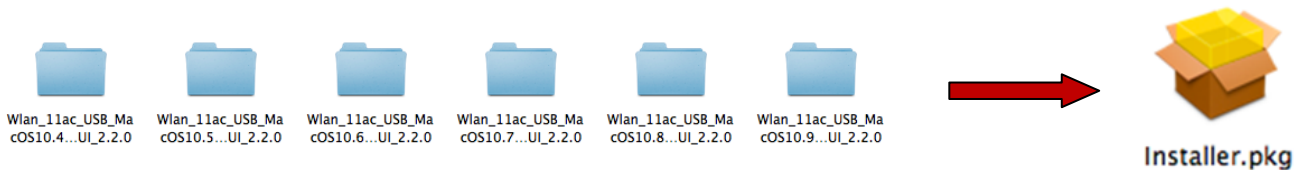
## IV. Mac OS

### IV-1. Driver Installation

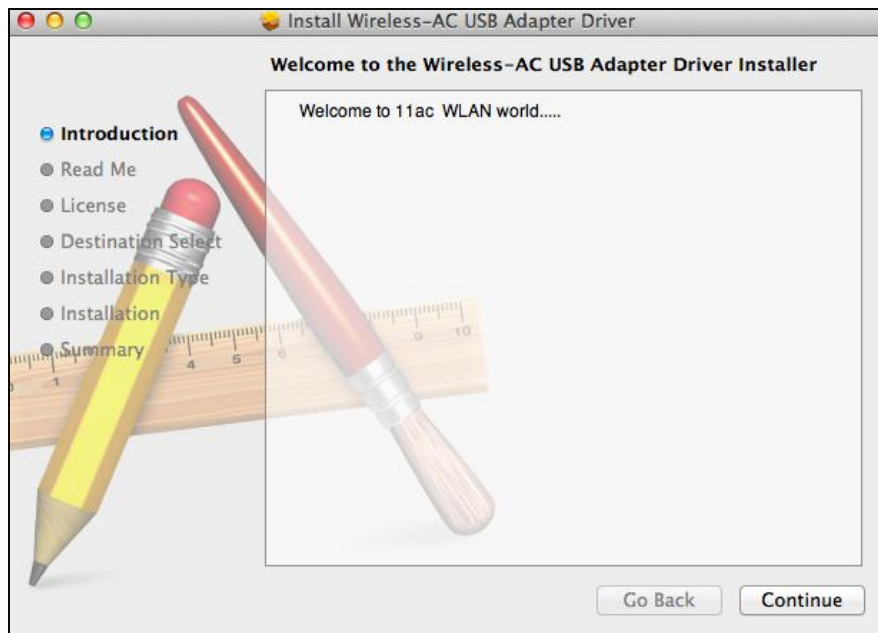


**Ensure you select the correct folder for your version of Mac OS. To check your version of Mac OS, click the Apple logo in the top left corner of your desktop and go to “About This Mac”.**

1. Open the “Wlan\_11ac\_USB\_MacOS10...” folder for your version of Mac OS X (10.4 - 10.9) and double click the “Installer.pkg” file to open the driver installation wizard.



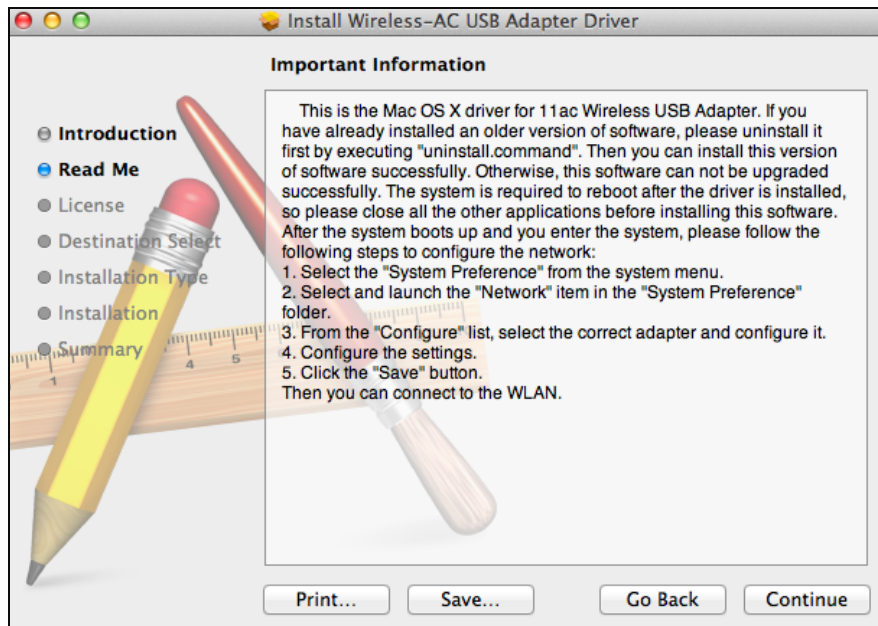
2. Click “Continue” to proceed to the next step.



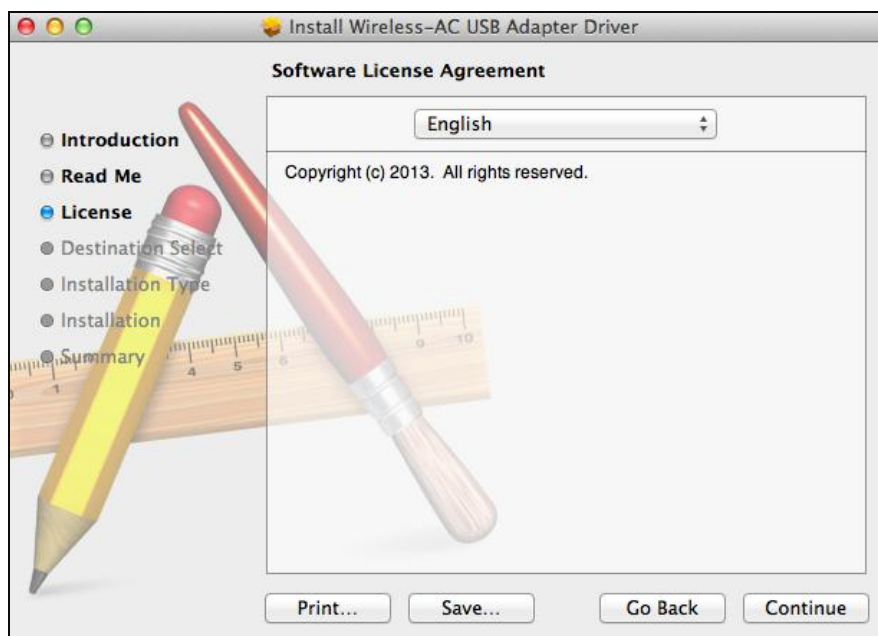
3. The next screen displays important information, please read it carefully (after the driver is installed, you need to enable the wireless adapter in “System Preferences → Network”. You can click “Print” or “Save” to print/save this information if you need or the instructions are repeated in **Step. 13**) Click “Continue” when you are ready to continue.



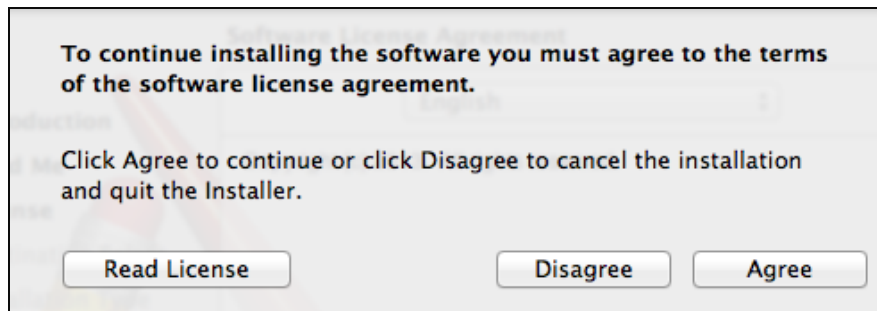
***If you have already have an older version of the software installed on your computer, please uninstall it before you continue.***



- 4.** Select a language (the default language is English) and click “Continue” to install the driver.



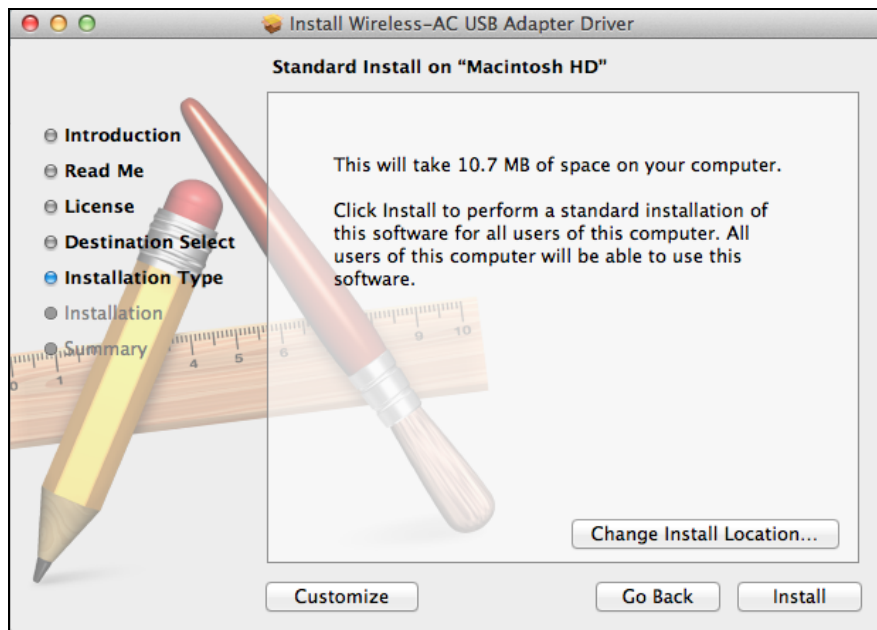
5. To read the software license click “Read License” and then click “Agree” to confirm you agree to the terms. You must agree to the terms to continue installing the software.



6. If prompted, select which user to install the software for and click “Continue”.



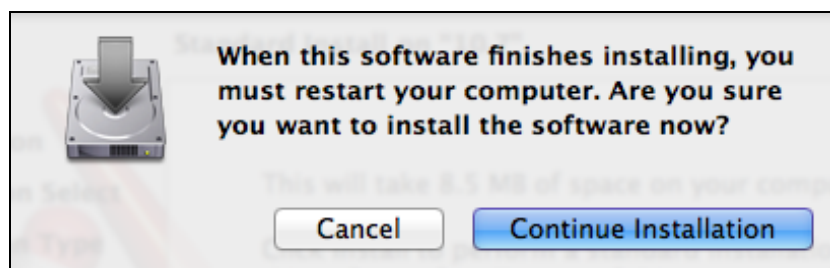
**7.** Click “Install” to install the driver.



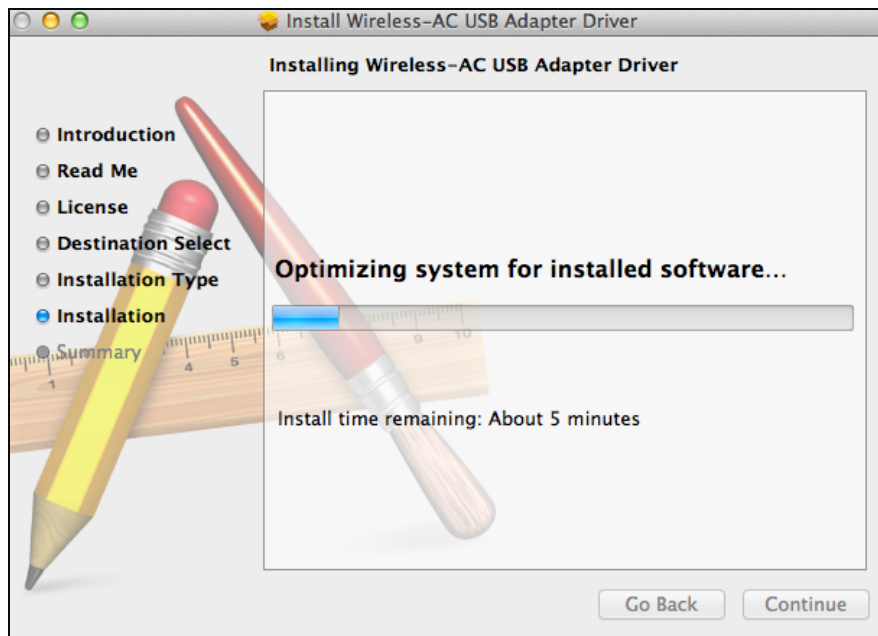
**8.** You may be prompted to enter your system/administrative password before the installation can begin. Enter your password and click “Install Software”.



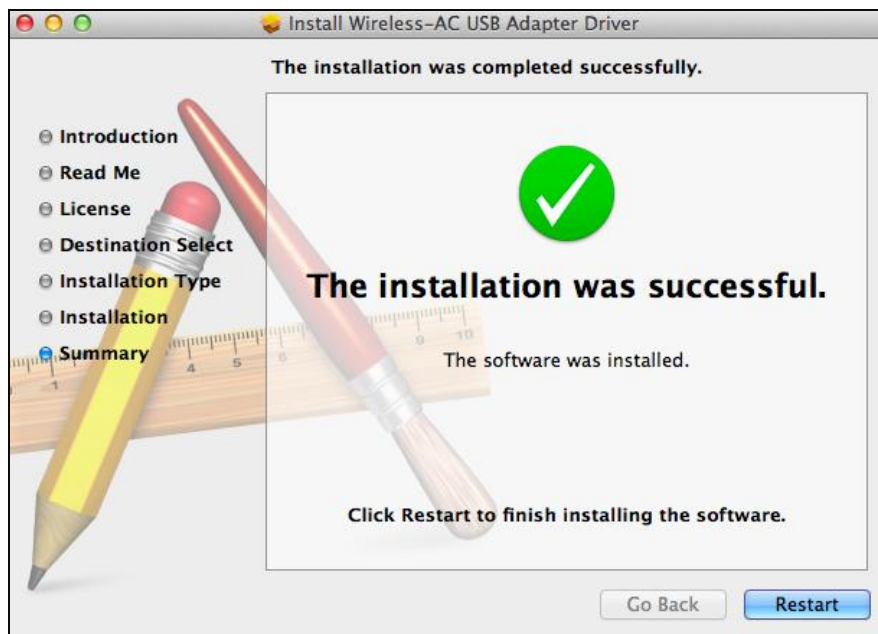
**9.** You will be prompted that you must restart your computer when the installation is complete. Click “Continue Installation” to proceed.



**10.** Please wait while the driver is installing.




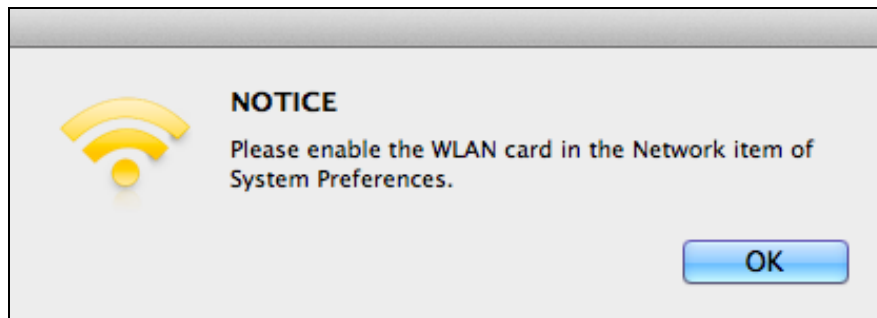
**11.** When the installation is complete, you will see the following screen informing you that “The installation was successful.” Click “Restart” to restart your computer.



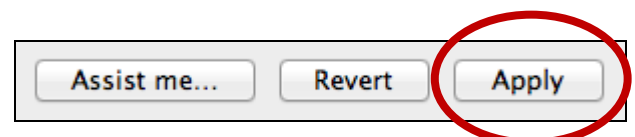
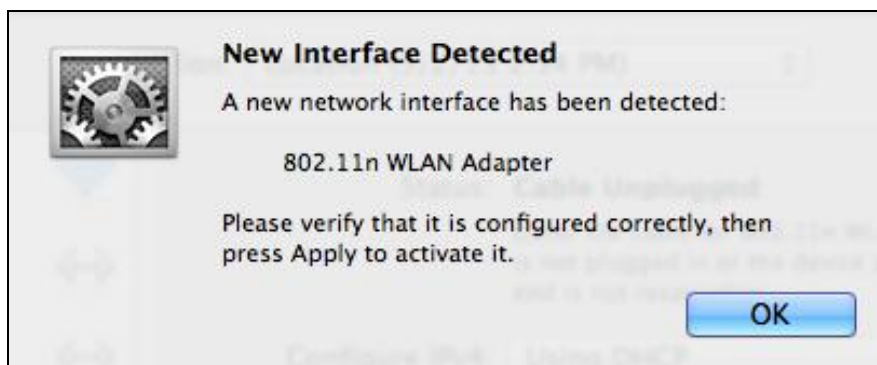


- 12.** When the adapter is connected to your computer (after your system has restarted) the wireless utility will open automatically. However if you see the notice below then you need to activate the adapter in “System Preferences → Network” as mentioned previously in **IV-1. Driver Installation** Step 3.

 *If the utility doesn't open, you can open it from the “Applications” menu in your Mac.*



- 13.** Go to “System Preferences → Network” and a pop up window will display that a new interface has been detected. Click “OK” to close the window and then click “Apply” in the bottom right corner of the “Network” panel.



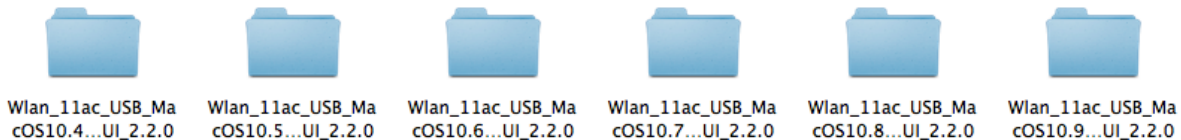
- 14.** Next, please disable any other wireless adapters as described in **VI. Disabling Network Adapters**. Then Mac users can connect to a Wi-Fi network using the included utility software. For guidance on doing so, please refer to **VII. Using The Adapter**.

## IV-2. Driver Uninstallation



***Ensure you select the correct folder for your version of Mac OS. To check your version of Mac OS, click the Apple logo in the top left corner of your desktop and go to “About This Mac”.***

1. Open the “Wlan\_11ac\_USB\_MacOS10...” folder for your version of Mac OS X (10.4 - 10.9).



2. Double click the “Uninstall.command” file and follow the on-screen instructions.



# V. Linux

---



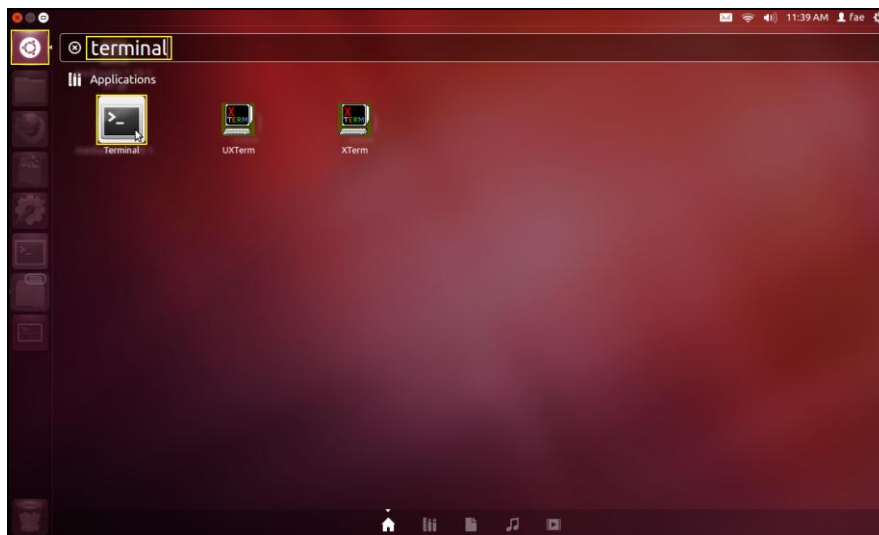
*The following instructions are an example of Linux setup using Ubuntu 12.04. The process may vary according to your operating system.*

## V-1. Driver Installation



*An active Internet connection is required for Linux driver installation.*

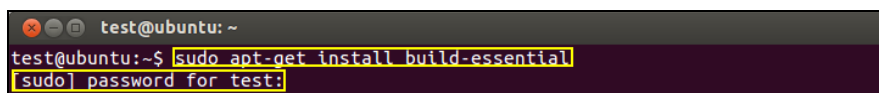
1. Ensure that your computer is connected to the Internet.
2. Click on “Dash Home” and then type “terminal”. Click the “terminal” icon.



3. Execute the command below to download the packet that is necessary to build the driver.

**sudo apt-get install build-essential**

Type the password for the administrator, and then type “y” to install the gcc packet.



4. Change to the “Home” directory and type the command below (where “test” is your login username):

**cd /home/test**

```
test@ubuntu: ~  
test@ubuntu:~$ cd /home/test/
```

5. Extract the driver using the command below:

**tar vxzf rtl8812AU\_linux\_v4.2.0\_6952.20130315.tar.gz**

```
test@ubuntu: ~  
test@ubuntu:~$ tar vxzf rtl8812AU_8821AU_linux_v4.2.0_6952.20130315.tar.gz
```

6. Check the extracted file with the command “ls”:

```
test@ubuntu: ~  
test@ubuntu:~$ ls  
core          examples.desktop  rtl8812AU_8821AU_linux_v4.2.0_6952.20130315  
Desktop       Music             rtl8812AU_8821AU_linux_v4.2.0_6952.20130315.tar.gz  
Documents    Pictures          Templates  
Downloads    Public            Videos
```

7. Change to the driver folder and execute the command below:

**cd rtl8812AU\_8821AU\_linux\_v4.2.0\_6952.20130315**

```
test@ubuntu: ~  
test@ubuntu:~$ cd rtl8812AU_8821AU_linux_v4.2.0_6952.20130315
```

8. Build the driver. Execute the command below and then input the password.

**sudo make**

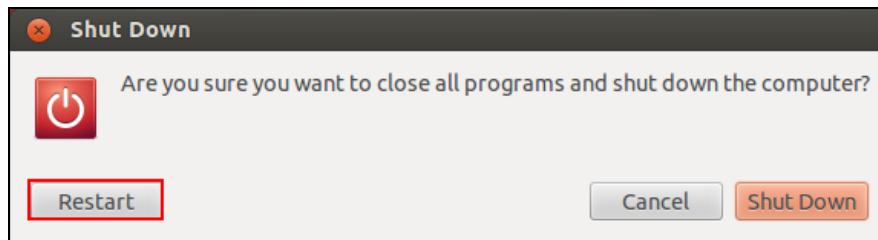
```
test@ubuntu: ~/rtl8812AU_8821AU_linux_v4.2.0_6952.20130315  
test@ubuntu:~/rtl8812AU_8821AU_linux_v4.2.0_6952.20130315$ sudo make  
[sudo] password for test:
```

**9.** Execute the command below to load the driver.

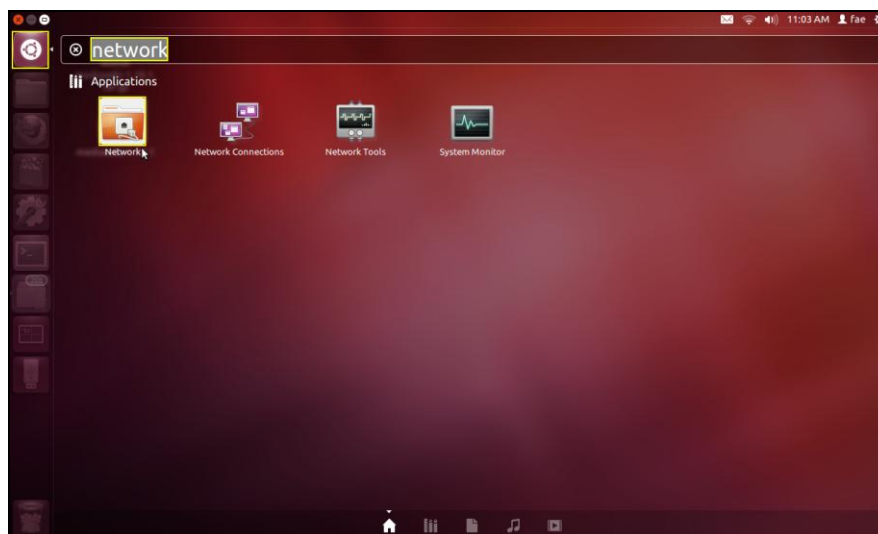
**sudo insmod 8821au.ko**

```
test@ubuntu: ~/rtl8812AU_8821AU_linux_v4.2.0_6952.20130315
test@ubuntu:~/rtl8812AU_8821AU_linux_v4.2.0_6952.20130315$ sudo insmod 8821au.ko
```

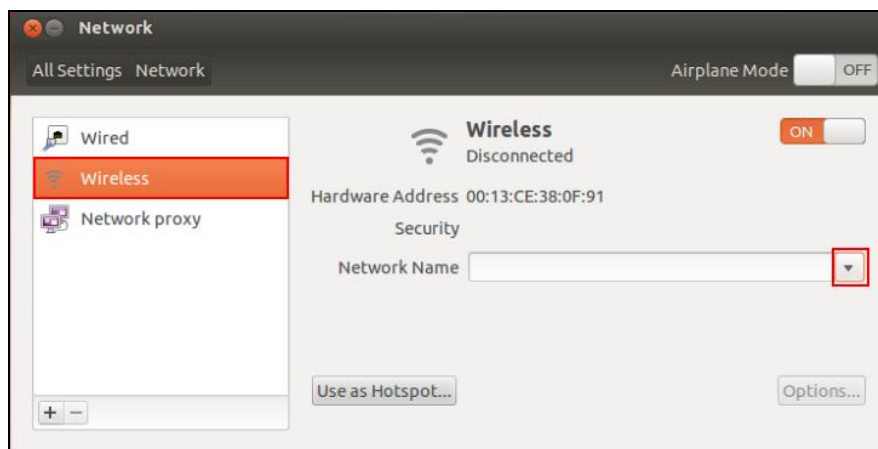
**10.** Plug the EW-7822UAC into your computer and press “Restart”.



**11.** When Ubuntu has restarted, click on “Dash Home” and then type “network”. Click on the “network” icon as below.



- 12.** Click on “Wireless” and then click the icon to open the drop-down menu labeled “Network Name”. Select the network you wish to connect to and enter the necessary security information.

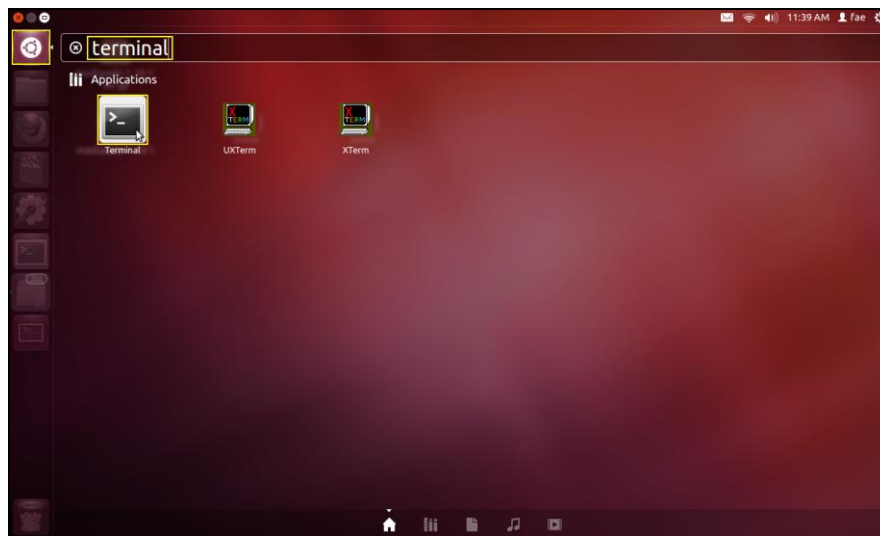


- 13.** The “Network” screen will display “Connected” to indicate a connection has been established, as shown below.



## V-2. Driver Uninstallation

1. Click on “Dash Home” and then type “terminal”. Click the “terminal” icon.



2. Switch to the directory:

```
cd /home/test/rtl8812AU_8821AU_linux_v4.2.0_6952.20130315/
```

3. Execute the following command to uninstall the driver:

```
sudo make clean
```

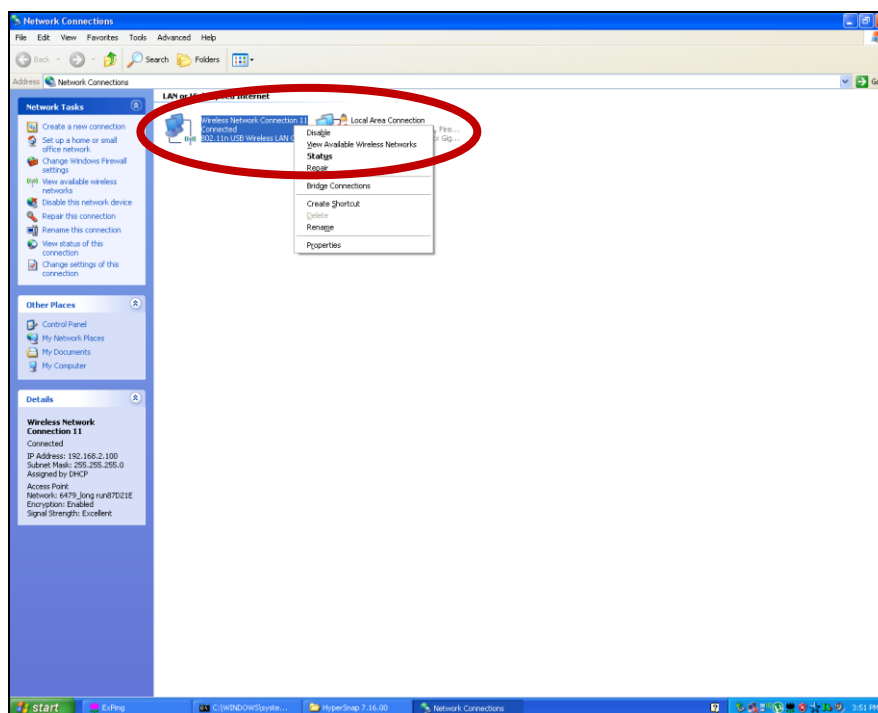
## VI. *Disabling Network Adapters*

---

To ensure that your USB wireless adapter can function correctly, it is recommended that you disable any other existing wireless network adapters installed on your computer. If you are unsure how to do so, you can refer to the user manual for your computer, or follow the guidance below.

### VI-1. Windows XP

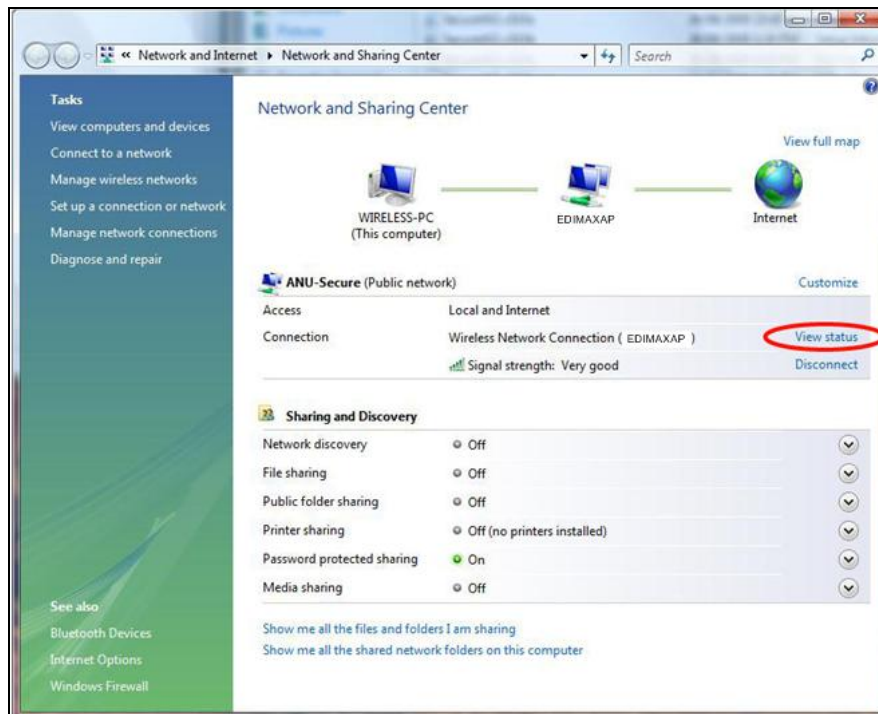
Go to **Start > Control Panel > Network Connections**. Right click your wireless adapter and then select “**Disable**”.





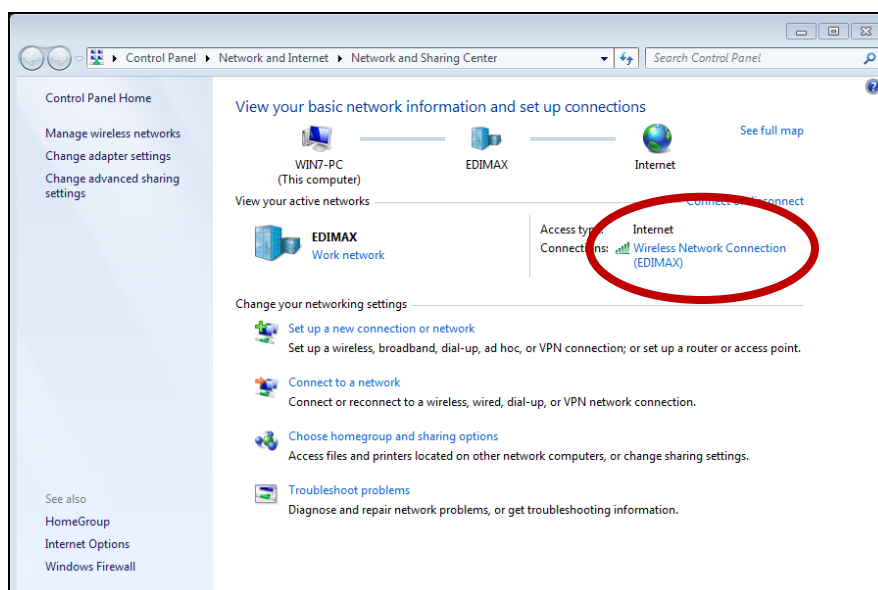
## VI-2. Windows Vista

Go to **Start > Control Panel**. Click **View network status and tasks > View Status** and click **Disable**.



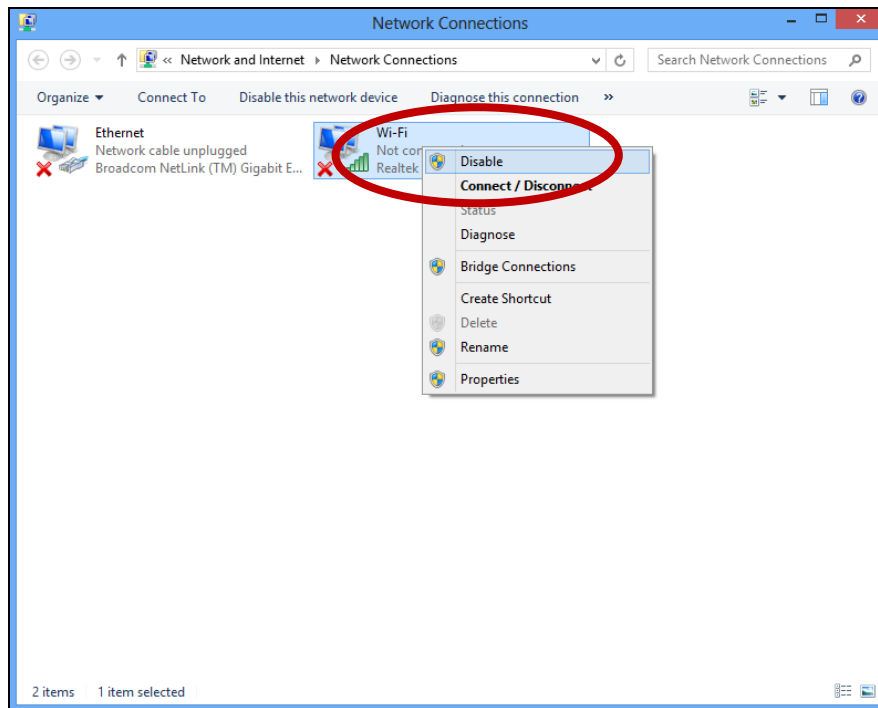
## VI-3. Windows 7

Go to **Start > Control Panel**. Click **View network status and tasks > Wireless Network Connection** and click **Disable**.



## VI-4. Windows 8/8.1

1. Switch to desktop mode by clicking your cursor in the bottom left of the Windows 8 Start screen. Then go to **File Explorer** > (right click) **Network** > **Properties** > **Change adapter settings**.
2. Right click your wireless adapter and then select “**Disable**”.



## VI-5. Mac

1. Select “System Preferences” from the dock.



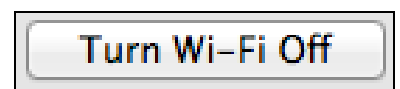
2. In “System Preferences”, select “Network”.



3. All of your network connections will be displayed, as shown below. Select “Wi-Fi” from the left panel.



4. Click “Turn Wi-Fi” off in the main panel.

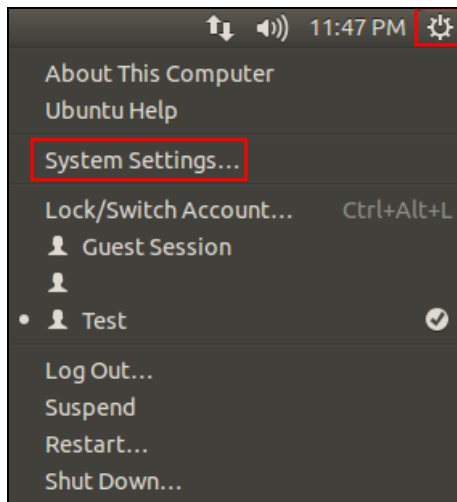


## VI-6. Linux

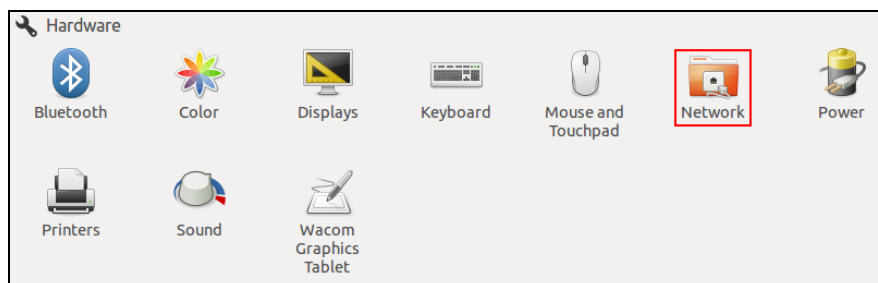


***The following instructions are an example of Linux using Ubuntu 12.04. The process may vary according to your operating system.***

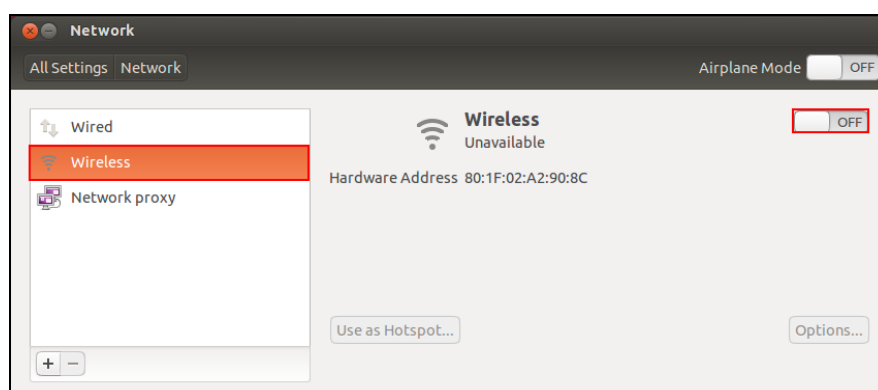
1. Click the icon in the top right corner (shown below) and select “System Settings” from the menu.



2. On the next screen, double click “Network” listed under “Hardware”.



3. Select a wireless adapter from the left panel, and then click the “ON/OFF” button on the right side to disable it.



## VII. Using The Adapter

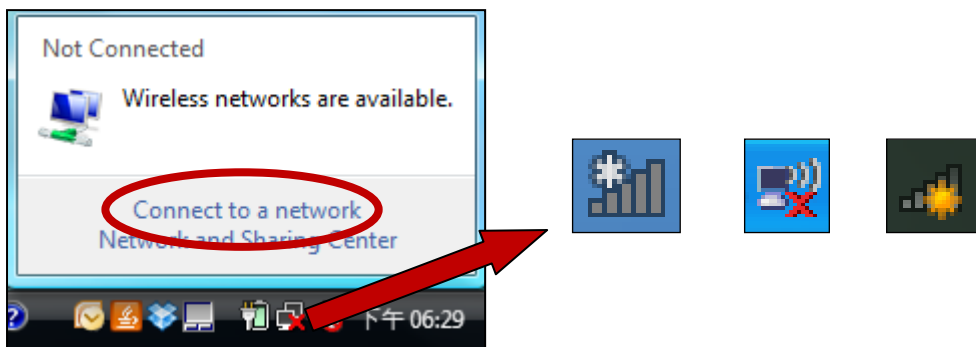
---

After you have installed the driver and if necessary disabled other wireless adapters (see **VI. Disabling Network Adapters**), Windows users can connect to a Wi-Fi network as usual (see below). Mac users need to connect to a Wi-Fi network using the included utility software, as described in **VII-2. Mac**.

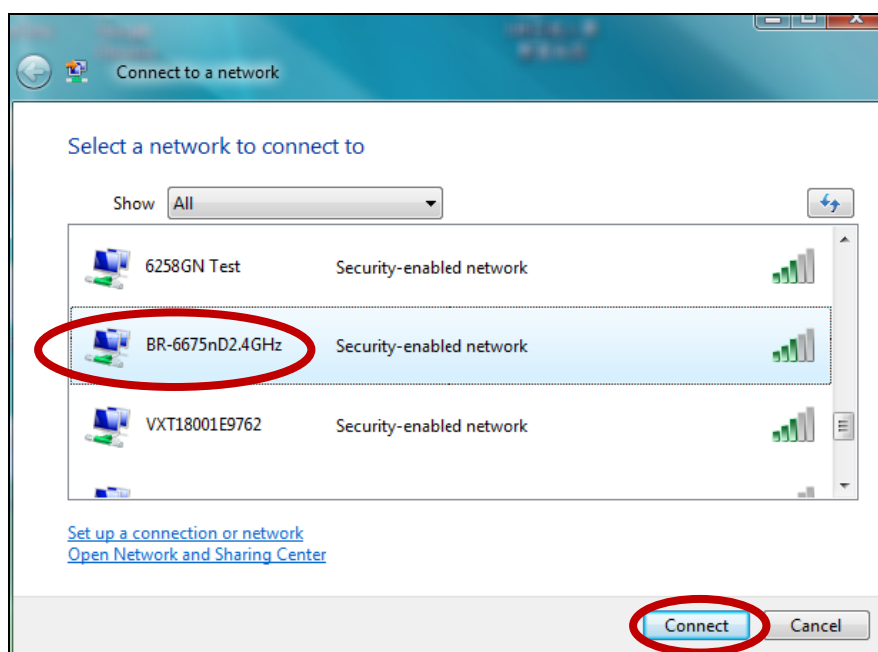
### VII-1. Windows

Below is an example of how to connect using Windows Vista - the process may vary slightly for other versions of Windows.

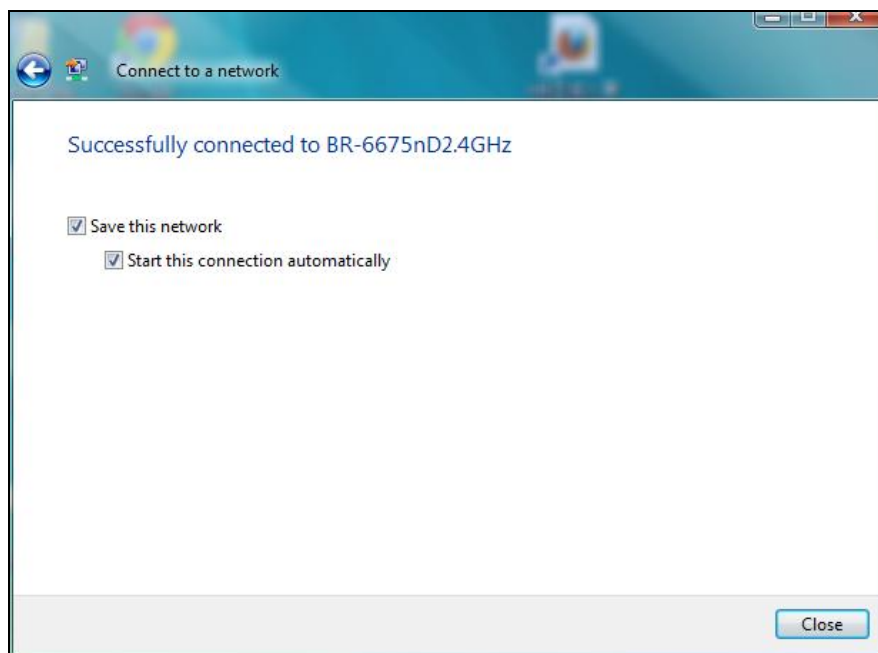
1. Click the network icon (examples below) in the system tray and select “Connect to a network”.



2. Search for the SSID of your Wi-Fi network and then click “Connect”. If you set a password for your network, you will then be prompted to enter it.



- 3.** After correctly entering your password, you will be successfully connected to your Wi-Fi network.



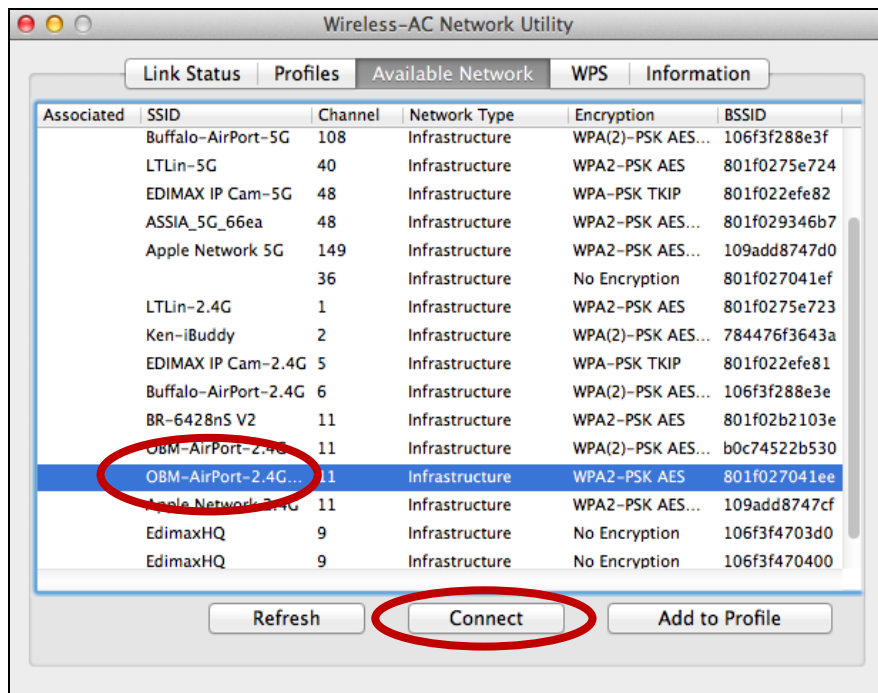
## VII-2. Mac: Connect to a Wi-Fi network

1. The wireless utility will open automatically when the adapter is connected to your computer.

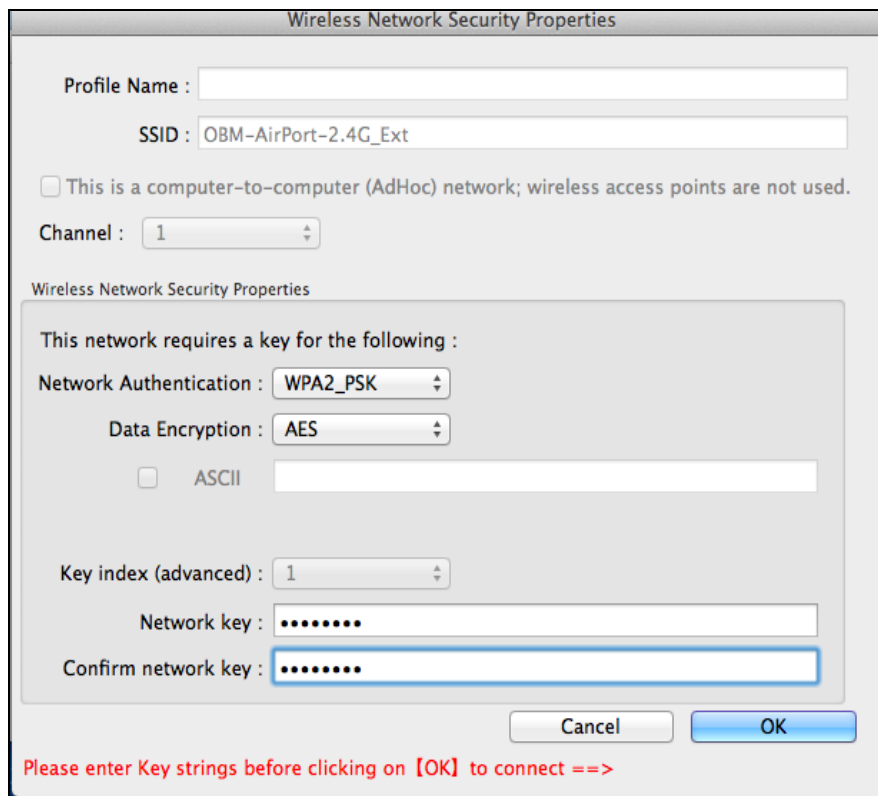


*If the utility doesn't open, you can open it from the "Applications" menu in your Mac.*

2. Click the "Available Network" tab in the wireless utility. Select a Wi-Fi network to connect to and click "Connect".

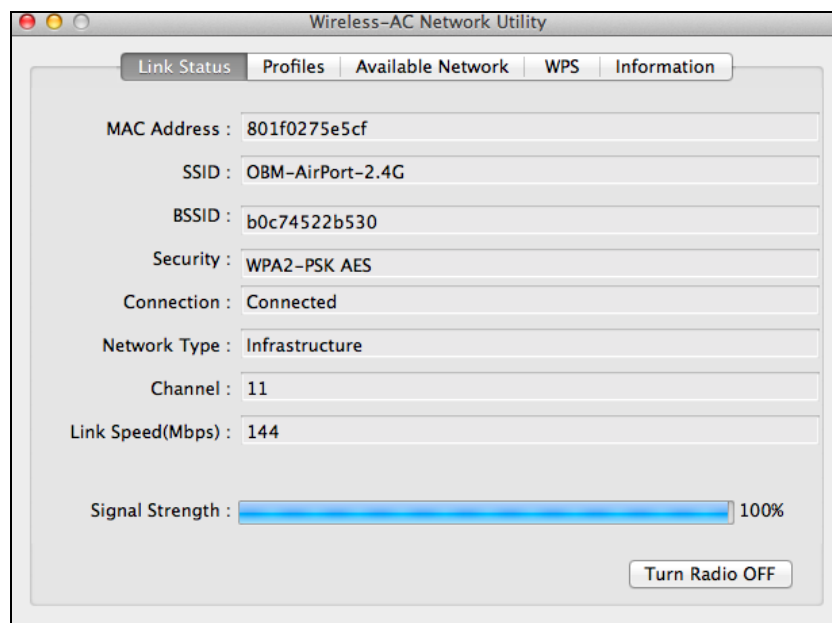


3. Enter the password (network key) for the Wi-Fi network, confirm the password (network key) again below and click “OK”.



The image shows a 'Wireless Network Security Properties' dialog box. It has a title bar with the same text. Inside, there's a 'Profile Name' field, an 'SSID' field with the value 'OBM-AirPort-2.4G\_Ext', and a checkbox for 'This is a computer-to-computer (AdHoc) network; wireless access points are not used.' Below that is a 'Channel' dropdown set to '1'. A section titled 'Wireless Network Security Properties' contains the text 'This network requires a key for the following :'. It has 'Network Authentication' set to 'WPA2\_PSK' and 'Data Encryption' set to 'AES'. There's an unchecked checkbox for 'ASCII' followed by an empty text field. Below that is a 'Key index (advanced)' dropdown set to '1'. Then there are two text fields: 'Network key' and 'Confirm network key', both containing seven dots. At the bottom right are 'Cancel' and 'OK' buttons. A red text message at the very bottom says 'Please enter Key strings before clicking on [OK] to connect ==>'.

4. After entering your password, you will be successfully connected to your Wi-Fi network. A summary of the connection will be displayed on the “Link Status” page, as shown below.



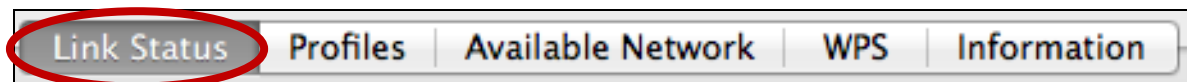
The image shows the 'Wireless-AC Network Utility' window with the 'Link Status' tab selected. The window has a title bar with standard macOS window controls. The 'Link Status' tab is active, showing various network details in a list-like format: 'MAC Address : 801f0275e5cf', 'SSID : OBM-AirPort-2.4G', 'BSSID : b0c74522b530', 'Security : WPA2-PSK AES', 'Connection : Connected', 'Network Type : Infrastructure', 'Channel : 11', and 'Link Speed(Mbps) : 144'. At the bottom, there's a 'Signal Strength' section with a blue progress bar that is nearly full and labeled '100%'. A 'Turn Radio OFF' button is located at the bottom right.



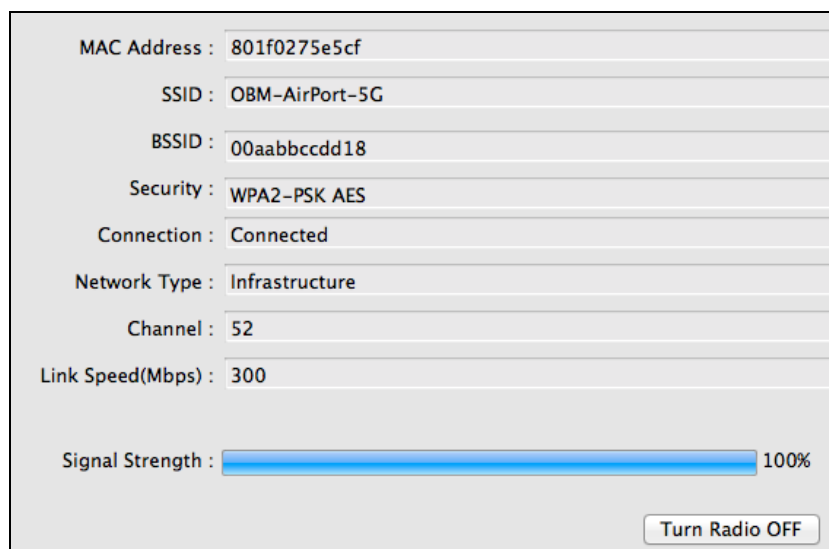
## VII-3. Mac: Wireless Utility

The wireless utility offers features to monitor and configure your connection. Navigate the wireless utility using the menu across the top of the window.

### VII-3-1. Link Status



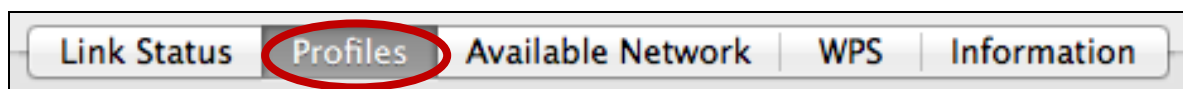
The “Link Status” page displays information about the current wireless connection.



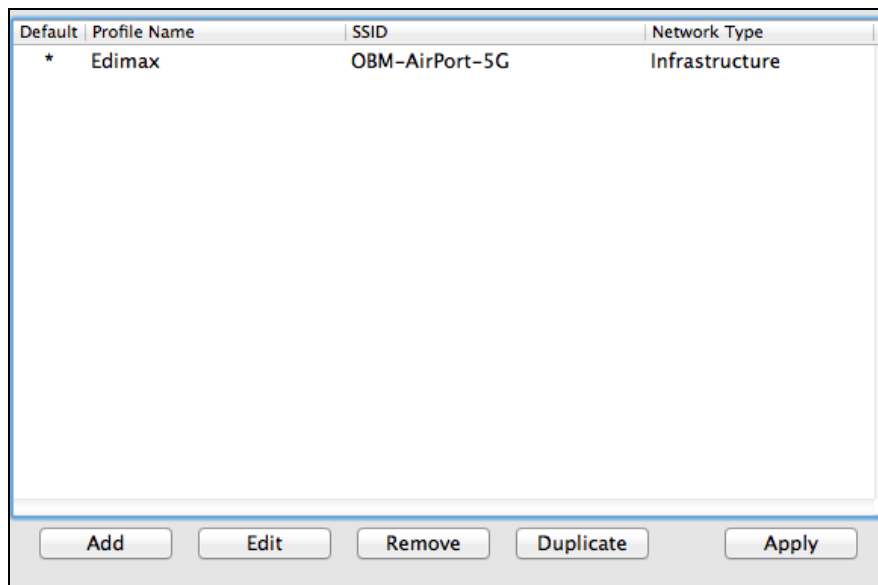
#### Turn Radio OFF

Switch off the adapter's wireless radio.

## VII-3-2. Profiles



The “Profiles” screen allows you to save different Wi-Fi connection settings as “Profiles”. Existing profiles are listed in the “Profile List”.



<b>Add</b>	Opens a new window to manually add a new profile.
<b>Edit</b>	Edit an existing profile.
<b>Remove</b>	Remove an existing (selected) profile.
<b>Duplicate</b>	Duplicate selected profile.
<b>Apply</b>	Save any changes.

## Add a Profile

When you select “Add”, a new window will open. Enter a profile name and SSID, along with security information, and then click “OK”.



***You can also add a new profile from the “Available Network” screen.***



***AdHoc networks are also supported – check the box labeled “This is a computer-to-computer (AdHoc network)...” and select a channel.***

<b>Profile Name</b>	Enter a reference name for the profile.
<b>SSID</b>	Manually enter the SSID to be used for this profile.
<b>Network Authentication</b>	Select the type of network authentication used by the specified SSID.
<b>Data Encryption</b>	Select the type of data encryption used by the specified SSID.
<b>Network Key</b>	Enter the network key/password for the specified SSID.
<b>Confirm Network Key</b>	Confirm the network key/password for the specified SSID.

### VII-3-3. Available Network



The “Available Network” screen displays a list of all available Wi-Fi networks within range along with various categories of information about each network.

Associated	SSID	Channel	Network Type	Encryption	BSSID
	EdimaxHQ_5G	44	Infrastructure	No Encryption	106f3f470418
	EdimaxHQ_5G	44	Infrastructure	No Encryption	106f3f4703d8
	CELENOF8F1A5	60	Infrastructure	WPA2-PSK AES	001f1ff8f1a5
	Buffalo-AirPort-5G	108	Infrastructure	WPA(2)-PSK AES...	106f3f288e3f
	EdimaxHQ_5G	40	Infrastructure	No Encryption	001020304058
	LTLin-5G	40	Infrastructure	WPA2-PSK AES	801f0275e724
	ASSIA_5G_66ea	48	Infrastructure	WPA2-PSK AES...	801f029346b7
	Apple Network 5G	149	Infrastructure	WPA2-PSK AES...	109add8747d0
	EDIMAX IP Cam-5G	48	Infrastructure	WPA-PSK TKIP	801f022efe82
	logitec2nd52	11	Infrastructure	WEP	02018e40d5b8
	logitec11a52	36	Infrastructure	WPA(2)-PSK AES...	00018e40d5ba
	Belkin.b37.media	149	Infrastructure	WPA2-PSK AES	ec1a59832b37
	logitec52	11	Infrastructure	WPA(2)-PSK AES...	00018e40d5b8
	MEETING_ROOM_6F	1	Infrastructure	No Encryption	001f1f1f73fc
	EdimaxHQ	9	Infrastructure	No Encryption	001020304050

Refresh      Connect      Add to Profile

<b>Refresh</b>	Refresh the list of available wireless networks.
<b>Connect</b>	Connect to a selected wireless network.
<b>Add to Profile</b>	Use a selected wireless network to create a new profile (see <b>VII-3-2. Profiles</b> ).

## VII-3-4. WPS

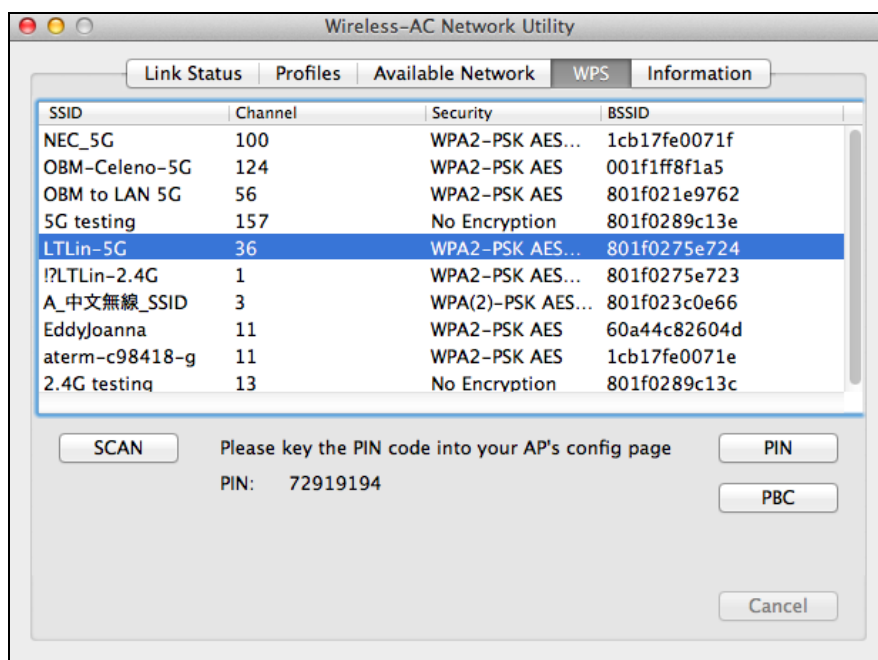


Wi-Fi Protected Setup is a simple, alternative way to establish connections between WPS compatible devices. Most modern wireless network devices feature a built-in WPS button, which activates WPS on that device. When WPS is activated in the correct manner and at the correct time for two compatible devices, they will automatically connect to each other.

WPS can also be activated via a device's web user interface, which has the same effect as physically pushing the WPS button (known as PBC or "push button configuration").

PIN code WPS is an additional variation of WPS which can be activated from a device's web user interface, and includes the use of a PIN code between the two devices for identification and verification.

The "WPS" page displays information about Wireless Protected Setup (WPS), including a list of available WPS access points. Instructions to set up PBC WPS and PIN code WPS are included below, followed by a description of each item on this page:



## PBC: Push Button Configuration

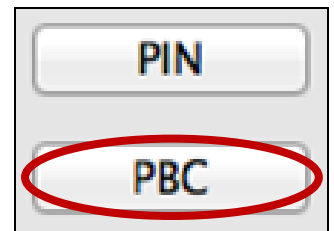
PBC WPS can be executed from this page by following the steps below:

1. Press the WPS button on your **wireless router/access point** for the correct length of time to activate its WPS.



***Please check the instructions for your wireless device for how long you need to hold down its WPS button to activate WPS.***

2. **Within two minutes**, click the “PBC” button in the bottom left of the “WPS” page. The wireless adapter will establish a connection with your wireless router/access point.



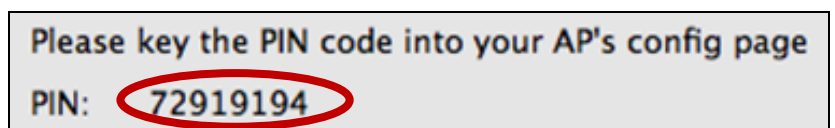
## PIN Code WPS

PIN code WPS includes the additional use of a PIN code between devices. This is useful for identification and verification purposes in crowded wireless environments with multiple routers/access points/wireless devices.

1. The wireless adapter’s PIN code is listed in the lower centre of the “WPS” page next to “PIN”. Go to your wireless router/access point’s web user interface and input the wireless adapter’s PIN code in the correct location, and activate PIN code WPS for your wireless router/adaptor.



***Please check the instructions for your wireless router/access point for how to access the web user interface and where to input the PIN code.***



**2. Within two minutes**, select your wireless/router/access point from the “WPS AP” list as shown below, and then click the “PIN” button in the bottom left of the “WPS” page. The wireless adapter will establish a connection with your wireless router/access point.

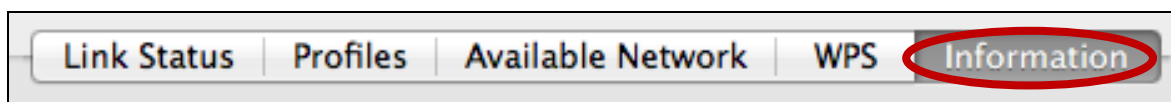
SSID	Channel	Security	BSSID
NEC_5G	100	WPA2-PSK AES...	1cb17fe0071f
OBM-Celero-5G	124	WPA2-PSK AES	001f1ff8f1a5
OBM to LAN 5G	56	WPA2-PSK AES	801f021e9762
5G testing	157	No Encryption	801f0289c13e
LTLin-5G	36	WPA2-PSK AES...	801f0275e724
!LTLin-2.4G	1	WPA2-PSK AES...	801f0275e723
A_中文無線_SSID	3	WPA(2)-PSK AES...	801f023c0e66
EddyJoanna	11	WPA2-PSK AES	60a44c82604d
aterm-c98418-g	11	WPA2-PSK AES	1cb17fe0071e
2.4G testing	13	No Encryption	801f0289c13c



Below is a general description of items on the “WPS” page:

<b>Scan</b>	Refresh the list of available wireless networks.
<b>PIN</b>	Activate PIN code WPS on the wireless adapter for two minutes.
<b>PBC</b>	Activate Push Button Configuration (PBC) WPS on the wireless adapter for two minutes.

## VII-3-5. Information



The “Information” screen displays various information such as wireless utility version and driver version.





## VII-4. WPS Setup

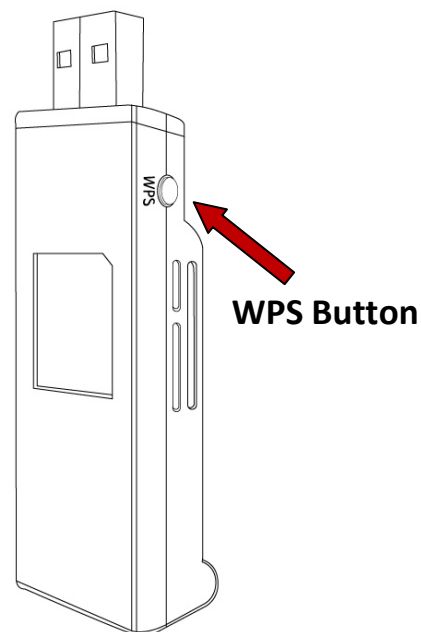
If your wireless router/access point supports Wi-Fi Protected Setup (WPS) then you can use this method to connect to a Wi-Fi network.

1. Press the WPS button (often the WPS/Reset button) on your router/access point to activate WPS.



***Please check the instructions for your wireless router/access point for how long you need to hold down its WPS button to activate WPS.***

2. Within two minutes, press the WPS button on the EW-7822UAC to activate its WPS.
3. The devices will establish a connection.



## COPYRIGHT

Copyright © Edimax Technology Co., Ltd. all rights reserved. No part of this publication may be reproduced, transmitted, transcribed, stored in a retrieval system, or translated into any language or computer language, in any form or by any means, electronic, mechanical, magnetic, optical, chemical, manual or otherwise, without the prior written permission from Edimax Technology Co., Ltd.

Edimax Technology Co., Ltd. makes no representations or warranties, either expressed or implied, with respect to the contents hereof and specifically disclaims any warranties, merchantability, or fitness for any particular purpose. Any software described in this manual is sold or licensed as is. Should the programs prove defective following their purchase, the buyer (and not this company, its distributor, or its dealer) assumes the entire cost of all necessary servicing, repair, and any incidental or consequential damages resulting from any defect in the software. Edimax Technology Co., Ltd. reserves the right to revise this publication and to make changes from time to time in the contents hereof without the obligation to notify any person of such revision or changes.

The product you have purchased and the setup screen may appear slightly different from those shown in this QIG. The software and specifications are subject to change without notice. Please visit our website [www.edimax.com](http://www.edimax.com) for updates. All brand and product names mentioned in this manual are trademarks and/or registered trademarks of their respective holders.

	AT	BE	BG	HR	CY	CZ	DK	
	EE	FI	FR	DE	EL	HU	IE	
	IT	LV	LT	LU	MT	NL	PL	
	PT	RO	SK	SI	ES	SE	UK	UK(NI)

The device is restricted to indoor use only when operating in the 5150 to 5350 MHz frequency range.

## Federal Communication Commission Interference Statement

This equipment has been tested and found to comply with the limits for a Class B digital device, pursuant to Part 15 of FCC Rules. These limits are designed to provide reasonable protection against harmful interference in a residential installation. This equipment generates, uses, and can radiate radio frequency energy and, if not installed and used in accordance with the instructions, may cause harmful interference to radio communications. However, there is no guarantee that interference will not occur in a particular installation. If this equipment does cause harmful interference to radio or television reception, which can be determined by turning the equipment off and on, the user is encouraged to try to correct the interference by one or more of the following measures:

1. Reorient or relocate the receiving antenna.
2. Increase the separation between the equipment and receiver.
3. Connect the equipment into an outlet on a circuit different from that to which the receiver is connected.
4. Consult the dealer or an experienced radio technician for help.

### FCC Caution

This device and its antenna must not be co-located or operating in conjunction with any other antenna or transmitter. This device complies with Part 15 of the FCC Rules. Operation is subject to the following two conditions: (1) this device may not cause harmful interference, and (2) this device must accept any interference received, including interference that may cause undesired operation. Any changes or modifications not expressly approved by the party responsible for compliance could void the authority to operate equipment.

### Federal Communications Commission (FCC) Radiation Exposure Statement

This equipment complies with FCC radiation exposure set forth for an uncontrolled environment. In order to avoid the possibility of exceeding the FCC radio frequency exposure limits, human proximity to the antenna shall not be less than 0.5cm during normal operation.

### Federal Communications Commission (FCC) RF Exposure Requirements

SAR compliance has been established in the laptop computer(s) configurations with PCMCIA slot on the side near the center, as tested in the application for certification, and can be used in laptop computer(s) with substantially similar physical dimensions, construction, and electrical and RF characteristics. Use in other devices such as PDAs or lap pads is not authorized. This transmitter is restricted for use with the specific antenna tested in the application for certification. The antenna(s) used for this transmitter must not be co-located or operating in conjunction with any other antenna or transmitter.

### RED Compliance Statement

#### Compliance with 2014/53/EU Radio Equipment Directive (RED)

In accordance with Article 10.8(a) and 10.8(b) of the RED, the following table provides information on the frequency bands used and the maximum RF transmit power of the product for sale in the EU:

Frequency range (MHz)	Max. Transmit Power (dBm)
2400~2483.5	19.84 dBm
5150~5250	22.40 dBm
5250~5350	19.70 dBm
5470~5725	19.69 dBm

A simplified DoC shall be provided as follows: Article 10(9)

Hereby, Edimax Technology Co., Ltd. declares that the radio equipment type **AC1200 11ac Wireless LAN Dual-Band USB Adapter** is in compliance with Directive 2014/53/EU

The full text of the EU declaration of conformity is available at the following internet address: <http://www.edimax.com/edimax/global/>

### Safety

This equipment is designed with the utmost care for the safety of those who install and use it. However, special attention must be paid to the dangers of electric shock and static electricity when working with electrical

equipment. All guidelines of this and of the computer manufacture must therefore be allowed at all times to ensure the safe use of the equipment.

**EU Countries Intended for Use**

The ETSI version of this device is intended for home and office use in Austria, Belgium, Bulgaria, Cyprus, Czech, Denmark, Estonia, Finland, France, Germany, Greece, Hungary, Ireland, Italy, Latvia, Lithuania, Luxembourg, Malta, Netherlands, Poland, Portugal, Romania, Slovakia, Slovenia, Spain, Sweden, Turkey, and United Kingdom. The ETSI version of this device is also authorized for use in EFTA member states: Iceland, Liechtenstein, Norway, and Switzerland.

**EU Countries Not Intended for Use**

None

## EU Declaration of Conformity

- English:** This equipment is in compliance with the essential requirements and other relevant provisions of Directive 2014/53/EU, 2014/35/EU.
- Français:** Cet équipement est conforme aux exigences essentielles et autres dispositions de la directive 2014/53/EU, 2014/35/EU.
- Čeština:** Toto zařízení je v souladu se základními požadavky a ostatními příslušnými ustanoveními směrnic 2014/53/EU, 2014/35/EU.
- Polski:** Urządzenie jest zgodne z ogólnymi wymaganiami oraz szczególnymi warunkami określonymi Dyrektywą UE 2014/53/EU, 2014/35/EU.
- Română:** Acest echipament este în conformitate cu cerințele esențiale și alte prevederi relevante ale Directivei 2014/53/UE, 2014/35/UE.
- Русский:** Это оборудование соответствует основным требованиям и положениям Директивы 2014/53/EU, 2014/35/EU.
- Magyar:** Ez a berendezés megfelel az alapvető követelményeknek és más vonatkozó irányelveknek (2014/53/EU, 2014/35/EU).
- Türkçe:** Bu cihaz 2014/53/EU, 2014/35/EU direktifleri zorunlu istekler ve diğer hükümlerle ile uyumludur.
- Українська:** Обладнання відповідає вимогам і умовам директиви 2014/53/EU, 2014/35/EU.
- Slovenčina:** Toto zariadenie spĺňa základné požiadavky a ďalšie príslušné ustanovenia smerníc 2014/53/EU, 2014/35/EU.
- Deutsch:** Dieses Gerät erfüllt die Voraussetzungen gemäß den Richtlinien 2014/53/EU, 2014/35/EU.
- Español:** El presente equipo cumple los requisitos esenciales de la Directiva 2014/53/EU, 2014/35/EU.
- Italiano:** Questo apparecchio è conforme ai requisiti essenziali e alle altre disposizioni applicabili della Direttiva 2014/53/EU, 2014/35/UE.
- Nederlands:** Dit apparaat voldoet aan de essentiële eisen en andere van toepassing zijnde bepalingen van richtlijn 2014/53/EU, 2014/35/EU.
- Português:** Este equipamento cumpre os requisitos essenciais da Directiva 2014/53/EU, 2014/35/EU.
- Norsk:** Dette utstyret er i samsvar med de viktigste kravene og andre relevante regler i Direktiv 2014/53/EU, 2014/35/EU.
- Svenska:** Denna utrustning är i överensstämmelse med de väsentliga kraven och övriga relevanta bestämmelser i direktiv 2014/53/EU, 2014/35/EU.
- Dansk:** Dette udstyr er i overensstemmelse med de væsentligste krav og andre relevante forordninger i direktiv 2014/53/EU, 2014/35/EU.
- suomen kieli:** Tämä laite täyttää direktiivien 2014/53/EU, 2014/35/EU. oleelliset vaatimukset ja muut asiaankuuluvat määräykset.

FOR USE IN

AT	BE	BG	CZ	DK	DE
EE	IE	EL	ES	FR	HR
IT	CY	LV	LT	LU	HU
MT	NL	PL	PT	RO	SI
SK	FI	SE	UK	UK(IN)	TR
IS	LI	NO	CH	RU	UA



## WEEE Directive & Product Disposal



At the end of its serviceable life, this product should not be treated as household or general waste. It should be handed over to the applicable collection point for the recycling of electrical and electronic equipment, or returned to the supplier for disposal.

## Declaration of Conformity

We, Edimax Technology Co., Ltd., declare under our sole responsibility, that the equipment described below complies with the requirements of the European Radio Equipment directives.

**Equipment:** AC1200 11ac Wireless LAN Dual-Band USB Adapter  
**Model No.:** EW-7822UAC

The following European standards for essential requirements have been followed:

### Directives 2014/53/EU

Spectrum : EN 300 328 V2.1.1 (2016-11)  
EN 301 893 V2.1.1 (2017-05)  
EMC : Draft EN 301 489-1 V2.2.0 (2017-03), Class B  
Draft EN 301 489-17 V3.2.0 (2017-03)  
EMF : EN 62311:2008  
Safety (LVD) : IEC 62368-1:2014 (2<sup>nd</sup> Edition) and/or EN 62368-1:2014+A11:2017

Edimax Technology Europe B.V.  
Fijenhof 2,  
5652 AE Eindhoven,  
The Netherlands

Printed Name: David Huang  
Title: Director  
Edimax Technology Europe B.V.

a company of:  
Edimax Technology Co., Ltd.  
No. 278, Xinhua 1st Rd.,  
Neihu Dist., Taipei City,  
Taiwan



Date of Signature: Nov., 2020

Signature:

A handwritten signature in black ink, appearing to read 'Albert Chang', written over a horizontal line.

Printed Name:

Albert Chang

Title:

Director

Edimax Technology Co., Ltd.