

## **Edimax Announces the Centralized Wireless Network Management Software, SKYMANAGE PC, for Businesses, Hospitality or Schools with Multi-Site Locations**

**Taipei, Taiwan – Aug. 30, 2018**

Edimax Technology, a leading networking solutions provider, today announced the launch of the Edimax Pro SKYMANAGE PC to simplify and centralize the deployment and management of complex wireless network remotely. It is perfect for the business application environments of offices, hospitality, schools or system integrator projects with multi-site locations.



Generally, the network configuration and management are time consuming and overly complicated for network administrators. On top of that, Wi-Fi security is another concern for adapting the Wi-Fi System by the SMB office itself. To combat these nuisances, Edimax devoted itself into the development of SKYMANAGE PC with the new functions that enable the system integrator and business to simplify wireless network management with local and remote access through internet cloud.

Edimax Pro SKYMANAGE PC is an easy-to-use Wi-Fi network management software to easily deploy, configure, manage and monitor connected Edimax Pro Wi-Fi access points and wireless networks devices from anywhere with security. It is Windows web-based software with intuitive interface which is easy enough for anyone to use without the need of an IT administrator. SKYMANAGE PC can remotely controls across the globe up to 10 multiple sites with multi-tenant and flexible scalability that supports up to 250 Edimax Pro Access Points without any licensing fees.

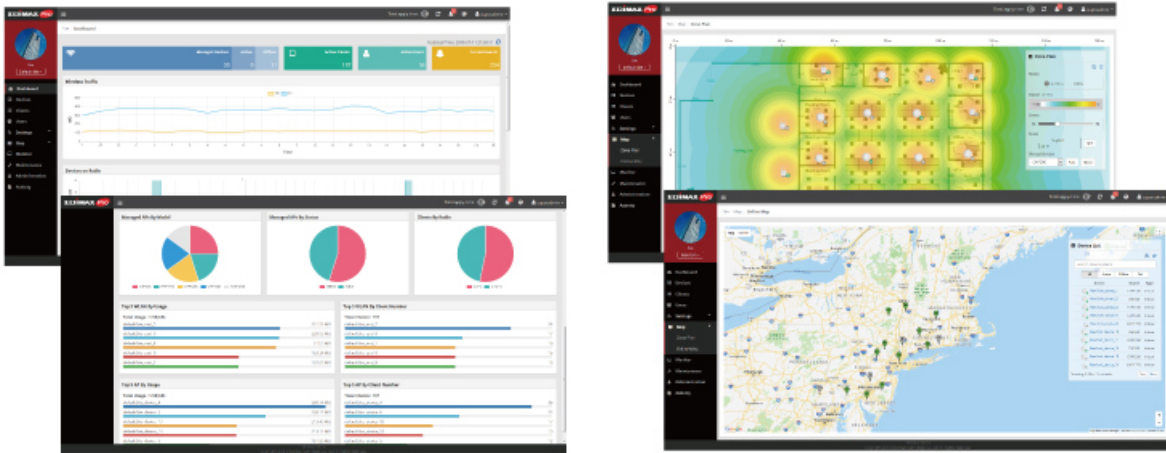
### **Centralized, Remote Management with Private-Cloud Virtual AP Controller \***

Installed on a local PC or is a cloud server\* such as AWS for remote management. Easily accessible through any standard web browser, SKYMANAGE PC helps network administrators to simplify wireless network management and monitoring the connected Edimax Pro access points and Wi-Fi clients across

multiple sites with multi-tenant capability from anywhere, anytime. *\*Need to be installed in cloud virtual server service such as AWS which is not included with the software.*

### **Flexible, Scalable WLAN Configuration with Easy-to-Use Graphical Status, Reports and Tools**

Supporting up to 250 access points and 10 multiple sites with easy configuration wizard and access point auto-discovery utility, the SKYMANAGE PC enables the system integrator or network administrator to effectively and efficiently deploy fully functional wireless networks with flexibility and scalability. Additionally, multiples sites and AP groups can be configured and added in the network or update their settings at one time. Intuitive interface and graphical dashboard show the network status for easy configuration and quick access to key performance and monitoring information. Easy to use and viewing of real-time status and historical data with a dashboard overview web UI for the connected APs and clients across multiple sites.



### **Built for Business and Projects, No License Fees at Lower Total Cost of Ownership**

With rich features including traffic management, RF performance configuration, spectral analysis, Airtime Fairness, Band steering, auto channel, guest portal and more, SKYMANAGE PC is ideal for the demands of small-to-medium business environments including offices, hotels, schools, resorts, retailers, shopping malls, community, residential, etc., and system integrator projects. Moreover, SKYMANAGE PC is free to use at no



licensing cost. Total cost of ownership (TCO) of wireless network deployment with the SKYMANAGE PC impresses even the most cost-restricted organizations. It is guaranteed to provide unmatched WLAN ROI (Return of Investment).



For more information, visit <https://www.edimax.com/campaigns/skymanagepc/global/> or contact [marketing@edimax.com.tw](mailto:marketing@edimax.com.tw)

### **About Edimax Technology**

Edimax Technology is dedicated to the design, development and manufacture of smart networking solutions for homes and business. With 32 years of dedication and a worldwide footprint, the company provides superior solutions that combine the latest and best-fitting technology with customer needs. 20 branch offices around the world offer direct, real-time services and support to more than 300 partners across 70 countries. With ISO 9000/14000 certification and recognized by Interbrand as one of the top 35 global Taiwanese brands, the company consistently delivers advanced networking solutions and services based on its core values of Quality, Service, Innovation and Integrity (QSII).