

# Industrial & Business Networking Solution Guide

Elevating Your Industry and Business  
with Enhanced Connectivity



Downloadable  
Marketing Resources



# YOUR TRUSTWORTHY NETWORKING PARTNER

## About EDIMAX

EDIMAX Technology, a worldwide leading brand - EDIMAX, is dedicated to designing, developing, and manufacturing smart networking solutions for business and home. Over 35 years of dedication and a worldwide footprint, the company provides superior solutions that combine the latest and best-fitting technology with customer needs. 20 branch offices and service centers around the world offer direct, real-time services and support to more than 300 partners across 70 countries. With ISO 9000/14000/27001 certifications, global winning product design awards and recognized by Interbrand as one of the top 35 global Taiwanese brands, the company consistently delivers advanced, in-class networking solutions and services based on its core values of Quality, Service, Innovation and Integrity (QSII).

## Solutions & Products



### Embedded Wireless ..... 1

EDIMAX offers a one-stop service for diverse industries with customer-centric designed wireless adapters. In order to address the IIoT, AIoT market, EDIMAX embedded solution can be integrated with different types of wireless data acquisition solutions.



### SMB Networking ..... 6

From small to large spaces, depending on the scales of the Wi-Fi or wired networks, the EDIMAX business switches, access points, network management software, AP controller products are available for flexible and cost-saving networking deployment.

## Why EDIMAX?

- ✓ World's leading networking solution provider
- ✓ Award-winning products and solutions, including iF Design, Reddot Award, Taiwan Excellence Awards, etc.
- ✓ Over 35 years R&D, manufacturing & marketing experiences
- ✓ A global brand with local services and in-house R&D team
- ✓ A proven track record of successful use cases
- ✓ Excellence cost-performance ratio and affordable solutions

Headquarters

**3**

Branches & Service Centers

**20+**

Employees

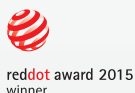
**1500+**

Distributors & Partners

**300+**

R & D Manpower

**35%**



# Your Industry, Our Solution. IIoT & AIoT Implementation.

Ideas Anywhere, Wi-Fi Everywhere! Let your IIoT/AIoT devices go wireless.

## Industrial 4.0

Industrial IoT Devices, Factory Automation Robot, Portable RFID Reader, Barcode Scanner, People Counter, Receipt Machine, etc.



## Smart Agriculture

Autonomous Robots, Drones or UAVs, Sensors and the IoT from Temperature, Water Level, Water Pressure, Solar Radiation, Leaf Moisture, Stem Diameter, etc.



## Healthcare

Glucometer, Thermometer, Sphygmomanometer, Oximeter, Diagnostic Devices, Microscope, etc.



## Lifestyle

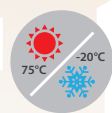
Commercial Air Purifier, Drone, Business Printer, Coffee System, Creative Robots, Golf Swing Analyzers, Smart Home Appliances, etc.



## World's First Industrial-Grade Embedded Wi-Fi USB Adapter

### IIoT Ready? Easily Add Wi-Fi to Your Device

Enable your product with wireless connectivity

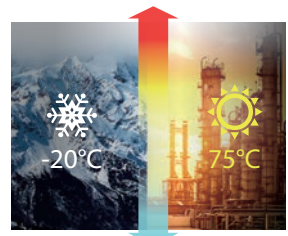


**New**  
IEW-7811UTC

Introducing the all-new embedded Wi-Fi USB Adapter, IEW-7811UTC. Allowing greater Wi-Fi connection in harsh environments, the IEW-7811UTC comes with dedicated, robust, and outstanding electronic and mechanical designs, making it easy to embed in your devices and operate within a wide temperature range from -20°C to 75°C (-4°F to 167°F). Made for industrial and outdoor Wi-Fi connectivity that ensures excellent performance.

Not only does the adapter offer long-term durability and performance, the IEW-7811UTC comes with security, quality and wide compatibility. Works with Windows and Linux embedded systems, further inter-operates with your existing Wi-Fi routers, AP and extenders without replacements or additional purchases.

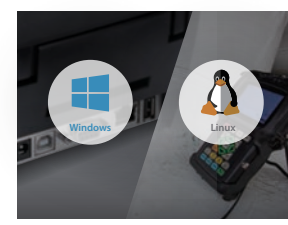
Ideal for using in outdoors with low or high temperature environments, indoor rooms with heat dissipation difficulties and embedding in devices with limited space.



Durable and Reliable Wi-Fi



High Level Security



Smooth Compatibility



Dual Band Selectivity

# Why EDIMAX?

Get your devices IoT ready with EDIMAX, you will no longer need to spend excessively on R&D resources and time. EDIMAX has more than 30 years experiences for providing networking products and expect the industrial-grade Wi-Fi USB Adapter, EDIMAX offers various wireless USB adapters. With the professional hardware and software design teams, EDIMAX makes integration easily and simplified the process to advance your devices to the next level with wireless connectivity.



**Quality Like No Other**



**Custom Build**



**World Class Certifications**

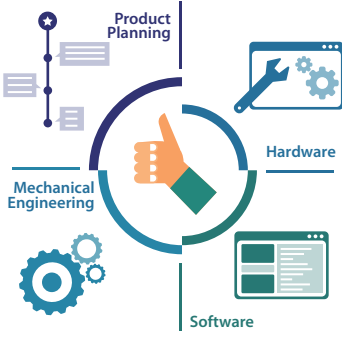


**Short Time-to-Market**

## Quality Like No Other

### Strong R&D

Dedicated R&D team, fully focused on function, performance and quality.



### Reliability

Strict product reliability tests help uncover flaws in system design and functionality.

- ◆ >30 Quality Assurance Testing Items
- ◆ 5 Times Testing Items than Others

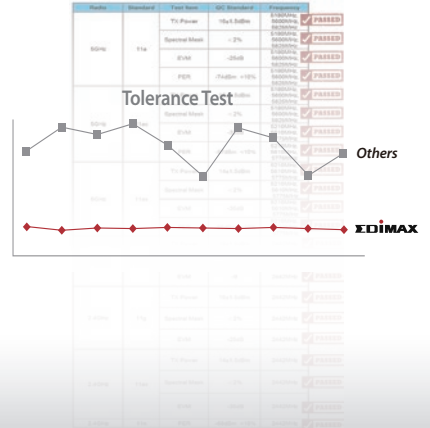


**Others**  
 NFT / Throughput Test  
 WLAN MAC address  
 PID/VID consistency Driver

### Consistency

Consistent high-performance through strict and rigorous testing.

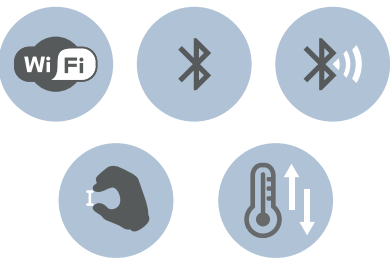
- ◆ Low Tolerance to Meet High Quality Consistency
- ◆ Strict Quality Control During and After Production



## Custom Build for The Right Fit

### Full Range Solution

- Wi-Fi 4/5/6 or Bluetooth
- Wi-Fi & Bluetooth Combo
- Ultra Small or Other Sizes
- Normal or Harsh Environment Use



### Design-in Service

- Up-to-date Driver
- RF Certification
- Optimal Antenna Design
- Wireless System Performance Tuning



### Mass Customization

- Laser Printing Customization
- Flexible Bulk Package for Saving Shipping Cost
- Modulated Design



## World Class Certifications

EDIMAX has approval for more than 30 different countries or regions regulation certification experiences. With this international multi-country certification experiences, EDIMAX can assist to get the certification upon request to shorten the product launch schedule and also save the huge application cost.



## Short Time-To-Market



### Production

- World's Leading Networking Solution Provider / Manufacturer
- ISO 9001 & ISO 14000 Certified
- Mass Production Process with Total Quality Management (TQM)
- Fast and Flexible Service

### QC & RF Certification

- Reliability Test
- Performance Test
- Quality Assurance
- Certified in 25+ Countries and Regions

### System Performance Check

- Owned Labs
- Driver Integration
- Wireless Performance
- Throughput
- Transmission Power
- Receive Sensitivity
- Radiation Pattern
- Functionality

### Inquiry

- Wireless Requirement: Wi-Fi, Bluetooth, Combo
- OS Platform
- OS Version
- Certification Requirement

### Product Selection

- Specification Version
  - ▶ Wi-Fi 4/5/6 (802.11 ax/ac/a/b/g/n)
  - ▶ Bluetooth or Combo
  - ▶ Dual-band
- Throughput
- Form size
- High Gain/Long Range
- High Efficiency
- Operating Temperature



	Industrial Grade		Wi-Fi 5 11ac	
	IEW-7811UTC	EW-7822ULC	EW-7822ULC	EW-7822UTC
Nano & Mini Design				
Performance				
Speed	433Mbps + 200Mbps	867Mbps + 300Mbps		867Mbps + 300Mbps
Bands	Dual-Band 5GHz or 2.4GHz	Dual-Band 5GHz or 2.4GHz		Dual-Band 5GHz or 2.4GHz
Antenna	Internal  PIFA 2.4GHz: 1.8dBi 5GHz: 2.5dBi	2 Internal  Monopole 2.4GHz: 1.81 and 0.36dBi 5GHz: 1.71 and -0.23dBi		2 Internal  PIFA 2.4GHz: 2.48 and 2.5dBi 5GHz: 2.89 and 3.3dBi
USB Standard	USB 2.0	USB 2.0		USB 3.2 Gen 1*
Certification	<ul style="list-style-type: none"> <li>• CE (European Union)</li> <li>• FCC (U.S.)</li> <li>• IC (Canada)</li> <li>• MIC/VCCI (Japan)</li> <li>• IMDA (Singapore)</li> <li>• NBTC (Thailand)</li> <li>• WPC (India)</li> <li>• NTC (Philippines)</li> <li>• Exemption Letter (Vietnam)</li> <li>• SIRIM (Malaysia)</li> <li>• SRRC (China)</li> <li>• OFCA (Hong Kong)</li> <li>• NCC (Taiwan)</li> <li>• BSMI (Taiwan)</li> <li>• CITC (Saudi Arabia)</li> <li>• RCM (Australia &amp; New Zealand)</li> <li>• Anatel (Brazil)</li> <li>• SUBTEL (Chile)</li> <li>• CRC (Colombia)</li> <li>• ENACOM (Argentina)</li> <li>• TRA (Bahrain)</li> <li>• CITRA (Kuwait)</li> <li>• TRA (Oman)</li> <li>• CRA (Qatar)</li> <li>• ICASA (South Africa)</li> <li>• UA RED DoC (Ukraine)</li> <li>• URSEC (Uruguay)</li> <li>• KC (South Korea)</li> <li>• IFETEL/NOM (Mexico)</li> <li>• SDPPI (Indonesia)</li> <li>• MOC (Israel)</li> <li>• TDRA (United Arab Emirates)</li> </ul>			
Report List	<ul style="list-style-type: none"> <li>• CE (European Union)</li> <li>• FCC (U.S.)</li> <li>• Operating Temperature: -20~75°C (-4~167°F)</li> </ul>			<ul style="list-style-type: none"> <li>• FCC (U.S.)</li> <li>• IMDA (Singapore)</li> </ul>
	Wi-Fi 5 11ac		Wi-Fi 4 11n	
	EW-7811ULC	EW-7811UTC	EW-7722UTn V3	EW-7811Un V2
Nano & Mini Design				
Performance				
Speed	433Mbps + 200Mbps	433Mbps + 150Mbps	300Mbps	150Mbps
Bands	Dual-Band 5GHz or 2.4GHz	Dual-Band 5GHz or 2.4GHz	2.4GHz	2.4GHz
Antenna	Internal  PIFA 2.4GHz: 0.98dBi 5GHz: 3.93dBi	Internal  PIFA 2.4GHz: 2dBi 5GHz: 4dBi	2 Internal  PIFA 2.4GHz: 1.3dBi	Internal  PIFA 2.4GHz: -4dBi
USB Standard	USB 2.0	USB 2.0	USB 2.0	USB 2.0
Certification	<ul style="list-style-type: none"> <li>• CE (European Union)</li> <li>• FCC (U.S.)</li> <li>• IC (Canada)</li> <li>• NCC (Taiwan)</li> <li>• BSMI (Taiwan)</li> <li>• ICT Qatar (Qatar)</li> <li>• RCM (Australia &amp; New Zealand)</li> <li>• CRC (Colombia)</li> </ul>			
Report List	<ul style="list-style-type: none"> <li>• CE (European Union)</li> <li>• FCC (U.S.)</li> <li>• NCC (Taiwan)</li> <li>• BSMI (Taiwan)</li> </ul>	<ul style="list-style-type: none"> <li>• CE (European Union)</li> <li>• FCC (U.S.)</li> <li>• IC (Canada)</li> <li>• NCC (Taiwan)</li> <li>• BSMI (Taiwan)</li> <li>• ICT Qatar (Qatar)</li> <li>• RCM (Australia &amp; New Zealand)</li> <li>• CRC (Colombia)</li> </ul>	<ul style="list-style-type: none"> <li>• CE (European Union)</li> <li>• FCC (U.S.)</li> <li>• NCC (Taiwan)</li> <li>• BSMI (Taiwan)</li> </ul>	<ul style="list-style-type: none"> <li>• CE (European Union)</li> <li>• FCC (U.S.)</li> <li>• IC (Canada)</li> <li>• NCC (Taiwan)</li> <li>• BSMI (Taiwan)</li> </ul>



	Wi-Fi 5/4 & Bluetooth			Bluetooth		
	EW-7611UCB	EW-7611ULB V2	EW-7611ULB	BT-8500		
Nano & Mini Design						
Performance						
Speed	Wi-Fi: 433Mbps+150Mbps BLE: 1Mbps	Wi-Fi: 150Mbps BLE: 1Mbps	Wi-Fi: 150Mbps BLE: 1Mbps	3Mbps (Classic BR/EDR) & 2Mbps (BLE)		
Bands	Dual-Band 5GHz or 2.4GHz + BT 4.0	2.4GHz + BT 4.2	2.4GHz + BT 4.0	BT 5.0		
Antenna	Internal	Internal	Internal	Internal		
	PIFA 2.4GHz : 2dBi 5GHz : 3dBi	PIFA 2.4GHz: 1.6dBi	PIFA 2.4GHz: 1.6dBi	PIFA 2.4GHz: -1.2dBi		
USB Standard	USB 2.0	USB 2.0	USB 2.0	USB 2.0		
Certification						
Report List	<ul style="list-style-type: none"> <li>•CE (European Union)</li> <li>•IMDA (Singapore)</li> </ul>	<ul style="list-style-type: none"> <li>•BQB (Bluetooth)</li> <li>•CE (European Union)</li> <li>•FCC (U.S)</li> <li>•IC (Canada)</li> </ul>	<ul style="list-style-type: none"> <li>•BQB (Bluetooth)</li> <li>•CE (European Union)</li> <li>•FCC (U.S)</li> <li>•IC (Canada)</li> <li>•MIC/VCCI (Japan)</li> <li>•KC (South Korea)</li> <li>•WPC (India)</li> <li>•OFCA (Hong Kong)</li> </ul>	<ul style="list-style-type: none"> <li>•NCC (Taiwan)</li> <li>•BSMI (Taiwan)</li> <li>•ICASA (South Africa)</li> <li>•NTRA (Egypt)</li> <li>•TRA (Bahrain)</li> <li>•TRA (OMAN)</li> <li>•CRA (Qatar)</li> <li>•IFETEL (Mexico)</li> </ul>	<ul style="list-style-type: none"> <li>•CRC (Colombia)</li> <li>•MTC (Peru)</li> <li>•RCM (Australia &amp; New Zealand)</li> </ul>	<ul style="list-style-type: none"> <li>•BQB (Bluetooth)</li> <li>•CE (European Union)</li> <li>•FCC (U.S)</li> <li>•IC (Canada)</li> <li>•NCC (Taiwan)</li> <li>•BSMI (Taiwan)</li> </ul>
Compact, Portable, Specialized Design	Wi-Fi 6 11ax	Wi-Fi 5 11ac				
	EW-7822UMX	EW-7833UAC	EW-7822UAC	EW-7822UAD	EW-7811UAC	EW-7811DAC
						
Performance						
Speed	1201Mbps + 573Mbps	1300Mbps + 450Mbps	867Mbps + 300Mbps	867Mbps + 300Mbps	433Mbps + 150Mbps	433Mbps + 150Mbps
Bands	Dual-Band 5GHz or 2.4GHz	Dual-Band 5GHz or 2.4GHz	Dual-Band 5GHz or 2.4GHz	Dual-Band 5GHz or 2.4GHz	Dual-Band 5GHz or 2.4GHz	Dual-Band 5GHz or 2.4GHz
Antenna	2 Internal	2 Internal + 1 External	1 Internal + 1 External	2 External	External	External
	Dipole 2.4GHz : 3.6 and 3.1dBi 5GHz : 4.5 and 5.6dBi	180° Adjustable Foldaway Internal PIFA 2.4GHz: 4.84 and 3.69dBi 5GHz: 3.78 and 3.04dBi External 2.4GHz: 3.41dBi 5GHz: 4.74dBi	180° Adjustable Foldaway Internal Monopole 2.4GHz: 2dBi 5GHz: 2dBi External 2.4GHz: 2dBi 5GHz: 2dBi	Dipole 2.4GHz : 1.32 and 2.09dBi 5GHz : 2.8 and 4.37dBi	Dipole 2.4GHz : 4dBi 5GHz : 6dBi	Directional 2.4GHz : 4.2dBi 5GHz : 7.1dBi
USB Standard	USB 3.2 Gen 1*	USB 3.2 Gen 1*	USB 3.2 Gen 1*	USB 3.2 Gen 1*	USB 2.0	USB 2.0
Certification						
Report List	<ul style="list-style-type: none"> <li>•CE (European Union)</li> <li>•FCC (U.S)</li> <li>•IC (Canada)</li> <li>•NCC (Taiwan)</li> <li>•BSMI (Taiwan)</li> </ul>	<ul style="list-style-type: none"> <li>•CE (European Union)</li> <li>•FCC (U.S)</li> <li>•MIC (Japan)</li> <li>•IMDA (Singapore)</li> </ul>	<ul style="list-style-type: none"> <li>•CE (European Union)</li> <li>•FCC (U.S)</li> <li>•IC (Canada)</li> <li>•IMDA (Singapore)</li> <li>•WPC (India)</li> </ul>	<ul style="list-style-type: none"> <li>•CE (European Union)</li> <li>•FCC (U.S)</li> <li>•NCC (Taiwan)</li> <li>•BSMI (Taiwan)</li> </ul>	<ul style="list-style-type: none"> <li>•CE (European Union)</li> <li>•FCC (U.S)</li> <li>•IC (Canada)</li> <li>•IMDA (Singapore)</li> </ul>	<ul style="list-style-type: none"> <li>•CE (European Union)</li> <li>•FCC (U.S)</li> <li>•IC (Canada)</li> <li>•IMDA (Singapore)</li> <li>•NCC (Taiwan)</li> <li>•BSMI (Taiwan)</li> </ul>

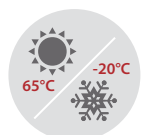
(\*Previous USB 3.0/USB 3.1 Gen 1 is rebranded as USB 3.2 Gen 1 by USB-IF)





# Industrial Networking Solution

Allowing the network connection in harsh environments, the industrial switch comes with dedicated, robust outstanding electronics and mechanical design can operate within a wide temperature range from -20°C to 65°C (-4°F to 149°F), for industrial network use. In order to provide a stable PoE power supply and reliable network connection, the dual PoE power budget supply, enables the network administrator to adjust the PoE power supply for classic mode and industrial mode (default), to PoE devices. Not only for industrial environments but also designed for IP surveillance networks, this series switch offers easy device discovery and user authentication through the one-click Surveillance VLAN setting and Auto-Enrollment. (Page 12)



**Wide Temperature Range**

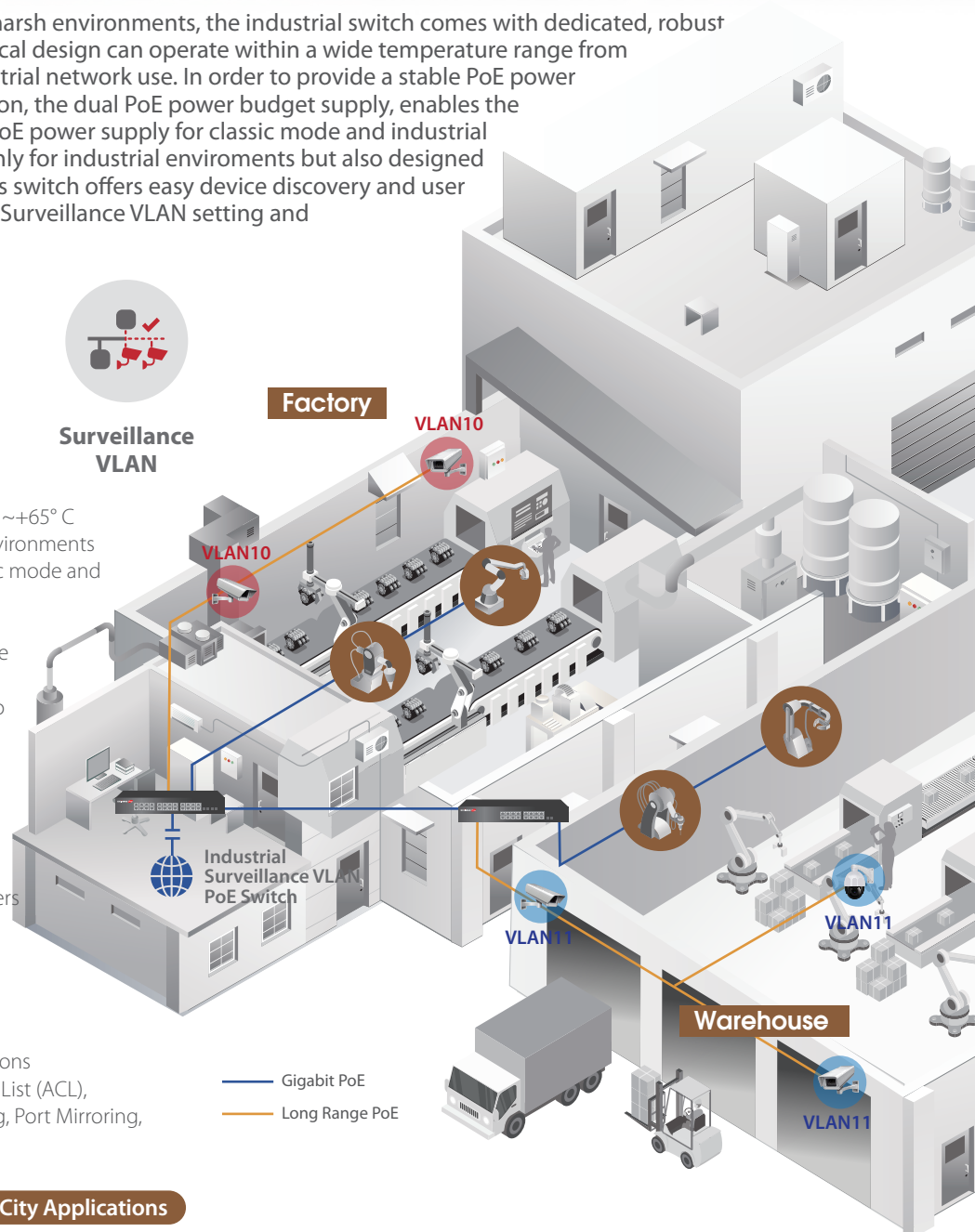


**Dual PoE Power Supply**



**Surveillance VLAN**

- Wide operating temperature range of -20° ~+65° C (-4° ~+149° F) for industrial or extreme environments
- Dual PoE power budget supplies for classic mode and industrial mode (default)
- One-click to create Surveillance VLAN and auto-discover, auto-enrolled IP surveillance devices all at once
- Dedicated Intelligent Thermal Controller to control fan speeds for power saving and noise reduction
- PoE powered devices (PD) alive check to enhance the reliability of the network
- Dual-power-supply and dual-firmware-image for robust failover mechanisms
- Guaranteed PoE long distance to 200 meters
- Power backfeed protection to avoid damaging the PoE ports
- IP Surveillance VLAN and Voice VLAN to enhance video and voice quality
- DHCP snooping to protect the integrity of the legitimate DHCP server and its operations
- Supports SNMP v1/v2c/v3, Access Control List (ACL), QoS, 802.1Q VLAN, IPv4/IPv6, Port Trunking, Port Mirroring, IGMP v1/v2/v3 Snooping and etc.



## Harsh Environments in IIoT and Smart City Applications



06 Manufacturing, Automotive



Transportation, Smart City



Energy Plant



Factory Automation



# SMB IP Surveillance Long Range Solution

Designed for IP surveillance networks, this series switch offers easy device discovery and user authentication through the one-click Surveillance VLAN setting and Auto-Enrollment. The switch also offers a guaranteed power and data transmission speed of 10Mbps over 200 meters, making it ideal for remote network devices and IP cameras.

With advanced layer 2 management features such as SNMP v1/v2c/v3, Dual Firmware, Access Control List (ACL), DHCP Snooping, QoS, CoS, STP, 802.1Q VLAN, IPv4/IPv6, Port Trunking, IGMP v1/v2/v3 Snooping and Port Mirroring, this switch ensures reliable, secure, and scalable network performance for your business. The user-friendly web-based management interface allows for easy and fast network configuration. (Page 15)



### Auto-Created Surveillance VLAN

One-click "Config. Reload" button to initialize Surveillance VLAN for smooth and secure video transmission.



### Auto Discovery

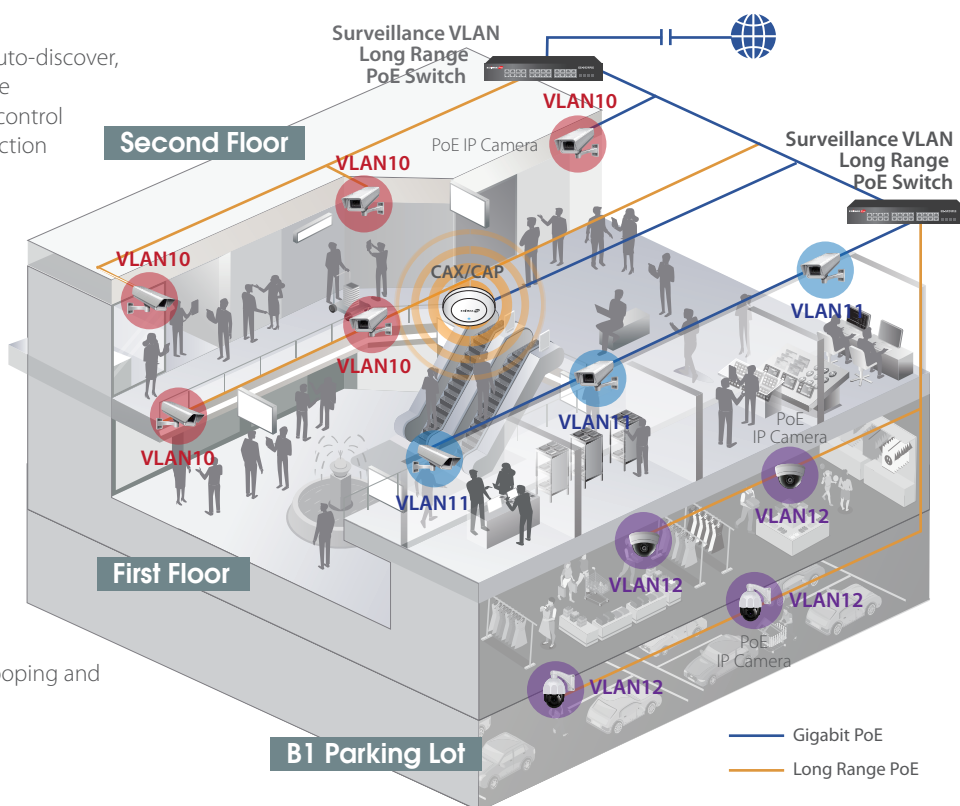
It gives you the flexibility to choose optimal products for your needs without being locked into a specific brand by auto discovery functions.



### Auto Enrollment

When IP cameras on a network are discovered, they will be added to the Surveillance VLAN automatically.

- One-click to create Surveillance VLAN and auto-discover, auto-enrolled IP Surveillance devices at once
- Dedicated Intelligent Thermal Controller to control fan speeds for power saving and noise reduction
- PoE powered devices (PD) alive check to enhance the reliability of the network
- Dual-firmware image for robust failover mechanisms
- Guaranteed PoE long distance to 200 meters
- Power backfeed protection to avoid damaging the PoE ports
- IP Surveillance VLAN and Voice VLAN to enhance video and voice quality
- DHCP snooping to protect the integrity of the legitimate DHCP server and its operations
- IEEE 802.3af/at PoE compliant, up to 30W per port
- Supports SNMP v1/v2c/v3, Access Control List (ACL), QoS, 802.1Q VLAN, IPv4/IPv6, Port Trunking, Port Mirroring, IGMP v1/v2/v3 Snooping and etc.



### IP Surveillance Long Range Applications



Office Spaces/  
Business Buildings



Residential Buildings/  
Community



Shopping Centers/Hotels/  
Hospitals/Campus

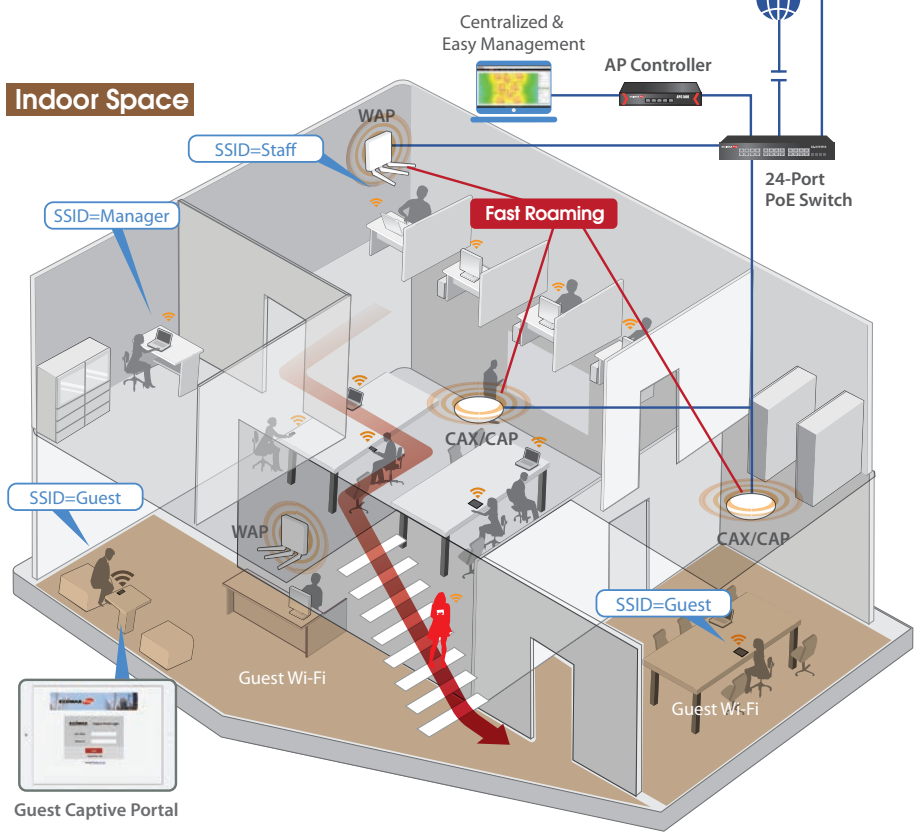
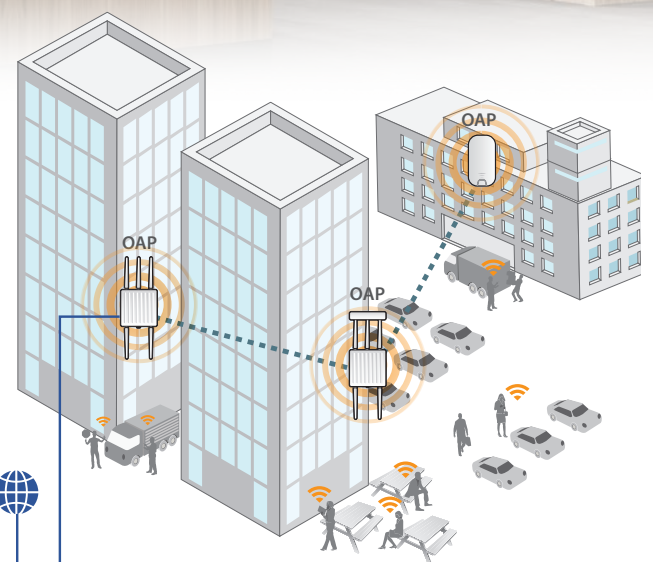


Airports/Transportation  
Stations/Parking Lots



# Enterprise & SMB Solution

Enterprise/SMB network infrastructure solution (A combination of wired and wireless infrastructure) is essential for businesses around the world and has become a real, cost-effective alternative to traditional Ethernet networks. Smartphone, tablet and laptop use has exploded, with devices becoming more powerful and affordable than ever before. Employees, clients and customers not only expect to connect without wires, but depend on it. And your business depends on it. Effective wireless solutions improve productivity and provide strategic advantage. Business-critical applications can be accessed across an entire organization, and traditional departmental boundaries can be extended for new levels of collaboration, co-working and information flow. Business is faster, better and simply more efficient.



## Outdoor Space

— Gigabit Ethernet    - - - - WDS Link

### Wireless AP:

- Wide Coverage & High Sensitivity for Wide Coverage Across Large Spaces
- Wi-Fi Main / Guest Multiple SSID with Bandwidth Management
- 802.11r/k Fast Roaming for Users Room Smoothly between APs without Lag or Interruption
- High Density Supports up to 200 Users Simultaneously (100 Users per Band)
- Guest Captive Portal for Free Hotspot
- Complete Indoor & Outdoor Portfolio
- AP Controller Manages up to 200 CAX/CAP/WAP/OAP Series APs with Flexibility

### Wired Switch:

- Rich L2 Features PoE Managed Switch
- PoE Centralization with PD alive Check
- Power Backfeed Protection to Avoid Damaging the Switch
- Long Range PoE Mode Provides Extended Power and Data Delivery Distance to 200 Meters (656 ft.)

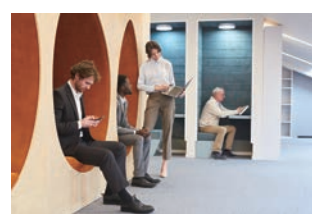
## Business Applications



08 Working Area/Meeting Room



Reception / Lobby



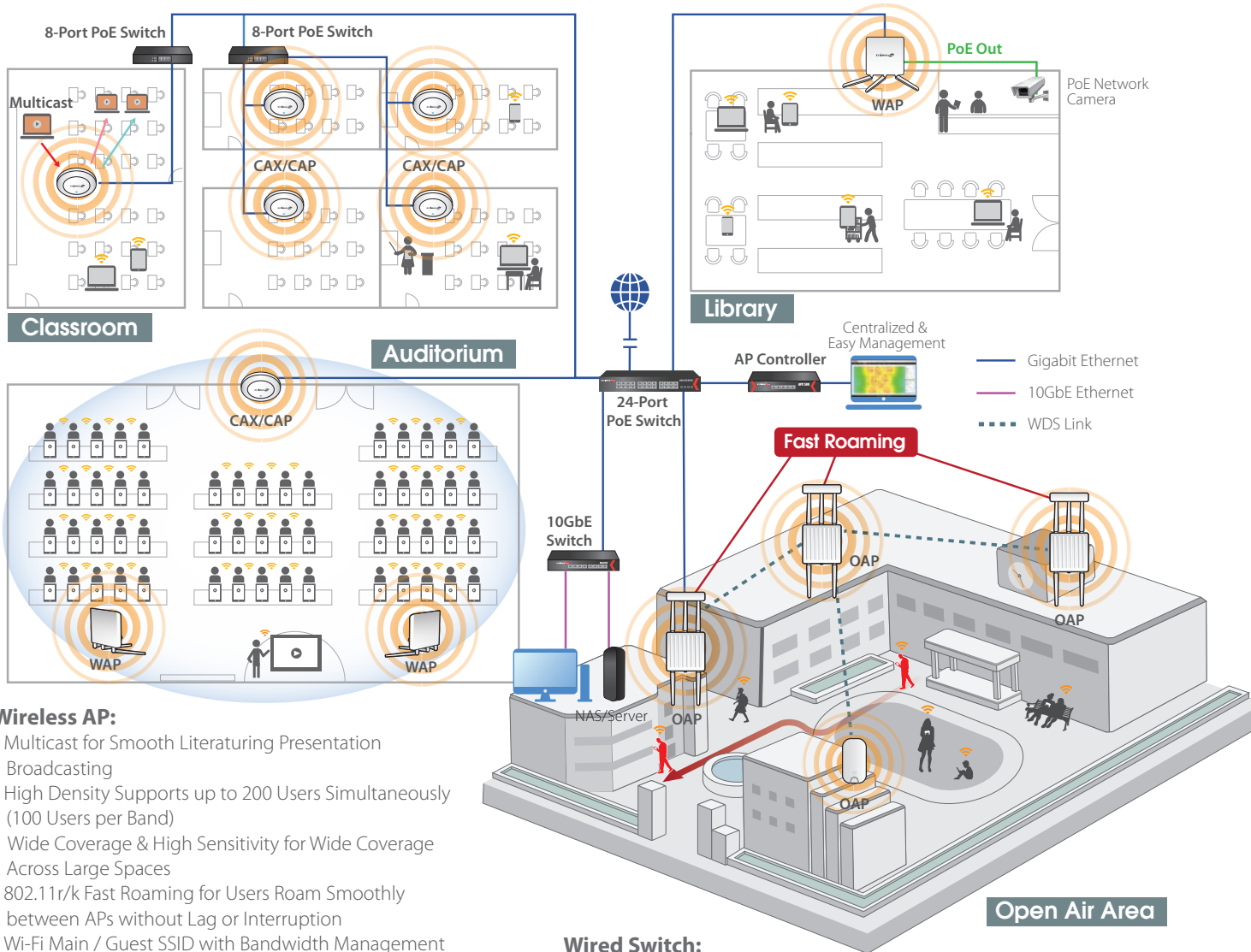
Corridor/ Stairway



Outdoor

# Education Solution

The evolution and modernization of learning environments is underway with networking technology becoming as indispensable as traditional textbooks. The benefits of high-speed, high-performance, reliable wireless and wired networks deployment are enormous with smart, interactive classrooms, new teaching tools, digital materials, and enhanced interactive learning resources. And technological proficiency is an increasingly critical factor in young students' higher education and employment prospects later in life.



## Education Applications



Class Room / Auditorium



Library



Computer Lab



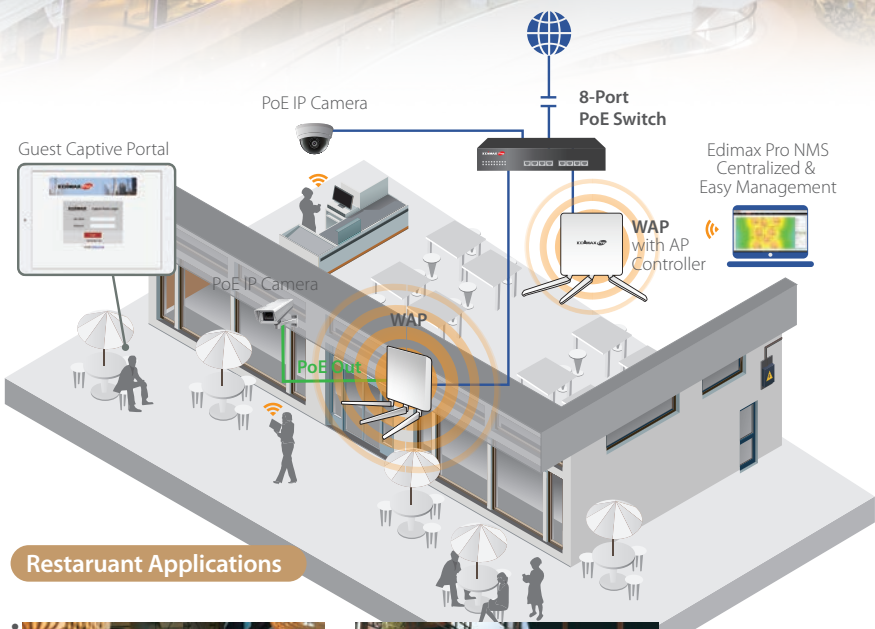
Open Air Area



# Hospitality Solution

Hospitality venues of retailing need more reliable network infrastructure at a lower cost of ownership, or risk being left behind. And user-friendly Wi-Fi is a further opportunity to differentiate your business. For restaurants, coffee shops, supermarket, retailers, chain stores, and supermarkets, guests expect Wi-Fi access as the norm. Wi-Fi hotspots are a huge factor in customer satisfaction and wireless instability, interference and connectivity issues are just not an option anymore in an industry where details matter.

And with better communication between your teams, secure administration tools, and better connectivity for wireless POS systems or handheld order and check-in devices, you can improve operational efficiency and reduce costs across your organization.



## Restaurant Applications



Indoor



Outdoor

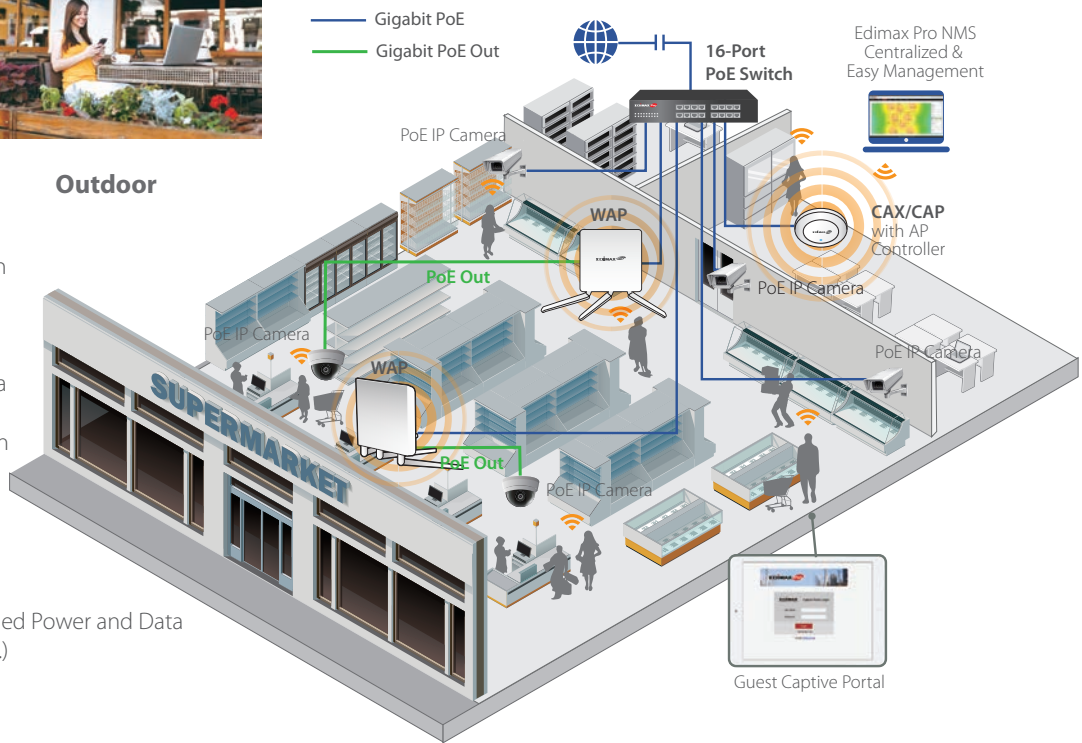
### Wireless AP:

- Wi-Fi Main / Guest SSID with Bandwidth Management
- Guest Captive Portal for Free Hotspot
- Complete Indoor & Outdoor Portfolio
- PoE Out (WAP1750) Supplies Power to a PoE Device
- Wi-Fi AP (CAX/CAP/WAP) with Built-in Free NMS

### Wired Switch:

- Rich L2 Features PoE Managed Switch
- PoE Centralization with PD alive Check
- Long Range PoE Mode Provides Extended Power and Data Delivery Distance to 200 Meters (656 ft.)

## Retailing Applications



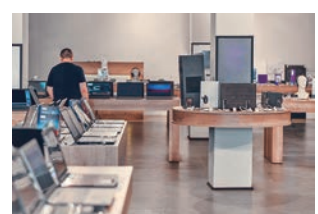
Supermarket



Grocery Store



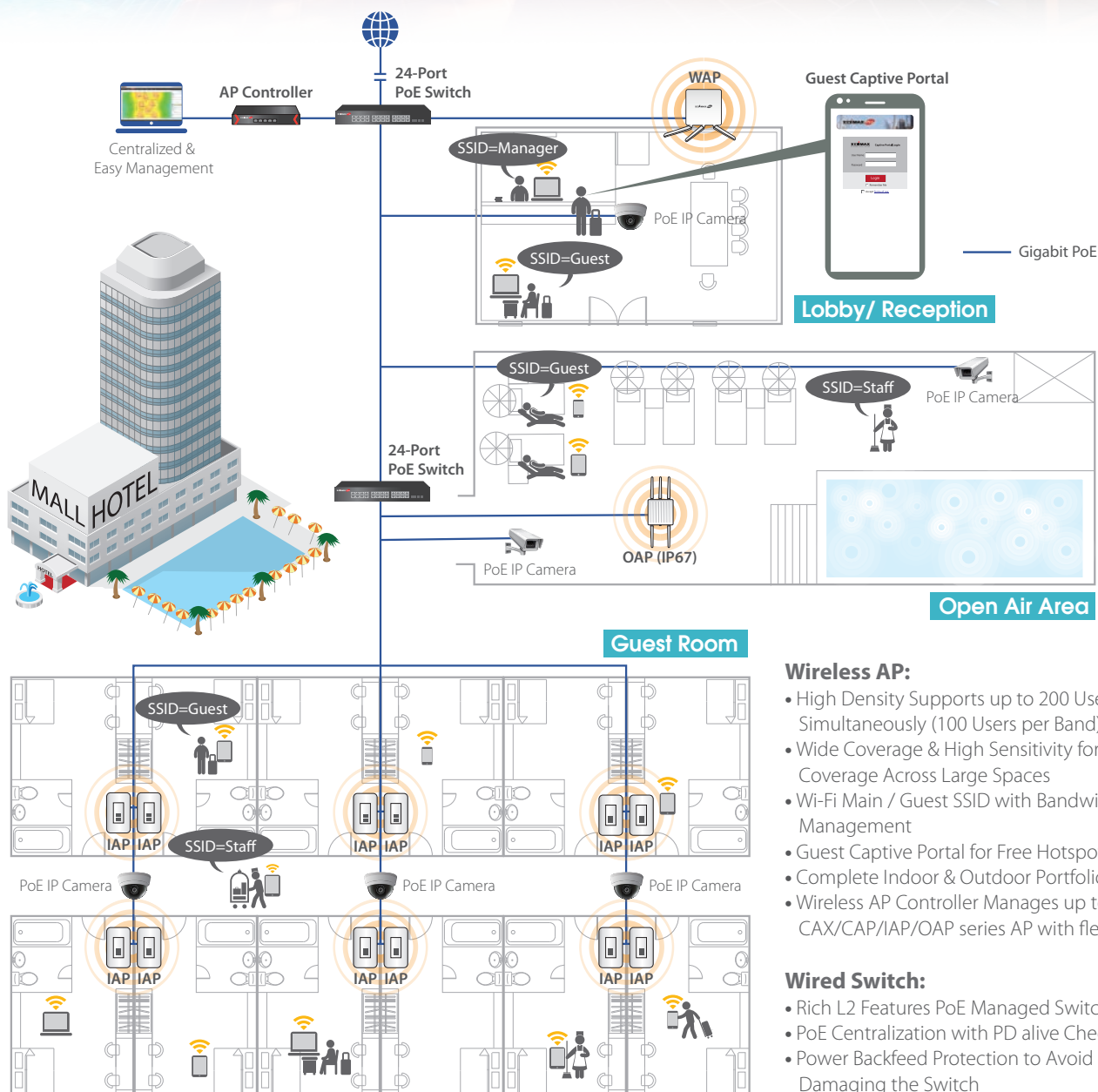
Retail Shop



Chain Store

# Hotel Solution

Guests often travel with 2 or 3 Wi-Fi devices each, and Wi-Fi is an important factor for would-be hotel guests choosing where to stay. These days, free high-speed Wi-Fi is simply expected as standard. Personalize the guest experience, build customer loyalty and even offer targeted marketing. But Wi-Fi solutions aren't just about meeting the surge in customer demand. It's about improving operational efficiency in your organization and reducing costs. Edimax offers completed Wi-Fi Access Points from indoor to outdoor and various L2 Managed Switches for reliable and stable connectivity to fulfill the needs of all your networking requirements in the hotel industry.



## Wireless AP:

- High Density Supports up to 200 Users Simultaneously (100 Users per Band)
- Wide Coverage & High Sensitivity for Wide Coverage Across Large Spaces
- Wi-Fi Main / Guest SSID with Bandwidth Management
- Guest Captive Portal for Free Hotspot
- Complete Indoor & Outdoor Portfolio
- Wireless AP Controller Manages up to 200 CAX/CAP/IAP/OAP series AP with flexibility

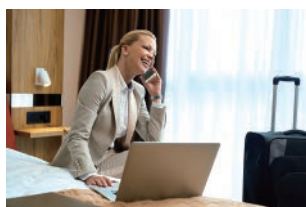
## Wired Switch:

- Rich L2 Features PoE Managed Switch
- PoE Centralization with PD alive Check
- Power Backfeed Protection to Avoid Damaging the Switch
- Long Range PoE Mode Provides Extended Power and Data Delivery Distance to 200 Meters (656 ft.)

## Hotel Applications



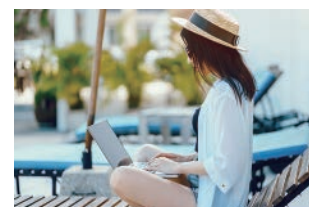
Reception/Lobby



Guest Room



Restaurant / Conference Room



Open Air Area

# Industrial Specialized Dual PoE Power Budget

Durable & Reliable Connection for Surveillance and SMB Harsh Environments

To provide a stable PoE power supply and reliable network connection, the dual PoE power budget supply, enables the network administrator to adjust the PoE power supply with durability and longer product life cycle to work in the harsh environments.



Wide Temperature Range



Dual PoE Power Supply



Surveillance VLAN



Long Range Mode



PoE PD Alive Check



Dual Firmware



PoE Backfeed Protection



Industrial PoE Web Smart Switch			
Model No.	IGS-5654PLX	IGS-5428PLC	IGS-5218PLC
Gigabit Ethernet			
Total Port Count	54-Port	28-Port	18-Port
Description	Industrial Surveillance VLAN 54-Port Gigabit PoE+ Web Smart Switch with 4 10GbE SFP+ Ports	Industrial Surveillance VLAN 28-Port Gigabit PoE+ Web Smart Switch with 4 Gigabit RJ45/SFP Combo Ports	Industrial Surveillance VLAN 18-Port Gigabit PoE+ Web Smart Switch with 2 Gigabit RJ45/SFP Combo Ports
Port/Module Slots			
GbE / FE	48 x GbE	24 x GbE	16 x GbE
SFP/SFP+ Slot	4 x 10GbE SFP+	-	-
GbE Combo RJ-45/SFP	-	4	2
PoE Port	48	24	16
Console Port	v	v	-
PoE Power Management			
IEEE 802.3af/at	v	v	v
Power Budget Management UI	v	v	v
PD Alive Check	v	v	v
Overloading Protecting	v	v	v
Power Backfeed Protection	v	v	v
Long Range PoE 200M*	v	v	v
Total PoE Power Budget	Industrial Mode: 400W; Classic Mode: 800W	Industrial Mode: 300W; Classic Mode: 500W	Industrial Mode: 280W; Classic Mode: 360W
Performance			
Switch Capacity / Backplan	216Gbps	56Gbps	36Gbps
Forwarding Rate	160.7Mpps	41.6Mpps	26.7Mpps
MAC Address	32K	8K	8K
Jumbo Frame	12KB	9KB	9KB
Packet Buffer	16Mb	4.1Mb	4.1Mb
Management			
Web-Based	v	v	v
Features			
Surveillance VLAN Auto-Enrollment	v	v	v
IEEE 802.1q VLAN	v	v	v
MTP/RSTP/STP	v	v	v
SNMP v1/v2c/v3	v	v	v
Trunking Group	8	8	8
LACP/Static LAG	v	v	v
QoS/Priority Queues	v	v	v
IGMP Snooping	v	v	v
LLDP, LLDP-MED	v	v	v
Port Mirroring	v	v	v
Loopback Detection	v	v	v
Access Control List (ACL)	v	v	v
Dual Firmware	v	v	v
Voice VLAN	v	v	v
DHCP Snooping	v	v	v
Others	Redundant Dual Power Input	-	-
Operating Temperature	Industrial Mode: -20 ~ 65°C Classic Mode: 0 ~ 40°C	Industrial Mode: -20 ~ 65°C Classic Mode: 0 ~ 40°C	Industrial Mode: -20 ~ 65°C Classic Mode: 0 ~ 40°C
Fan Type	3 x Fans with Intelligent Thermal Controller	2 x Fans	2 x Fans
Power Type	Internal Power	Internal Power	Internal Power
Physical			
Dimension (LxWxH)	441x330x44mm	441x270x44mm	441x196x44mm
Mounting Type	Rack Mount	Rack Mount	Rack Mount

\* Guaranteed PoE long distance to 200 meters.

# Robust Industrial Managed Switch

Durable, Reliable, Flexible & Smart Network for Harsh Environments

Certified to withstand harsh environment and provides reliable network connection, the industrial switch is ideal for industrial networks such as automotive, factory automation, oil and gas, mining, military, transportation, substation, energy and outdoor applications of railways, roads, tunnels, smart cities, city surveillance and traffic monitoring.



**IEC Certified**  
 • Vibration  
 • Shock  
 • Free Fall  
 • EMC & EMS



IGS-5416P, IGS-5408P, IGS-5208



Certified Ruggedized Design



High/Low Temperature Resistance



Reliable Dual Redundancy



Model No.	IGS-5416P	IGS-5408P	IGS-5208
	Gigabit Ethernet		
Total Port Count	20-Port	12-Port	10-Port
Description	Industrial 16-Port Gigabit PoE+ Web Managed Switch	Industrial 8-Port Gigabit PoE+ Web Managed Switch with 4 SFP Slots	Industrial 8-Port Gigabit Web Managed Switch with 2 SFP Slots
<b>Hardware</b>			
10/100/1000Base-T	16	8	8
SFP/SFP+ Slot	4 x SFP	4 x SFP	2 x SFP
PoE Port	8	8	-
Console Port	v	v	v
USB Port	1x USB 2.0 storage for firmware update, configuration backup, restore, boot up and system log		
DI/DO	DI x 1, DO x 1	DI x 1, DO x 1	DI x 1, DO x 1
Power Redundancy	Redundant Dual DC 48V-57V	Redundant Dual DC 48V-57V	Redundant Dual DC 12V-48V
Reserve Polarity Protection	v	v	v
Overload Current Protection	v	v	v
Alarm Contact	1A@24VDC	1A@24VDC	1A@24VDC
Housing	Ruggedized aluminum alloy case, IP30-rated		
Operation Temperature Range	-40 ~ 75°C	-40 ~ 75°C	-40 ~ 75°C
MTBF (Mean Time Between Failure)	>100,000 hours	>100,000 hours	>100,000 hours
Fan Type	Fanless	Fanless	Fanless
<b>Performance</b>			
Switching Capacity / Backplane	40Gbps	24Gbps	20Gbps
Forwarding Rate (Max.)	29.76Mpps	17.85Mpps	14.88Mpps
MAC Address	16K	16K	16K
Jumbo Frame	16KB	16KB	16KB
Packet Buffer	12Mb	12Mb	12Mb
<b>PoE Power Management</b>			
Power Budget Management UI	v	v	-
PD Alive Check	v	v	-
PoE Scheduling	v	v	-
Total PoE Power Budget	240W	240W	-
<b>Management</b>			
Web Based Management	v	v	v
Telnet	v	v	v
SNMP (v1/v2c/v3)	v	v	v
<b>Physical</b>			
Dimension (LxWxH)	90.8 x 145 x 113 mm	72.2 x 145 x 113 mm	72.2 x 145 x 113 mm
Mounting Type	DIN-Rail	DIN-Rail	DIN-Rail
<b>Certification &amp; Standard</b>			
Railway, Vibration, Shock, Free-Fall	EN50121-4, IEN-EC60068-2-6, IEC60068-2-27, IEC60068-2-32		
EMC	61000-6-2, 61000-6-4	61000-6-2, 61000-6-4	61000-6-2, 61000-6-4
EMS	IEC61000-4-2 (ESD), IEC61000-4-3 (RS), IEC61000-4-4 (EFT), IEC61000-4-5 (Surge), IEC61000-4-6 (CS), IEC61000-4-8 (Magnetic Field)		
EMI	CE, FCC	CE, FCC	CE, FCC
Standards	IEEE 802.1Q VLAN, IEEE 802.1D STP, IEEE 802.1w RSTP, IEEE 802.1s MSTP, IEEE 802.3ad LACP, IEEE 802.1AB LLDP, ITU-T G.8032/Y.1344 ERPS		

## For Harsh Environments in Industrial IoT (IIoT) and Smart City



Manufacturing, Automotive



Energy Plant



Transportation, Smart City



Factory Automation



## Robust Industrial Unmanaged Switch

Durable, Reliable & Flexible Network for Harsh Environments

The EDIMAX Industrial DIN-Rail Unmanaged Switch comes with PoE+ Gigabit high-speed connections with IP30-rated, fanless rugged industrial design and rich features. The industrial switches offer easy efficient data transfer, plug-and-play, flexible-deployment, cost-effective, energy-efficient solution for various harsh industrial Networks.



- 6KV Lightning Surge Protection
- Wide Range Temperature
- Long Range Guaranteed 200M
- Reliable Power Redundancy
- QoS Improved Traffic Efficiency
- Flexible DIN-Rail and Wall Mount



IGS-1210P V2, IGS-1105P, IGS-1005

Model No.	IGS-1210P V2 <span style="color: red;">New</span>	IGS-1105P	IGS-1005
	Gigabit Ethernet		
Total Port Count	8-Port	5-Port	5-Port
Description	Industrial 10-Port Gigabit PoE+ Switch with 2 SFP Ports	Industrial 5-Port Gigabit PoE+ Switch with 1 SFP Port	Industrial 5-Port Gigabit Switch
<b>Hardware</b>			
10/100/1000Base-T	8	4	5
SFP/SFP+ Slot	2 x SFP	1 x SFP	-
PoE Port (IEEE802.11at/af)	Port 1-8	Port 1-4	-
6 KV Surge Protection	Port 1-8	Port 1-4	Port 1-5
Backbeed Protection	v	v	-
Power Redundancy	Redundant Dual DC 48V-55V	Redundant Dual DC 48V-55V	Redundant Dual DC 12V-48V
P-Fail	v	v	v
Watch Dog	v	-	-
Overload Current Protection	v	v	v
PoE Power Budget	240W	120W	-
Long Range 200 Meters+	v	v	v
Housing	Metal Case, IP30-rated	Metal Case, IP30-rated	Metal Case, IP30-rated
DC IN (48-55V)	v	v	-
Operation Temperature Range	-20 ~ 70°C	-20 ~ 70°C	-20 ~ 70°C
MTBF (Mean Time Between Failure)	>100,000 hours	>100,000 hours	>100,000 hours
Fan Type	Fanless	Fanless	Fanless
<b>Performance</b>			
Switching Capacity/Backplane	20Gbps	10Gbps	10Gbps
Forwarding Rates (Max.)	14.88Mpps/1.5M bit	7.44Mpps	7.44Mpps
MAC Address	4K	2K	2K
Jumbo Frame	9KB	9KB	9KB
Packet Buffer	1.5Mb	2Mb	2Mb
QoS (IEEE 802.1p)	v	v	v
<b>Physical</b>			
Dimension (LxWxH)	210 x 45 x 160.6 mm	180 x 32 x 130 mm	127.5 x 30 x 83.6 mm
Mounting Type	DIN-Rail	DIN-Rail	DIN-Rail
<b>Others</b>			
Certification	CE/FCC/BSMI		



# One-Click Surveillance VLAN Setting & Auto-Enrollment

## Tailor-made Features for Surveillance and SMB

Designed for IP surveillance networks, this switch offers easy device discovery and user authentication through the one-click Surveillance VLAN setting and Auto-Enrollment. Easily setup and configure surveillance networks with ease of mind.



Surveillance VLAN



Long Range Mode



PoE PD Alive Check



Voice IP VLAN



DHCP Snooping



Dual Firmware



PoE Backfeed Protection



PoE Web Smart Switch				
Model No.	GS-5424PLX V2	GS-5424PLC V3	GS-5216PLC	GS-5210PL
Gigabit Ethernet				
Total Port Count	28-Port	28-Port	18-Port	12-Port
Description	Surveillance VLAN 28-Port Gigabit PoE+ Long Range Web Smart Switch with 4 10GbE SFP+ Ports	Surveillance VLAN 28-Port Gigabit PoE+ Long Range Web Smart Switch with 4 Gigabit RJ45/SFP Combo Ports	Surveillance VLAN 18-Port Gigabit PoE+ Long Range Web Smart Switch with 2 Gigabit RJ45/SFP Combo Ports	Surveillance VLAN 12-Port Gigabit PoE+ Long Range Web Smart Switch with 2 Gigabit RJ45 Ports and 2 SFP Ports
Port/Module Slots				
GbE / FE	24 x GbE	24 x GbE	16 x GbE	10 x GbE
SFP/SFP+ Slot	4 x 10GbE SFP+	-	-	2 x SFP
GbE Combo RJ-45/SFP	-	4	2	-
PoE Port	24	24	16	8
Console Port	v	v	-	-
PoE Power Management				
IEEE 802.3af/at	v	v	v	v
Power Budget Management UI	v	v	v	v
PD Alive Check	v	v	v	v
Overloading Protecting	v	v	v	v
Power Backfeed Protection	v	v	v	v
Long Range PoE 200M*	v	v	v	v
Total PoE Power Budget	400W	400W	280W	110W
Performance				
Switching Capacity / Backplane	128Gbps	56Gbps	36Gbps	24Gbps
Forwarding Rate (Max.)	95.2Mpps	41.6Mpps	26.7Mpps	17.8Mpps
MAC Address	16K	8K	8K	8K
Jumbo Frame	12KB	9KB	9KB	9KB
Packet Buffer	12Mb	4.1Mb	4.1Mb	4.1Mb
Management				
Web-Based	v	v	v	v
Features				
Surveillance VLAN Auto-Enrollment	v	v	v	v
IEEE 802.1q VLAN	v	v	v	v
MTP/RSTP/STP	v	v	v	v
SNMP v1/v2c/v3	v	v	v	v
Trunking Group	8	8	8	8
LACP/Static LAG	v	v	v	v
QoS/Priority Queues	v	v	v	v
IGMP Snooping	v	v	v	v
LLDP, LLDP-MED	v	v	v	v
Port Mirroring	v	v	v	v
Loopback Detection	v	v	v	v
Access Control List (ACL)	v	v	v	v
Dual Firmware	v	v	v	v
Voice VLAN	v	v	v	v
DHCP Snooping	v	v	v	v
TACACS+, RADIUS	v	v	v	v
Others	Power Saving with Intelligent Thermal Control	Power Saving with Intelligent Thermal Control	4-digit LED display for PoE power status	4-digit LED display for PoE power status
Fan Type	2 x Fans with Intelligent Thermal Controller	2 x Fans with Intelligent Thermal Controller	1 x Fan with hot-swappable fan tray	Fanless
Power Type	Internal Power	Internal Power	Internal Power	Internal Power
Physical				
Dimension (LxWxH)	441x270x44mm	441x270x44mm	441x196x44mm	330x230x44mm
Mounting Type	Rack Mount	Rack Mount	Rack Mount	Rack Mount

\* Guaranteed PoE long distance to 200 meters.

# Simplify the Management. Optimize the Connection

## Functionality, Security and Manageability at a Low Cost with Great Value

The EDIMAX Pro Web Smart Managed Switches goes beyond plug-and-play connectivity, offering convenient of full management capabilities and security features that effortlessly fits into sophisticated IT systems.



- Long Range Mode
- PoE PD Alive Check
- Voice IP VLAN
- DHCP Snooping
- Dual Firmware
- PoE Backfeed Protection



PoE Web Smart Switch					
Model No.	GS-5654PLX V2	GS-5208PLG V2	GS-5210PLG	GS-3008P	GS-3005P
Gigabit Ethernet					
Total Port Count	54-Port	10-Port	10-Port	8-Port	5-Port
Description	Long Range 54-Port Gigabit PoE+ Web Smart Switch with 6 SFP + 10 Gigabit Ports	Long Range 8-Port Gigabit PoE+ Web Smart Switch with 2 SFP Ports	Long Range 10-Port Gigabit PoE+ Web Smart Switch with 1 SFP Ports	Long Range 8-Port Gigabit PoE+ Web Smart Switch with 4 PoE+ Ports	Long Range 5-Port Gigabit PoE+ Web Smart Switch with 4 PoE+ Ports
Port/Module Slots					
GbE / FE	48 x GbE	8 x GbE	9 x GbE	8 x GbE	5 x GbE
SFP/SFP+ Slot	6 x 10GbE SFP+	2 x SFP	1 x SFP	-	-
1000Base Combo RJ-45/SFP	-	-	-	-	-
PoE Port	48	8	8	4	4
Console Port	v	-	-	-	-
PoE Power Management					
IEEE 802.3af/at	v	v	v	v	v
Power Budget Management UI	v	v	v	v	v
PD Alive Check	v	-	-	-	-
Overloading Protecting	v	v	v	v	v
Power Backfeed Protection	v	v	v	v	v
Long Range PoE 200M*	v	v	v	v	v
Total PoE Power Budget	400W	85W	100W	60W	60W
Performance					
Packet Buffer, bit	16M	1.5M	1.5M	1.5M	1M
MAC Address	32K	4K	4K	4K	4K
Jumbo Frame, Bytes	12K	9.2K	9.2K	9K	9K
Backplane bandwidth	216Gbps	20Gbps	20Gbps	16Gbps	10Gbps
Forwarding Rate	160.7Mpps	14.8Mpps	14.8Mpps	11.9Mpps	7.4Mpps
Management					
Web-Based	v	v	v	v	v
Features					
IEEE 802.1q VLAN	v	v	v	v	v
IEEE 802.1d/w STP/RSTP	v	-	-	-	-
SNMP v1/v2c/v3	v	-	-	-	-
Trunking Group	8	8	8	1	1
LACP	v	v	v	v	v
QoS/Priority Queues	v	v	v	v	v
IGMP Snooping	v	v	v	v	v
Storm Control	v	v	v	v	v
Port Mirroring	v	v	v	v	v
Loopback Detection	v	v	v	v	v
Access Control List (ACL)	v	-	-	-	-
Dual Firmware	v	-	-	-	-
Voice VLAN	v	-	-	-	-
DHCP Snooping	v	-	-	-	-
LLDP, LLDP-MED	v	-	-	-	-
Fan Type	4 x Fans with Intelligent Thermal Controller	Fanless	Fanless	Fanless	Fanless
Power Type	Internal Power	Internal Power	Internal Power	External Power	External Power
Physical					
Dimension (LxWxH)	441x330x44mm	265x184x44mm	265x184x44mm	240x105x26mm	193x84x26mm
Mounting Type	Rack Mount	Rack Mount	Rack Mount	Wall Mount	Wall Mount

\* Guaranteed PoE long distance to 200 meters.

# Guaranteed PoE Long Distance to 200 Meters

## Long Range Flexible PoE Deployment, Exceptional for IP Surveillance Solution

The EDIMAX dedicated long range PoE switches supports PoE-enabled devices, saving more money by reducing power cable deployment costs, in addition with easy hardware DIP switches that can further setup port-based VLAN (port isolation) and QoS.



Guarantee PoE Distance 200M



Easy Hardware QoS



Innovative Port-Based VLAN



Flexible PoE Deployment



PoE Unmanaged Switch			
Model No.	GS-1008P V2 / GS-1008PL V2	ES-1008P V2	ES-5104PH V2
	Gigabit Ethernet	Fast Ethernet	
Total Port Count	8-Port	8-Port	5-Port
Description	8-Port Gigabit PoE+ Switch with DIP Switch	8-Port Fast Ethernet PoE+ Switch with DIP Switch	5-Port Fast Ethernet PoE+ Switch with 4 PoE+ Ports & DIP Switch
Port/Module Slots			
GbE / FE	8 x GbE	8 x FE	5 x FE
PoE Port	8	8	4
PoE Features			
PoE Port(IEEE802.11at/af)	v	v	v
PD Classification	v	v	v
Overloading Protecting	v	v	v
Long Range PoE Extend Mode	v (DIP Switch)	v (DIP Switch)	v (DIP Switch)
Total PoE Power Budget	130W / 70W	130W	60W
Performance			
Packet Buffer, bit	1.5M	448K	448K
MAC Address	4K	1K	1K
Jumbo Frame, Bytes	9K	-	-
Features			
IEEE 802.1q VLAN	v (DIP Switch)	v (DIP Switch)	v (DIP Switch)
IEEE 802.3az Energy Efficient Ethernet	v	v	v
QoS	v (DIP Switch)	v (DIP Switch)	v (DIP Switch)
Long Range PoE 200M*	v (DIP Switch)	v (DIP Switch)	v (DIP Switch)
Fan Type	Fanless	Fanless	Fanless
Power Type	Internal Power	Internal Power	External Power
Physical			
Dimension (LxWxH)	265x184x44mm	265x184x44mm	121x75x26mm
Mounting Type	Rack Mount	Rack Mount	Wall Mount

\* Guaranteed PoE long distance to 200 meters.

Web Smart Switch				
Model No.	XGS-5008	GS-5654LX / GS-5424 LX	GS-5424G	GS-5008E
	10 Gigabit	Gigabit Ethernet		
Total Port Count	8-Port	54-Port / 24-Port	28-Port	8-Port
Description	8-Port 10GbE Web Smart Switch	54-Port / 24-Port Gigabit Web Smart Switch with 6 / 4 10GbE SFP+ Ports	24-Port Gigabit Web Smart Switch with 4 SFP Ports	8-Port Gigabit Web Smart Switch
Port/Module Slots				
GbE / FE	8 x 10 GbE	48 / 24 x GbE	24 x GbE	8 x GbE
SFP/SFP+ Slot	-	6 / 4 x 10GbE SFP+	4 x SFP	-
Performance				
Packet Buffer, bit	16M	16M / 12M	4.1M	1.53M
MAC Address	16K	32K / 16K	8K	4K
Jumbo Frame, Bytes	9K	12K	9K	9K
Management				
Web-Based	v	v	v	v
Features				
IEEE 802.1q VLAN	v	v	v	v
6KV Surge Protection	-	v	v	-
Trunking Group	4	8	8	8
QoS	v	v	v	v
IGMP Snooping	v	v	v	v
Storm Control	v	v	v	v
Loopback Detection	v	v	v	v
Fan Type	1 x Fan with hot-swappable fan tray	3 x Fans with Intelligent Thermal Controller / Fanless	Fanless	Fanless
Power Type	External Power	Internal Power	Internal Power	External Power
Physical				
Dimension (LxWxH)	265x185x44mm	441x270x44mm / 441x198x44mm	440x220x44mm	155x85x26mm
Mounting Type	Rack Mount	Rack Mount	Rack Mount	Wall Mount

Unmanaged Switch			
Model No.	GS-1005BE	GS-1026 V3	GS-1024 / GS-1016 V2
	2.5 Gigabit	Gigabit Ethernet	
Total Port Count	5-Port	26-Port	24-Port / 16-Port
Description	5-Port 2.5GbE Switch	24-Port Gigabit Switch with 2 SFP Ports	24-port / 16-Port Gigabit Switch
Port/Module Slots			
GbE / FE	5 x 2.5GbE	24 x GbE	24 / 16 x GbE
SFP/SFP+ Slot	-	2 x SFP	-
Performance			
Packet Buffer, bit	12M	4.1M	4.1M
MAC Address	16K	8K	8K
Jumbo Frame, Bytes	12K	10K	10K
Features			
IEEE 802.3az Energy Efficient Ethernet	v	v	v
Fan Type	Fanless	Fanless	Fanless
Power Type	External Power	Internal Power	Internal Power
Physical			
Dimension (LxWxH)	160x110x26mm	441x131x44mm	268x160x42mm / 215x133x42mm
Mounting Type	Wall Mount	Rack Mount	Rack Mount / Wall Mount

Accessories				
Model No.	GP-203IT / GP-201IT	GP-103IT / GP-102IT	GP-101IT	
	PoE Injector			
Description	IEEE 802.3bt 2.5GbE PoE++ Injector, up to 90W/30W Metal Case, Wall-Mount	IEEE 802.3bt Gigabit PoE++ Injector, up to 90W/60W Metal Case, Wall-Mount	IEEE 802.3at Gigabit PoE+ Injector, up to 30W, Wall-Mount	
Model No.	GP-101ET	GP-101ST	MG-10G / MG-1000 Series	EA1 Series
Description	PoE Extender	PoE Splitter	SFP Transceiver	SFP+ DAC Cable
	IEEE 802.3at Gigabit PoE+ Extender	IEEE 802.3at Gigabit PoE+ Splitter	10GbE or 1GbE SFP+/SFP Modules	10GbE SFP+ Direct Attach Cable
Model No.	EN-9320SFP+ V2	EN-9320TX-E V2	EN-9225TX-E	
Description	10 Gigabit Ethernet SFP+ PCI Express Server Adapter	10 Gigabit Ethernet PCI Express Server Adapter	2.5 Gigabit Ethernet PCI Express Server Adapter	

# Superior High-Speed & Performance Wi-Fi System



AX1800 Wi-Fi 6, Pre-Configured Easy Setup, Expandable Wi-Fi

The PrimeAX 1-2-3 Wi-Fi system comes with the IEEE 802.11ax Wi-Fi 6 technology for wireless speeds up to 1800Mbps (574Mbps at 2.4GHz and 1201Mbps at 5GHz). Expect enterprise-grade performance and build quality, combined with user-friendly operation, easy deployment, super-fast wireless speed, an extensive feature set and a practical, ceiling-mount design make an ideal dual-band solution for enterprise environments.



The PrimeAX 1-2-3 2-pack kit equipped with pre-configured Master and Slave AX1800 APs achieves seamless Wi-Fi coverage and eliminates Wi-Fi dead zones. The built-in smart wizard makes network setup a breeze, you can easily configure and find your paired devices via the Device Discovery Tool which also includes security features (WPA/WPA2/WPA3 and more). What's more, the PrimeAX 1-2-3 featured AX technology such as BSS coloring, DL/UL OFDMA, DL/UL MU-MIMO, TWT (provides improvements in throughput), multi-device support, and Wi-Fi spectrum efficiency for streaming, gaming, media sharing, increases battery life efficiency for devices and reduce power consumption.

## Ordering Information:

### 2-pack:

PrimeAX 1-2-3 (Master) & PrimeAX 1-2-3 (Slave)

### 1-pack:

PrimeAX +1



## Smart and Easy Setup!



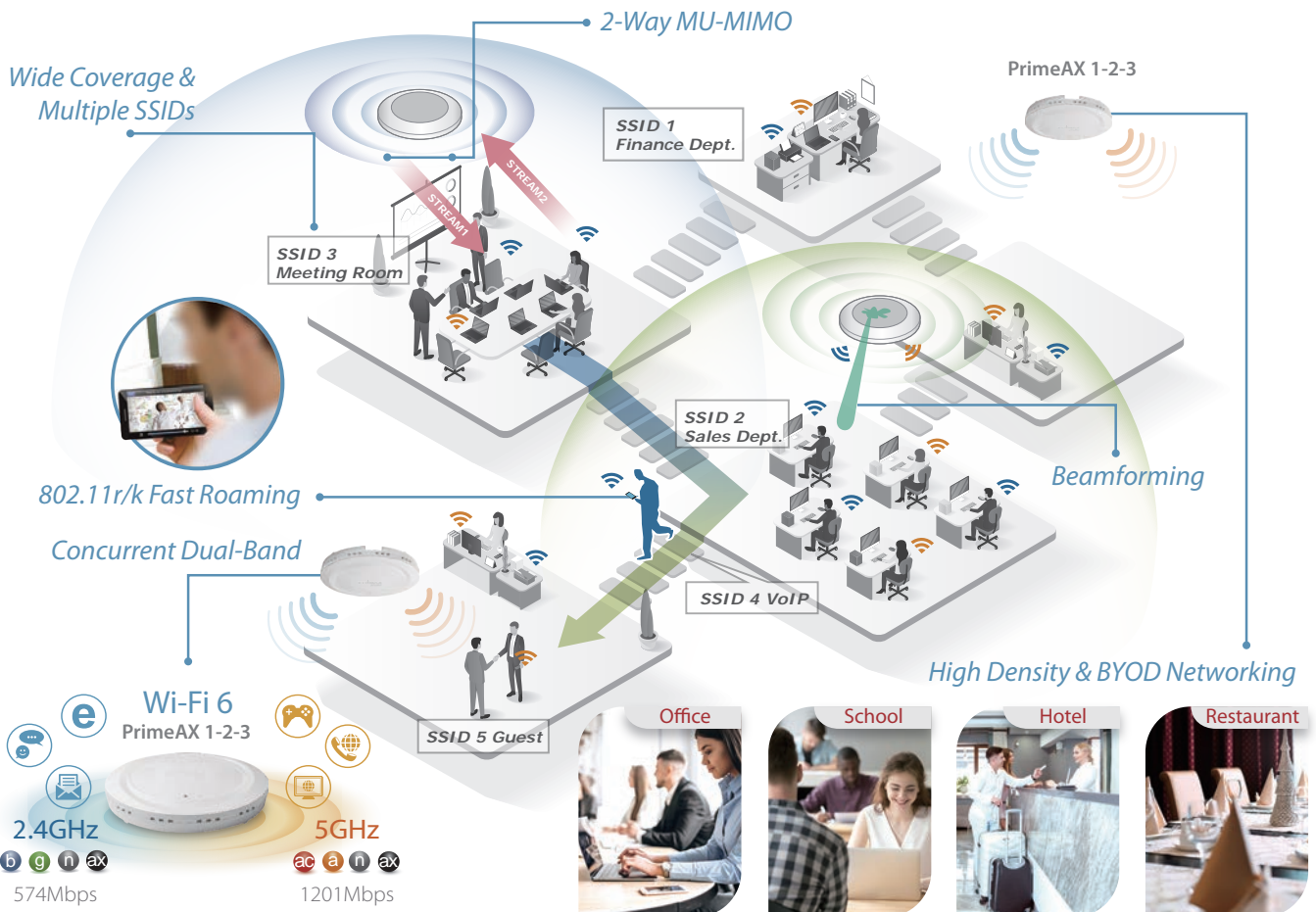
1. Power on the PrimeAX 1-2-3 APs and connect the APs to the existing network switch. (APs can be powered on by PoE)
2. Access the Smart Wizard with a web browser. (Dedicated IP address listed on the label.)
3. Follow the Smart Wizard instructions to configure the Wi-Fi networks in just a few steps

## 802.11AX Technology Features and Benefits

More Capacity	Fastest Speed	Further Range	Better Efficiency	Power Saving	Reduced Interference	Pre-Configured	Smart Wizard

## Expandable Wi-Fi System

PrimeAX 1-2-3 includes 2 APs and is expandable with PrimeAX +1 Add-on AP, up to a total of 16 APs.



# Smart, Secure and Self-Managed Wi-Fi

Easy, Complete, Expandable Office Wi-Fi System for Business and Home from Indoor to Outdoor

The Office 1-2-3 Office Wi-Fi System starter kit comes with three pre-configured access points that can communicate between themselves with self-managed functions for easy setup. The system is expandable with CAP1300 Office +1 (indoor ceiling-mount)/OAP1300 Office +1 (outdoor) Add-on AP, up to a total of 16 APs with zero configuration\*. Built-in with the AP management software, no need for server or controller software and no extra license

\* Zero configuration: Once the Office 1-2-3 Master AP had been installed, the slave APs or add-on APs are automatically configured with master AP while connected to the existing network.

**OFFICE 1-2-3**



## Easy Setup!

Get Your Office Wi-Fi Up and Running in Minutes!



**1** Connect the Office 1-2-3 / Office +1 APs to the existing network via switch. (APs can be powered on by PoE)



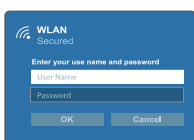
**2** Download the IP Finder utility and the system will find the Office 1-2-3 APs automatically.



**3** Follow the wizard instructions of web- and icon-based UI and easily configure the Wi-Fi network in just a few steps.

Secured, Separated 3 Wi-Fi Networks

Expandable Indoor & Outdoor Wi-Fi System up to 16 APs



### Office Network

Each employee has his/ her own Wi-Fi access account and password.



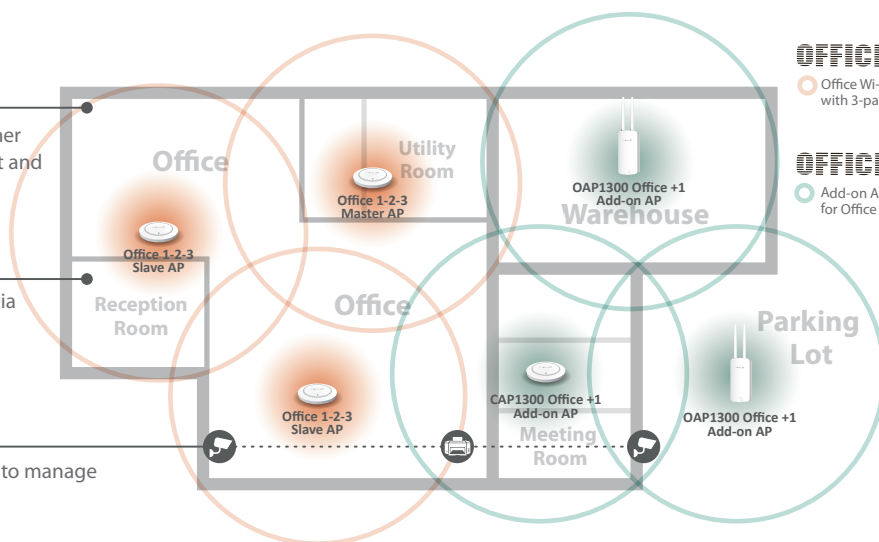
### Guest Network

Login to guest network via captive portal and SMS authentication.

Device Name	MAC Address
IPCAM1	00:34:45:66:1A:01
IPCAM2	00:34:45:66:1A:02
IPCAM3	00:34:45:66:1A:03
Printer1	00:34:45:66:1A:04
Printer2	00:34:45:66:1A:05

### Device Network

Access Control List (ACL) to manage wireless equipments.



**OFFICE 1-2-3**

Office Wi-Fi System with 3-pack Access Point

**OFFICE +1**

Add-on Access Point for Office 1-2-3

## Dedicated Office Wi-Fi System for SMBs

Suitable for a wide range of office spaces such as the working area, meeting room, open space, lobby, warehouse, parking lot and others from indoor to outdoor as well as the home office and large house.



### Ordering Information:

**Office 1-2-3 & Office +1 Product Family**

Office 1-2-3 Wi-Fi System, 3-Pack



Office 1-2-3 Master AP

CAP1300 Office +1 Indoor Add-on AP



OAP1300 Office +1 Outdoor Add-on AP



# Exceptional Business Wi-Fi. Always Stays Connected

## Easy Deployment, Built for Professional Heavy Users

A series of business grade EDIMAX Pro Access Points allows businesses to build a reliable, cost-effective wireless network that goes from indoors to outdoors and long range Wi-Fi connectivity. The EDIMAX Pro Wi-Fi drives progress, maintain employee productivity and customer satisfaction.



High Speed & Efficiency



Wide Coverage



Reliable Connection



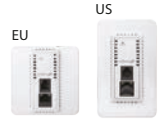
High Density for BYOD



Secure Access



Free & Flexible Management



### Indoor Access Point

Model No.	CAX1800	CAP1750	CAP1300	CAP1200	CAP300	IAP1200
	Ceiling Mount					In-Wall
Description	2x2 AX Dual-Band Ceiling Mount PoE	3x3 AC Dual-Band Ceiling Mount PoE	2x2 AC Wave 2 Dual-Band Ceiling Mount PoE	2x2 AC Dual-Band Ceiling Mount PoE	2x2 N Ceiling Mount PoE	2x2 AC Dual-Band In-Wall PoE
WiFi Standards	802.11 a/b/g/n/ac/ax	802.11 a/b/g/n/ac	802.11 a/b/g/n/ac	802.11 a/b/g/n/ac	802.11b/g/n	802.11 a/b/g/n/ac
Antenna	Type: 2 x Built-In PIFA (2 Dual-Band) Gain: 2.2dBi (2.4GHz), 2.9dBi (5GHz) Max.	Type: 6 x Built-In PIFA (3 x 2.4GHz, 3 x 5GHz) Gain: 4dBi (2.4GHz), 5dBi (5GHz) Max.	Type: 4 x Built-In PIFA (2 x 2.4GHz, 2 x 5GHz) Gain: 4dBi (2.4GHz), 5dBi (5GHz) Max.	Type: 4 x Built-In PIFA (2 x 2.4GHz, 2 x 5GHz) Gain: 2.82dBi (2.4GHz), 4dBi (5GHz) Max.	Type: 2 x Built-In PIFA Gain: 2.82dBi Max.	Type: 2 x Built-In PIFA (2 Dual-Band) Gain: 2.14dBi (2.4GHz), 3.8dBi (5GHz) Max.
Maximum Theoretical Throughput	5GHz: 1201Mbps 2.4GHz: 574Mbps	5GHz: 1300Mbps 2.4GHz: 450Mbps	5GHz: 867Mbps 2.4GHz: 400Mbps	5GHz: 867Mbps 2.4GHz: 300Mbps	2.4GHz: 300Mbps	5GHz: 867Mbps 2.4GHz: 300Mbps
LAN Interface	GbE x 1	GbE x 1	GbE x 2	GbE x 1	GbE x 1	GbE x 2
Power Input	PoE 802.3at/af; DC12V/1A	PoE 802.3at/af; DC12V/2A	PoE 802.3at/af; DC12V/1A	PoE 802.3at/af; DC12V/1A	PoE 802.3at/af; DC12V/1A	PoE 802.3at/af
Power Consumption (Max.)	12W	19.5W (with USB port)	11W	11W	6.5W	8W
No. of SSID	16+16	16+16	16+16	16+16	16	16+16
Concurrent Clients	2.4GHz:100; 5GHz:100	2.4GHz:50; 5GHz:50	2.4GHz:100; 5GHz:100	2.4GHz:50; 5GHz:50	2.4GHz:50	2.4GHz:50; 5GHz:50
802.11 r /k Roaming	v	v	v	v (only 5G)	-	-
Beamforming / AirTime Fairness	v	-	v	-	-	-
Mode	<ul style="list-style-type: none"> <li>Standalone AP mode</li> <li>Master AP mode: Manage 16 APs</li> <li>Managed AP mode: Be managed by CAP/WAP series /OAP1750 Master AP with NMS &amp; APC500</li> </ul>	<ul style="list-style-type: none"> <li>Standalone AP mode</li> <li>Master AP mode: Manage 16 APs</li> <li>Managed AP mode: Be managed by CAP/WAP series /OAP1750 Master AP with NMS &amp; APC500</li> </ul>	<ul style="list-style-type: none"> <li>Standalone AP mode</li> <li>Master AP mode: Manage 16 APs</li> <li>Managed AP mode: Be managed by CAP/WAP series /OAP1750 Master AP with NMS &amp; APC500</li> </ul>	<ul style="list-style-type: none"> <li>Standalone AP mode</li> <li>Master AP mode: Manage 8 APs</li> <li>Managed AP mode: Be managed by CAP/WAP series /OAP1750 Master AP with NMS</li> </ul>	<ul style="list-style-type: none"> <li>Standalone AP mode</li> <li>Master AP mode: Manage 8 APs</li> <li>Managed AP mode: Be managed by CAP/WAP series /OAP1750 Master AP with NMS</li> </ul>	<ul style="list-style-type: none"> <li>Standalone AP mode</li> <li>Managed AP mode: Be managed by CAP/WAP series /OAP1750 Master AP with NMS &amp; APC500</li> <li>For hotel / apartment building deployment</li> </ul>



### Indoor and Outdoor Access Point

Model No.	WAP1750	OAP1750	OAP1300	OAP1300 V2	OAP900
	Wall Mount		Outdoor Pole-Mount		
Description	3x3 AC Dual-Band Wall Mount PoE	3x3 AC Dual-Band Outdoor PoE	2x2 AC Wave 2 Dual-Band Outdoor PoE	2x2 AC Wave 2 Dual-Band Outdoor PoE	2x2 AC 5GHz Outdoor PoE
WiFi Standards	802.11 a/b/g/n/ac	802.11 a/b/g/n/ac	802.11 a/b/g/n/ac	802.11 a/b/g/n/ac	802.11 a/n/ac
Antenna	Type: 3 x External Gain: 2dBi (2.4GHz), 2dBi (5GHz)	Type: 6 x External (3 x 2.4GHz, 3 x 5GHz) Gain: 4.38dBi (2.4GHz), 5.34dBi (5GHz) Max.	Type: 2 x External Gain: 3.9dBi (2.4GHz), 4.4dBi (5GHz)	Type: 2 x Built-in Omni (2 x Dual-Band) Gain: 5dBi (2.4GHz), 14dBi (5GHz)	Type: 2 x Internal Patch Gain: 15dBi (5GHz) 2 x SMA Connectors for External Ant.
Maximum Theoretical Throughput	5GHz: 1300Mbps 2.4GHz: 450Mbps	5GHz: 1300Mbps 2.4GHz: 450Mbps	5GHz: 867Mbps 2.4GHz: 400Mbps	5GHz: 867Mbps 2.4GHz: 400Mbps	5GHz: 867Mbps
LAN Interface	GbE x 2	GbE x 1	GbE x 2	GbE x 2	GbE x 2
Power Input/Output	Power In: PoE 802.3at; DC12V/4A PoE Out: PoE 802.3af	Power In: PoE 802.3at	Power In: PoE 802.3at PoE Out: 802.3af	Power In: PoE 802.3at PoE Out: 802.3af	Passive PoE Input PoE Out
Power Consumption (Max.)	15W	22W	15W	15W	10.6W
No. of SSID	16+16	16+16	16+16	16+16	16
Concurrent Clients	2.4GHz:50; 5GHz:50	2.4GHz:50; 5GHz:50	2.4GHz:100; 5GHz:100	2.4GHz:100; 5GHz:100	5GHz:50
802.11 r /k Roaming	v	v	v	v	v
Beamforming / AirTime Fairness	-	-	v	v	-
Mode	<ul style="list-style-type: none"> <li>Standalone AP mode</li> <li>Master AP mode: Manage 16 APs</li> <li>Managed AP mode: Be managed by CAP/WAP series /OAP1750 Master AP with NMS &amp; APC500</li> </ul>	<ul style="list-style-type: none"> <li>Standalone AP mode</li> <li>Master AP mode: Manage 16 APs</li> <li>Managed AP mode: Be managed by CAP/WAP series /OAP1750 Master AP with NMS &amp; APC500</li> </ul>	<ul style="list-style-type: none"> <li>Standalone AP mode</li> <li>Managed AP mode: Be managed by CAP/WAP series /OAP1750 Master AP with NMS &amp; APC500</li> </ul>	<ul style="list-style-type: none"> <li>Standalone AP mode</li> <li>Managed AP mode: Be managed by CAP/WAP series /OAP1750 Master AP with NMS &amp; APC500</li> </ul>	<ul style="list-style-type: none"> <li>Standalone AP mode</li> <li>Managed AP mode: Be managed by CAP/WAP series /OAP1750 Master AP with NMS &amp; APC500</li> </ul>

## Choice of Wi-Fi Network Management

### For Edimax Pro Series Access Points

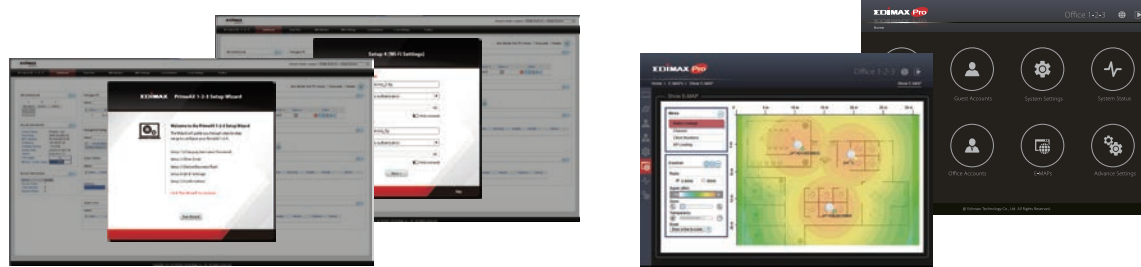
Edimax Pro NMS (Network Management Suite) is a web-based wireless network management system built-in Edimax Pro access point (CAX, CAP, WAP series and OPA1750) and AP Controller (APC500).

- **Expanded & Flexible Management:** Free, integrated controller software NMS for up to 8/16 (CAX/CAP/WAP series, OAP1750) or 200 (APC500) APs
- **Free of License Charge:** No additional AP license required
- **Multiple SSIDs:** Up to 32 SSIDs (16 x 2.4GHz & 16 x 5GHz) per access point
- **Zones Plan & Google Maps:** Intuitive indoor/outdoor AP management
- **Guest Captive Portal:** Customized login landing page
- **Guest Ticket:** Hotspot dynamic account to allow temporary Wi-Fi access
- **SMS Authentication:** SMS login (project base)
- **Built-in RADIUS (AAA):** Supports authentication up to 512 user accounts
- **Supported AP Models:** Edimax Pro CAX, CAP, WAP, OAP & IAP Series



Model No.	APC500	NMS
Where to Use	For SMB/SME Level	For Small Project and Offices
Highlight	<ul style="list-style-type: none"> <li>· Manages up to 200 EDIMAX Pro APs</li> <li>· Stand-Alone Box</li> <li>· Centralized &amp; Remote Management</li> <li>· Support Gigabit Ports and USB 3.0</li> <li>· Built-in Radius Server</li> </ul>	<ul style="list-style-type: none"> <li>· Manages up to 8 or 16 Edimax Pro APs (One Master AP Manages Other APs)</li> <li>· Free, Built-in with EDIMAX Pro CAP/WAP/CAX Series and OAP1750 AP</li> <li>· AP Array Architecture</li> <li>· Built-in Radius Server, No Need for Extra Server and Hardware Controller</li> </ul>
Applied Models	All EDIMAX Pro APs (except PrimeAX 1-2-3 & Office 1-2-3 series)	All EDIMAX Pro APs (Built-in with CAP/WAP/CAX series and OAP1750 APs)

## Wi-Fi System Network Management



Model No.	PrimeAX 1-2-3	OFFICE 1-2-3
Where to Use	For offices, schools, hotels, hospitals, retail shops or shopping malls with High-Speed	For Small Business and Offices
Highlight	<ul style="list-style-type: none"> <li>· Managed up to 16 PrimeAX 1-2-3 series APs (One Master AP Manages Other APs)</li> <li>· Free, Built-in with PrimeAX 1-2-3 series AP</li> </ul>	<ul style="list-style-type: none"> <li>· Manages up to 16 Office 1-2-3 series APs (One Master AP Manages Other APs)</li> <li>· Free, Built-in with Office 1-2-3 series AP.</li> </ul>
Applied Models	All PrimeAX 1-2-3 series APs Only	All Office 1-2-3 series APs Only



**Edimax Technology Co., Ltd.**

No. 278, Xinhua 1st Rd., Neihu Dist.,  
Taipei City, Taiwan  
Email: [sales@edimax.com.tw](mailto:sales@edimax.com.tw)

**Edimax Technology Europe B.V.**

Fijenhof 2, 5652 AE Eindhoven,  
The Netherlands  
Email: [sales@edimax.nl](mailto:sales@edimax.nl)

**Edimax Computer Company**

530 Technology Drive Suite 100, Irvine,  
CA 92618, USA  
Email: [sales@edimax.com](mailto:sales@edimax.com)

Maximum performance, actual data rates and coverage will vary depending on network conditions and environmental factors. Product specifications and design are subject to change without notice.