

How to share the Edimax Printer Server to MAC computers?

Author: Longcent

(2007-1-4)

This FAQ is applied to the following models and MAC versions:

Edimax: PS-1206 series / PS-1216 series

MAC computer: 10.3 / 10.4 version

Printer: non all-in-one printers (non-multifunctional printers)

Introduction:

There are two methods for sharing the printers via the stand-alone printer server like Edimax printer server:

1. The embeded wizard in the MAC computer using LPR printing.

(LPR , Line Printer Remote technology) allows MAC computer to connect to the printer server via standard TCP/IP.)

2. The proprietary software developed by the printer server vendor.

(This software often supports Windows system, like Windows 2000, XP and Vista only.)

In this FAQ, we will walk you through setting up the printer sharing via Edimax printer server under the MAC computer using the first method, **The embeded wizard in the MAC computer using LPR printing.**

Step by Step:

Step 1 : Ensure that the IP addresses are set correctly in the MAC computer.

In this FAQ, we assume that all of your computers share the IP addresses from 192.168.1.1 to 192.168.2.254, and there is a Epson pritner hooked the Edimax printer server ash shown in the **Figure-1**.

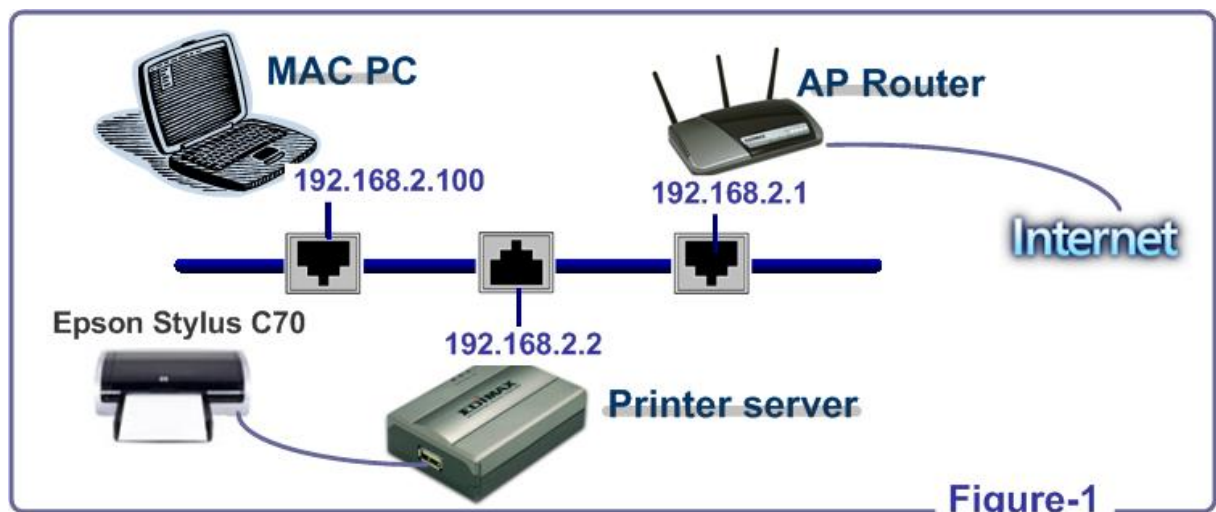


Figure-1

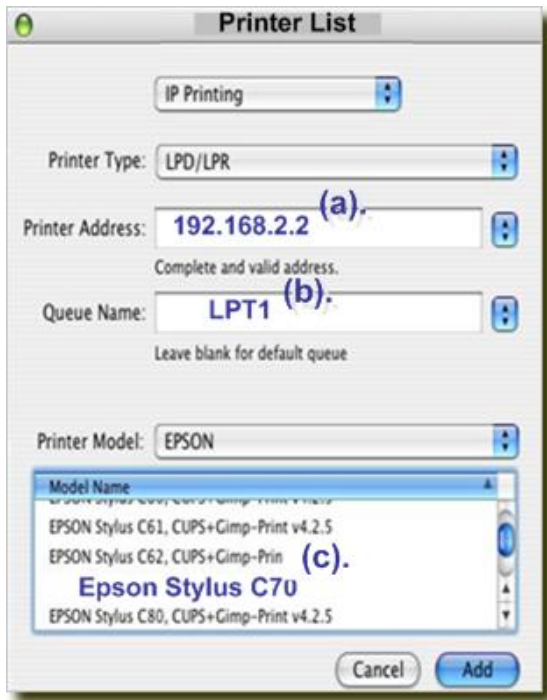


Step 3.
Click "Print & Fax"



Step 4. Click "Add"





Step 5.

- (a). Enter the IP address ,192.168.2.2 to the printer server
- (b). Assign the name “ LTP1” to first connected printer
- (c). Pick the proper Printer model



Step 6.

All the configuration is completed
 The print job in the MAC computer
 will be forwarded to ESPON C70 via
 the Edimax printer server,
 192.168.2.2