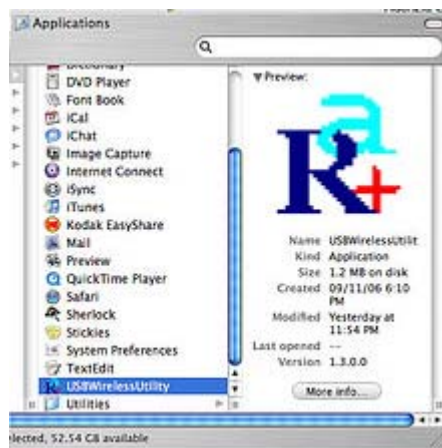


Edimax Wireless PCI Adapter & Cardbus 11g and 11n

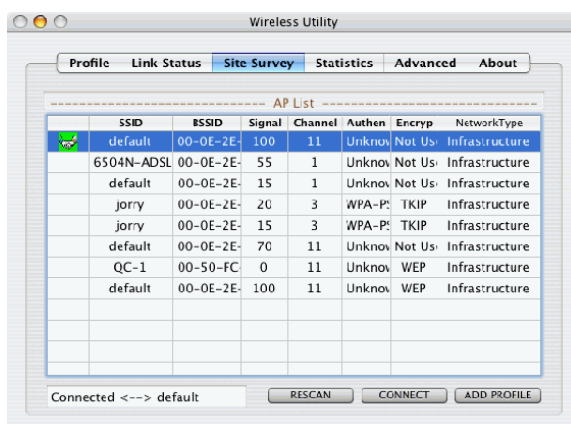
Quick Installation Guide Mac OS

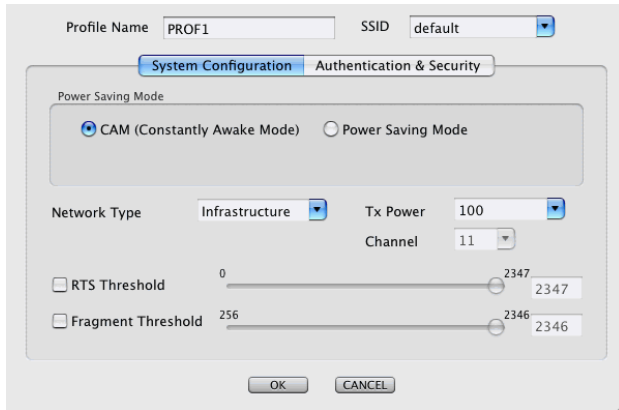
A) Install the driver and Connect to your Wireless Network

1. Insert the wireless PCI Adapter to your Mac's PCI slot. Or insert the wireless Cardbus into your laptop's cardbus slot.
2. Install the driver into your Mac from the CD. (Please use the latest Mac's driver from Edimax Website). You can download it from Edimax website.
3. Restart your Mac.
4. In the main Applications folder, you will see the "**USBWirelessUtility**". (It may or may not open automatically after inserting your wireless USB adapter). It shows the details information about the wireless USB adapter.

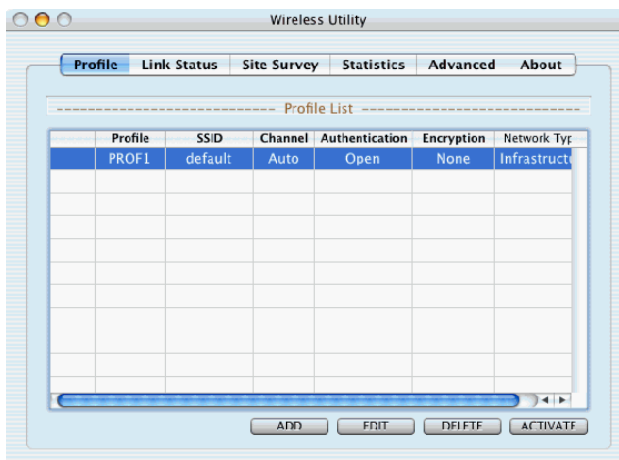


5. Open the Wireless Utility > Site Survey tab and select your wireless router and click "ADD PROFILE". (It'll ask you to enter details accordingly. If you have security like WEP/WPA turned on, put that information in or you won't be able to connect.)





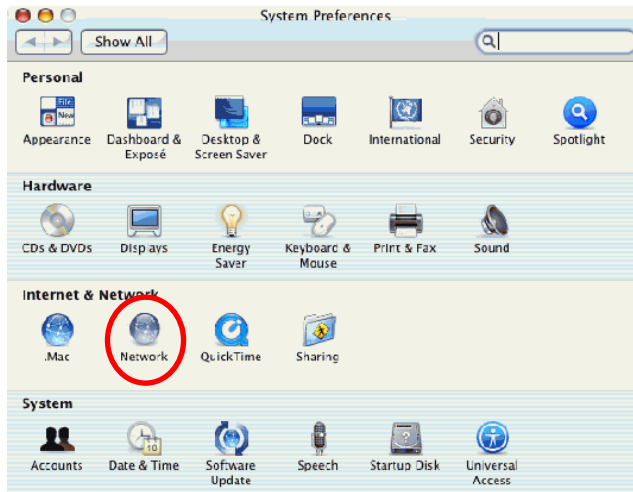
Select 'Authentication & Security' and enter your WEP/WPA key.



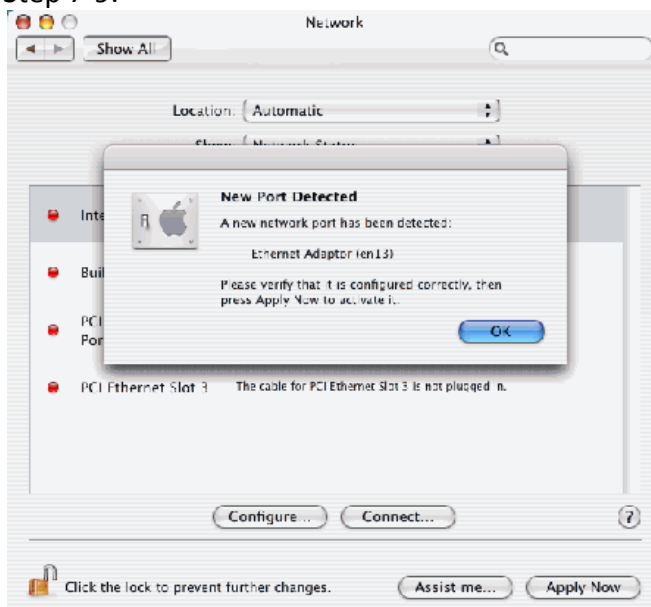
PROF1 will appear in the Profile tab, select PROF1 and click "ACTIVATE". You will see a green tick showing it's connected. Go to Step 6.

NOTE: A red tick is showing it's not connected. In this case, you may have entered incorrect WEP/WPA key.

6. Go to Menu > System Preferences > Network.



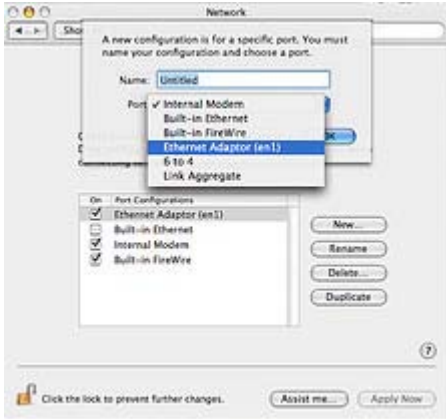
It will show a new port, which is the wireless USB adapter. Click OK and go to Step 10. If your Mac doesn't automatically detect the 'Ethernet Adaptor (en1)', please follow Step 7-9.



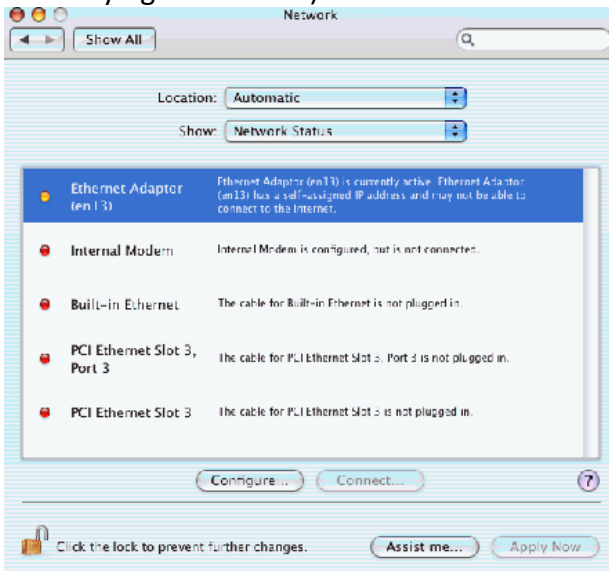
7. From the "Show" popup menu, select "Network Port Configurations".

8. Click "New".

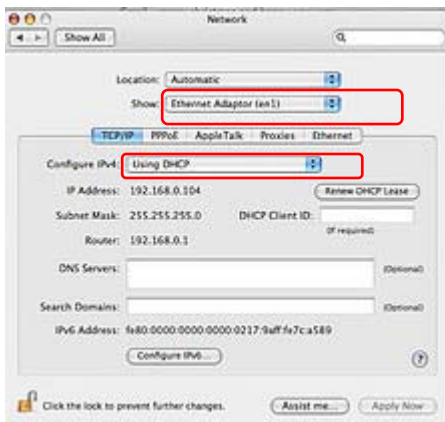
9. Click "Port". You'll see eg: "Ethernet Adaptor (en1)". Give it a name, and click "OK".



10. The port will show up in the list. (Dragged it to the top to give it the highest priority when trying to connect.)



11. From "Show", select that Ethernet adaptor port.

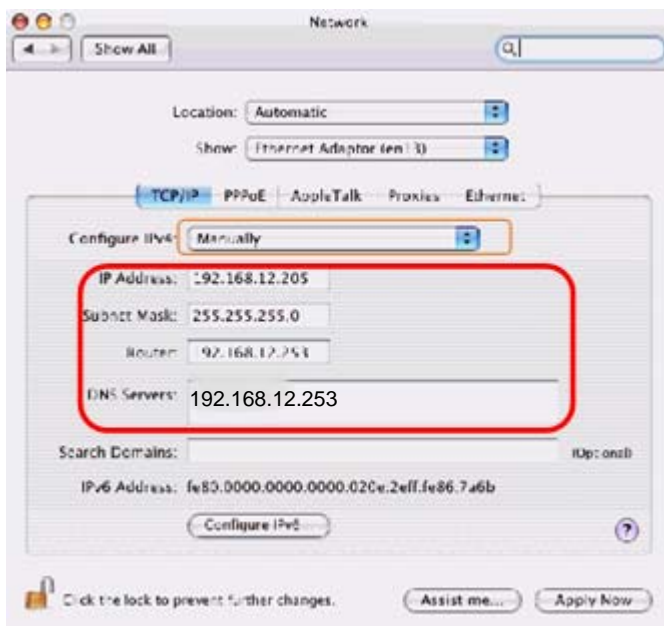


12. Under the "TCP/IP" tab, "Configure IPv4", use "Using DHCP".
13. Click "Apply Now". Shortly, it should refresh and show your numbers for "IP Address", "Subnet Mask" and "Router". If it doesn't update, you may need to click "Renew DHCP Lease".
14. After OK and wait for few seconds, you should see that you're connected. You can now access to the Internet.

B) Can't Connect to your Wireless Network

If you have done the above Step 1-14 but you are not connected to the Internet. Please do the following:

15. Under the "TCP/IP" tab, "Configure IPv4", use "Manually".

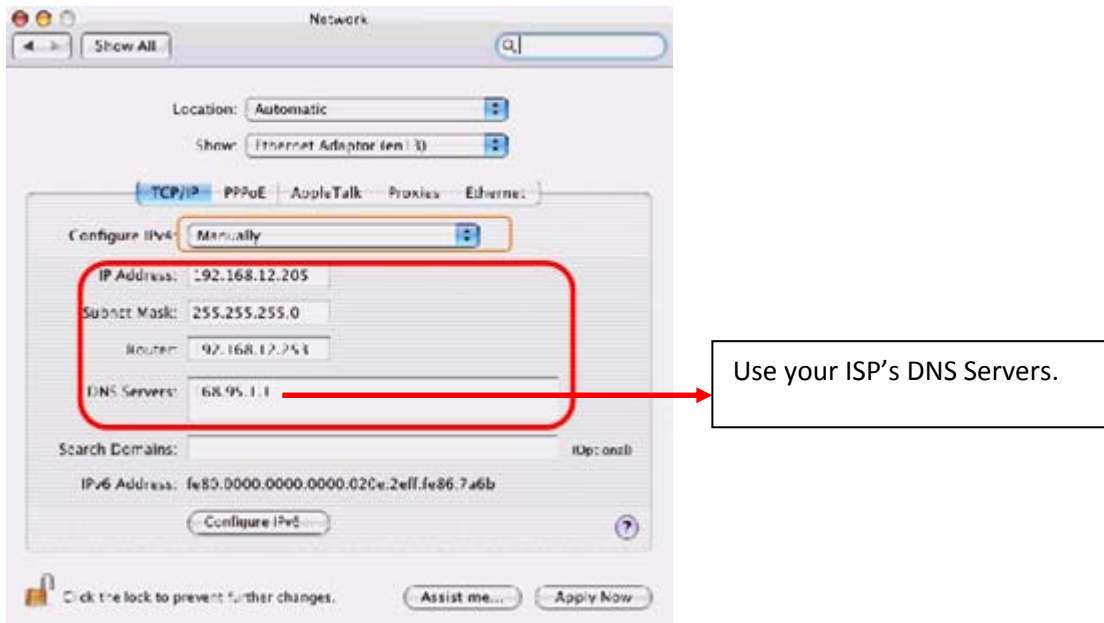


16. Enter your IP Address, Subnet Mask, Router and DNS Server manually.
 - The above example is based on router IP Address 192.168.12.253. Your route's IP Address will be different. Please use your own IP's range and your router's IP Address.
 - DNS Servers is the same as your router's IP Address.
 - Click "Apply Now" to save the setting.
17. After wait for few seconds, you should see that you're connected. You can now access to the Internet. If you are still unable to open webpage, please go to Step 18.

C) Can't Connect to your Wireless Network

18. In this case, you need to use the DNS Servers provided by your ISP. If you don't have the DNS Servers address, please contact your ISP.

Then, enter the DNS Servers into the TCP/IP setting as follows:



19. After wait for few seconds, you should see that you're connected. You can now access to the Internet.