

How to configure my IP address as “Obtain IP address automatically”

Author: Longcent

(2006.11.6)

This FAQ is applied to the below operation systems:

- Windows 2000/XP.

Introduction:

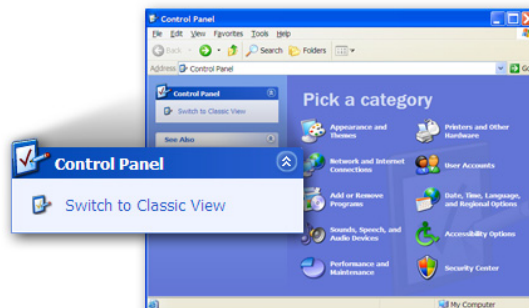
This FAQ is for guiding you to configure the IP address of your network card as “Obtain IP address automatically”. In some cases, the failure of the Internet access is due to that your IP address is not set as “Obtain IP address automatically”.

Configuration Steps:

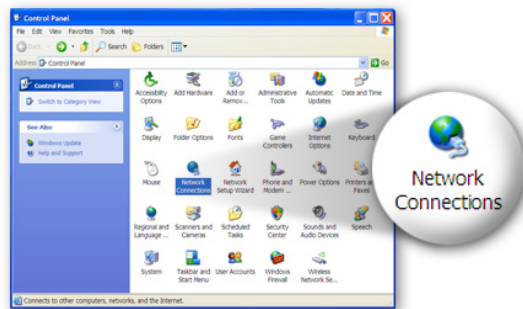
Step1. Click “Start” in the task bar and select “Control Panel”.



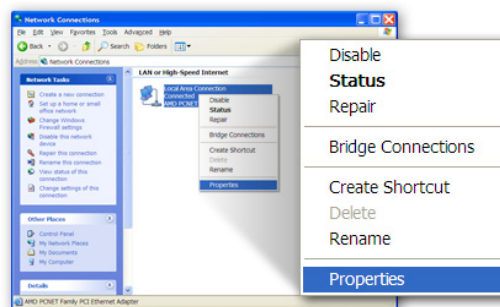
Step 2. Click “Switch to Classic View” on the left top.



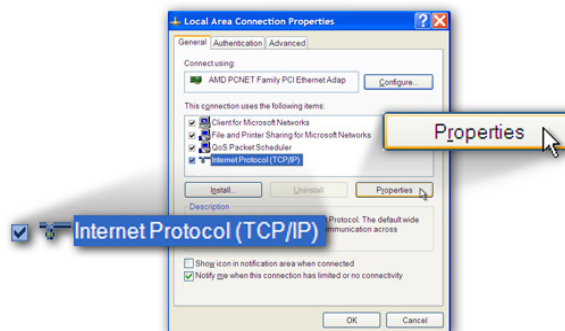
Step 3. Double-click the “**Network Connection**” icon.



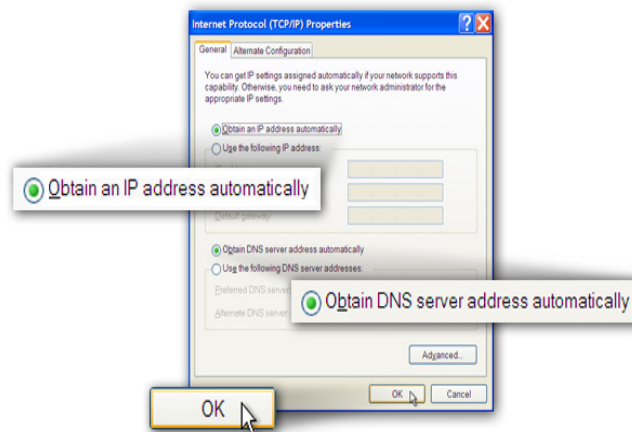
4. Rick-click the “**Local Area Connection**” and select “**Properties**”.



5 Select “**Internet Protocol**” and click “**Properties**”.



6 Ensure the option “**Obtain an IP address automatically**” and “**Obtain DNS address automatically**” is checked and click “**OK**”.



7. Now, the configuration is complete.