

## EW-7711ULC

# Quick Installation Guide

07-2015 / v1.1

---

### **Edimax Technology Co., Ltd.**

No.3, Wu-Chuan 3rd Road, Wu-Gu, New Taipei City 24891, Taiwan

Email: [support@edimax.com.tw](mailto:support@edimax.com.tw)

---

### **Edimax Technology Europe B.V.**

Fijenhof 2, 5652 AE Eindhoven, The Netherlands

Email: [support@edimax.nl](mailto:support@edimax.nl)

---

### **Edimax Computer Company**

3350 Scott Blvd., Bldg.15 Santa Clara, CA 95054, USA

Live Tech Support: 1(800) 652-6776

Email: [support@edimax.com](mailto:support@edimax.com)

# CONTENTS

<b>I. Product Information.....</b>	<b>1</b>
I-1. Package Contents .....	1
I-2. LED Status .....	1
I-3. System Requirements.....	1
<b>II. Installation.....</b>	<b>2</b>
<b>III. Windows.....</b>	<b>4</b>
III-1. Driver Installation .....	4
III-2. Driver Uninstallation.....	8
III-2-1. Windows XP/Vista/7 .....	8
III-2-2. Windows 8/8.1.....	8
III-3. Using The Adapter .....	9
<b>IV. Mac .....</b>	<b>11</b>
IV-1. Driver Installation .....	11
IV-2. Driver Uninstallation.....	14
IV-3. Using The Adapter .....	15
IV-3-1. Connect to a Wi-Fi network.....	15
IV-3-2. Wireless Utility.....	18
IV-3-2-1. Profile.....	18
IV-3-2-2. Link Status.....	20
IV-3-2-3. Site Survey .....	21
IV-3-2-4. Statistics.....	22
IV-3-2-5. WPS.....	23
IV-3-2-6. About .....	27

## **Multi-Language Quick Installation Guide (QIG) on the CD**

**Čeština:** Českého průvodce rychlou instalací naleznete na přiloženém CD s ovladači.

**Deutsch:** Finden Sie bitte das deutsche S.A.L. beiliegend in der Treiber CD.

**Español:** Incluido en el CD el G.R.I. en Español.

**Français:** Veuillez trouver l'français G.I.R ci-joint dans le CD.

**Italiano:** Incluso nel CD il Q.I.G. in Italiano.

**Magyar:** A magyar telepítési útmutató megtalálható a mellékelt CD-n.

**Nederlands:** De nederlandse Q.I.G. treft u aan op de bijgesloten CD.

**Polski:** Skrócona instrukcja instalacji w języku polskim znajduje się na załączonej płycie CD.

**Português:** Incluído no CD o G.I.R. em Portugues.

**Русский:** Найдите Q.I.G. на русском языке на приложенном CD.

**Türkçe:** Ürün ile beraber gelen CD içinde Türkçe Hızlı Kurulum Kılavuzu'nu bulabilirsiniz.

**Українська:** Для швидкого налаштування Вашого пристрою, будь ласка, ознайомтесь з інструкцією на CD.

# I. Product Information

---

The EW-7711ULC is a next-gen 11ac 5GHz USB Wi-Fi adapter ideal for upgrading laptop.



***This wireless adapter can be used in addition to your existing wireless adapter(s). For help using the adapter after setup, please refer to III-3. or IV-3 Using The Adapter.***

## I-1. Package Contents



**EW-7711ULC**



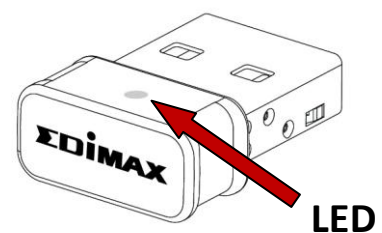
**QIG**



**CD-ROM**

## I-2. LED Status

LED	LED Status	Description
WLAN	On	Wireless activity: transmitting or receiving data.
	Off	No wireless activity.



## I-3. System Requirements

- Windows XP/Vista/7/8/8.1~, Mac OS X 10.7~
- Minimum USB 2.0 Port
- Hard Disk: 100MB
- CD-ROM Drive

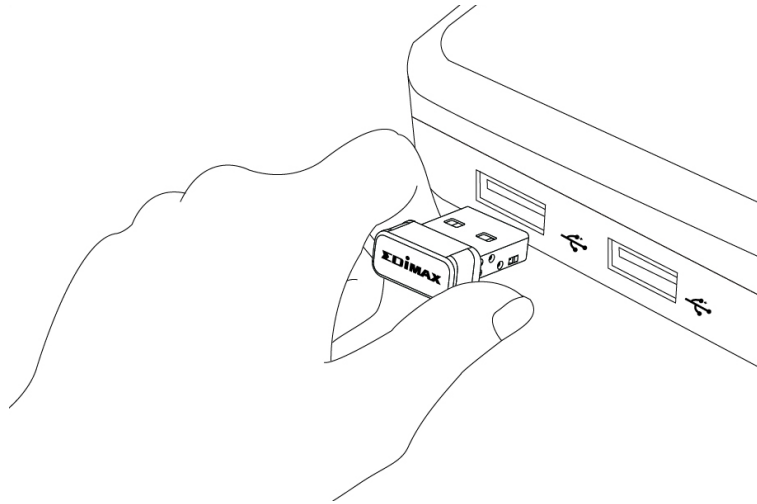
## II. Installation

---

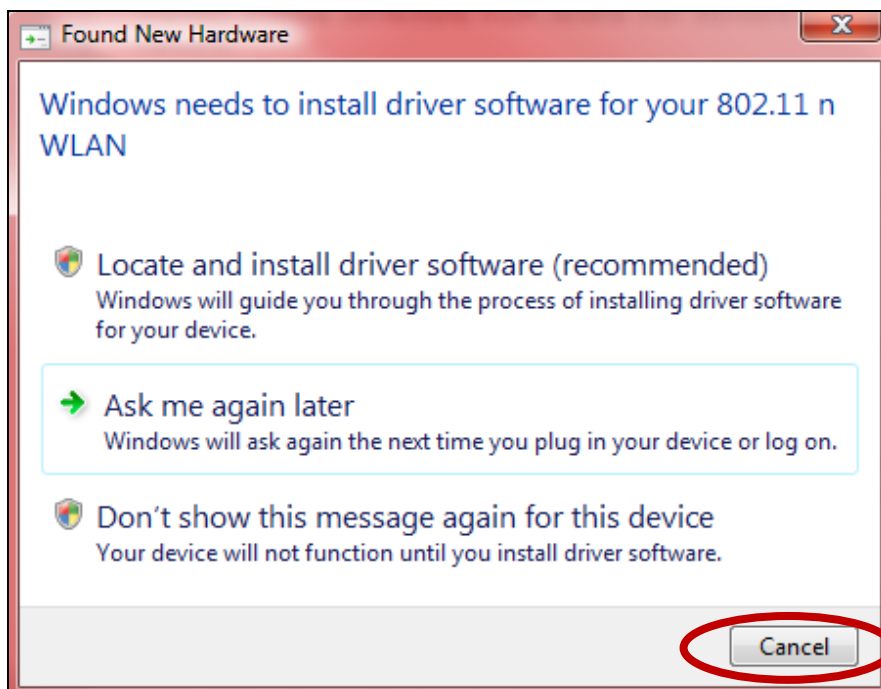
1. Switch on your computer and insert the USB adapter into an available USB port of your computer.



**Never use force to insert the USB adapter.**



2. If a Hardware Wizard/Driver Installation window opens as shown below, please click “Cancel” or “Close”.



**3.** Insert the included CD-ROM into the CD drive of your computer.



*The setup wizard is also available for download from the Edimax website.*

**4.** For **Windows** users the setup wizard will open. For **Mac** users the CD's "Mac" folder will open.



*If the CD doesn't auto-run, please browse to the "Autorun" or "Mac" folder of the CD for Windows or Mac users respectively.*

**5.** Please follow the instructions in the appropriate chapter for your operating system.

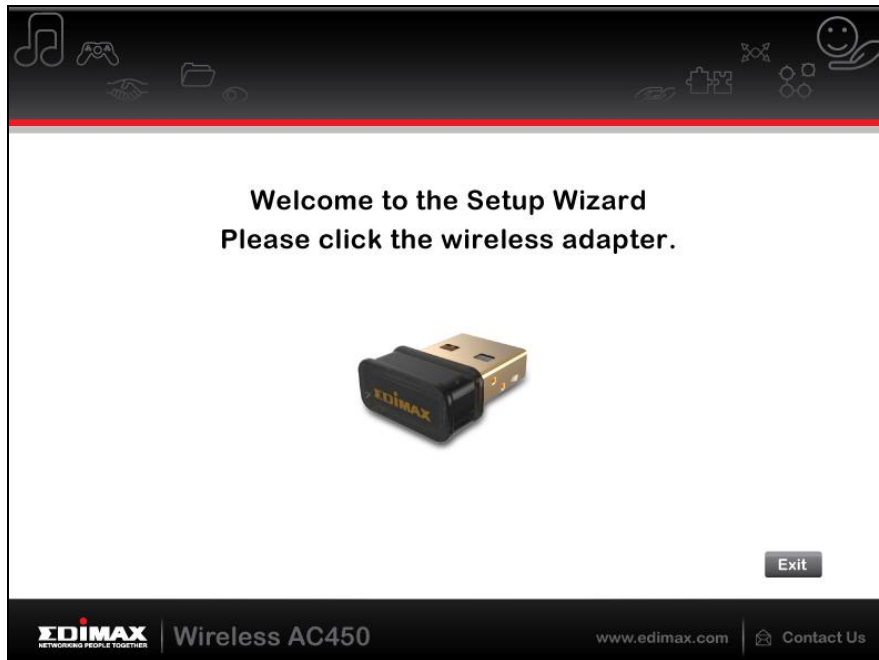
**III. Windows**

**IV. MAC**

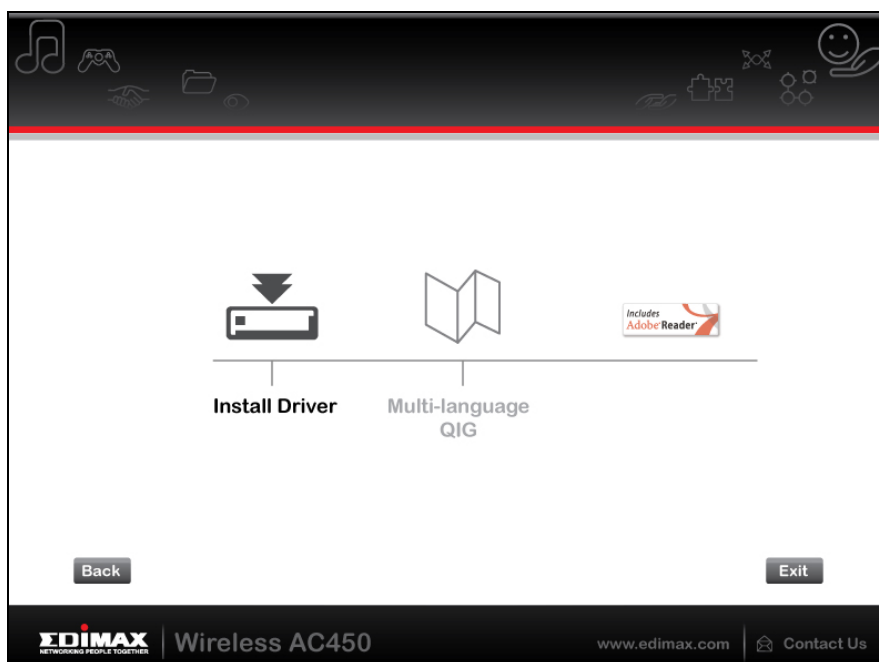
# III. Windows

## III-1. Driver Installation

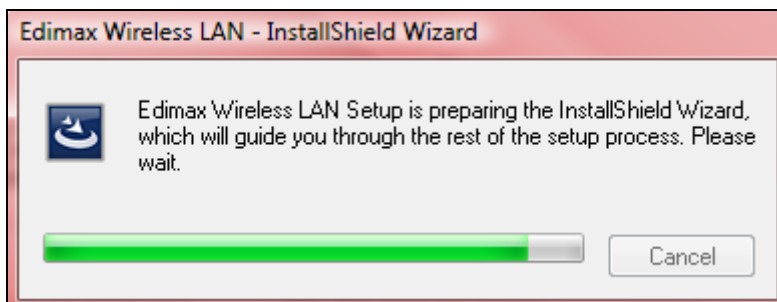
1. Click the EW-7711ULC wireless USB adapter to continue.



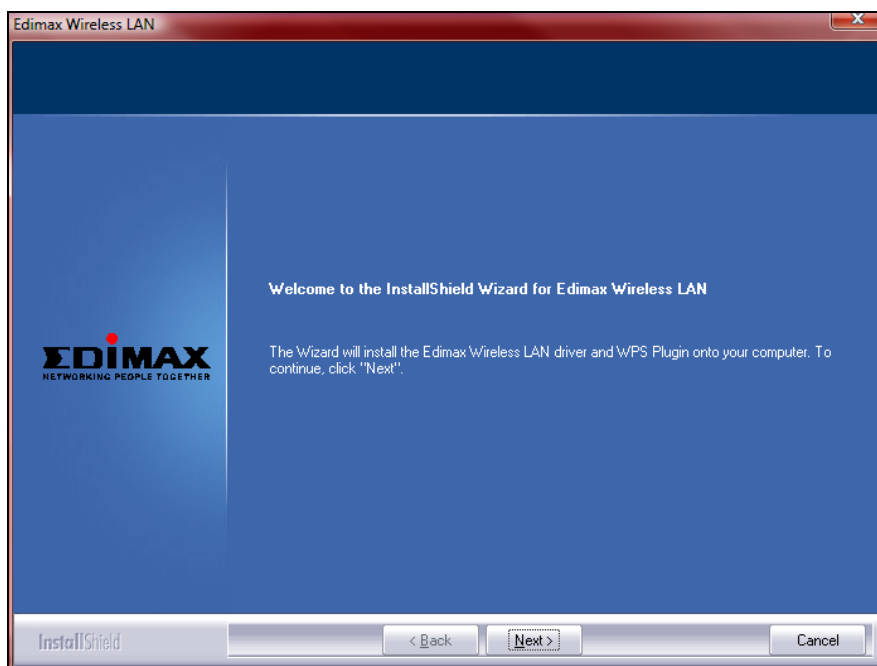
2. Click "Install Driver" to continue to install the drivers for your EW-7711ULC.



**3.** Please wait while the setup wizard prepares to install the drivers.

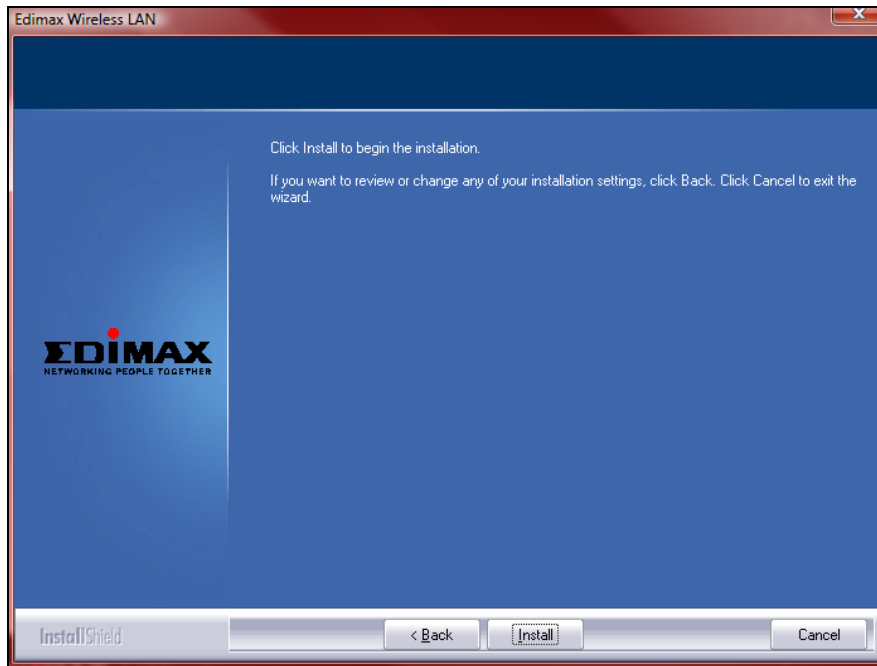


**4.** Click "Next" to continue.

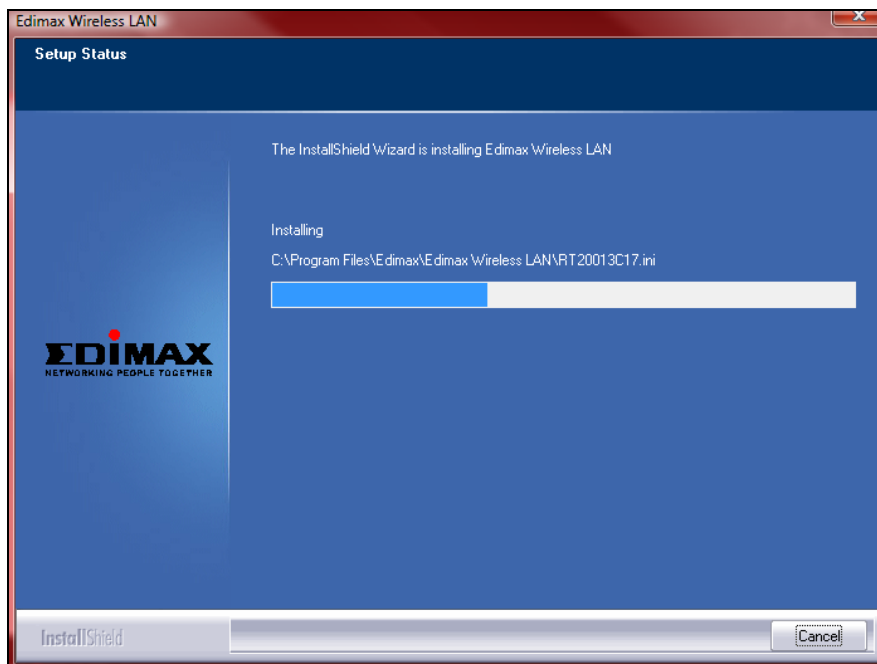




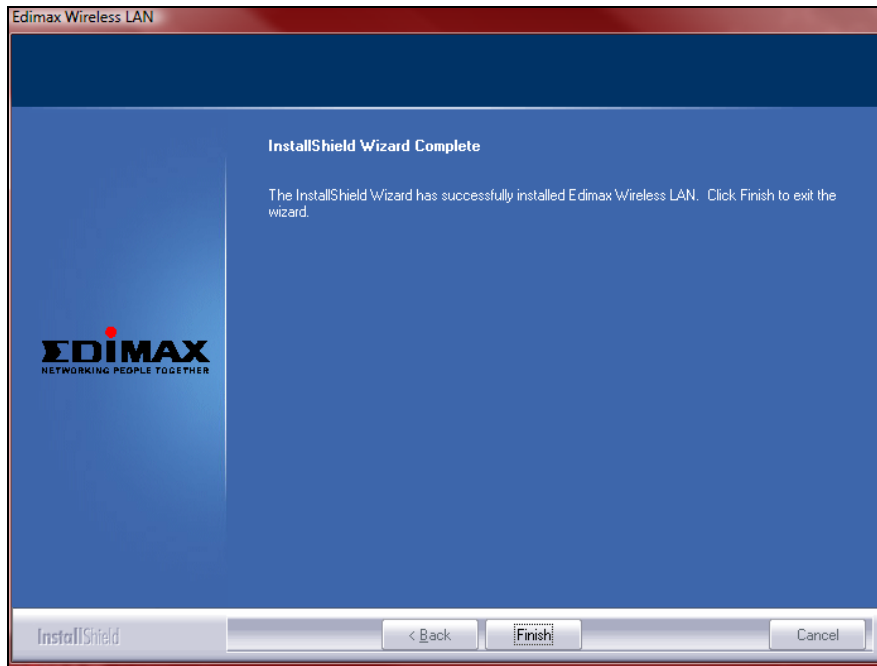
5. Click "Install" to install the driver.



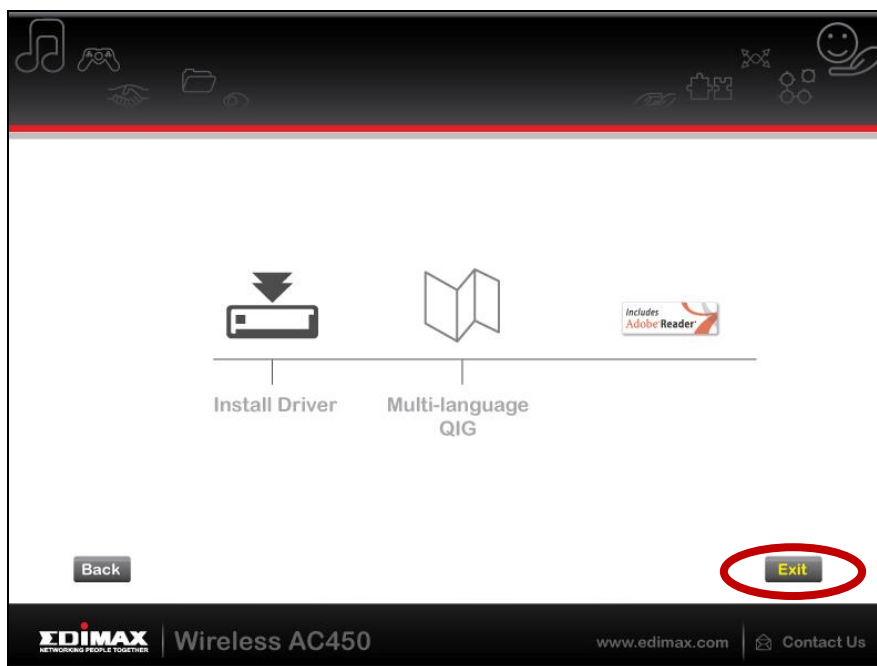
6. Please wait while the driver is installing.




**7.** When the installation is complete, click “Finish”.



**8.** Click “Exit” to close the setup wizard.



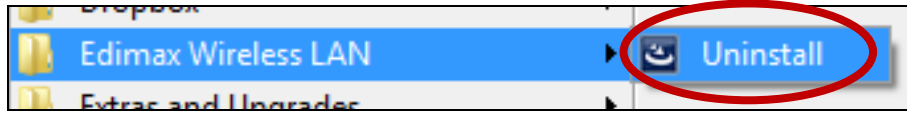
 ***The multi-language QIG is also included on the CD-ROM. To open it click “Multi-language QIG”.***

**9.** Users can connect to an available Wi-Fi network as usual. For guidance on doing so, please refer to **III-3. Using The Adapter.**

## III-2. Driver Uninstallation

### III-2-1. Windows XP/Vista/7

1. Go to **Start > Programs > Edimax Wireless LAN > Uninstall**.



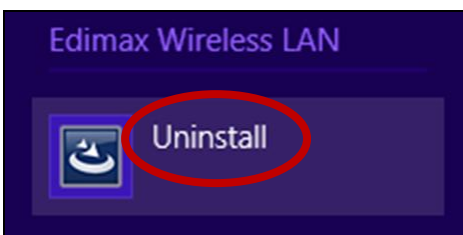
2. Follow the on screen instructions. An uninstall wizard will guide you through the process.

### III-2-2. Windows 8/8.1

1. Right click anywhere on the “Start” screen and then click the “All apps” icon in the bottom right corner.



2. Locate the Edimax Wireless LAN category, select “Uninstall” and follow the on-screen instructions.

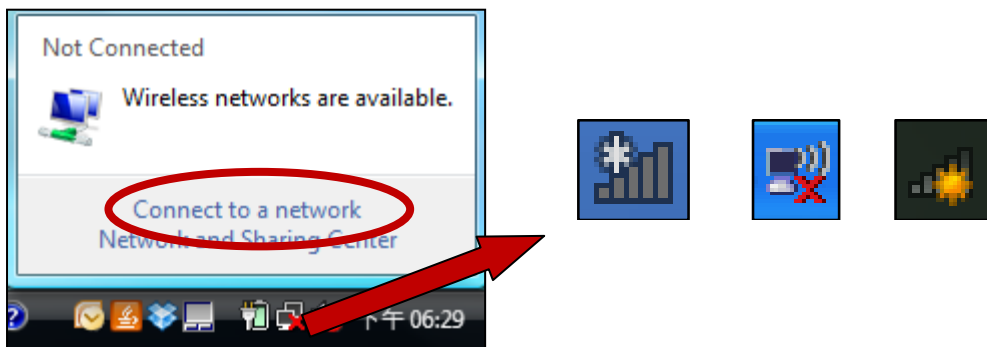


### III-3. Using The Adapter

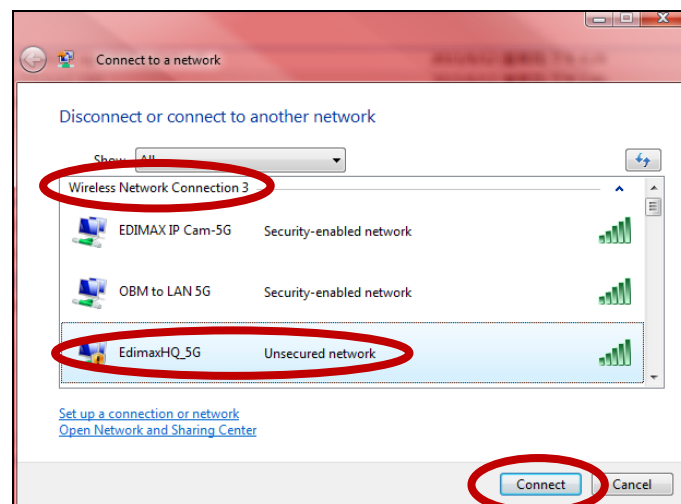
After you have installed the driver, Windows users can connect to a Wi-Fi network as usual.

Below is an example of how to connect using Windows Vista - the process may vary slightly for other versions of Windows.

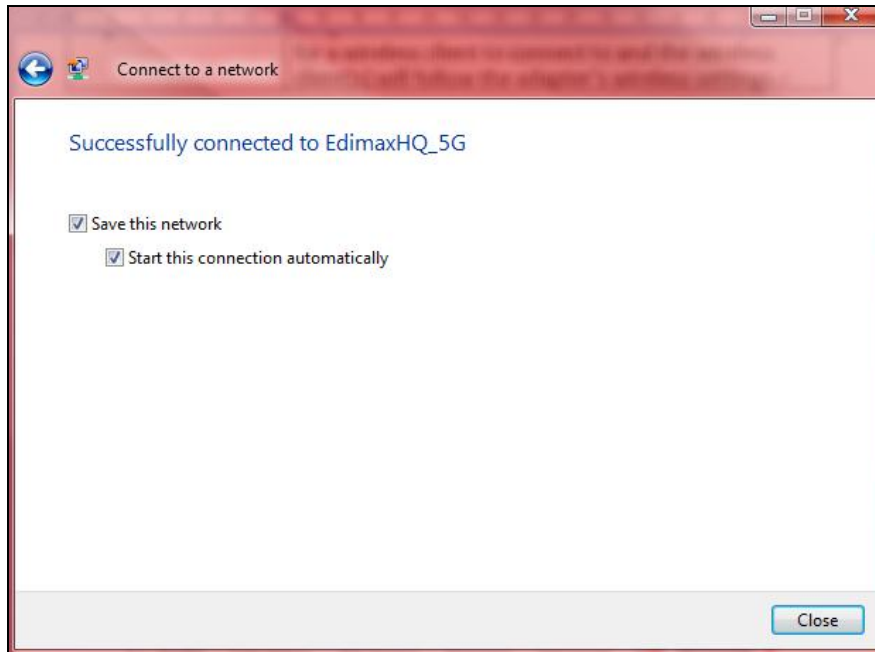
1. Click the network icon (examples below) in the system tray and select “Connect to a network”.



2. Your new wireless adapter will be listed in addition to your existing wireless adapter. In the example below, it is named “Wireless Network Connection 3”. Search for the SSID of your 5GHz Wi-Fi network and then click “Connect”. If you set a password for your network, you will then be prompted to enter it.



- 3.** After correctly entering your password, you will be successfully connected to your Wi-Fi network. You can disconnect the wireless adapter in the same way you usually would for your existing wireless adapter.

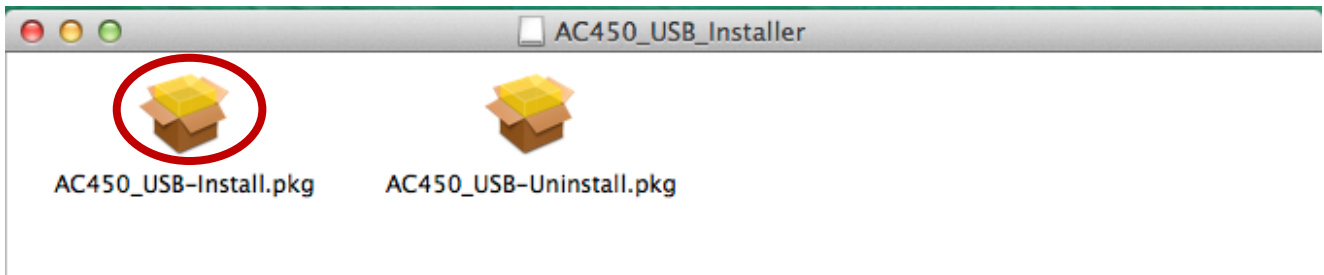


## IV. Mac

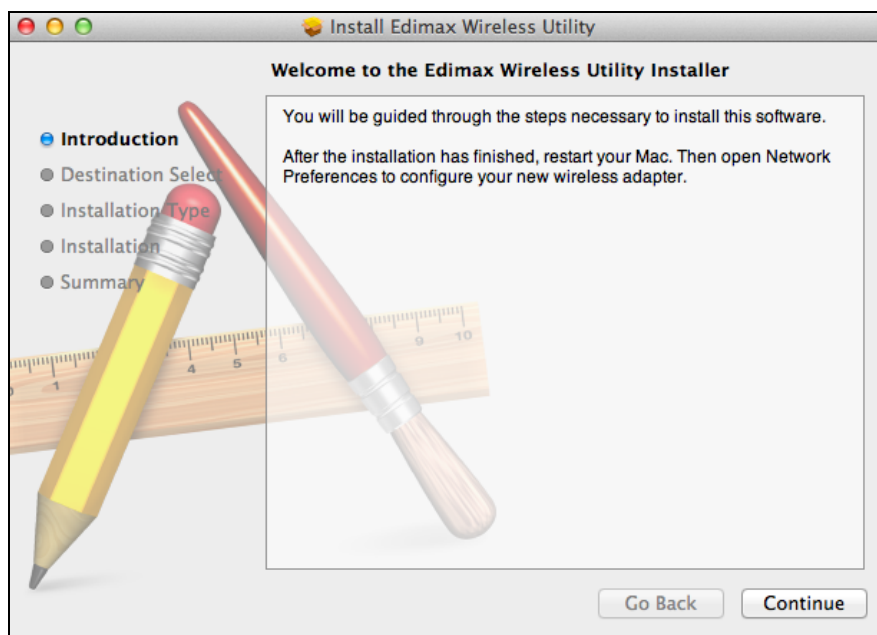
---

### IV-1. Driver Installation

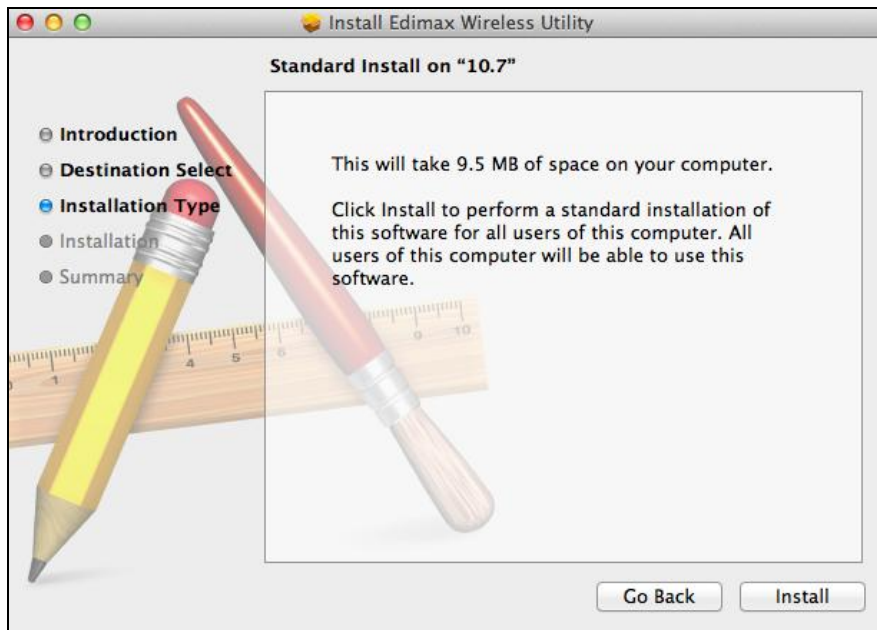
1. Double click the “AC450\_USB\_Installer.pkg” file.
2. Double click the “AC450\_USB-Install.pkg” file to open the driver installation wizard.



3. Click “Continue” to proceed to the next step.



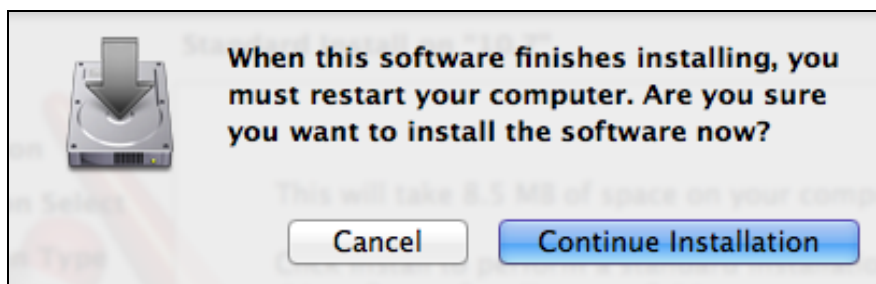
4. Click “Install” to install the driver.



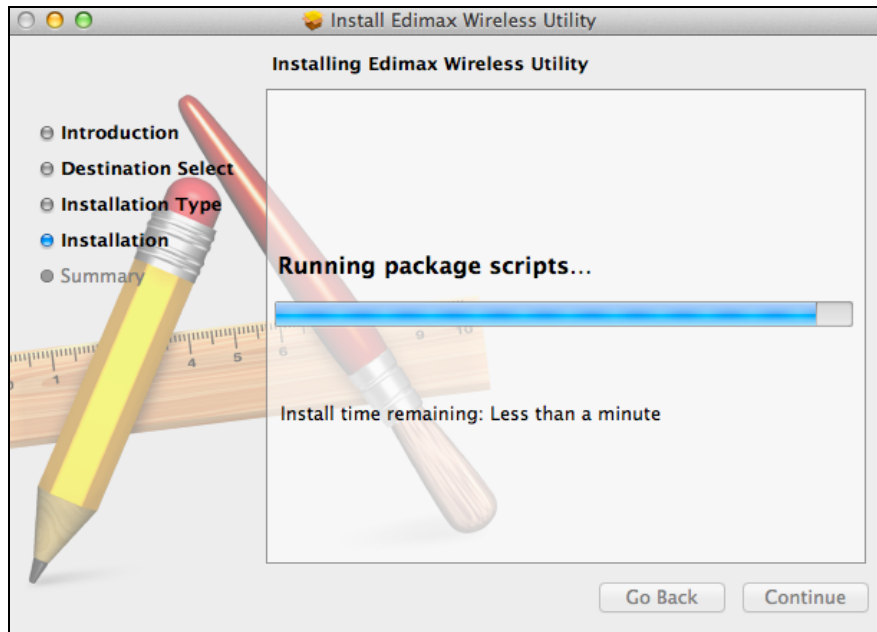
5. You may be prompted to enter your system/administrative password before the installation can begin. Enter your password and click “Install Software”.



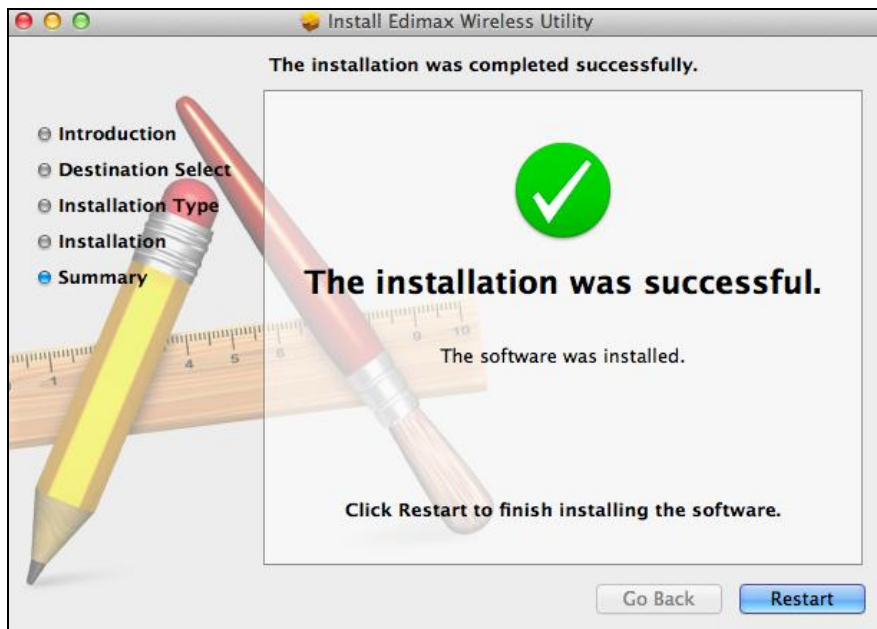
6. You will be prompted that you must restart your computer when the installation is complete. Click “Continue Installation” to proceed.



7. Please wait while the driver is installing.

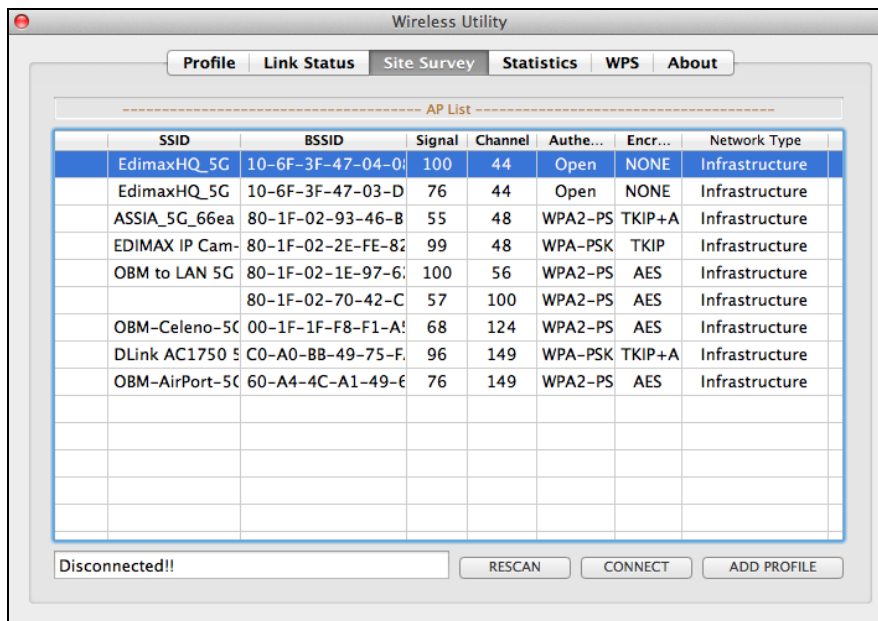


8. When the installation is complete, you will see the following screen informing you that "The installation was successful". Click "Restart" to restart your computer.





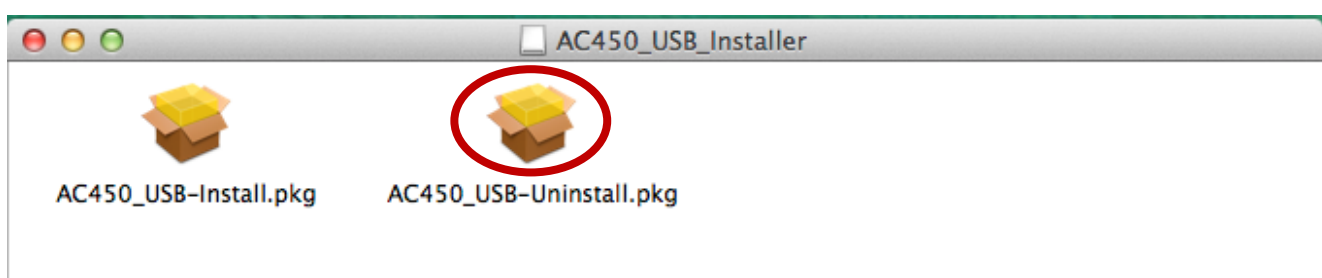
9. After your system has restarted, the wireless utility will open automatically as shown below. You can use the wireless utility to connect to a Wi-Fi network with your new adapter.



10. Select a Wi-Fi network from the list and click “Connect”. For more guidance, please refer to **IV-3. Using The Adapter**.

## IV-2. Driver Uninstallation

1. Double click the “AC450\_USB\_Installer.pkg” file.
2. Double click the “AC450\_USB-Uninstall.pkg” file to open the driver un-installation wizard and follow the instructions on-screen.

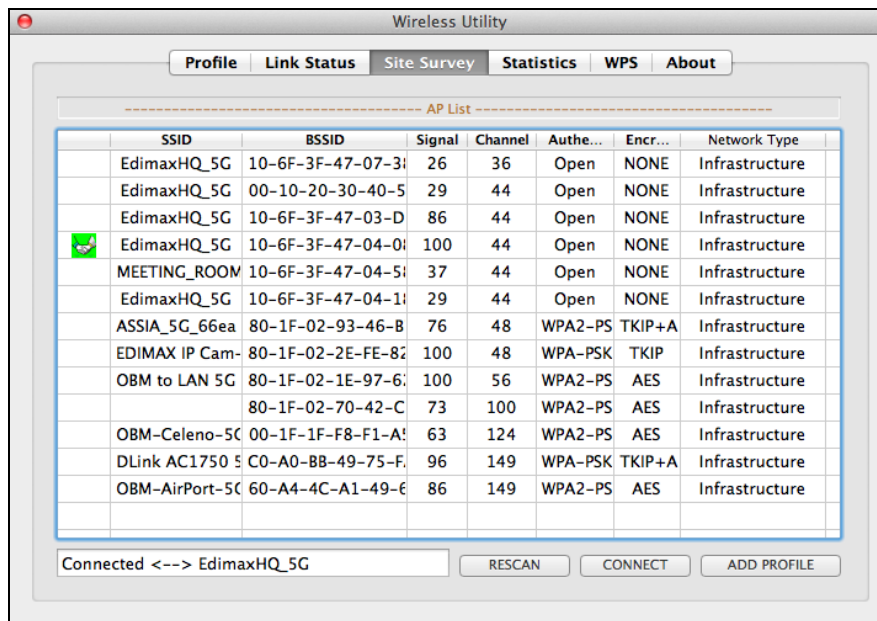
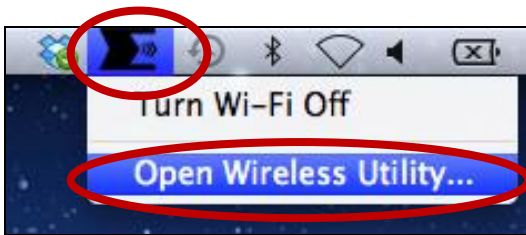


### IV-3. Using The Adapter

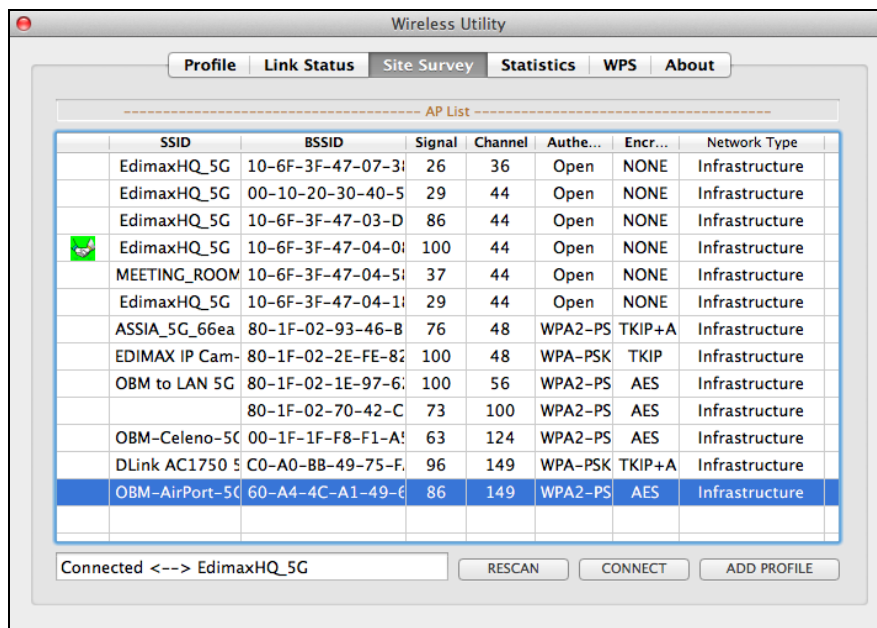
Mac users need to connect to a Wi-Fi network using the included utility software.

#### IV-3-1. Connect to a Wi-Fi network

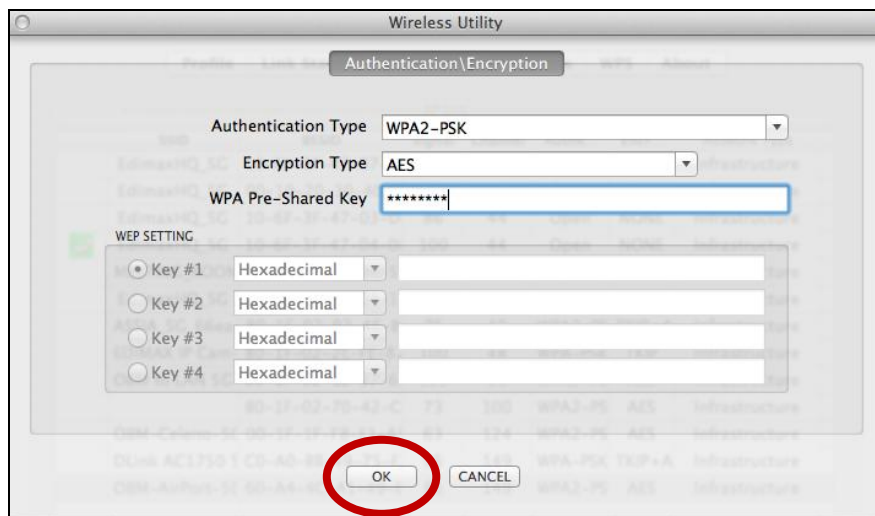
1. If the wireless utility software window shown below is not already open, please click the “E” icon in the top right of the screen and select “Open Wireless Utility”.



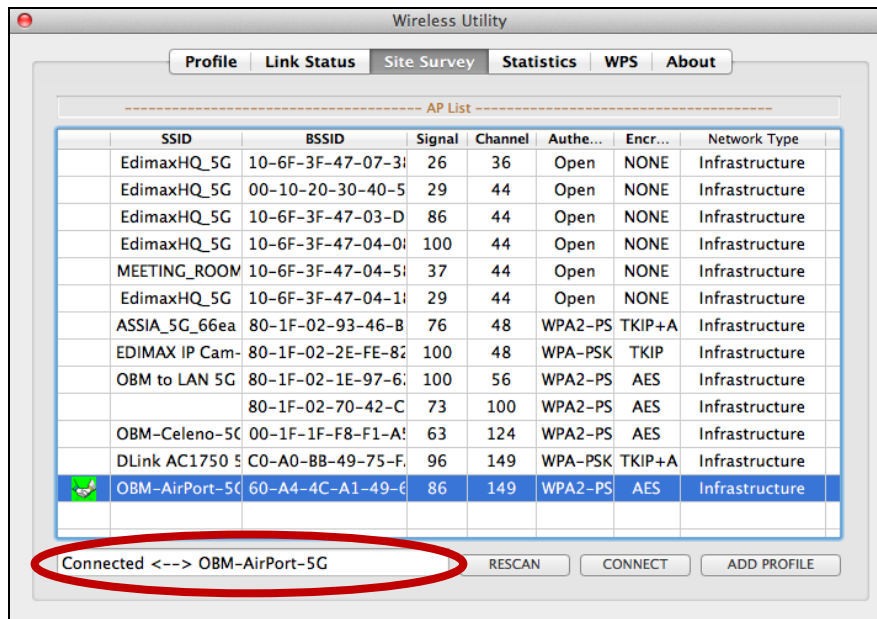
2. Select “Site Survey” from the menu across the top of the window, and then select a 5GHz Wi-Fi network from the list and click “Connect”.



3. If you set a password for your network, you will then be prompted to enter it. Enter your password and click “OK”.



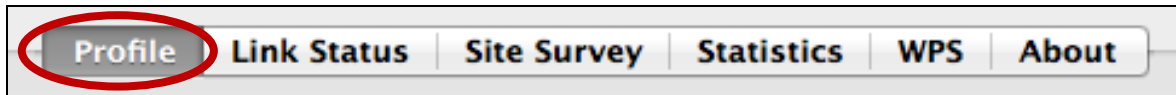
4. After correctly entering your password, you will be successfully connected to your Wi-Fi network.



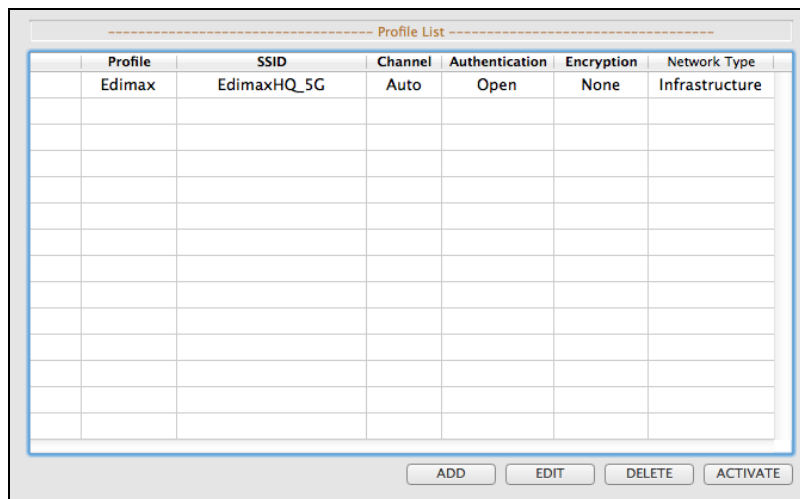
## IV-3-2. Wireless Utility

The wireless utility offers features to monitor and configure your connection. Navigate the wireless utility using the menu across the top of the window.

### IV-3-2-1. Profile



The “Profile” screen allows you to save different Wi-Fi connection settings as “Profiles”. Existing profiles are listed in the “Profile List”.



Profile	SSID	Channel	Authentication	Encryption	Network Type
Edimax	EdimaxHQ_5G	Auto	Open	None	Infrastructure

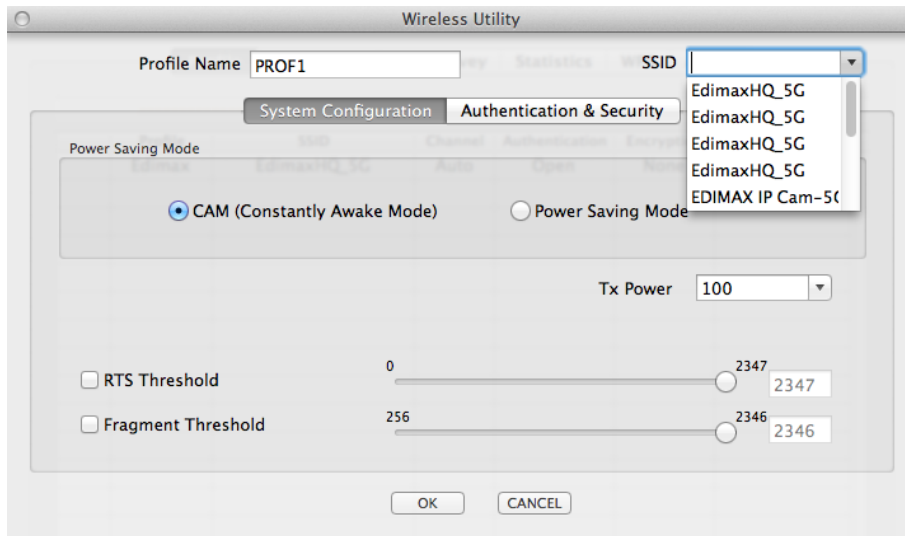
ADD   EDIT   DELETE   ACTIVATE

<b>ADD</b>	Opens a new window to add a new profile.
<b>EDIT</b>	Edit an existing profile.
<b>DELETE</b>	Delete an existing profile.
<b>ACTIVATE</b>	Activate (connect to) an existing profile.

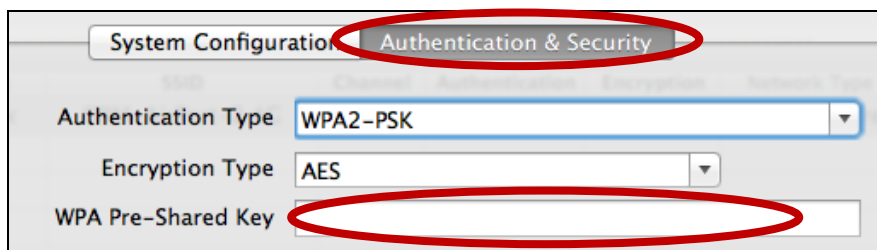
### ADD

When you select “ADD”, a new window will open. Select an SSID from the drop-down menu in the top right corner, or enter a “Profile Name”, then go the “Authentication & Security” tab and enter the Wi-Fi network’s security key/password under “WPA Pre-Shared Key”.

 **You can also add a new profile from the “Site Survey” screen.**

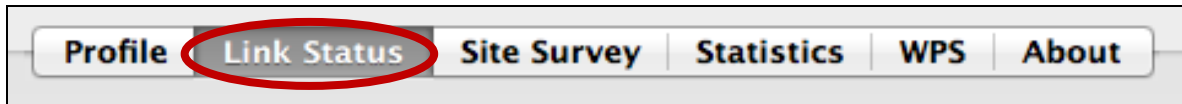


<b>Power Saving Mode</b>	Select “CAM (Constantly Awake Mode)” or “Power Saving Mode” depending on your preference. In “Power Saving Mode” the device will automatically reduce its power consumption when not being used.
<b>Tx Power</b>	Specify a Tx power level. This adjusts the transmit power of the wireless adapter. A lower level reduces performance but decreases interference in the local network environment.
<b>RTS Threshold</b>	Adjust the RTS threshold value.
<b>Fragment Threshold</b>	Adjust the fragment threshold value.

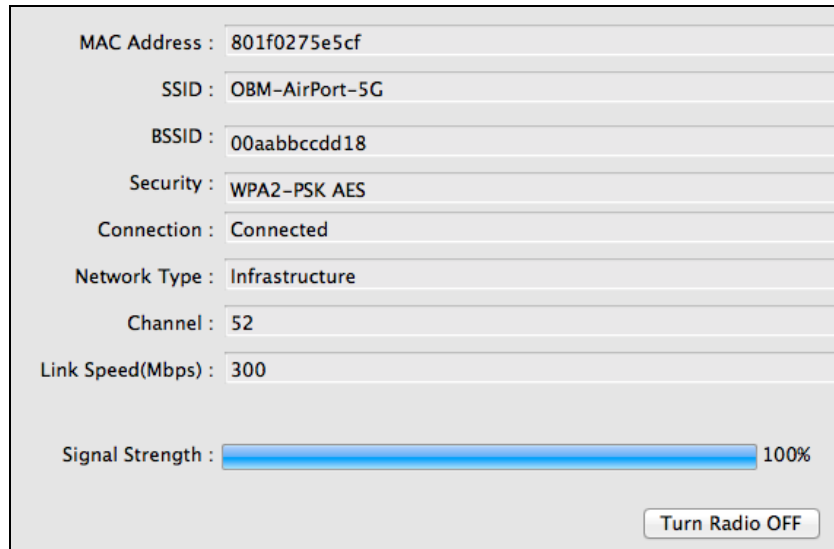


***It is recommended to keep the default values for the other settings on this page. Advanced users can make adjustments if necessary.***

## IV-3-2-2. Link Status



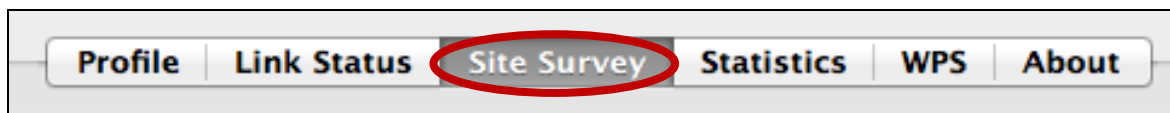
The “Link Status” page displays information about the current wireless connection.



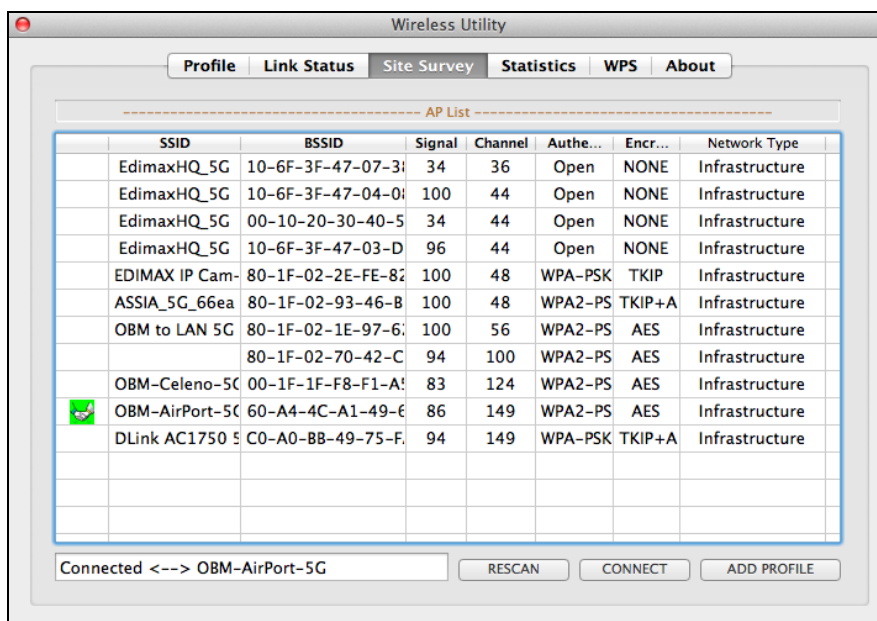
**Turn Radio OFF**

Switch off the adapter’s wireless radio.

### IV-3-2-3. Site Survey



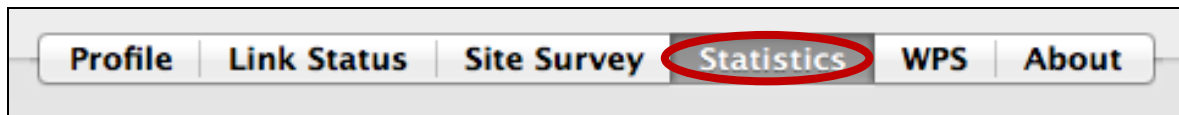
The “Site Survey” screen displays a list of all available Wi-Fi networks within range along with various categories of information about each network.



<b>RESCAN</b>	Refresh the list of available wireless networks
<b>CONNECT</b>	Connect to a selected wireless network.
<b>ADD PROFILE</b>	Use a selected wireless network to create a new profile (see <b>IV-3-2-1. Profile</b> ).



## IV-3-2-4. Statistics



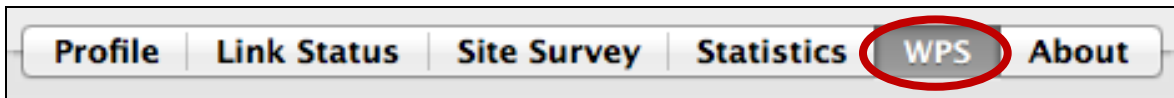
The “Statistics” page displays transmit and receive statistics about the wireless connection.

-- Transmit Statistics --		
Frames Transmitted Successfully	=	1782
Frames Transmitted Successfully Without Retry	=	226
Frames Transmitted Successfully After Retry(s)	=	1556
Frames Fail To Receive ACK After All Retries	=	9
RTS Frames Successfully Receive CTS	=	0
RTS Frames Fail To Receive CTS	=	0
-- Receive Statistics --		
Frames Received Successfully	=	13923
Frames Received With CRC Error	=	100
Frames Dropped Due To Out-of-Resource	=	0
Duplicate Frames Received	=	0
<a href="#">RESET COUNTERS</a>		

**RESET COUNTER**

Resets all counters to zero.

### IV-3-2-5. WPS




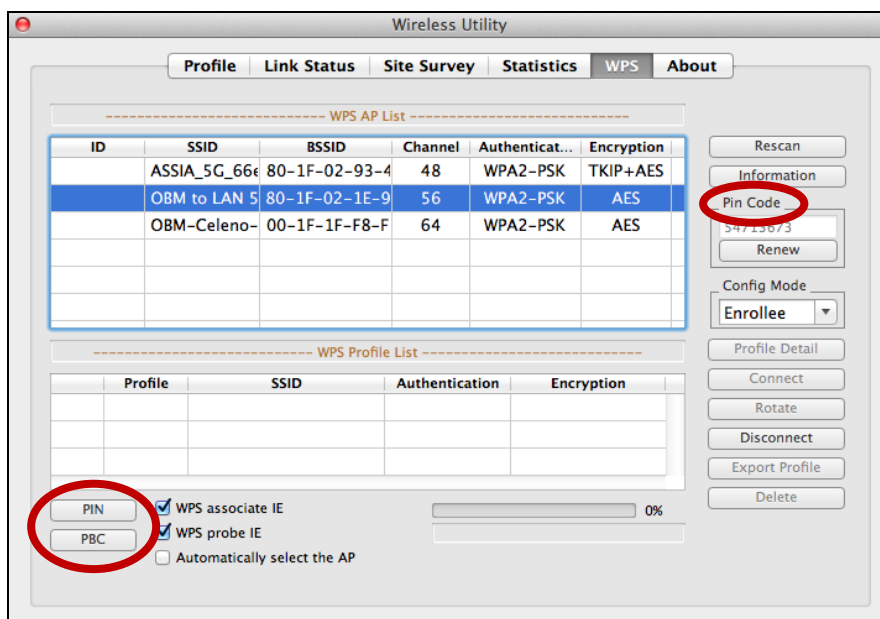
Wi-Fi Protected Setup is a simple, alternative way to establish connections between WPS compatible devices. Some wireless network devices feature a built-in WPS button, which activates WPS on that device. When WPS is activated in the correct manner and at the correct time for two compatible devices, they will automatically connect to each other.

WPS can also be activated via a device’s web user interface, which has the same effect as physically pushing the WPS button (known as PBC or “push button configuration”).

PIN code WPS is an additional variation of WPS which can be activated from a device’s web user interface, and includes the use of a PIN code between the two devices for identification and verification.

The “WPS” page displays information about Wireless Protected Setup (WPS), including a list of available WPS access points and user-defined WPS “Profiles”. Instructions to set up PBC WPS and PIN code WPS are included below, followed by a description of each item on this page:

 **You can save WPS settings as a profile using the “Export Profile” button and switch between profiles using the “WPS Profile List”.**



## PBC: Push Button Configuration

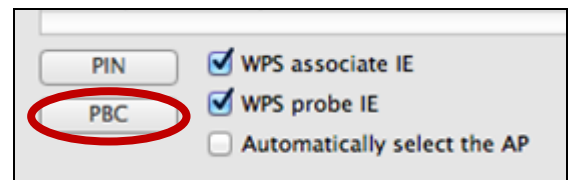
The EW-7711ULC does not feature a physical WPS button, but PBC WPS can be executed from this page by following the steps below:

1. Press the WPS button on your **wireless router/access point** for the correct length of time to activate its WPS.



*Please check the instructions for your wireless device for how long you need to hold down its WPS button to activate WPS.*


2. **Within two minutes**, click the “PBC” button in the bottom left of the “WPS” page. The wireless adapter will establish a connection with your wireless router/access point.

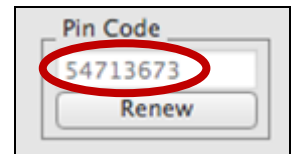


## PIN Code WPS

PIN code WPS includes the additional use of a PIN code between devices. This is useful for identification and verification purposes in crowded wireless environments with multiple routers/access points/wireless devices.

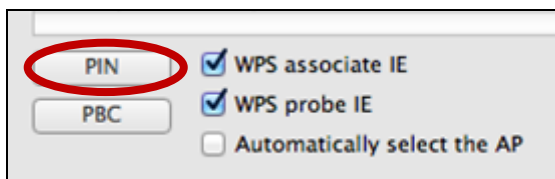
1. The wireless adapter's PIN code is listed on the right side of the "WPS" page under "Pin Code". Go to your wireless router/access point's web user interface and input the wireless adapter's PIN code in the correct location, and activate PIN code WPS for your wireless router/adapter.

 **Please check the instructions for your wireless router/access point for how to access the web user interface and where to input the PIN code.**



2. **Within two minutes**, select your wireless/router/access point from the "WPS AP" list as shown below, and then click the "PIN" button in the bottom left of the "WPS" page. The wireless adapter will establish a connection with your wireless router/access point.

----- WPS AP List -----					
ID	SSID	BSSID	Channel	Authenticat...	Encryption
	ASSIA_5G_66e	80-1F-02-93-4	48	WPA2-PSK	TKIP+AES
	OBM to LAN 5	80-1F-02-1E-9	56	WPA2-PSK	AES
	OBM-Celeno-	00-1F-1F-F8-F	64	WPA2-PSK	AES



Below is a description of all the items on the “WPS” page:

<b>Rescan</b>	Refresh the list of available wireless networks.
<b>Information</b>	Display more information about the selected wireless network.

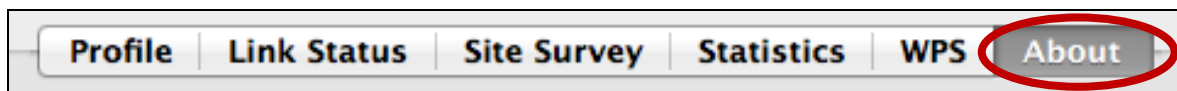
<b>Pin Code</b>	
<b>Renew</b>	Generate a new PIN code for WPS PIN code setup.

<b>Config Mode</b>	
<b>Enrollee</b>	“Enrollee” means the device acts a wireless client and will follow the settings of the wireless router/access point. <b>This is the default setting.</b>
<b>Registrar</b>	“Registrar” means the other WPS device will follow the settings of the wireless adapter. <b>Enrollee mode (above) is recommended.</b>

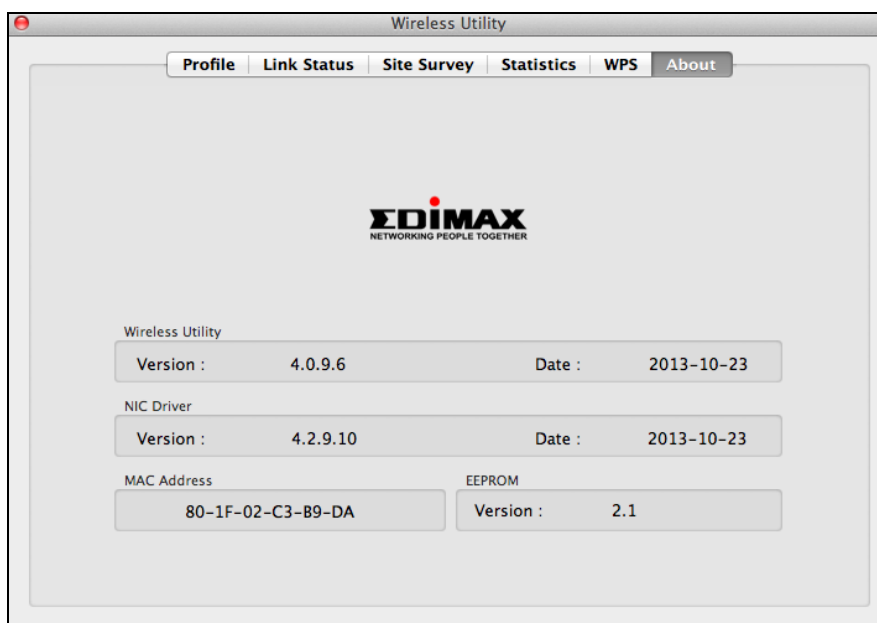
<b>Profile Detail</b>	Show details of selected WPS profile.
<b>Connect</b>	Connect to selected WPS profile.
<b>Rotate</b>	Rotate WPS profile.
<b>Disconnect</b>	Disconnect from selected WPS profile.
<b>Export Profile</b>	Save current WPS settings as a profile.
<b>Delete</b>	Delete selected WPS profile.

<b>PIN</b>	Begin PIN code WPS with selected access point.
<b>PBC</b>	Begin Push Button Configuration WPS.

## IV-3-2-6. About



The “About” screen displays various information such as wireless utility version and driver version.



## **COPYRIGHT**

Copyright © Edimax Technology Co., Ltd. all rights reserved. No part of this publication may be reproduced, transmitted, transcribed, stored in a retrieval system, or translated into any language or computer language, in any form or by any means, electronic, mechanical, magnetic, optical, chemical, manual or otherwise, without the prior written permission from Edimax Technology Co., Ltd.

Edimax Technology Co., Ltd. makes no representations or warranties, either expressed or implied, with respect to the contents hereof and specifically disclaims any warranties, merchantability, or fitness for any particular purpose. Any software described in this manual is sold or licensed as is. Should the programs prove defective following their purchase, the buyer (and not this company, its distributor, or its dealer) assumes the entire cost of all necessary servicing, repair, and any incidental or consequential damages resulting from any defect in the software. Edimax Technology Co., Ltd. reserves the right to revise this publication and to make changes from time to time in the contents hereof without the obligation to notify any person of such revision or changes.

The product you have purchased and the setup screen may appear slightly different from those shown in this QIG. The software and specifications are subject to change without notice. Please visit our website [www.edimax.com](http://www.edimax.com) for updates. All brand and product names mentioned in this manual are trademarks and/or registered trademarks of their respective holders.

# Federal Communication Commission Interference Statement

This equipment has been tested and found to comply with the limits for a Class B digital device, pursuant to Part 15 of FCC Rules. These limits are designed to provide reasonable protection against harmful interference in a residential installation. This equipment generates, uses, and can radiate radio frequency energy and, if not installed and used in accordance with the instructions, may cause harmful interference to radio communications. However, there is no guarantee that interference will not occur in a particular installation. If this equipment does cause harmful interference to radio or television reception, which can be determined by turning the equipment off and on, the user is encouraged to try to correct the interference by one or more of the following measures:

1. Reorient or relocate the receiving antenna.
2. Increase the separation between the equipment and receiver.
3. Connect the equipment into an outlet on a circuit different from that to which the receiver is connected.
4. Consult the dealer or an experienced radio technician for help.

## FCC Caution

This device and its antenna must not be co-located or operating in conjunction with any other antenna or transmitter. This device complies with Part 15 of the FCC Rules. Operation is subject to the following two conditions: (1) this device may not cause harmful interference, and (2) this device must accept any interference received, including interference that may cause undesired operation. Any changes or modifications not expressly approved by the party responsible for compliance could void the authority to operate equipment.

## Federal Communications Commission (FCC) Radiation Exposure Statement

This equipment complies with FCC radiation exposure set forth for an uncontrolled environment. In order to avoid the possibility of exceeding the FCC radio frequency exposure limits, human proximity to the antenna shall not be less than 2.5cm (1 inch) during normal operation.

## Federal Communications Commission (FCC) RF Exposure Requirements

This EUT is compliance with SAR for general population/uncontrolled exposure limits in ANSI/IEEE C95.1-1999 and had been tested in accordance with the measurement methods and procedures specified in OET Bulletin 65 Supplement C. The equipment version marketed in US is restricted to usage of the channels 1-11 only. This equipment is restricted to *indoor* use when operated in the 5.15 to 5.25 GHz frequency range.

# R&TTE Compliance Statement

This equipment complies with all the requirements of DIRECTIVE 1999/5/EC OF THE EUROPEAN PARLIAMENT AND THE COUNCIL of March 9, 1999 on radio equipment and telecommunication terminal equipment and the mutual recognition of their conformity (R&TTE). The R&TTE Directive repeals and replaces in the directive 98/13/EEC (Telecommunications Terminal Equipment and Satellite Earth Station Equipment) As of April 8, 2000.

## Safety

This equipment is designed with the utmost care for the safety of those who install and use it. However, special attention must be paid to the dangers of electric shock and static electricity when working with electrical equipment. All guidelines of this and of the computer manufacture must therefore be allowed at all times to ensure the safe use of the equipment.

## EU Countries Intended for Use

The ETSI version of this device is intended for home and office use in Austria, Belgium, Bulgaria, Cyprus, Czech, Denmark, Estonia, Finland, France, Germany, Greece, Hungary, Ireland, Italy, Latvia, Lithuania, Luxembourg, Malta, Netherlands, Poland, Portugal, Romania, Slovakia, Slovenia, Spain, Sweden, Turkey, and United Kingdom. The ETSI version of this device is also authorized for use in EFTA member states: Iceland, Liechtenstein, Norway, and Switzerland.

## EU Countries Not Intended for Use

None.



## EU Declaration of Conformity

- English:** This equipment is in compliance with the essential requirements and other relevant provisions of Directive 1999/5/EC, 2009/125/EC.
- Français:** Cet équipement est conforme aux exigences essentielles et autres dispositions de la directive 1999/5/CE, 2009/125/CE.
- Čeština:** Toto zařízení je v souladu se základními požadavky a ostatními příslušnými ustanoveními směrnic 1999/5/ES, 2009/125/ES.
- Polski:** Urządzenie jest zgodne z ogólnymi wymaganiami oraz szczególnymi warunkami określonymi Dyrektywą UE 1999/5/EC, 2009/125/EC.
- Română:** Acest echipament este în conformitate cu cerințele esențiale și alte prevederi relevante ale Directivei 1999/5/CE, 2009/125/CE.
- Русский:** Это оборудование соответствует основным требованиям и положениям Директивы 1999/5/EC, 2009/125/EC.
- Magyar:** Ez a berendezés megfelel az alapvető követelményeknek és más vonatkozó irányelveknek (1999/5/EK, 2009/125/EC).
- Türkçe:** Bu cihaz 1999/5/EC, 2009/125/EC direktifleri zorunlu istekler ve diğer hükümlerle ile uyumludur.
- Українська:** Обладнання відповідає вимогам і умовам директиви 1999/5/EC, 2009/125/EC.
- Slovenčina:** Toto zariadenie spĺňa základné požiadavky a ďalšie príslušné ustanovenia smerníc 1999/5/ES, 2009/125/ES.
- Deutsch:** Dieses Gerät erfüllt die Voraussetzungen gemäß den Richtlinien 1999/5/EC, 2009/125/EC.
- Español:** El presente equipo cumple los requisitos esenciales de la Directiva 1999/5/EC, 2009/125/EC.
- Italiano:** Questo apparecchio è conforme ai requisiti essenziali e alle altre disposizioni applicabili della Direttiva 1999/5/CE, 2009/125/CE.
- Nederlands:** Dit apparaat voldoet aan de essentiële eisen en andere van toepassing zijnde bepalingen van richtlijn 1999/5/EC, 2009/125/EC.
- Português:** Este equipamento cumpre os requisitos essenciais da Directiva 1999/5/EC, 2009/125/EC.
- Norsk:** Dette utstyret er i samsvar med de viktigste kravene og andre relevante regler i Direktiv 1999/5/EC, 2009/125/EC.
- Svenska:** Denna utrustning är i överensstämmelse med de väsentliga kraven och övriga relevanta bestämmelser i direktiv 1999/5/EG, 2009/125/EG.
- Dansk:** Dette udstyr er i overensstemmelse med de væsentligste krav og andre relevante forordninger i direktiv 1999/5/EC, 2009/125/EC.
- Suomi:** Tämä laite täyttää direktiivien 1999/5/EY, 2009/125/EY oleelliset vaatimukset ja muut asiaankuuluvat määräykset.

FOR USE IN

AT	BE	CY	CZ	DK	EE	FI	FR	RU				
DE	GR	HU	IE	IT	LV	LT	LU	MT	NL	PL	PT	UA
SK	SI	ES	SE	GB	IS	LI	NO	CH	BG	RO	TR	



---

## WEEE Directive & Product Disposal



At the end of its serviceable life, this product should not be treated as household or general waste. It should be handed over to the applicable collection point for the recycling of electrical and electronic equipment, or returned to the supplier for disposal.

## Declaration of Conformity

We, Edimax Technology Co., Ltd., declare under our sole responsibility, that the equipment described below complies with the requirements of the European R&TTE directives.

**Equipment: AC450 Wi-Fi USB Adapter – 11ac Upgrade for Laptop**

**Model No.: EW-7711ULC**

The following European standards for essential requirements have been followed:

### Directives 1999/5/EC

Spectrum : ETSI EN 301 893 V1.7.1 (2012-06)  
EMC : EN 301 489-1 V1.9.2 (2011-09);  
EN 301 489-17 V2.2.1 (2012-09)  
Safety (LVD) : IEC 60950-1:2005 (2<sup>nd</sup> Edition); Am 1:2009;  
EN 60950-1:2006+A11:2009+A1:2010+A12:2011

### Recommendation 99/519/EC

EMF : EN 62311:2008

### Directives 2006/95/EC

Safety (LVD) : IEC 60950-1:2005 (2<sup>nd</sup> Edition); Am 1:2009;  
EN 60950-1:2006+A11:2009+A1:2010+A12:2011

Edimax Technology Co., Ltd.  
No. 3, Wu Chuan 3<sup>rd</sup> Road,  
Wu-Ku Industrial Park,  
New Taipei City, Taiwan



Date of Signature: June, 2014

Signature: \_\_\_\_\_

Printed Name: \_\_\_\_\_

Albert Chang

Title: \_\_\_\_\_

Director

Edimax Technology Co., Ltd.

The logo features the Greek letter sigma (Σ) followed by 'DIMAX' in a bold, sans-serif font. A small red dot is positioned above the 'I'. Below the main text, the tagline 'NETWORKING PEOPLE TOGETHER' is written in a smaller, all-caps font. The background is a dark grey/black band filled with various white line-art icons such as a handshake, musical notes, a smiley face, a game controller, and a computer monitor. A solid dark grey horizontal bar is located at the bottom of the logo area.

**ΣDIMAX**  
NETWORKING PEOPLE TOGETHER